

IP65 Waterproof 500W 800W 1400W Mobile Balloon Lights Solar Portable Light Tower Generator Led Work Light

Our Product Introduction

Basic Information

- Place of Origin: Guangdong, China
- Brand Name: USHineray
- Model Number: YXR-BL-500W-A
- Minimum Order Quantity: 1pcs
- Payment Terms: T/T, Paypal, Western Union



Product Specification

- IP Rating: IP65
- Color Temperature(CCT): 3000K-6000K
- Beam Angle(°): 360° Omni Coverage
- CRI (Ra>): 70
- Input Voltage(V): AC 100-277V
- Lamp Luminous Efficiency(lm/w): 160
- Lamp Luminous Flux(lm): 80000
- Warranty(Year): 5-Year
- Working Lifetime(Hour): 50000
- Working Temperature(°C): -20°C~+60°C
- Color Rendering Index(Ra): 70
- Emitting Color: White
- Power Supply: AC
- Light Source: LED



More Images



Product Description

Video Description

Product Parameters

YXR-BL-A	500W-A	800W-A	1000W-A	1400W-A
Power	500W	800W	1000W	1400W
Lumen	80000lm	128000lm	160000lm	224000lm
Efficacy	160lm/W			
CCT	3000K~6000K (Adjustable)			
CRI	≥70Ra			
LED	Lumileds 2835			
PF	>0.97			
Input Voltage	AC100-277V			
Frequency	50~60Hz			
Weight(kg)	17.5	18.8	20	22
Sizes(cm)	D70*H60	D90*H60	D110*H85	
Inflated Dimension	700*600mm	900*600mm	1100*850mm	
Beam Angle	360° Omni Coverage			
Work Temp	-35~55℃			
Humidity	15%~90% RH, no condensing			
Finish	Sprayed with outdoor special powder			
Life span	≥50,000 Hrs (LM70 @ 35℃)			
IP Grade	IP65			
IK Grade	IK 08			

Details Images



- ◆ Color temperature adjustable, Dimmable(≤320W).
- ◆ Foldable tripod and cover; Lightweight; Portable; Easy quick setup.
- ◆ Glare-free; Diffused light; 360° illumination; Dimmable; On-off button switch.
- ◆ High Efficiency ≥160lm/W; Low power consumption.
- ◆ Weather resistance; Life span > 50,000hrs; Low maintenance.
- ◆ Balloon material: Waterproof, translucent, anti-UV, flame-retardant.
- ◆ Filtration device: Dust absorption.

USHINERAY



LED Balloon Light
500W~1400W



LED Balloon Light
60W~320W

BL-60W-120W-A LED Balloon Light

NEW

Specifications

Lamp	Model		60W		120W	
			60W		120W	
Lamp	Power	60W / 120W / 120W				
	Voltage	AC100-277V				
	Frequency	50/60Hz				
	PF	>0.95				
	LED Driver	Qualcomm 2835				
	LED Chips	USNemip				
	Lumen	3000lm / 6000lm / 12000lm				
	CRI	70Ra				
	CCT	3000K-6500K(Adjustable)				
	Infused Dimensions	400x300mm				
Stand	Lamp Height	4.5kg 5.5kg 6.5kg				
	Height (mm)	1275-1900mm				
	Collapsed Height	1.5m				
	Net Weight	6.3kg				



LED BALLOON LIGHT

Patent Design 60W-120W

Product Features



Package Included



Product Size



60W/100W/120W

BL-150W-320W-A LED Balloon Light

NEW

Specifications

Lamp	Model		150W		200W		320W	
			150W		200W		320W	
Lamp	Power	150W / 200W / 320W						
	Voltage	AC100-277V						
	Frequency	50/60Hz						
	PF	>0.95						
	LED Driver	USNemip						
	LED Chips	Qualcomm 2835						
	Lumen	24000lm / 32000lm / 51200lm						
	CRI	70Ra						
	CCT	3000K-6500K(Adjustable)						
	Infused Dimensions	800mmx400mm						
Stand	Lamp Height	8.5kg 9.5kg 10.5kg						
	Height (mm)	1275-1900mm						
	Collapsed Height	1.5m						
	Net Weight	6.3kg						



LED BALLOON LIGHT

Patent Design 150W-320W

Product Features



Package Included



Product Size



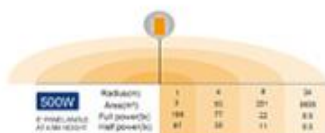
150W/200W/320W

BL-500W-A LED Balloon Light

NEW

Specifications

	Item	TM-500W-A			
		Power	500W		
Lamp	Voltage	AC90-300V			
	Frequency	50/60Hz			
	PF	>0.95			
	LED Driver	Switchmode			
	LED Chips	Lumileds 2835			
	Lumen	8000lm			
	CRI	90Ra			
	CCT	5000K			
Tripod	Infused Dimension	750mm/1000mm			
	Lamp Weight	17.5kg			
	Height (max)	1620-3000mm			
	Collapsed height	1.5m			
	Net Weight	11.5kg			



LED BALLOON LIGHT

Patent Design

500W

Product Features



Air Station Function

Package Included



Orange Diffuser



Tripod Adapter



Tray Case for Light Fixture

Optional



All White Diffuser



Blue Diffuser



Black Diffuser



Tripod



Remote

Product Size



500W

BL-600W-800W-A LED Balloon Light

NEW

Specifications

	Item	TM-600W-800W-A			
		Power	600W / 700W / 800W		
Lamp	Voltage	AC90-300V			
	Frequency	50/60Hz			
	PF	>0.95			
	LED Driver	Switchmode			
	LED Chips	Lumileds 2835			
	Lumen	9600lm / 11200lm / 12800lm			
	CRI	90Ra			
	CCT	5000K			
Tripod	Infused Dimension	800/920mm			
	Lamp Weight	18.5kg / 18.5kg / 18.5kg			
	Height (max)	1620-3000mm			
	Collapsed height	1.5m			
	Net Weight	11.5kg			



LED BALLOON LIGHT

Patent Design

600W-800W

Product Features



Air Station Function

Package Included



Orange Diffuser



Tripod Adapter



Tray Case for Light Fixture

Optional



All White Diffuser



Blue Diffuser



Black Diffuser



Tripod



Remote

Product Size



600W/700W/800W

BL-1000W-1400W-A

LED Balloon Light

NEW

Specifications

Lamp	Model	1000W		1200W		1400W	
		Power	1000W	1200W	1400W	Power	1000W
Lamp	Voltage	AC100-240V					
	Frequency	50/60Hz					
	PF	≥0.95					
	LED Driver	Instantaneous					
	LED Chips	18000lm / 18000lm / 22400lm					
	Lumen	18000lm					
	CRI	≥90					
	Beam Angle	120°					
	Beam Diameter	1100mm					
	Lamp Weight	3kg / 3kg / 3kg					
Tripod	Height (mm)	1600-3600mm					
	Collapsed Height	1.8m					
	Net Weight	11.5kg					



1000W	Radius (m)	Area (m²)	1000W		1200W		1400W	
			Radius (m)	Area (m²)	Radius (m)	Area (m²)	Radius (m)	Area (m²)
1000W	1	3.14	1	3.14	1	3.14	1	3.14
	2	12.56	2	12.56	2	12.56	2	12.56
	3	28.26	3	28.26	3	28.26	3	28.26
1200W	1	3.14	1	3.14	1	3.14	1	3.14
	2	12.56	2	12.56	2	12.56	2	12.56
	3	28.26	3	28.26	3	28.26	3	28.26
1400W	1	3.14	1	3.14	1	3.14	1	3.14
	2	12.56	2	12.56	2	12.56	2	12.56
	3	28.26	3	28.26	3	28.26	3	28.26

LED BALLOON LIGHT

Patent Design

1000W-1400W

Product Features



Package Included



Optional



Product Size



1000W/1200W/1400W

COMPANY HONORS



Shenzhen Yongxinru Lighting Technology Co., Ltd.
Certified by ISO9001, ISO14001, CCC, CE, ROHS, FCC, etc.

LED Balloon Light | LED Street Light | LED Flood Light | LED High Bay Light | LED Wall Light

Email: sales@ushineray.com Web: www.ushineray.com Tel: 86 755 23306606

Add: 3F, 88 Bldg, Xiangsheng Industrial Park, No. 35, Hanyu Rd, Futian St, Bao'an Dist, Shenzhen, China

Balloon lighting manufacturer

2011
Since



LED Balloon Light
Professional Manufacturer

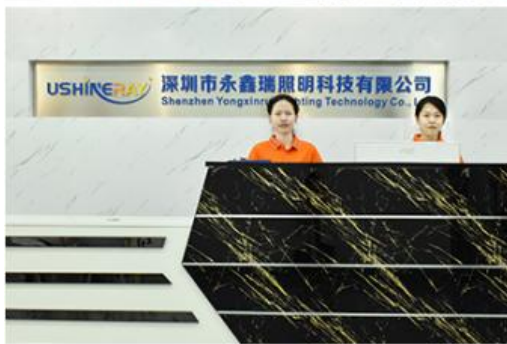


Applications



Company Profile

OUR FACTORY





Guangzhou International Lighting Exhibition



PRODUCTION SITE





FAQ

Q1. Are you a manufacturer?

Yes, we have our own factory with over 10 years of R&D and manufacturing experience based on ISO quality management since 2011.

Q2. Do you have any MOQ limit for led light orders?

No MOQ, 1pc for sample checking is available.

Q3. Can I get a lower price for large quantity order?

Yes, please check with our sales staff for the details.

Q4. How about the lead time of the LED Stadium Lights?

Our standard lead time for samples is 3-5 days, and the normal bulk order lead time is 7-10 days, for the large bulk order lead time, please check with our sales team.

Q5. Can you provide OEM and ODM services?

OEM and ODM services can be provided, we can provide the services of customized design box and carton as well as laser print logo on the lamp fixture, besides, our engineer can design the lighting products according to your idea.

Q6. What are the payment terms of your formal order?

We accept payment via TT, Trade Insurance payment, Paypal, and Western Union, and we offer Ex-works, FOB,

CIF price terms.

Q7. How to deal with the defective?

All of our products are produced in a strict quality control system, the defective rate is less than 0.2% according to our shipment records.

We offer 3- 5 years warranty for this product, if there is any defective during the warranty, please provide a picture or video of the working situation of the defective lights, we will ship the new lights to you within a few days or send them together with your next order.

USHINERAY Shenzhen Yongxinrui Lighting Technology Co., Ltd.



+8613410523891



joy@ushineray.com



ushineraylight.com

4F, Building C, Junxing Optoelectronic Industrial Park, Fuyuan 2nd Road, FuHai Street, Bao'an District,
Shenzhen