

## White Emitting Color LED Balloon Light for Event Lighting Portable Waterproof Tower

Our Product Introduction

for more products please visit us on [ushineraylight.com](http://ushineraylight.com)

### Basic Information

- Place of Origin: Guangdong, China
- Brand Name: UShineray
- Model Number: YXR-BL-60W-A
- Minimum Order Quantity: 2 pieces
- Price: \$163.60/pieces 2-499 pieces

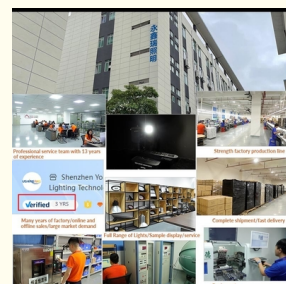


### Product Specification

- Color Temperature(CCT): 5000K
- Beam Angle(°): 360°
- CRI (Ra>): 70
- Input Voltage(V): AC90-305V
- Lamp Luminous Efficiency(lm/w): 165
- Lamp Luminous Flux(lm): 80000
- Warranty(Year): 5-Year
- Working Lifetime(Hour): 50000
- Color Rendering Index(Ra): 70
- Emitting Color: White
- Power Supply: AC
- Light Source: LED
- Support Dimmer: NO
- Color: White, Blue, Customized Color



### More Images



## Product Description

### Product Description



- ◆ Color temperature adjustable, Dimmable(≤320W).
- ◆ Foldable tripod and cover; Lightweight; Portable; Easy quick setup.
- ◆ Glare-free; Diffused light; 360° illumination; Dimmable; On-off button switch.
- ◆ High Efficiency ≥160lm/W; Low power consumption.
- ◆ Weather resistance; Life span > 50,000hrs; Low maintenance.
- ◆ Balloon material: Waterproof, translucent, anti-UV, flame-retardant.
- ◆ Filtration device: Dust absorption.

USHINERAY



LED Balloon Light  
500W-1400W



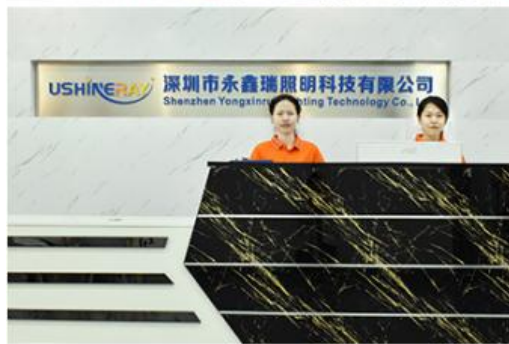
LED Balloon Light  
60W-320W

### Specification

Model E	500W-A	600W-A	700W-A	800W-A	1000W-A	1200W-A	1400W-A
YXR-BL-							
Power	500W	600W	700W	800W	1000W	1200W	1400W
Lumen(LM)	80000	96000	112000	128000	165000	192000	213000
Weight(kg)	17.5	18.1	18.5	18.8	20	21	22
Inflated Dimension	D70*H60		D90*H60		D110*H85		
Efficacy				165LM/W			
CCT				5000K			
CRI				≥70Ra			
LED Chips				Lumileds 2835			
LED Driver				Ivtronics			
PF				≥0.95			
Input Voltage				AC90-305V			
Life Span				50000 hrs			
IP				IP65			
				Tripod			
	Height(min-max)		Collapsed Height		Net Weight		
	1620-3800mm		1.8m		11.5kg		

### Company Profile

## OUR FACTORY



## BL-60W~120W-A LED Balloon Light

NEW

### Specifications

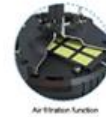
Lamp	Model		1600mm	
	Power	60W / 100W / 120W	Beam Angle	Beam Diameter
	Voltage	AC100-220V		
	Frequency	50/60Hz		
	PF	>0.95		
	LED Driver	Ultramini		
	LED Chips	Luminex 3030		
	Lumen	3000lm / 5000lm / 6000lm		
	CRI	70Ra		
	OCF	3000K-6500K(Adjustable)		
	Adjusted Dimension	400mm		
	Lamp Weight	4.5kg / 5.5kg / 6.5kg		
Stand	Height (mm)	1275 / 1900mm		
	Net Weight	6.5kg		

60W		100W		120W	
Beam Angle	15°	Beam Angle	15°	Beam Angle	15°
Beam Diameter	1.5m	Beam Diameter	1.5m	Beam Diameter	1.5m
Adjusted Dimension	400mm	Adjusted Dimension	400mm	Adjusted Dimension	400mm
Lamp Weight	4.5kg	Lamp Weight	5.5kg	Lamp Weight	6.5kg
Height (mm)	1275	Height (mm)	1900	Height (mm)	1900
Net Weight	6.5kg	Net Weight	6.5kg	Net Weight	6.5kg

## LED BALLOON LIGHT

Patent Design 60W-120W

### Product Features



Air Rotation Function

### Package Included



### Product Size



## BL-150W~320W-A LED Balloon Light

NEW

### Specifications

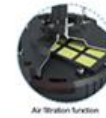
Lamp	Model		1600mm	
	Power	150W / 200W / 320W	Beam Angle	Beam Diameter
	Voltage	AC100-220V		
	Frequency	50/60Hz		
	PF	>0.95		
	LED Driver	Ultramini		
	LED Chips	Luminex 3030		
	Lumen	24000lm / 32000lm / 51200lm		
	CRI	70Ra		
	OCF	3000K-6500K(Adjustable)		
	Adjusted Dimension	400mm		
	Lamp Weight	8.5kg / 9.5kg / 12.5kg		
Stand	Height (mm)	1275 / 1900mm		
	Net Weight	6.5kg		

150W		200W		320W	
Beam Angle	15°	Beam Angle	15°	Beam Angle	15°
Beam Diameter	1.5m	Beam Diameter	1.5m	Beam Diameter	1.5m
Adjusted Dimension	400mm	Adjusted Dimension	400mm	Adjusted Dimension	400mm
Lamp Weight	8.5kg	Lamp Weight	9.5kg	Lamp Weight	12.5kg
Height (mm)	1275	Height (mm)	1900	Height (mm)	1900
Net Weight	6.5kg	Net Weight	6.5kg	Net Weight	6.5kg

## LED BALLOON LIGHT

Patent Design 150W-320W

### Product Features



Air Rotation Function

### Package Included



### Product Size





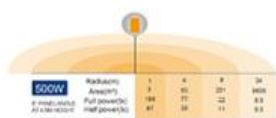
# BL-500W-A

## LED Balloon Light

NEW

### Specifications

	Model	500W-A			
		Power	500W		
Lamp	Voltage	AC220-240V			
	Frequency	50/60Hz			
	PF	>0.95			
	LED Driver	Imported			
	LED Chips	Lumileds 2835			
	Lumen	8000lm			
Tripod	CRI	75%			
	CCT	5000K			
	Infused Dimension	700mm*1000mm			
	Lamp Height	17.5kg			
	Height (mm)	1620-2000mm			
	Collapsed Height	1.5m			
	Net Weight	11.5kg			



## LED BALLOON LIGHT

Patent Design 500W

### Product Features



### Package Included



### Optional



### Product Size



# BL-600W-800W-A

## LED Balloon Light

NEW

### Specifications

	Model	600W-800W-A			
		Power	600W / 700W / 800W		
Lamp	Voltage	AC220-240V			
	Frequency	50/60Hz			
	PF	>0.95			
	LED Driver	Imported			
	LED Chips	Lumileds 2835			
	Lumen	36000lm / 110000lm / 120000lm			
Tripod	CRI	75%			
	CCT	5000K			
	Infused Dimension	800*1000mm			
	Lamp Height	15.7kg 18.5kg 18.5kg			
	Height (mm)	1620-2000mm			
	Collapsed Height	1.5m			
	Net Weight	11.5kg			



## LED BALLOON LIGHT

Patent Design 600W/700W/800W

### Product Features



### Package Included



### Optional



### Product Size





# BL-1000W~1400W-A

## LED Balloon Light

### Specifications

Lamp	Model	
	Power	1000W / 1200W / 1400W
Lamp	Voltage	AC100-240V
	Frequency	50/60Hz
	PF	>0.95
	LED Driver	Instantaneous
	LED Chips	18000lm / 18000lm / 22400lm
	Lumen	Lumens 2830
Tripod	CM	75cm
	DOT	8000K
	Infused Dimension	1100*900mm
	Lamp Height	20kg / 20kg / 20kg
	Height (mm)	1800-3000mm
	Outward Height	1.8m
	Net Weight	11.5KG

Power	Radius (m)	Area (m²)	Weight (kg)	Height (m)
1000W	1.5	7.07	11.5	1.8
1200W	2.0	12.57	15.0	2.0
1400W	2.5	19.63	18.5	2.2

### Product Features



### Package Included



### Optional



### Product Size



### COMPANY HONORS



Shenzhen Yongsheng Lighting Technology Co., Ltd.  
 Certified by ISO9001, ISO14001, CCC, CE, ROHS, FCC, etc.  
 LED Balloon Light | LED Screen Light | LED Floor Light | LED Stage Light | LED Street Light  
 Email: sales@ushineray.com | Web: www.ushineray.com | Tel: 86-755-22222222  
 Add: 3F, 8th Bldg, Xiangcheng Industrial Park, No. 28, Pingshi Rd, Futian St, Baoan Dist, Shenzhen, China

2011  
Since



LED Balloon Light  
Professional Manufacturer



## Guangzhou International Lighting Exhibition







## FAQ

### Q1. Are you a manufacturer ?

Yes, we have our own factory with over 10 years R&D and manufacture experience base on ISO quality management since 2011.

### Q2. Do you have any MOQ limit for led light order?

No MOQ, 1pc for sample checking is available.

### Q3. Can I get a lower price for large quantity order?

Yes, please check with our sales staff for the details.

### Q4. How about the lead time of ordering?

Our standard lead time for sample is 3-5 days, and normal order lead time is 7-10 days. For the large order lead time, please also check with our sales team.

### Q5. Can you provide OEM and ODM service?

we can provide OEM and ODM product, with customized label design on the product and carton box. Or customized carton box, and laser print logo on the lamp fixture.

### Q6. What is the payment terms of your formal order?

We accept payment via TT, Paypal, Western Union, and we offer EXW terms.

### Q7. How to deal with the defective?

All of our product are produced in strict quality control system, the defective rate is less than 0.2% according to our shipment records. We offer 3- 5 years warranty for this product, if there is any defective during the warranty, please provide the picture or video for the working situation of the defective lights, we will ship the new lights to you within a few days or send it together with your next order.

**USHINERAY** Shenzhen Yongxinrui Lighting Technology Co., Ltd.



+8613410523891



joy@ushineray.com



ushineraylight.com

4F, Building C, Junxing Optoelectronic Industrial Park, Fuyuan 2nd Road, FuHai Street, Bao'an District, Shenzhen