

## Original Design Solar Construction Mobile Lighting Towers with 19200lm Lamp Luminous Flux

Our Product Introduction

for more products please visit us on [ushineraylight.com](http://ushineraylight.com)

### Basic Information

- Place of Origin: Guangdong, China
- Brand Name: UShineray
- Model Number: YXR-BL-120W-A
- Minimum Order Quantity: 2 pieces
- Price: \$177.10/pieces



### Product Specification

- IP Rating: IP65
- Color Temperature(CCT): 3000K-6000K
- Beam Angle(°): 360° Omni Coverage
- CRI (Ra>): 70
- Input Voltage(V): AC 100-277V
- Lamp Luminous Efficiency(lm/w): 160
- Lamp Luminous Flux(lm): 19200
- Warranty(Year): 5-Year
- Working Lifetime(Hour): 50000
- Working Temperature(°C): -20°C-+60°C
- Color Rendering Index(Ra): 70
- Emitting Color: White
- Power Supply: AC
- Light Source: LED



### More Images



## Product Description

### Video Description

### Product Parameters

YXR-BL-A	60W-A	120W-A	200W-A	320W-A
Power	60W	120W	200W	320W
Lumen	96000lm	19200lm	32000lm	51200lm
Efficacy	160lm/W			
CCT	3000K~6000K (Adjustable)			
CRI	≥70Ra			
LED	Lumileds 2835			
PF	>0.97			
Input Voltage	AC100-277V			
Frequency	50~60Hz			
Weight(kg)	4.5	5.2	8.8	9.2
Sizes(cm)	D40*H30		D60*H40	
Inflated Dimension	400x300mm			
Beam Angle	360° Omni Coverage			
Work Temp	-35~55℃			
Humidity	15%~90% RH, no condensing			
Finish	Sprayed with outdoor special powder			
Life span	≥50,000 Hrs (LM70 @ 35℃ )			
IP Grade	IP65			
IK Grade	IK 08			

### Details Images



- ◆ Color temperature adjustable, Dimmable(≤320W).
- ◆ Foldable tripod and cover; Lightweight; Portable; Easy quick setup.
- ◆ Glare-free; Diffused light; 360° illumination; Dimmable; On-off button switch.
- ◆ High Efficiency ≥160lm/W; Low power consumption.
- ◆ Weather resistance; Life span > 50,000hrs; Low maintenance.
- ◆ Balloon material: Waterproof, translucent, anti-UV, flame-retardant.
- ◆ Filtration device: Dust absorption.

USHINERAY



LED Balloon Light  
500W~1400W



LED Balloon Light  
60W~320W

## BL-60W-120W-A LED Balloon Light

NEW

### Specifications

Lamp	Model		60W		120W	
			60W		120W	
Lamp	Power	60W / 120W / 120W				
	Voltage	AC90-277V				
	Frequency	50/60Hz				
	PF	>0.95				
	LED Driver	Lumileds 2835				
	LED Chips	USNemip				
	Lumen	3000lm / 6000lm / 12000lm				
	CRI	70Ra				
	CCT	3000K-6500K(Adjustable)				
	Infused Dimensions	400x300mm				
Stand	Lamp Height	4.5kg 5.5kg 6.5kg				
	Height (mm)	1275-1900mm				
	Collapsed Height	1.5m				
	Net Weight	6.3kg				



## LED BALLOON LIGHT

Patent Design 60W-120W

### Product Features



### Package Included



### Product Size



60W/100W/120W

## BL-150W-320W-A LED Balloon Light

NEW

### Specifications

Lamp	Model		150W		200W		320W	
			150W		200W		320W	
Lamp	Power	150W / 200W / 320W						
	Voltage	AC90-277V						
	Frequency	50/60Hz						
	PF	>0.95						
	LED Driver	USNemip						
	LED Chips	Lumileds 2835						
	Lumen	24000lm / 32000lm / 51200lm						
	CRI	70Ra						
	CCT	3000K-6500K(Adjustable)						
	Infused Dimensions	800mmx400mm						
Stand	Lamp Height	8.5kg 9.5kg 10.5kg						
	Height (mm)	1275-1900mm						
	Collapsed Height	1.5m						
	Net Weight	6.3kg						



## LED BALLOON LIGHT

Patent Design 150W-320W

### Product Features



### Package Included



### Product Size



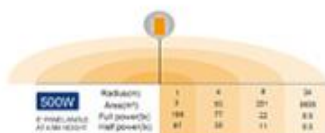
150W/200W/320W

## BL-500W-A LED Balloon Light

NEW

### Specifications

	Item	TM-500W-A			
		Power	500W		
Lamp	Voltage	AC90-300V			
	Frequency	50/60Hz			
	PF	>0.95			
	LED Driver	Imported			
	LED Chips	Lumileds 2835			
	Lumen	8000lm			
	CRI	90Ra			
	ICCT	5000K			
Tripod	Infused Dimension	750mm/1000mm			
	Lamp Weight	17.5kg			
	Height (max)	1620-2000mm			
	Collapsed height	1.5m			
	Net Weight	11.5kg			



## LED BALLOON LIGHT

Patent Design

500W

### Product Features



### Package Included



### Optional



### Product Size



## BL-600W-800W-A LED Balloon Light

NEW

### Specifications

	Item	TM-600W-800W-A			
		Power	600W / 700W / 800W		
Lamp	Voltage	AC90-300V			
	Frequency	50/60Hz			
	PF	>0.95			
	LED Driver	Imported			
	LED Chips	Lumileds 2835			
	Lumen	9600lm / 11200lm / 12800lm			
	CRI	90Ra			
	ICCT	5000K			
Tripod	Infused Dimension	800/920mm			
	Lamp Weight	18.5kg / 18.5kg / 18.5kg			
	Height (max)	1620-2000mm			
	Collapsed height	1.5m			
	Net Weight	11.5kg			



## LED BALLOON LIGHT

Patent Design

600W-800W

### Product Features



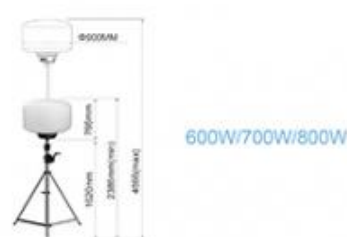
### Package Included



### Optional



### Product Size





## BL-1000W-1400W-A

### LED Balloon Light

#### Specifications

	Model	1000W-1400W			
		Power	1000W	1200W	1400W
Lamp	Voltage	AC100-240V			
	Frequency	50/60Hz			
	PF	≥0.95			
	LED Driver	Instantaneous			
	LED Chips	18000lm / 18000lm / 22400lm			
	Lumen	Lumens 2800			
	CR	70%			
	DOT	800K			
Tripod	Inflated Dimension	1100*800mm			
	Lamp Weight	3kg / 2kg / 3kg			
	Height (mm)	1600-1800mm			
	Collapsed Height	1.5m			
	Net Weight	11.5KG			



Power	Radius (m)	Area (m²)	Full power (s)	Half power (s)
1000W	1	3	260	118
	2	12	65	29
1200W	1	3	200	90
	2	12	50	22
1400W	1	3	170	75
	2	12	43	19

## LED BALLOON LIGHT

Patent Design

1000W-1400W

#### Product Features



#### Package Included



#### Optional



#### Product Size



1000W/1200W/1400W

## COMPANY HONORS



Shenzhen Yongxinru Lighting Technology Co., Ltd.  
Certified by ISO9001, ISO14001, CCC, CE, ROHS, FCC, etc.

LED Balloon Light | LED Street Light | LED Flood Light | LED High Bay Light | LED Wall Light

Email: sales@ushineray.com Web: www.ushineray.com Tel: 86-755-23306606

Add: 3F, 88 Bldg, Xiangsheng Industrial Park, No. 35, Hanyu Rd, Futian St, Bao'an Dist, Shenzhen, China

Balloon lighting manufacturer

2011  
Since



LED Balloon Light  
Professional Manufacturer

## Applications

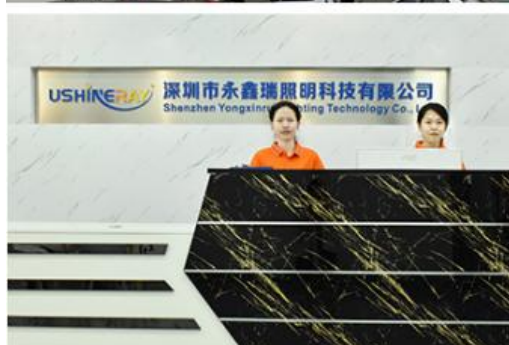






## Company Profile

### OUR FACTORY



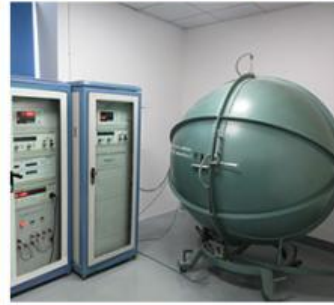


## Guangzhou International Lighting Exhibition





# PRODUCTION SITE





## FAQ

### Q1. Are you a manufacturer?

Yes, we have our own factory with over 10 years of R&D and manufacturing experience based on ISO quality management since 2011.

### Q2. Do you have any MOQ limit for led light orders?

No MOQ, 1pc for sample checking is available.

### Q3. Can I get a lower price for large quantity order?

Yes, please check with our sales staff for the details.

### Q4. How about the lead time of the LED Stadium Lights?

Our standard lead time for samples is 3-5 days, and the normal bulk order lead time is 7-10 days, for the large bulk order lead time, please check with our sales team.

### Q5. Can you provide OEM and ODM services?

OEM and ODM services can be provided, we can provide the services of customized design box and carton as well as laser print logo on the lamp fixture, besides, our engineer can design the lighting products according to your idea.

**Q6. What are the payment terms of your formal order?**

We accept payment via TT, Alibaba Trade Insurance payment, Paypal, and Western Union, and we offer Ex-works, FOB, CIF price terms.

**Q7. How to deal with the defective?**

All of our products are produced in a strict quality control system, the defective rate is less than 0.2% according to our shipment records. We offer 3- 5 years warranty for this product, if there is any defective during the warranty, please provide a picture or video of the working situation of the defective lights, we will ship the new lights to you within a few days or send them together with your next order.

**USHINERAY** Shenzhen Yongxinrui Lighting Technology Co., Ltd.



+8613410523891



joy@ushineray.com



ushineraylight.com

4F, Building C, Junxing Optoelectronic Industrial Park, Fuyuan 2nd Road, FuHai Street, Bao'an District,  
Shenzhen