

## Low Maintenance LED Stadium Lights 1000W Led Sport Court Lights For Skate Park

Our Product Introduction

for more products please visit us on [ushineraylight.com](http://ushineraylight.com)

### Basic Information

- Place of Origin: Guangdong, China
- Brand Name: UShineray
- Certification: CCC, CQC, CE, EMC, RoHS, LVD, Reach
- Model Number: YXR-QC-1000W-C
- Minimum Order Quantity: 1 pcs
- Packaging Details: 1 pcs in Inner box
- Payment Terms: T/T, Paypal, Western Union
- Supply Ability: 1500 Piece/Pieces per Week



### Product Specification

- Lamp Luminous Efficiency(lm/w): 150
- Color Rendering Index(Ra): 80
- Lighting Solutions Service: Lighting And Circuitry Design, DIALux Evo Layout, LitePro DLX Layout
- Working Time (hours): 50000
- Lamp Luminous Flux(lm): 150000
- Beam Angle(°): 8°/20°/ 40°/ 60°/49\*21°(50° Polarized Light)
- Application: Sports Stadiums, Outdoor Stadium, Packing Lot, Football Field, Tennis Court Etc.
- Warranty(Year): 5-Year
- Product Name: LED High Mast Flood Light
- Usage: Sport Stadium Outdoor Lighting
- Highlight: **led stadium lights 1000w, 1000w led sport court lights, low maintenance led stadium lights**



### More Images



## Product Description

### Low Maintenance 1000W Lights at Stadium for Skate Park

Our 1000W lights are the perfect solution for skate parks, offering low maintenance and high performance. These lights provide excellent coverage and brightness, ensuring that every corner of the skate park is well-lit. Designed for durability and efficiency, they minimize the need for frequent upkeep, allowing you to focus more on the activities at the park.

#### Product Features

**Efficient LED Technology:** Features high brightness SMD 5050 LED chips achieving 150lm/W efficacy, delivering superior brightness and energy efficiency.

**Effective Heat Dissipation:** Utilizes 1060 pure aluminum fins with riveting design for excellent heat dissipation, extending LED lifespan up to 50,000 hours in -35°C to 55°C environments.

**Flexible Power Options:** Offers compatibility with renowned driver brands supporting AC100V~277V or AC90-305V inputs, ensuring versatile and reliable operation.

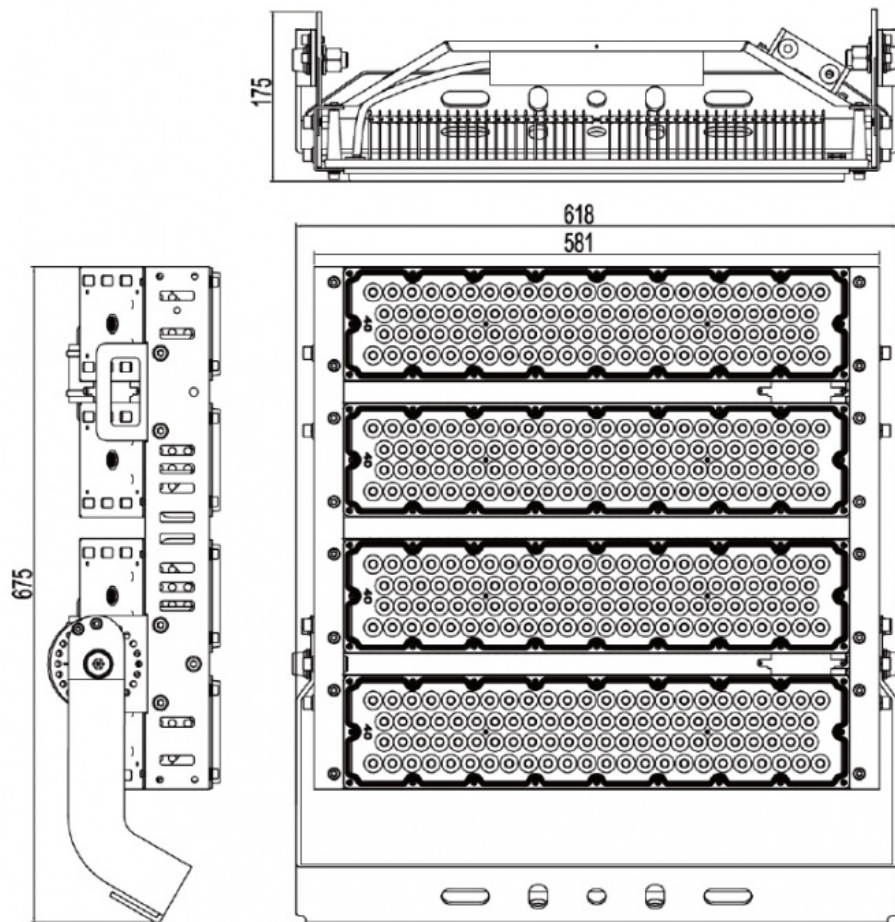
**Adjustable Light Angles:** Provides adjustable angles (8°/20°/40°/60°) and a 180° adjustable bracket for precise lighting adjustments tailored to specific applications.

**Durable Outdoor Build:** IP66 rated for robust protection against dust and water ingress, designed to withstand outdoor elements, backed by a 5-year warranty for peace of mind.

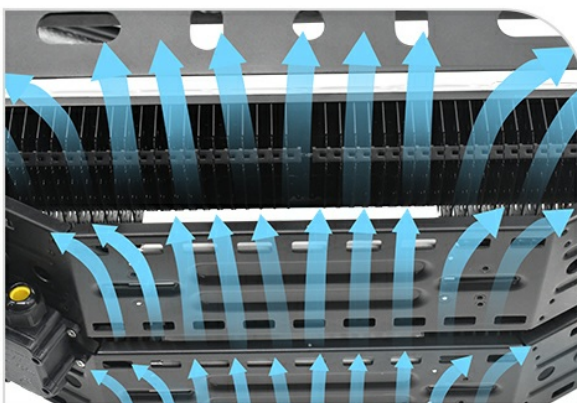
#### Product Parameters

Model	YXR-QC-1000W-C
Wattage	1000W
Other Power Options	250W 500W 750W 1250W 1500W
Lumen	150000±5%lm
Size(mm)	618*675*177 (Four Modules)
Net Weight	22.8kg
Efficacy	150lm/W ±5%
Beam Angle	8°/20°/40°/60° 49°21°(asymmetrical 50°) 49°21°(asymmetrical 65°)
LED	Sanan / Lumileds 5050
Color Temperature	3000K-6500K
Input Voltage	AC100-277V / AC90-305V
CRI	≥70Ra
PF	>0.97
THD	15%<THD<20%
Work Temperature	-35~55°C
Humidity	15%~90% RH, no condensing
IP Grade	IP66
IK Grade	IK08
Warranty	5 Years
Life Span	≥50,000 Hrs (LM70 @ 35°C )
Finish	Sprayed with outdoor special powder
Body Material	PC lens + Aluminum housing
Electronic Safety Grade	Class I
Wire	Rubber cable(3*1mm²) L=0.5m

#### Product Sizes



#### Products Details



1

**1060 pure aluminum fins riveting design**

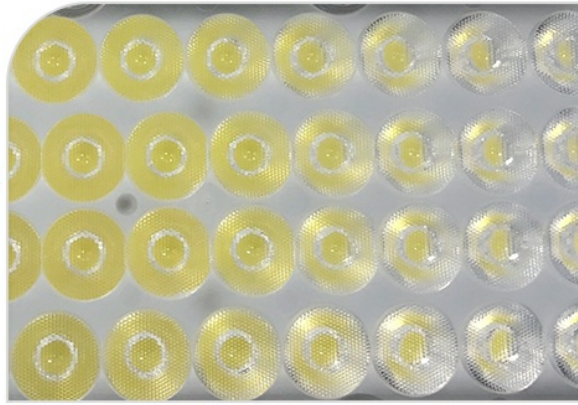
Hollow out in the middle of the heat sink increasing air convection better heat dissipation.



2

### Lumileds SMD5050 LED chips

Up to 160 lm/W light efficiency,  
low decay.



3

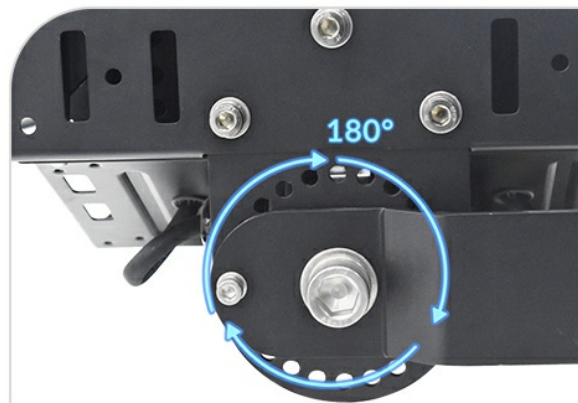
### Meanwell or other famous brand LED driver

High efficiency, energy saving,  
stable, flicker free, longer span  
life.

4

### Thickened steel support

Firm and stable, with the dial,  
180°adjustable, easy to install.

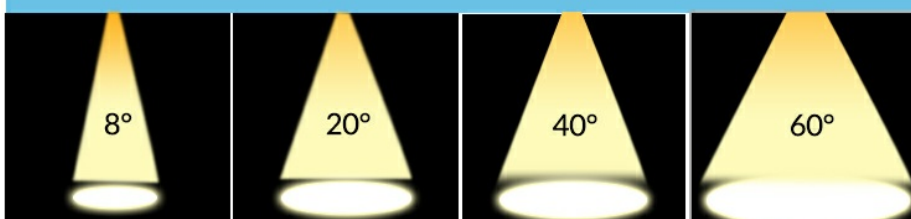


5

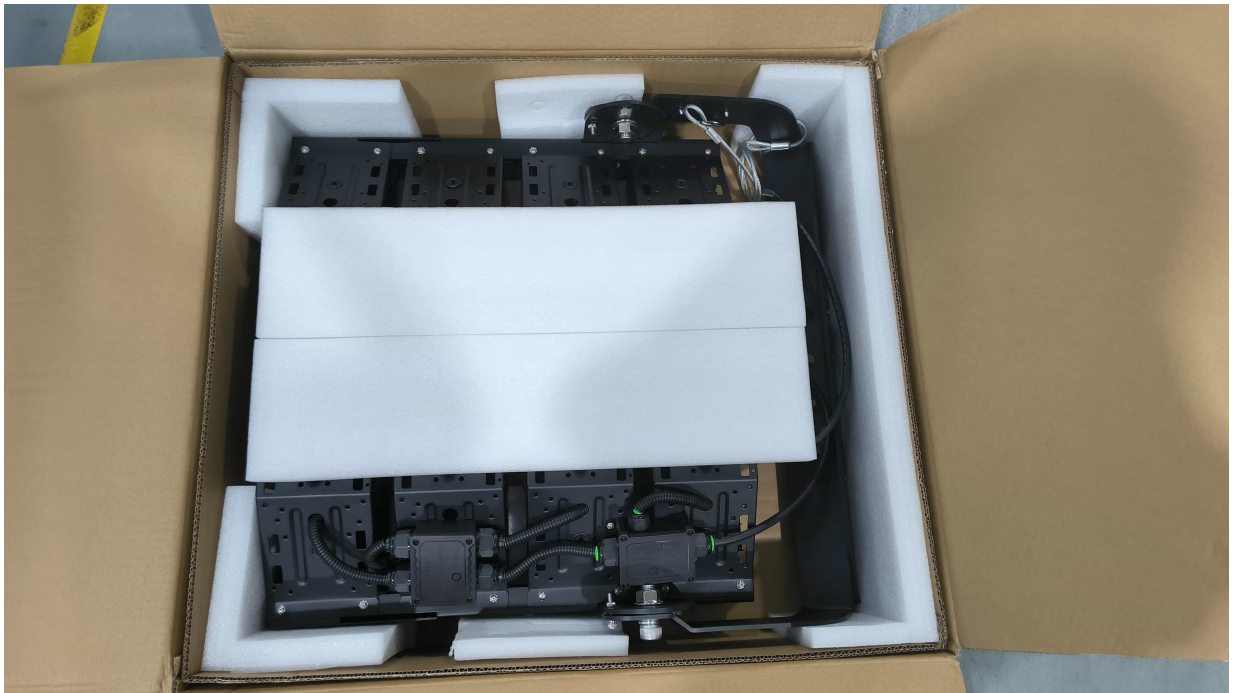
### Whole lamp with Ingress Protection IP66

Sprayed with outdoor special  
powder, anti-corrosion, no fear  
of outdoor harsh environment.

## Various beam angle options



## Package



## Applications





#### Project Cases









**USHINERAY** Shenzhen Yongxinrui Lighting Technology Co., Ltd.

+8613410523891

joy@ushineray.com

ushineraylight.com

4F, Building C, Junxing Optoelectronic Industrial Park, Fuyuan 2nd Road, FuHai Street, Bao'an District, Shenzhen