



## Support Dimmer 5000K 800W 1200W 1400W Led Balloon Light for Portable Light Tower

### Our Product Introduction

#### Basic Information

- Place of Origin: Guangdong, China
- Brand Name: UShineray
- Model Number: YXR-BL-800W-A
- Minimum Order Quantity: 2 pieces
- Price: \$636.50/pieces



#### Product Specification

- Color Temperature(CCT): 5000K
- IP Rating: IP65
- Beam Angle(°): 360° Omni Coverage
- CRI (Ra>): 70
- Input Voltage(V): AC 90-305V
- Lamp Luminous Efficiency(lm/w): 160
- Lamp Luminous Flux(lm): 128000lm
- Warranty(Year): 5-Year
- Working Lifetime(Hour): 50000
- Color Rendering Index(Ra): 70
- Emitting Color: Cold White
- Power Supply: AC
- Light Source: LED
- Support Dimmer: NO



#### More Images



## Product Description

## Video Description

## Product Parameters

YXR-BL-A	500W-A	800W-A	1000W-A	1400W-A
Power	500W	800W	1000W	1400W
Lumen	80000lm	128000lm	160000lm	224000lm
Efficacy	160lm/W			
CCT	3000K~6000K (Adjustable)			
CRI	≥70Ra			
LED	Lumileds 2835			
PF	>0.97			
Input Voltage	AC100-277V			
Frequency	50~60Hz			
Weight(kg)	17.5	18.8	20	22
Sizes(cm)	D70*H60	D90*H60	D110*H85	
Inflated Dimension	700*600mm	900*600mm	1100*850mm	
Beam Angle	360° Omni Coverage			
Work Temp	-35~55℃			
Humidity	15%~90% RH, no condensing			
Finish	Sprayed with outdoor special powder			
Life span	≥50,000 Hrs (LM70 @ 35℃ )			
IP Grade	IP65			
IK Grade	IK 08			

## Details Images



- ◆ Color temperature adjustable, Dimmable(≤320W).
- ◆ Foldable tripod and cover; Lightweight; Portable; Easy quick setup.
- ◆ Glare-free; Diffused light; 360° illumination; Dimmable; On-off button switch.
- ◆ High Efficiency ≥160lm/W; Low power consumption.
- ◆ Weather resistance; Life span > 50,000hrs; Low maintenance.
- ◆ Balloon material: Waterproof, translucent, anti-UV, flame-retardant.
- ◆ Filtration device: Dust absorption.

USHINERAY



LED Balloon Light  
500W~1400W



LED Balloon Light  
60W~320W

## BL-60W-120W-A LED Balloon Light

NEW

### Specifications

Lamp	Model		60W-120W-A	
	Power	60W / 100W / 120W		
	Voltage	AC90-277V		
	Frequency	50/60Hz		
	PF	>0.95		
	LED Driver	Lumileds 2835		
	LED Chips	USNemip		
	Lumen	3000lm / 4000lm / 5000lm		
	CRI	70Ra		
	CCT	3000K-6500K(Adjustable)		
	Infused Dimensions	400x300mm		
	Lamp Height	4.5kg 5.5kg 6.5kg		
	Height(Inch)	1219-1900mm		
	Collapsed Height	1.5m		
	Net Weight	6.3kg		



## LED BALLOON LIGHT

Patent Design 60W-120W

### Product Features



### Package Included



### Product Size



60W/100W/120W

## BL-150W-320W-A LED Balloon Light

NEW

### Specifications

Lamp	Model		150W-320W-A	
	Power	150W / 200W / 320W		
	Voltage	AC90-277V		
	Frequency	50/60Hz		
	PF	>0.95		
	LED Driver	USNemip		
	LED Chips	Lumileds 2835		
	Lumen	24000lm / 32000lm / 51200lm		
	CRI	70Ra		
	CCT	3000K-6500K(Adjustable)		
	Infused Dimensions	800mmx400mm		
	Lamp Height	8.5kg 9.5kg 10.5kg		
	Height(Inch)	1219-1900mm		
	Collapsed Height	1.5m		
	Net Weight	6.3kg		



## LED BALLOON LIGHT

Patent Design 150W-320W

### Product Features



### Package Included



### Product Size



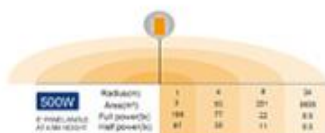
150W/200W/320W

## BL-500W-A LED Balloon Light

NEW

### Specifications

	Item	TM-500W-A			
		1	2	3	4
Lamp	Power	500W			
	Voltage	AC90-300V			
	Frequency	50/60Hz			
	PF	≥0.95			
	LED Driver	Invertorless			
	LED Chips	Lumileds 2835			
	Lumen	8000lm			
	CRI	≥90Ra			
	CCT	5000K			
	Infused Dimension	700mm/1000mm			
Tripod	Lamp Weight	17.5kg			
	Height (max)	1620-3000mm			
	Collapsed height	1.5m			
	Net Weight	11.5kg			



## LED BALLOON LIGHT

Patent Design

500W

### Product Features



### Package Included



### Optional



### Product Size



## BL-600W-800W-A LED Balloon Light

NEW

### Specifications

	Item	TM-600W-800W-A			
		1	2	3	4
Lamp	Power	600W / 700W / 800W			
	Voltage	AC90-300V			
	Frequency	50/60Hz			
	PF	≥0.95			
	LED Driver	Invertorless			
	LED Chips	Lumileds 2835			
	Lumen	9600lm / 11200lm / 12800lm			
	CRI	≥90Ra			
	CCT	5000K			
	Infused Dimension	800/900mm			
Tripod	Lamp Weight	18.5kg / 18.5kg / 18.5kg			
	Height (max)	1620-3000mm			
	Collapsed height	1.5m			
	Net Weight	11.5kg			



## LED BALLOON LIGHT

Patent Design

600W-800W

### Product Features



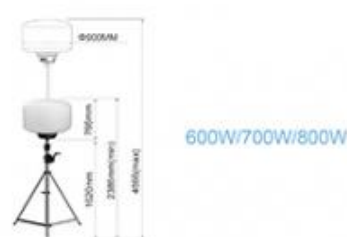
### Package Included



### Optional



### Product Size





# BL-1000W-1400W-A

## LED Balloon Light

NEW

### Specifications

	Model	1000W		1200W		1400W	
		Power	1000W	1200W	1400W	Power	1000W
Lamp	Voltage	AC100-240V					
	Frequency	50/60Hz					
	PF	≥0.95					
	LED Driver	Instantaneous					
	LED Chips	18000lm / 18000lm (24000lm)					
	Lumen	18000lm					
	Color	7000K					
Tripod	ECT	800K					
	Inflated Dimension	1100*800mm					
	Lamp Weight	3kg / 7kg / 8kg					
	Height (mm)	1600-1800mm					
	Collapsed Height	1.5m					
	Net Weight	11.5KG					



1000W	Radius (m)	Area (m²)	1200W		1400W	
			Radius (m)	Area (m²)	Radius (m)	Area (m²)
1000W	1	3.14	1	3.14	1	3.14
	2	12.56	2	12.56	2	12.56
1200W	1	3.14	1	3.14	1	3.14
	2	12.56	2	12.56	2	12.56
1400W	1	3.14	1	3.14	1	3.14
	2	12.56	2	12.56	2	12.56

## LED BALLOON LIGHT

Patent Design

1000W-1400W

### Product Features



### Package Included



### Optional



### Product Size



1000W/1200W/1400W

## COMPANY HONORS



Shenzhen Yongxinru Lighting Technology Co., Ltd.  
Certified by ISO9001, ISO14001, CCC, CE, ROHS, FCC, etc.

LED Balloon Light | LED Street Light | LED Flood Light | LED High Bay Light | LED Wall Light

Email: sales@ushineray.com Web: www.ushineray.com Tel: 86 755 23306638

Add: 3F, 88 Bldg, Xiangsheng Industrial Park, No. 35, Hanyu Rd, Futian St, Bao'an Dist, Shenzhen, China

Balloon lighting manufacturer

2011  
Since



LED Balloon Light  
Professional Manufacturer



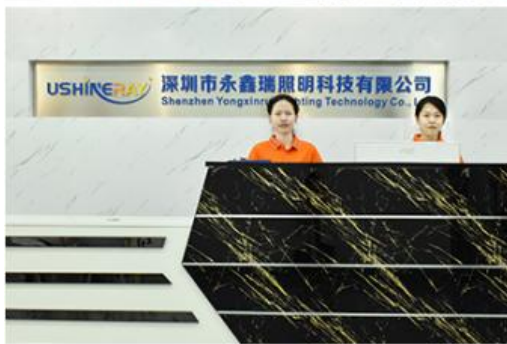
## Applications



Company Profile



## OUR FACTORY







## Guangzhou International Lighting Exhibition



# PRODUCTION SITE







## FAQ

### Q1. Are you a manufacturer?

Yes, we have our own factory with over 10 years of R&D and manufacturing experience based on ISO quality management since 2011.

### Q2. Do you have any MOQ limit for led light orders?

No MOQ, 1pc for sample checking is available.

### Q3. Can I get a lower price for large quantity order?

Yes, please check with our sales staff for the details.

### Q4. How about the lead time of the LED Stadium Lights?

Our standard lead time for samples is 3-5 days, and the normal bulk order lead time is 7-10 days, for the large bulk order lead time, please check with our sales team.

### Q5. Can you provide OEM and ODM services?

OEM and ODM services can be provided, we can provide the services of customized design box and carton as well as laser print logo on the lamp fixture, besides, our engineer can design the lighting products according to your idea.

### Q6. What are the payment terms of your formal order?

We accept payment via TT, Alibaba Trade Insurance payment, Paypal, and Western Union, and we offer Ex-works, FOB, CIF price terms.

### Q7. How to deal with the defective?

All of our products are produced in a strict quality control system, the defective rate is less than 0.2% according to our shipment records. We offer 3- 5 years warranty for this product, if there is any defective during the warranty, please provide a picture or video of the working situation of the defective lights, we will ship the new lights to you within a few days or send them together with your next order.



+8613410523891



joy@ushineray.com



ushineraylight.com

4F, Building C, Junxing Optoelectronic Industrial Park, Fuyuan 2nd Road, FuHai Street, Bao'an District,  
Shenzhen