

## LitePro DLX Layout IP65 600W LED Camp Lights Balloon Tower for Night Construction Site

### Basic Information

- Place of Origin: Guangdong, China
- Brand Name: UShineray
- Model Number: YXR-BL-600W-A
- Minimum Order Quantity: 2 pieces
- Price: \$558.00/pieces 2-99 pieces



### Product Specification

- Color Temperature(CCT): 5000K
- IP Rating: IP65
- Beam Angle(°): 360°
- CRI (Ra>): 70
- Input Voltage(V): AC90-305V
- Lamp Luminous Efficiency(lm/w): 160
- Lamp Luminous Flux(lm): 96000
- Warranty(Year): 5-Year
- Working Lifetime(Hour): 50000
- Working Temperature(°C): -20~60
- Color Rendering Index(Ra): 70
- Emitting Color: Cold White, Warm White, White
- Power Supply: Solar, AC, DC
- Light Source: LED



### More Images





1. Original design function: Filtration device - Dust absorption
2. Wide area coverage with 360° illumination
3. Glare-free, diffused lighting; Lightweight and portable
4. High Efficiency  $\geq 160\text{lm/W}$ ; Low power consumption;
5. Water-resistant LED balloon light rated to IP65 standard
6. Dimmable ( $\leq 320\text{W}$ ); On-off button switch
7. Foldable tripod and cover, easy quick setup;
8. Weather resistant design including a waterproof, UV resistant and fire retardant balloon; Life span > 50,000hrs;
9. Balloon material: Waterproof, translucent, anti-UV, flame-retardant outdoor gauze.

## Product Parameters

Model No. YXR-BL	500W-A	600W-A	700W-A	800W-A	1000W-A	1200W-A	1400W-A
Power	500W	600W	700W	800W	1000W	1200W	1400W
Lumen (lm)	80000	96000	112000	128000	165000	192000	231000
Lamp Weight (kg)	17.5	18.1	18.5	18.8	20	21	22
Inflated Dimension	D70*H60		D90*H60			D110*H85	
Light Efficiency	160lm/W						
LED Driver	Inventronics						
LED Chips	Lumileds 2835						

Voltage	AC 90-305V
CRI	≥70Ra
CCT	5000K
IP Grade	IP65
Work Temp	-20~60°C

Tripod

Height(min-max)	Collapsed Height	Net Weight
1620-3800mm	1.8m	11.5KG

Details Images



- ◆ Color temperature adjustable, Dimmable(≤320W).
- ◆ Foldable tripod and cover; Lightweight; Portable; Easy quick setup.
- ◆ Glare-free; Diffused light; 360° illumination; Dimmable; On-off button switch.
- ◆ High Efficiency ≥160lm/W; Low power consumption.
- ◆ Weather resistance; Life span > 50,000hrs; Low maintenance.
- ◆ Balloon material: Waterproof, translucent, anti-UV, flame -retardant.
- ◆ Filtration device: Dust absorption.



## BL-60W-120W-A LED Balloon Light

NEW

### Specifications

		Model	
Lamp	Power	60W / 100W / 120W	
	Voltage	AC90-277V	
	Frequency	50/60Hz	
	PF	≥0.95	
	LED Driver	Lumileds 2835	
	LED Chips	USNemip	
	Lumen	3600lm / 6000lm / 10000lm	
	CRI	70Ra	
	CCT	3000K-6500K(Adjustable)	
	Infrared Dimension	400/300mm	
Stand	Lamp Height	4.5kg / 5.5kg / 6.5kg	
	Height (mm)	1075-1900mm	
	Expanded Height	1.05m	
	Net Weight	6.3kg	



## LED BALLOON LIGHT

Patent Design 60W-120W

### Product Features



### Package Included



### Product Size



60W/100W/120W

## BL-150W-320W-A LED Balloon Light

NEW

### Specifications

Lamp	Model		150W-320W	
	Power	150W / 200W / 320W		
	Voltage	AC100-277V		
	Frequency	50/60Hz		
	PF	≥0.95		
	LED Driver	USNemip		
	LED Chips	Lumileds 2835		
	Lumen	24000lm / 32000lm / 51000lm		
	CRI	70Ra		
	CCT	3000K-6500K(Adjustable)		
Stand	Infrared Dimension		800mm/400mm	
	Lamp Weight		8.5kg / 9.5kg / 10.5kg	
	Height(Adjustable)		1075-1900mm	
	Collapse Height		1.05m	
	Net Weight		6.3kg	



## LED BALLOON LIGHT

Patent Design 150W-320W

### Product Features



### Package Included



### Product Size



150W/200W/320W

## BL-500W-A LED Balloon Light

NEW

### Specifications

	Item	TM-500W-A			
		Power	500W		
Lamp	Voltage	AC90-300V			
	Frequency	50/60Hz			
	PF	>0.95			
	LED Driver	Intelligent			
	LED Chips	Lumileds 2835			
	Lumen	8000lm			
	CRI	90Ra			
	ICCT	5000K			
Tripod	Infused Dimension	750mm/1000mm			
	Lamp Weight	17.5kg			
	Height (max)	1620-2000mm			
	Collapsed height	1.5m			
	Net Weight	11.5kg			



## LED BALLOON LIGHT

Patent Design

500W

### Product Features



### Package Included



### Optional



### Product Size



## BL-600W-800W-A LED Balloon Light

NEW

### Specifications

	Item	TM-600W-800W-A			
		Power	600W / 700W / 800W		
Lamp	Voltage	AC90-300V			
	Frequency	50/60Hz			
	PF	>0.95			
	LED Driver	Intelligent			
	LED Chips	Lumileds 2835			
	Lumen	9600lm / 11200lm / 12800lm			
	CRI	90Ra			
	ICCT	5000K			
Tripod	Infused Dimension	800/920mm			
	Lamp Weight	18.5kg / 18.5kg / 18.5kg			
	Height (max)	1620-2000mm			
	Collapsed height	1.5m			
	Net Weight	11.5kg			



## LED BALLOON LIGHT

Patent Design

600W-800W

### Product Features



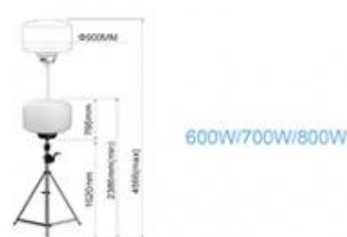
### Package Included



### Optional



### Product Size





## BL-1000W-1400W-A NEW LED Balloon Light

### Specifications

		MODEL A			
		Power	1000W	1200W	1400W
Lamp	Voltage	AC100-240V			
	Frequency	50/60Hz			
	PF	≥0.95			
	LED Driver	Instantaneous			
	LED Chips	18000lm / 18000lm / 22400lm			
	Lumen	Lumens 2800			
	CRI	70Ra			
Tripod	ECT	800K			
	Infrared Extension	1100/800nm			
	Lamp Weight	3kg / 3kg / 3kg			
	Height (mm)	1600-1600mm			
	Collapsed Height	1.5m			
	Net Weight	11.5KG			



1000W 17" (432mm) at 1.5m (4.92ft)	Radius (m)	1 2 3 4			
		Area (m²)	Full power (s)	Half power (s)	0.5
1200W 17" (432mm) at 1.5m (4.92ft)	Radius (m)	1	2	3	4
	Area (m²)	3.14	12.56	28.26	50.24
1400W 17" (432mm) at 1.5m (4.92ft)	Radius (m)	1	2	3	4
	Area (m²)	3.14	12.56	28.26	50.24

## LED BALLOON LIGHT

Patent Design

1000W-1400W

### Product Features



### Package Included



### Optional



### Product Size



1000W/1200W/1400W

## COMPANY HONORS



Shenzhen Yongxinru Lighting Technology Co., Ltd.  
Certified by ISO9001, ISO14001, CCC, CE, ROHS, FCC, etc.

LED Balloon Light | LED Street Light | LED Flood Light | LED High Bay Light | LED Wall Light

Email: sales@yongxinru.com Web: www.yongxinru.com Tel: 86 755 23306636

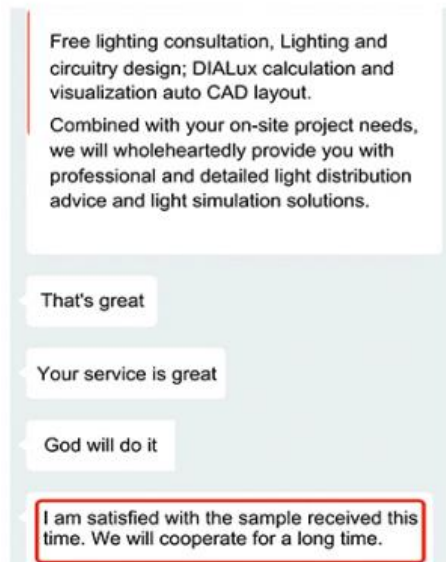
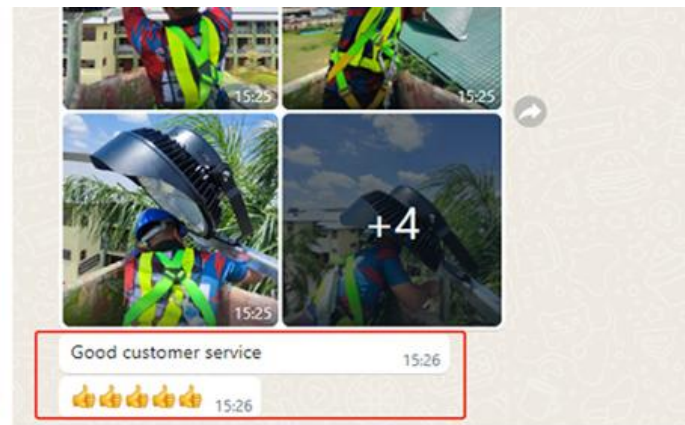
Add: 3F, 88 Bld, Xiangsheng Industrial Park, No. 35, Hanyu Rd, Futian St, Bao'an Dist, Shenzhen, China

Balloon lighting manufacturer

2011  
Since

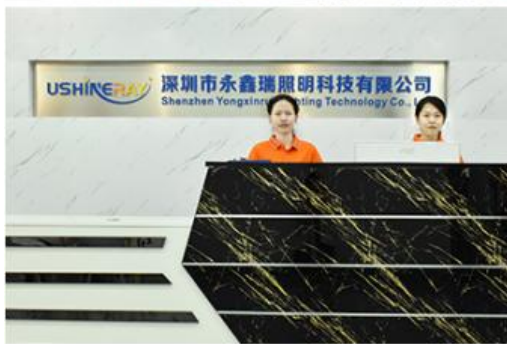


LED Balloon Light  
Professional Manufacturer



## Company Profile

## OUR FACTORY







### Guangzhou International Lighting Exhibition



### FAQ

#### Q1. Are you a manufacturer ?

Yes, we have our own factory with over 10 years R&D and manufacture experience base on ISO quality management since 2011.

#### Q2. Do you have any MOQ limit for led light order?

No MOQ, 1 pcs for sample checking is available.

#### Q3. Can I get a lower price for large quantity order?

Yes, please check with our sales staff for the details.

#### Q4. How about the lead time of UFO LED High Bay Light ?

Our standard lead time for sample is 3-5 days, and normal order lead time is 7-10 days. For the large order lead time, please also check with our sales team.

**Q5. Can you provide OEM and ODM service?**

**we can provide OEM and ODM product, with customized label design on the product and carton box. Or customized carton box, and laser print logo on the lamp fixture.**

**Q6. What is the payment terms of your formal order?**

**We accept payment via T/T, Paypal, Western Union, and we offer EXW terms.**

**Q7. How to deal with the defective?**

**All of our product are produced in strict quality control system, the defective rate is less than 0.2% according to our shipment records. We offer 3- 5 years warranty for this product, if there is any defective during the warranty, please provide the picture or video for the working situation of the defective lights, we will ship the new lights to you within a few days or send it together with your next order.**

 **Shenzhen Yongxinrui Lighting Technology Co., Ltd.**



+8613410523891



joy@ushineray.com



ushineraylight.com

4F, Building C, Junxing Optoelectronic Industrial Park, Fuyuan 2nd Road, FuHai Street, Bao'an District,  
Shenzhen