

## Quick Setup Convenient for Mining 1400W IP65 Balloon Work Light on Mobile Light Tower

Our Product Introduction

for more products please visit us on [ushineraylight.com](http://ushineraylight.com)

### Basic Information

- Place of Origin: Guangdong, China
- Brand Name: UShineray
- Model Number: YXR-BL-1400W-A
- Minimum Order Quantity: 2 pieces
- Price: \$1,119.00/pieces 2-99 pieces



### Product Specification

- Color Temperature(CCT): 5000K
- IP Rating: IP65
- Beam Angle(°): 360°
- CRI (Ra>): 70
- Input Voltage(V): AC 90-305V
- Lamp Luminous Efficiency(lm/w): 160
- Lamp Luminous Flux(lm): 231000
- Warranty(Year): 5-Year
- Working Lifetime(Hour): 50000
- Working Temperature(°C): -20~60
- Color Rendering Index(Ra): 70
- Emitting Color: Cold White, Warm White, White
- Power Supply: Solar, AC, DC
- Light Source: LED



### More Images





- ## Product Parameters

Model No.	500W-A	600W-A	700W-A	800W-A	1000W-A	1200W-A	1400W-A
YXR-BL							
Power	500W	600W	700W	800W	1000W	1200W	1400W
Lumen (lm)	80000	96000	112000	128000	165000	192000	231000
Lamp Weight (kg)	17.5	18.1	18.5	18.8	20	21	22
Inflated Dimension	D70*H60		D90*H60			D110*H85	
Light Efficiency				160lm/W			
LED Driver				Inventronics			
LED Chips				Lumileds 2835			

Voltage	AC 90-305V
CRI	≥70Ra
CCT	5000K
IP Grade	IP65
Work Temp	-20~60°C

Tripod

Height(min-max)	Collapsed Height	Net Weight
1620-3800mm	1.8m	11.5KG

Details Images



- ◆ Color temperature adjustable, Dimmable(≤320W).
- ◆ Foldable tripod and cover; Lightweight; Portable; Easy quick setup.
- ◆ Glare-free; Diffused light; 360° illumination; Dimmable; On-off button switch.
- ◆ High Efficiency ≥160lm/W; Low power consumption.
- ◆ Weather resistance; Life span > 50,000hrs; Low maintenance.
- ◆ Balloon material: Waterproof, translucent, anti-UV, flame-retardant.
- ◆ Filtration device: Dust absorption.



## BL-60W-120W-A LED Balloon Light

NEW

### Specifications

Lamp	Model		60W-120W-A	
	Power	60W / 100W / 120W		
	Voltage	AC90-277V		
	Frequency	50/60Hz		
	PF	>0.95		
	LED Driver	Lumileds 2835		
	LED Chips	USNemip		
	Lumen	3000lm / 4000lm / 5000lm		
	CRI	70Ra		
	CCT	3000K-6500K(Adjustable)		
	Infused Dimensions	400x300mm		
	Lamp Height	4.5kg 5.5kg 6.5kg		
	Height(Inch)	1275-1900mm		
	Collapsed Height	1.5m		
	Net Weight	6.3kg		



## LED BALLOON LIGHT

Patent Design 60W-120W

### Product Features



### Package Included



### Product Size



60W/100W/120W

## BL-150W-320W-A LED Balloon Light

NEW

### Specifications

Lamp	Model		150W-320W-A	
	Power	150W / 200W / 320W		
	Voltage	AC90-277V		
	Frequency	50/60Hz		
	PF	>0.95		
	LED Driver	USNemip		
	LED Chips	Lumileds 2835		
	Lumen	24000lm / 32000lm / 51000lm		
	CRI	70Ra		
	CCT	3000K-6500K(Adjustable)		
	Infused Dimensions	800mmx400mm		
	Lamp Height	8.5kg 9.5kg 10.5kg		
	Height(Inch)	1275-1900mm		
	Collapsed Height	1.5m		
	Net Weight	6.3kg		



## LED BALLOON LIGHT

Patent Design 150W-320W

### Product Features



### Package Included



### Product Size



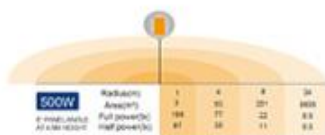
150W/200W/320W

## BL-500W-A LED Balloon Light

NEW

### Specifications

	Item	TM-500W-A			
		1	2	3	4
Lamp	Power	500W			
	Voltage	AC90-300V			
	Frequency	50/60Hz			
	PF	≥0.95			
	LED Driver	Invertorless			
	LED Chips	Lumileds 2835			
	Lumen	8000lm			
	CRI	≥90Ra			
	GCCT	5000K			
	Infused Dimension	700mm/1000mm			
Tripod	Lamp Weight	17.5kg			
	Height (max)	1620-3000mm			
	Collapsed height	1.5m			
	Net Weight	11.5kg			



## LED BALLOON LIGHT

Patent Design

500W

### Product Features



### Package Included



### Optional



### Product Size



## BL-600W-800W-A LED Balloon Light

NEW

### Specifications

	Item	TM-600W-800W-A			
		1	2	3	4
Lamp	Power	600W / 700W / 800W			
	Voltage	AC90-300V			
	Frequency	50/60Hz			
	PF	≥0.95			
	LED Driver	Invertorless			
	LED Chips	Lumileds 2835			
	Lumen	9600lm / 11200lm / 12800lm			
	CRI	≥90Ra			
	GCCT	5000K			
	Infused Dimension	800/900mm			
Tripod	Lamp Weight	18.5kg / 18.5kg / 18.5kg			
	Height (max)	1620-3000mm			
	Collapsed height	1.5m			
	Net Weight	11.5kg			



## LED BALLOON LIGHT

Patent Design

600W-800W

### Product Features



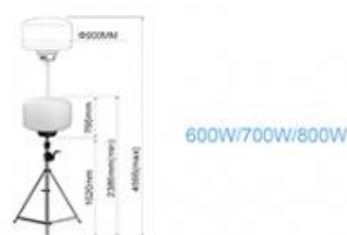
### Package Included



### Optional



### Product Size





## BL-1000W-1400W-A NEW LED Balloon Light

### Specifications

	Model	1000W		1200W		1400W	
		Power	1000W	1200W	1400W	Power	1000W
Lamp	Voltage	AC100-240V					
	Frequency	50/60Hz					
	PF	≥0.95					
	LED Driver	Instantaneous					
	LED Chips	18000lm / 18000lm / 22400lm					
	Lumen	Lumens 2800					
Tripod	CM	70cm					
	ECT	800K					
	Infrared Dimension	1100*800mm					
	Lamp Weight	3kg / 3kg / 3kg					
	Height (mm)	1600-1600mm					
	Collapsed Height	1.5m					
	Net Weight	11.5KG					



Power (W)	Radius (m)	Area (m²)	Full power (s)	Half power (s)
1000W	1	3.14	280	118
	2	12.56	118	48
1200W	1	3.14	34	14
	2	12.56	14	6
1400W	1	3.14	48	20
	2	12.56	20	8

## LED BALLOON LIGHT

Patent Design

1000W-1400W

### Product Features



### Package Included



Orange Diffuser



Tripod Adapter



Tripod Case for Light Fixture

### Optional



All White Diffuser



Blue Diffuser



Black Diffuser



Tripod



Remote

### Product Size



1000W/1200W/1400W

## COMPANY HONORS



Shenzhen Yongxinru Lighting Technology Co., Ltd.  
Certified by ISO9001, ISO14001, CCC, CE, ROHS, FCC, etc.

LED Balloon Light | LED Street Light | LED Flood Light | LED High Bay Light | LED Wall Light

Email: sales@yongxinru.com Web: www.yongxinru.com Tel: 86 755 23306638

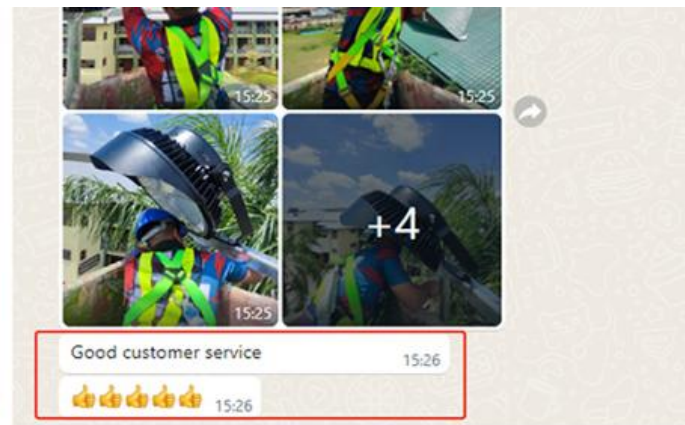
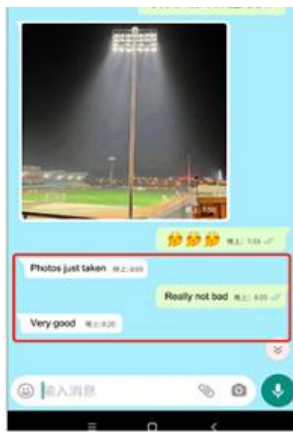
Add: 3F, 88 Bld, Xiangsheng Industrial Park, No. 35, Hanyu Rd, Futian St, Bao'an Dist, Shenzhen, China

Balloon lighting manufacturer

2011  
Since



LED Balloon Light  
Professional Manufacturer



Free lighting consultation, Lighting and circuitry design; DIALux calculation and visualization auto CAD layout.

Combined with your on-site project needs, we will wholeheartedly provide you with professional and detailed light distribution advice and light simulation solutions.

That's great

Your service is great

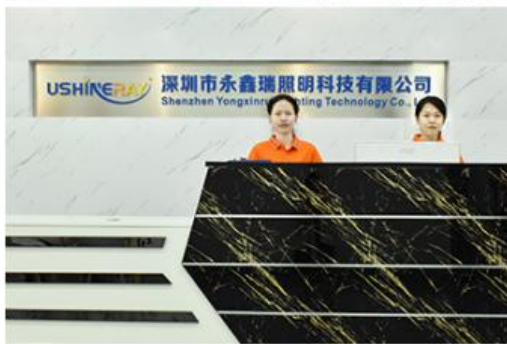
God will do it

I am satisfied with the sample received this time. We will cooperate for a long time.



## Company Profile

## OUR FACTORY







### Guangzhou International Lighting Exhibition



### FAQ

#### Q1. Are you a manufacturer ?

Yes, we have our own factory with over 10 years R&D and manufacture experience base on ISO quality management since 2011.

#### Q2. Do you have any MOQ limit for led light order?

No MOQ, 1 pcs for sample checking is available.

#### Q3. Can I get a lower price for large quantity order?

Yes, please check with our sales staff for the details.

#### Q4. How about the lead time of UFO LED High Bay Light ?

Our standard lead time for sample is 3-5 days, and normal order lead time is 7-10 days. For the large order lead time, please also check with our sales team.

**Q5. Can you provide OEM and ODM service?**

**we can provide OEM and ODM product, with customized label design on the product and carton box. Or customized carton box, and laser print logo on the lamp fixture.**

**Q6. What is the payment terms of your formal order?**

**We accept payment via T/T, Paypal, Western Union, and we offer EXW terms.**

**Q7. How to deal with the defective?**

**All of our product are produced in strict quality control system, the defective rate is less than 0.2% according to our shipment records. We offer 3- 5 years warranty for this product, if there is any defective during the warranty, please provide the picture or video for the working situation of the defective lights, we will ship the new lights to you within a few days or send it together with your next order.**

 **Shenzhen Yongxinrui Lighting Technology Co., Ltd.**



+8613410523891



joy@ushineray.com



ushineraylight.com

4F, Building C, Junxing Optoelectronic Industrial Park, Fuyuan 2nd Road, FuHai Street, Bao'an District,  
Shenzhen