

## 1000W Portable Balloon Shape Lighting Towers with Cart and Generator Patent Design

Our Product Introduction

for more products please visit us on [ushineraylight.com](http://ushineraylight.com)

### Basic Information

- Place of Origin: Guangdong, China
- Brand Name: UShineray
- Model Number: YXR-BL-1000W-A
- Minimum Order Quantity: 1pcs
- Payment Terms: T/T, Paypal, Western Union



### Product Specification

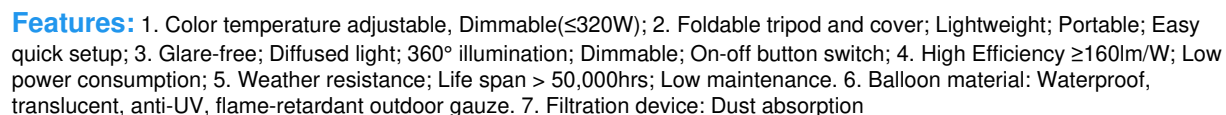
- Color Temperature(CCT): 5000K
- IP Rating: IP65
- Beam Angle(°): 360°
- CRI (Ra>): 70
- Input Voltage(V): AC90-305V
- Lamp Luminous Efficiency(lm/w): 160
- Lamp Luminous Flux(lm): 160000
- Warranty(Year): 5-Year
- Working Lifetime(Hour): 50000
- Color Rendering Index(Ra): 70
- Emitting Color: White
- Power Supply: AC
- Light Source: LED
- Support Dimmer: NO



### More Images



## Product Description



Model E	500W-A	600W-A	700W-A	800W-A	1000W-A	1200W-A	1400W-A
YXR-BL-							
Power	500W	600W	700W	800W	1000W	1200W	1400W
Lumen(LM)	80000	96000	112000	128000	165000	192000	213000
Weight(kg)	17.5	18.1	18.5	18.8	20	21	22
Inflated Dimension	D70*H60		D90*H60			D110*H85	
Efficacy				160LM/W			
CCT				5000K			
CRI				≥70Ra			
LED Chips				Lumileds 2835			
LED Driver				Ivtronics			
PF				≥0.95			

Input Voltage	AC90-305V	
Life Span	50000 hrs	
IP	IP65	
	Tripod	
Height(min-max)	Collapsed Height	Net Weight
1620-3800mm	1.8m	11.5kg

## Details Images



- ◆ Color temperature adjustable, Dimmable(≤320W).
- ◆ Foldable tripod and cover; Lightweight; Portable; Easy quick setup.
- ◆ Glare-free; Diffused light; 360° illumination; Dimmable; On-off button switch.
- ◆ High Efficiency ≥160lm/W; Low power consumption.
- ◆ Weather resistance; Life span > 50,000hrs; Low maintenance.
- ◆ Balloon material: Waterproof, translucent, anti-UV, flame -retardant.
- ◆ Filtration device: Dust absorption.



## BL-60W-120W-A LED Balloon Light

NEW

### Specifications

Lamp	Model		60W-120W-A	
	Power	60W / 100W / 120W		
	Voltage	AC90-277V		
	Frequency	50/60Hz		
	PF	>0.95		
	LED Driver	Lumileds 2835		
	LED Chips	USNemip		
	Lumen	3000lm / 4000lm / 5000lm		
	CRI	70Ra		
	CCT	3000K-6500K(Adjustable)		
	Infused Dimension	400x300mm		
	Lamp Height	4.5kg 5.5kg 6.5kg		
	Height(Inch)	1215-1900mm		
	Collapsed Height	1.5m		
	Net Weight	6.3kg		

Power (W)	Beam Angle (°)	Beam Diameter (m)	Beam Area (m²)	Beam Area (m²)	Beam Area (m²)
60W	2°	1.25	1.56	1.56	1.56
100W	2°	1.56	2.44	2.44	2.44
120W	2°	1.78	3.17	3.17	3.17

## LED BALLOON LIGHT

Patent Design 60W-120W

### Product Features



Air Inflation Function

### Package Included



### Product Size



60W/100W/120W

## BL-150W-320W-A LED Balloon Light

NEW

### Specifications

Lamp	Model		150W-320W-A	
	Power	150W / 200W / 320W		
	Voltage	AC90-277V		
	Frequency	50/60Hz		
	PF	>0.95		
	LED Driver	USNemip		
	LED Chips	Lumileds 2835		
	Lumen	24000lm / 30000lm / 51000lm		
	CRI	70Ra		
	CCT	3000K-6500K(Adjustable)		
	Infused Dimension	800mmx400mm		
	Lamp Height	8.5kg 9.5kg 11.5kg		
	Height(Inch)	1215-1900mm		
	Collapsed Height	1.5m		
	Net Weight	6.3kg		

<b>150W</b>	Radius(m)	1	4	8	14.5
2° BEAM ANGLE AT 2.9M HEIGHT	Area(m²)	3	99	391	754
	Lux(Lx)	219	46	12.5	2.5
<b>200W</b>	Radius(m)	1	4	8	16.5
2° BEAM ANGLE AT 2.9M HEIGHT	Area(m²)	3	99	391	1194
	Lux(Lx)	288	59	15	2.5
<b>320W</b>	Radius(m)	1	4	8	20.5
2° BEAM ANGLE AT 2.9M HEIGHT	Area(m²)	3	99	391	1520
	Lux(Lx)	345	69	17	2.5

## LED BALLOON LIGHT

Patent Design 150W-320W

### Product Features



Air Inflation Function

### Package Included



### Product Size



150W/200W/320W

## BL-500W-A LED Balloon Light

NEW

### Specifications

	Item	TM-500W-A			
		Power	500W		
Lamp	Voltage	AC90-300V			
	Frequency	50/60Hz			
	PF	>0.95			
	LED Driver	Imported			
	LED Chips	Lumileds 2835			
	Lumen	8000lm			
	CRI	90Ra			
	ICCT	5000K			
Tripod	Infused Dimension	750mm/1000mm			
	Lamp Weight	17.5kg			
	Height (max)	1620-2000mm			
	Collapsed height	1.5m			
	Net Weight	11.5kg			



## LED BALLOON LIGHT

Patent Design

500W

### Product Features



### Package Included



### Optional



### Product Size



## BL-600W-800W-A LED Balloon Light

NEW

### Specifications

	Item	TM-600W-800W-A			
		Power	600W / 700W / 800W		
Lamp	Voltage	AC90-300V			
	Frequency	50/60Hz			
	PF	>0.95			
	LED Driver	Imported			
	LED Chips	Lumileds 2835			
	Lumen	9600lm / 11200lm / 12800lm			
	CRI	90Ra			
	ICCT	5000K			
Tripod	Infused Dimension	800/920mm			
	Lamp Weight	18.5kg / 18.5kg / 18.5kg			
	Height (max)	1620-2000mm			
	Collapsed height	1.5m			
	Net Weight	11.5kg			



## LED BALLOON LIGHT

Patent Design

600W-800W

### Product Features



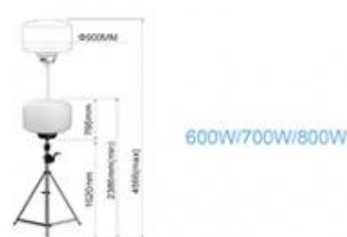
### Package Included



### Optional



### Product Size





# BL-1000W-1400W-A

## LED Balloon Light

NEW

### Specifications

	Model	1000W-1400W	
		1000W	1400W
Lamp	Power	1000W	1400W
	Voltage	AC100-240V	
	Frequency	50/60Hz	
	PF	>0.95	
	LED Driver	Instantaneous	
	LED Chips	18000lm / 18000lm (24000lm)	
	Lumen	18000lm	24000lm
	CR	70Ra	
	DOT	800K	
	Infrared Dimension	1100*800mm	
Tripod	Lamp Weight	3kg / 2kg / 2kg	
	Height (mm)	1600-1800mm	
	Collapsed Height	1.5m	
	Net Weight	11.5kg	



Power	Radius (m)	Area (m²)	Full power (s)	Half power (s)
1000W	1	3.14	240	120
1200W	1	3.14	200	100
1400W	1	3.14	160	80

## LED BALLOON LIGHT

Patent Design

1000W-1400W

### Product Features



### Package Included



### Optional



### Product Size



1000W/1200W/1400W

## COMPANY HONORS



Shenzhen Yongxinru Lighting Technology Co., Ltd.  
Certified by ISO9001, ISO14001, CCC, CE, ROHS, FCC, etc.

LED Balloon Light | LED Street Light | LED Flood Light | LED High Bay Light | LED Wall Light

Email: sales@yongxinru.com Web: www.yongxinru.com Tel: 86-755-23306606

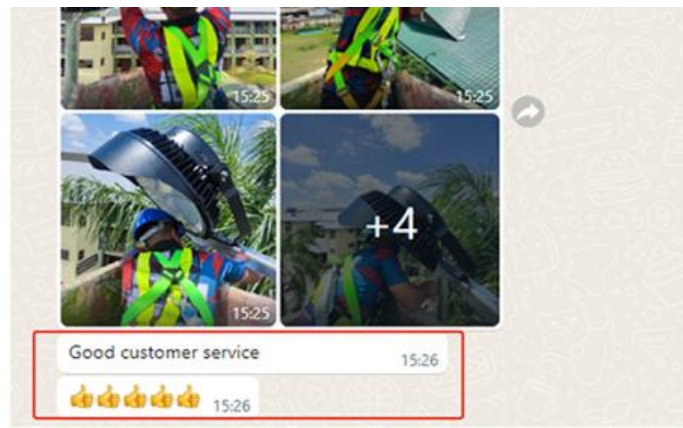
Add: 3F, 88 Bldg, Xiangsheng Industrial Park, No. 35, Haoyue Rd, Futian St, Bao'an Dist, Shenzhen, China

Balloon lighting manufacturer

2011  
Since



LED Balloon Light  
Professional Manufacturer



Free lighting consultation, Lighting and circuitry design; DIALux calculation and visualization auto CAD layout.  
Combined with your on-site project needs, we will wholeheartedly provide you with professional and detailed light distribution advice and light simulation solutions.

That's great

Your service is great

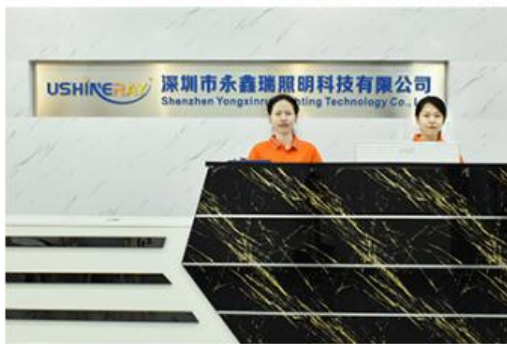
God will do it

I am satisfied with the sample received this time. We will cooperate for a long time.



## Company Profile

## OUR FACTORY





# PRODUCTION SITE





## Guangzhou International Lighting Exhibition





## FAQ

### Q1. Are you a manufacturer ?

Yes, we have our own factory with over 10 years R&D and manufacture experience base on ISO quality management since 2011.

### Q2. Do you have any MOQ limit for led light order?

No MOQ, 1pc for sample checking is available.

### Q3. Can I get a lower price for large quantity order?

Yes, please check with our sales staff for the details.

### Q4. How about the lead time of ordering?

Our standard lead time for sample is 3-5 days, and normal order lead time is 7-10 days. For the large order lead time, please also

check with our sales team.

### Q5. Can you provide OEM and ODM service?

we can provide OEM and ODM product, with customized label design on the product and carton box. Or customized carton box, and

laser print logo on the lamp fixture.

### Q6. What is the payment terms of your formal order?

We accept payment via TT, Paypal, Western Union, and we offer EXW terms.

### Q7. How to deal with the defective?

All of our product are produced in strict quality control system, the defective rate is less than 0.2% according to our shipment records. We offer 3- 5 years warranty for this product, if there is any defective during the warranty,

please provide the picture or video for the working situation of the defective lights, we will ship the new lights to you within a few days or send it together with your next order.

**USHINERAY** Shenzhen Yongxinrui Lighting Technology Co., Ltd.



+8613410523891



joy@ushineray.com



ushineraylight.com

4F, Building C, Junxing Optoelectronic Industrial Park, Fuyuan 2nd Road, FuHai Street, Bao'an District,  
Shenzhen