

## High Voltage 250W Led Stadium Flood Lights Stadium Basketball Portable Football Field Lights

Our Product Introduction

for more products please visit us on [ushineraylight.com](http://ushineraylight.com)

### Basic Information

- Place of Origin: Guangdong, China
- Brand Name: UShineray
- Model Number: YXR-QC-250W-A
- Minimum Order Quantity: 1pcs
- Payment Terms: T/T, Paypal, Western Union



### Product Specification

- Support Dimmer: Yes
- Lighting Solutions Service: Lighting And Circuitry Design, DIALux Evo Layout, LitePro DLX Layout, Auto CAD Layout, Onsite Metering
- Lamp Body Material: Aluminum Alloy
- Light Source: LED
- Warranty(Year): 5-Year
- Product Name: LED High Mast Flood Light
- Power: 250-2000W
- Certificate: CE RoHS
- LED Driver: Moso/Normal
- Application: Sports Stadium Field
- Highlight: 250w led stadium flood lights, 250w led sports flood lights, stadium led sports flood lights



### More Images



## Product Description

### High Voltage 250W Football Floodlights Stadium Light for Basketball Court

Experience powerful illumination with our 250W high voltage football floodlights, designed specifically for basketball courts. These stadium lights deliver intense brightness, ensuring a well-lit playing area and enhancing visibility. Ideal for both amateur and professional games, they offer exceptional performance and reliability.



### Product Features

1. Three installation methods: thickened bracket, thickened base, thickened round tube installation;
2. Built-in power supply, IP66 waterproof and sunscreen, aluminum drive house can fast conduct the heat from the driver to be out;
3. Professional stadium light distribution lens, with high lumen chips to maximize the lumen output, the whole lamp light efficiency is up to 150 lm/V+5%;
4. Single module supports adjustable angle; bracket can be adjusted 180°;
5. Thickened heat dissipation ribs and fast heat dissipation ensure the life span of the light source.

### Product Parameters

Model	YXR-QC-250W-A
Power	250W
Lumens(lm)	37500
Other Power Options	500W/750W/1000W/1250W/1500W/2000W
Weight(kg)	9.2
Sizes(mm)	315*420*155
Efficacy	150lm/W
CCT	2700-6500K
CRI	≥70Ra
LED Chips	San'an 3030/Lumileds 3030/San'an 5050/Lumileds 5050
PF	>0.95
Input Voltage	AC100-277V(Moso)
Beam Angle	10°/25°/45°/60°/ asymmetrical 80°*155°(5050) 60°/ asymmetrical 80°*155°(3030)
Work Temp	-35~55°C
Humidity	15%~90% RH, no condensing
Finish	Sprayed with outdoor special powder
Life Span	50000
IP Grade	IP66
IK Grade	IK08
Body material	PC lens + Aluminum housing
Power Wire	Rubber cable(3*0.75mm²) L=0.3m
Electronic safety grade	Class I

Details Images







Since 2010

12 years experience

High power outdoor LED lighting:  
LED Stadium Lights, LED Flood lights.

[View All](#)



## PRODUCT PARAMETERS

## PRODUCT DISPLAY



Outdoor LED Stadium Lights  
5050 SMD LED chips

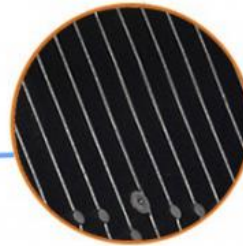
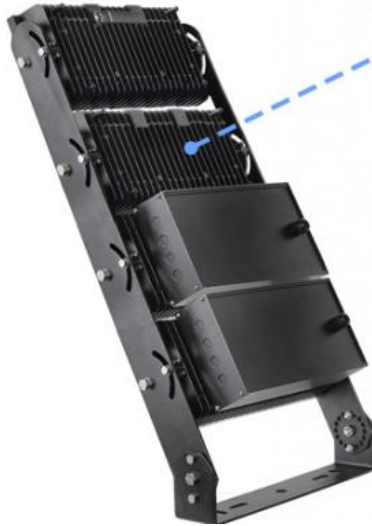
Meanwell driver or other brand  
power supply

Beam angle optional: 10°/25°/60°  
S.steel screws, anti-rust, anti-  
corrosion

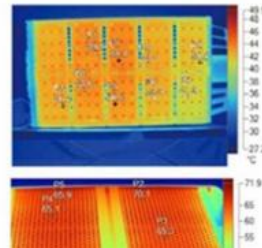
Light source life: LM80 certified,  
>50000hours

Structure: Adopt large area heat  
pipe and fins contact

### Excellent heat dissipation

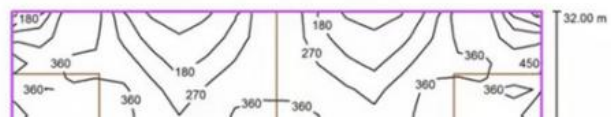


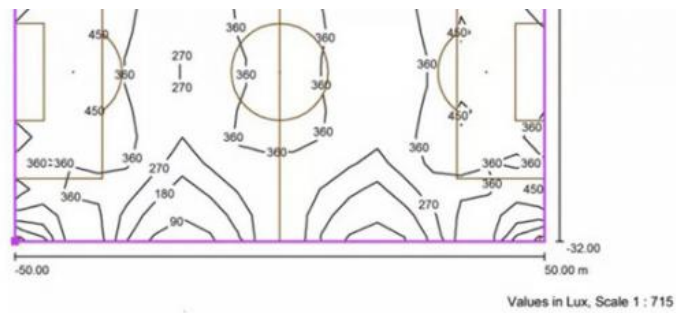
The lamp radiator with a large area  
of heat pipe and fins contact to form  
effective convective cooling.



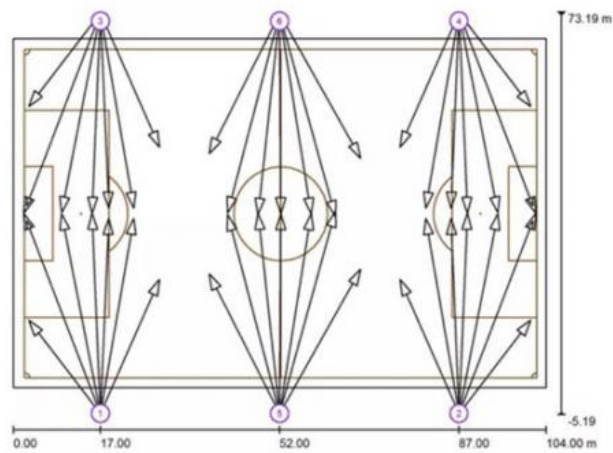


Outdoor scene 1/Football pitch 1Grid computing(PA) /Isolines(E, Perpendicular)



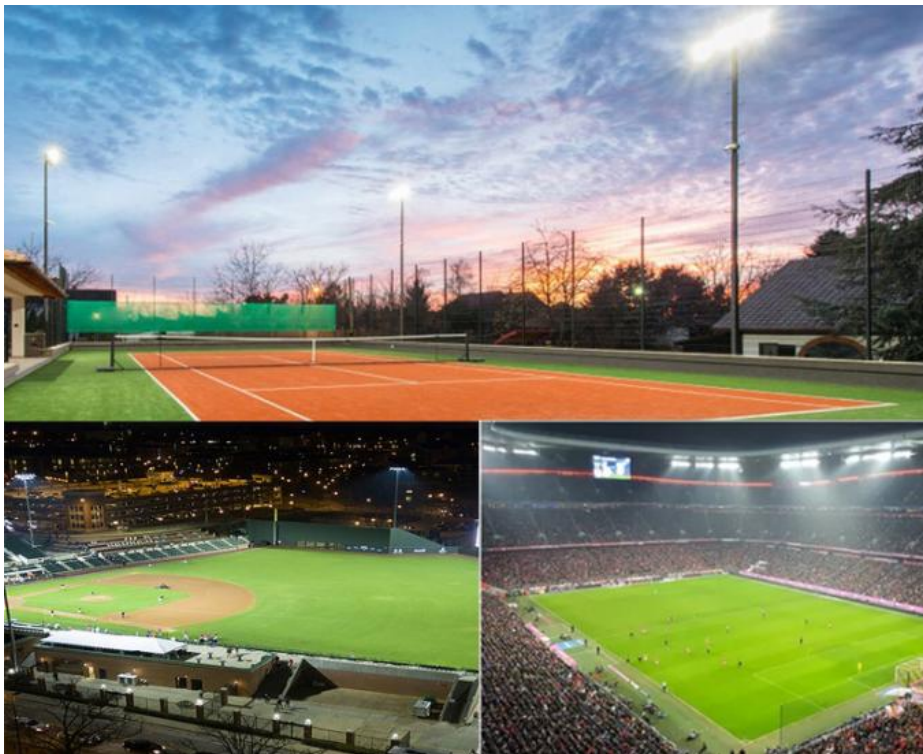


Outdoor scene 1 / Sport Luminaires(Coordinates List)



## Applications

Sports lighting area: football field, badminton court, basketball court, baseball field, tennis court, table tennis field, racetrack.  
High pole lighting area: mining area, outdoor construction area, mobile tower lighting.



4F, Building C, Junxing Optoelectronic Industrial Park, Fuyuan 2nd Road, FuHai Street, Bao'an District,  
Shenzhen