

160000lm 1000W Inflatable Tripod Balloon Mobile Led Light Tower for Outdoor Activities

Our Product Introduction

for more products please visit us on ushineraylight.com

Basic Information

- Place of Origin: Guangdong, China
- Brand Name: UShineray
- Model Number: YXR-BL-1000W-A
- Minimum Order Quantity: 2 pieces
- Price: \$772.90 - \$796.90/pieces



Product Specification

- Color Temperature(CCT): 5000K
- IP Rating: IP65
- Beam Angle(°): 360°
- CRI (Ra>): 70
- Input Voltage(V): AC90-305V
- Lamp Luminous Efficiency(lm/w): 160
- Lamp Luminous Flux(lm): 160000
- Warranty(Year): 5-Year
- Working Lifetime(Hour): 50000
- Color Rendering Index(Ra): 70
- Emitting Color: White
- Power Supply: AC
- Light Source: LED
- Support Dimmer: NO



More Images



Product Description

Product Description



Features: 1. Color temperature adjustable, Dimmable($\leq 320W$); 2. Foldable tripod and cover; Lightweight; Portable; Easy quick setup; 3. Glare-free; Diffused light; 360° illumination; Dimmable; On-off button switch; 4. High Efficiency $\geq 160lm/W$; Low power consumption; 5. Weather resistance; Life span > 50,000hrs; Low maintenance. 6. Balloon material: Waterproof, translucent, anti-UV, flame-retardant outdoor gauze. 7. Filtration device: Dust absorption

Specification

Model E YXR-BL-	500W-A	600W-A	700W-A	800W-A	1000W-A	1200W-A	1400W-A
Power	500W	600W	700W	800W	1000W	1200W	1400W
Lumen(L M)	80000	96000	112000	128000	165000	192000	213000
Weight(kg)	17.5	18.1	18.5	18.8	20	21	22
Inflated Dimensio n	D70*H60		D90*H60		D110*H85		
Efficacy				160LM/W			
CCT				5000K			
CRI				≥70Ra			
LED Chips				Lumileds 2835			
LED Driver				Iventronics			
PF				≥0.95			

Input Voltage	AC90-305V	
Life Span	50000 hrs	
IP	IP65	
	Tripod	
Height(min-max)	Collapsed Height	Net Weight
1620-3800mm	1.8m	11.5kg

Details Images



- ◆ Color temperature adjustable, Dimmable(≤320W).
- ◆ Foldable tripod and cover; Lightweight; Portable; Easy quick setup.
- ◆ Glare-free; Diffused light; 360° illumination; Dimmable; On-off button switch.
- ◆ High Efficiency ≥160lm/W; Low power consumption.
- ◆ Weather resistance; Life span > 50,000hrs; Low maintenance.
- ◆ Balloon material: Waterproof, translucent, anti-UV, flame-retardant.
- ◆ Filtration device: Dust absorption.



BL-60W-120W-A LED Balloon Light

NEW

Specifications

Lamp	Model		60W-120W-A	
	Power	60W / 100W / 120W		
	Voltage	AC90-277V		
	Frequency	50/60Hz		
	PF	>0.95		
	LED Driver	Lumileds 2835		
	LED Chips	USNemip		
	Lumen	3000lm / 4000lm / 4500lm		
	CRI	70Ra		
	CCT	3000K-6500K(Adjustable)		
	Infused Dimensions	400x300mm		
	Lamp Height	4.5kg 5.5kg 6.5kg		
	Height(Inch)	1215-1900mm		
	Collapsed Height	1.5m		
	Net Weight	6.3kg		

60W		100W		120W	
Beam Angle	2.7m Height	Beam Angle	2.7m Height	Beam Angle	2.7m Height
Radius(m)	1.4	Radius(m)	1.4	Radius(m)	1.4
Area(m²)	1.96	Area(m²)	1.96	Area(m²)	1.96
Lumens	175	Lumens	175	Lumens	175
	0.5		0.5		0.5
Radius(m)	1.4	Radius(m)	1.4	Radius(m)	1.4
Area(m²)	1.96	Area(m²)	1.96	Area(m²)	1.96
Lumens	175	Lumens	175	Lumens	175
	0.5		0.5		0.5



LED BALLOON LIGHT

Patent Design 60W-120W

Product Features



Package Included



Product Size



60W/100W/120W

BL-150W-320W-A LED Balloon Light

NEW

Specifications

Lamp	Model		150W-320W-A	
	Power	150W / 200W / 320W		
	Voltage	AC90-277V		
	Frequency	50/60Hz		
	PF	>0.95		
	LED Driver	USNemip		
	LED Chips	Lumileds 2835		
	Lumen	24000lm / 32000lm / 51000lm		
	CRI	70Ra		
	CCT	3000K-6500K(Adjustable)		
	Infused Dimensions	800mmx400mm		
	Lamp Height	8.5kg 9.5kg 10.5kg		
	Height(Inch)	1215-1900mm		
	Collapsed Height	1.5m		
	Net Weight	6.3kg		

150W		200W		320W	
Beam Angle	2.7m Height	Beam Angle	2.7m Height	Beam Angle	2.7m Height
Radius(m)	1.4	Radius(m)	1.4	Radius(m)	1.4
Area(m²)	1.96	Area(m²)	1.96	Area(m²)	1.96
Lumens	219	Lumens	219	Lumens	219
	0.5		0.5		0.5
Radius(m)	1.4	Radius(m)	1.4	Radius(m)	1.4
Area(m²)	1.96	Area(m²)	1.96	Area(m²)	1.96
Lumens	219	Lumens	219	Lumens	219
	0.5		0.5		0.5



LED BALLOON LIGHT

Patent Design 150W-320W

Product Features



Package Included



Product Size



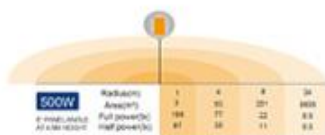
150W/200W/320W

BL-500W-A LED Balloon Light

NEW

Specifications

	Item	TM-500W-A			
		1	2	3	4
Lamp	Power	500W			
	Voltage	AC90-300V			
	Frequency	50/60Hz			
	PF	≥0.95			
	LED Driver	Invertorless			
	LED Chips	Lumileds 2835			
	Lumen	8000lm			
	CRI	≥90Ra			
	GCCT	5000K			
	Infused Dimension	700mm/1000mm			
Tripod	Lamp Weight	17.5kg			
	Height (max)	1620-3000mm			
	Collapsed height	1.5m			
	Net Weight	11.5kg			



LED BALLOON LIGHT

Patent Design

500W

Product Features



Package Included



Optional



Product Size



BL-600W-800W-A LED Balloon Light

NEW

Specifications

	Item	TM-600W-800W-A			
		1	2	3	4
Lamp	Power	600W / 700W / 800W			
	Voltage	AC90-300V			
	Frequency	50/60Hz			
	PF	≥0.95			
	LED Driver	Invertorless			
	LED Chips	Lumileds 2835			
	Lumen	9600lm / 11200lm / 12800lm			
	CRI	≥90Ra			
	GCCT	5000K			
	Infused Dimension	800/900mm			
Tripod	Lamp Weight	18.5kg / 18.5kg / 18.5kg			
	Height (max)	1620-3000mm			
	Collapsed height	1.5m			
	Net Weight	11.5kg			



LED BALLOON LIGHT

Patent Design

600W-800W

Product Features



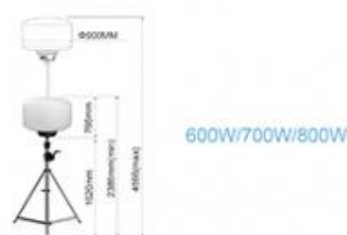
Package Included



Optional



Product Size



BL-1000W-1400W-A

LED Balloon Light

NEW

Specifications

	Model	1000W		1200W		1400W	
		Power	1000W	1200W	1400W	Power	1000W
Lamp	Voltage	AC100-240V					
	Frequency	50/60Hz					
	PF	≥0.95					
	LED Driver	Instantaneous					
	LED Chips	18000lm / 18000lm / 22400lm					
	Lumen	18000lm					
	CRI	≥90					
	Beam Angle	120°					
Tripod	Material	Aluminum					
	Max Height	1.8m					
	Weight	1.5kg					
	Max Load	10kg					
	Max Wind	15km/h					



Power	Radius (m)	Area (m²)	Full power (s)	Half power (s)
1000W	1	3.14	200	400
1200W	1	3.14	167	333
1400W	1	3.14	143	286

LED BALLOON LIGHT

Patent Design

1000W-1400W

Product Features



Package Included



Optional



Product Size



1000W/1200W/1400W

COMPANY HONORS



Shenzhen Yongxinru Lighting Technology Co., Ltd.
Certified by ISO9001, ISO14001, CCC, CE, ROHS, FCC, etc.

LED Balloon Light | LED Street Light | LED Flood Light | LED High Bay Light | LED Wall Light

Email: sales@yongxinru.com Web: www.yongxinru.com Tel: 86-755-23306636

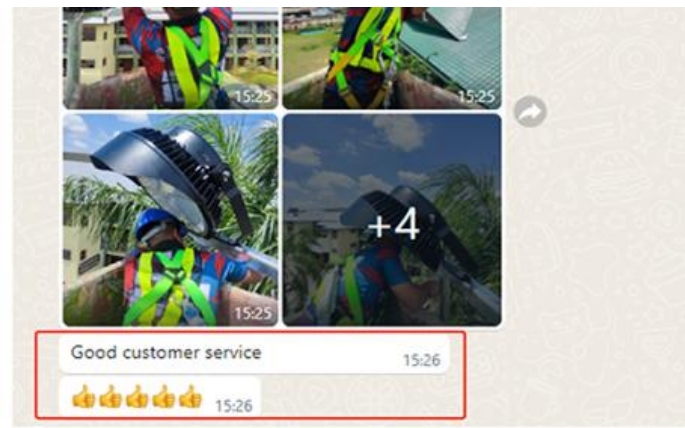
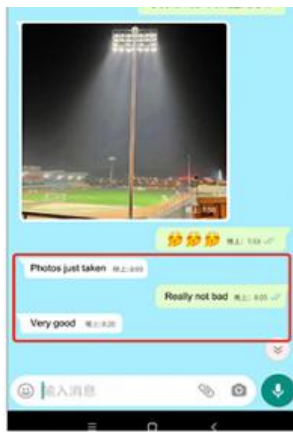
Add: 3F, 88 Bldg, Xiangsheng Industrial Park, No. 35, Hanyu Rd, Futian St, Bao'an Dist, Shenzhen, China

Balloon lighting manufacturer

2011
Since



LED Balloon Light
Professional Manufacturer



Free lighting consultation, Lighting and circuitry design; DIALux calculation and visualization auto CAD layout.

Combined with your on-site project needs, we will wholeheartedly provide you with professional and detailed light distribution advice and light simulation solutions.

That's great

Your service is great

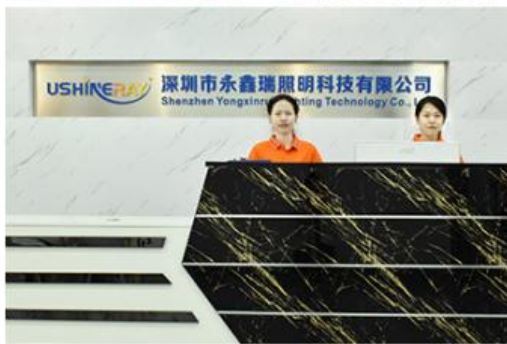
God will do it

I am satisfied with the sample received this time. We will cooperate for a long time.



Company Profile

OUR FACTORY



PRODUCTION SITE





Guangzhou International Lighting Exhibition





FAQ

Q1. Are you a manufacturer ?

Yes, we have our own factory with over 10 years R&D and manufacture experience base on ISO quality management since 2011.

Q2. Do you have any MOQ limit for led light order?

No MOQ, 1pc for sample checking is available.

Q3. Can I get a lower price for large quantity order?

Yes, please check with our sales staff for the details.

Q4. How about the lead time of ordering?

Our standard lead time for sample is 3-5 days, and normal order lead time is 7-10 days. For the large order lead time, please also check with our sales team.

Q5. Can you provide OEM and ODM service?

we can provide OEM and ODM product, with customized label design on the product and carton box. Or customized carton box, and laser print logo on the lamp fixture.

Q6. What is the payment terms of your formal order?

We accept payment via TT, Paypal, Western Union, and we offer EXW terms.

Q7. How to deal with the defective?

All of our product are produced in strict quality control system, the defective rate is less than 0.2% according to our shipment records. We offer 3- 5 years warranty for this product, if there is any defective during the warranty, please provide the picture or video for the working situation of the defective lights, we will ship the new lights to you within a few days or send it together with your next order.

USHINERAY Shenzhen Yongxinrui Lighting Technology Co., Ltd.



+8613410523891



joy@ushineray.com



ushineraylight.com

4F, Building C, Junxing Optoelectronic Industrial Park, Fuyuan 2nd Road, FuHai Street, Bao'an District, Shenzhen