

800W Stainless Steel Tripod Rental LED Portable Light Tower for Construction Lighting

Our Product Introduction

for more products please visit us on ushineraylight.com

Basic Information

- Place of Origin: Guangdong, China
- Brand Name: UShineray
- Model Number: YXR-BL-800W-A
- Minimum Order Quantity: 1pcs
- Payment Terms: T/T, Paypal, Western Union



Product Specification

- Color Temperature(CCT): 5000K
- IP Rating: IP65
- Beam Angle(°): 360°
- CRI (Ra>): 80
- Input Voltage(V): AC90-305V
- Lamp Luminous Efficiency(lm/w): 160
- Lamp Luminous Flux(lm): 128000
- Warranty(Year): 5-Year
- Working Lifetime(Hour): 50000
- Color Rendering Index(Ra): 80
- Emitting Color: White
- Power Supply: AC
- Light Source: LED
- Support Dimmer: NO



More Images



Product Description

Product Description



Features: 1. Color temperature adjustable, Dimmable($\leq 320W$); 2. Foldable tripod and cover; Lightweight; Portable; Easy quick setup; 3. Glare-free; Diffused light; 360° illumination; Dimmable; On-off button switch; 4. High Efficiency $\geq 160lm/W$; Low power consumption; 5. Weather resistance; Life span $> 50,000hrs$; Low maintenance. 6. Balloon material: Waterproof, translucent, anti-UV, flame-retardant outdoor gauze. 7. Filtration device: Dust absorption

Specification

Model E	500W-A	600W-A	700W-A	800W-A	1000W-A	1200W-A	1400W-A
YXR-BL-							
Power	500W	600W	700W	800W	1000W	1200W	1400W
Lumen(L M)	80000	96000	112000	128000	165000	192000	213000
Weight(kg)	17.5	18.1	18.5	18.8	20	21	22
Inflated Dimensio n	D70*H60		D90*H60			D110*H85	
Efficacy				160LM/W			
CCT				5000K			
CRI				$\geq 70Ra$			
LED Chips				Lumileds 2835			
LED Driver				Iventronics			
PF				≥ 0.95			

Input Voltage	AC90-305V	
Life Span	50000 hrs	
IP	IP65	
	Tripod	
Height(min-max)	Collapsed Height	Net Weight
1620-3800mm	1.8m	11.5kg

Details Images



- ◆ Color temperature adjustable, Dimmable(≤320W).
- ◆ Foldable tripod and cover; Lightweight; Portable; Easy quick setup.
- ◆ Glare-free; Diffused light; 360° illumination; Dimmable; On-off button switch.
- ◆ High Efficiency ≥160lm/W; Low power consumption.
- ◆ Weather resistance; Life span > 50,000hrs; Low maintenance.
- ◆ Balloon material: Waterproof, translucent, anti-UV, flame-retardant.
- ◆ Filtration device: Dust absorption.



BL-60W-120W-A LED Balloon Light

NEW

Specifications

Lamp	Model		60W		120W	
	Power		60W / 100W / 120W			
Lamp	Voltage		AC90-277V			
	Frequency		50/60Hz			
	PF		≥0.95			
	LED Driver		Lumileds 2835			
	LED Chips		USNemip			
	Lumen		3600lm / 6000lm / 10000lm			
	CRI		≥90Ra			
	CCT		3000K-6500K(Adjustable)			
	Infrared Dimension		400/300mm			
	Lamp Weight		4.5kg / 5.5kg / 6.5kg			
Stand	Height (mm)		1275-1900mm			
	Collapsed Height		1.5m			
	Net Weight		6.3kg			



LED BALLOON LIGHT

Patent Design 60W-120W

Product Features



Package Included



Product Size



60W/100W/120W

BL-150W-320W-A LED Balloon Light

NEW

Specifications

Lamp	Model		150W		200W		320W	
	Power		150W / 200W / 320W					
Lamp	Voltage		AC90-277V					
	Frequency		50/60Hz					
	PF		≥0.95					
	LED Driver		USNemip					
	LED Chips		Lumileds 2835					
	Lumen		24000lm / 32000lm / 51200lm					
	CRI		≥90Ra					
	CCT		3000K-6500K(Adjustable)					
	Infrared Dimension		800mm/400mm					
	Lamp Weight		8.5kg / 9.5kg / 11.5kg					
Stand	Height (mm)		1275-1900mm					
	Collapsed Height		1.5m					
	Net Weight		6.3kg					



LED BALLOON LIGHT

Patent Design 150W-320W

Product Features



Package Included



Product Size



150W/200W/320W

BL-500W-A LED Balloon Light

NEW

Specifications

	Item	TM-500W-A			
		1	2	3	4
Lamp	Power	500W			
	Voltage	AC90-300V			
	Frequency	50/60Hz			
	PF	≥0.95			
	LED Driver	Invertorless			
	LED Chips	Lumileds 2835			
	Lumen	8000lm			
	CRI	≥90Ra			
	GCCT	5000K			
	Infused Dimension	700mm/1000mm			
Tripod	Lamp Weight	17.5kg			
	Height (max)	1620-3000mm			
	Collapsed height	1.5m			
	Net Weight	11.5kg			



LED BALLOON LIGHT

Patent Design

500W

Product Features



Package Included



Optional



Product Size



BL-600W-800W-A LED Balloon Light

NEW

Specifications

	Item	TM-600W-800W-A			
		1	2	3	4
Lamp	Power	600W / 700W / 800W			
	Voltage	AC90-300V			
	Frequency	50/60Hz			
	PF	≥0.95			
	LED Driver	Invertorless			
	LED Chips	Lumileds 2835			
	Lumen	9600lm / 11200lm / 12800lm			
	CRI	≥90Ra			
	GCCT	5000K			
	Infused Dimension	800/900mm			
Tripod	Lamp Weight	18.5kg / 18.5kg / 18.5kg			
	Height (max)	1620-3000mm			
	Collapsed height	1.5m			
	Net Weight	11.5kg			



LED BALLOON LIGHT

Patent Design

600W-800W

Product Features



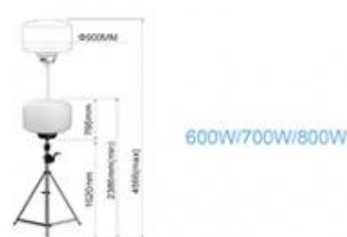
Package Included



Optional



Product Size



BL-1000W-1400W-A

LED Balloon Light

NEW

Specifications

		MODEL A			
		Power	1000W	1200W	1400W
Lamp	Voltage	AC100-240V			
	Frequency	50/60Hz			
	PF	≥0.95			
	LED Driver	Instantaneous			
	LED Chips	18000lm / 18000lm / 22400lm			
	Lumen	Lumens 2800			
	CR	70%			
	DOT	800K			
Tripod	Inflated Dimension	1100*800mm			
	Lamp Weight	3kg / 7kg / 8kg			
	Height (mm)	1600-1800mm			
	Collapsed Height	1.5m			
	Net Weight	11.5KG			



Power	Radius (m)	Area (m²)	Beam Angle			
			15°	30°	45°	60°
1000W	Radius (m)	Area (m²)	1	4	9	16
	Full power (s)	Full power (s)	240	118	54	25
1200W	Radius (m)	Area (m²)	1	4	9	16
	Full power (s)	Full power (s)	334	143	69	31
1400W	Radius (m)	Area (m²)	1	4	9	16
	Full power (s)	Full power (s)	432	171	84	38

LED BALLOON LIGHT

Patent Design

1000W-1400W

Product Features



Package Included



Orange Diffuser



Tripod Adapter



Tripod Case for Light Fixture

Optional



All White Diffuser



Blue Diffuser



Black Diffuser



Tripod



Remote

Product Size



1000W/1200W/1400W

COMPANY HONORS



Shenzhen Yongxinru Lighting Technology Co., Ltd.
Certified by ISO9001, ISO14001, CCC, CCC, CE, ROHS, FCC, etc.

LED Balloon Light | LED Street Light | LED Flood Light | LED High Bay Light | LED Wall Light

Email: sales@yongxinru.com Web: www.yongxinru.com Tel: 86 755 23366636

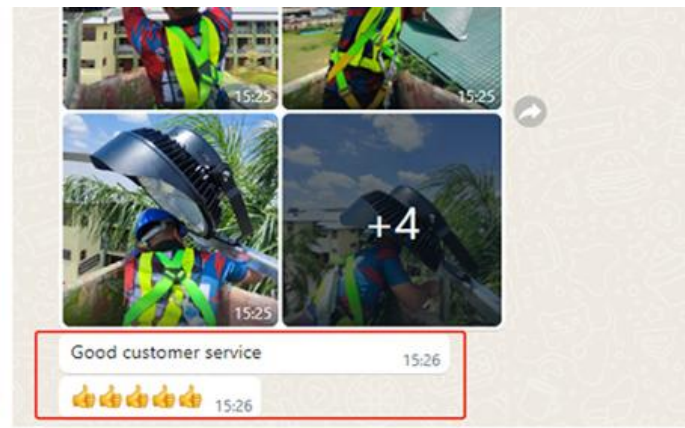
Add: 3F, 88 Bldg, Xiangsheng Industrial Park, No. 35, Hanyu Rd, Futian St, Bao'an Dist, Shenzhen, China

Balloon lighting manufacturer

2011
Since



LED Balloon Light
Professional Manufacturer



Free lighting consultation, Lighting and circuitry design; DIALux calculation and visualization auto CAD layout.
Combined with your on-site project needs, we will wholeheartedly provide you with professional and detailed light distribution advice and light simulation solutions.

That's great

Your service is great

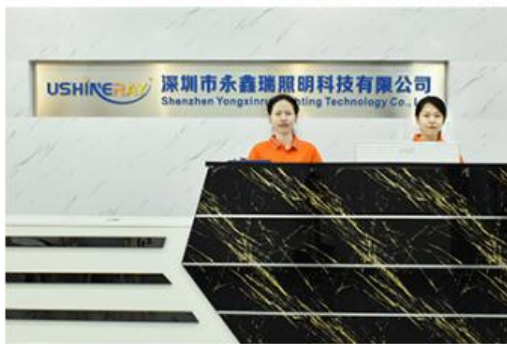
God will do it

I am satisfied with the sample received this time. We will cooperate for a long time.



Company Profile

OUR FACTORY



PRODUCTION SITE





Guangzhou International Lighting Exhibition





FAQ

Q1. Are you a manufacturer ?

Yes, we have our own factory with over 10 years R&D and manufacture experience base on ISO quality management since 2011.

Q2. Do you have any MOQ limit for led light order?

No MOQ, 1pc for sample checking is available.

Q3. Can I get a lower price for large quantity order?

Yes, please check with our sales staff for the details.

Q4. How about the lead time of ordering?

Our standard lead time for sample is 3-5 days, and normal order lead time is 7-10 days. For the large order lead time, please also

check with our sales team.

Q5. Can you provide OEM and ODM service?

we can provide OEM and ODM product, with customized label design on the product and carton box. Or customized carton box, and

laser print logo on the lamp fixture.

Q6. What is the payment terms of your formal order?

We accept payment via TT, Paypal, Western Union, and we offer EXW terms.

Q7. How to deal with the defective?

All of our product are produced in strict quality control system, the defective rate is less than 0.2% according to our shipment records. We offer 3- 5 years warranty for this product, if there is any defective during the warranty,

please provide the picture or video for the working situation of the defective lights, we will ship the new lights to you within a few days or send it together with your next order.

USHINERAY Shenzhen Yongxinrui Lighting Technology Co., Ltd.



+8613410523891



joy@ushineray.com



ushineraylight.com

4F, Building C, Junxing Optoelectronic Industrial Park, Fuyuan 2nd Road, FuHai Street, Bao'an District,
Shenzhen