

Good Heat Dissipation Led Arena Light 1500W Stadium Led Outdoor Arena Lights For Football Field

Our Product Introduction

for more products please visit us on ushineraylight.com

Basic Information

- Place of Origin: Shenzhen
- Brand Name: UShineray
- Certification: EMC, RoHS, ETL, CQC, CCC, CE, FCC, LVD
- Model Number: YXR-QC-1500W-A
- Minimum Order Quantity: 1pcs
- Payment Terms: T/T, Paypal, Western Union



Product Specification

- Application: Sports Stadiums
- Warranty(Year): 5-Year
- Light Source: LED
- Support Dimmer: Yes
- Lighting Solutions Service: Lighting And Circuitry Design, Onsite Metering, DIALux Evo Layout, LitePro DLX Layout, Auto CAD Layout, Agi32 Layout, Project Installation
- Working Time (hours): 50000
- Outdoor LED Ligth: 1500W LED Stadium Light
- Power: 250W/500W/750W/1000W/1250W1500W/2000W
- LED Chip: Sanan 5050/ Lumileds 5050
- LED Driver: Normal/ Moso Or Other Brands
- Highlight: **led arena light 1500w, stadium led outdoor arena lights, good heat dissipation led arena light**



More Images



Product Description

Good Heat Dissipation 1500W LED Arena Light Stadium Light for Football Field

Our 1500W LED arena light is perfect for football fields, featuring advanced heat dissipation technology. This ensures optimal performance and longevity, even under continuous use. The high output provides exceptional visibility, making it ideal for large-scale sporting events.

Product Features

Installation Versatility: Choose from a thickened bracket, reinforced base, or sturdy round tube for adaptable mounting solutions.

Effective Heat Dissipation: IP66 waterproof and UV-resistant, with an aluminum driver housing designed to efficiently manage heat.

Optimized Light Efficiency: Professional lens with high lumen chips, providing up to 150 lm/V $\pm 5\%$ light efficiency.

Adjustable Bracket: Modules support angle adjustments, with the bracket offering a range of up to 180° for precise lighting.

Enhanced Cooling System: Features thickened ribs for rapid heat dissipation, ensuring a longer operational life for the light.



Product Parameters

| | |
|---------------------|--|
| Model | YXR-QC-1500W-A |
| Power | 1500W |
| Lumens(lm) | 225000 |
| Other Power Options | 250W/500W/750W/1000W/1250W/2000W |
| Weight(kg) | 43 |
| Sizes(mm) | 696*828*311 |
| Efficacy | 150lm/W |
| CCT | 2700-6500K |
| CRI | ≥ 70 Ra |
| LED Chips | San'an 3030/Lumileds 3030/San'an 5050/Lumileds 5050 |
| PF | >0.95 |
| Input Voltage | AC100-277V(Moso) |
| Beam Angle | 10°/25°/45°/60°/ asymmetrical 80°155°(5050) 60°/ asymmetrical 80°155°(3030) |
| Work Temp | -35~55°C |
| Humidity | 15%~90% RH, no condensing |
| Finish | Sprayed with outdoor special powder |
| Life Span | 50000hrs |
| IP Grade | IP66 |

| | |
|-------------------------|--|
| IK Grade | IK08 |
| Body material | PC lens + Aluminum housing |
| Power Wire | Rubber cable(3*1.5mm ²) L=0.3m |
| Electronic safety grade | Class I |

Product Details



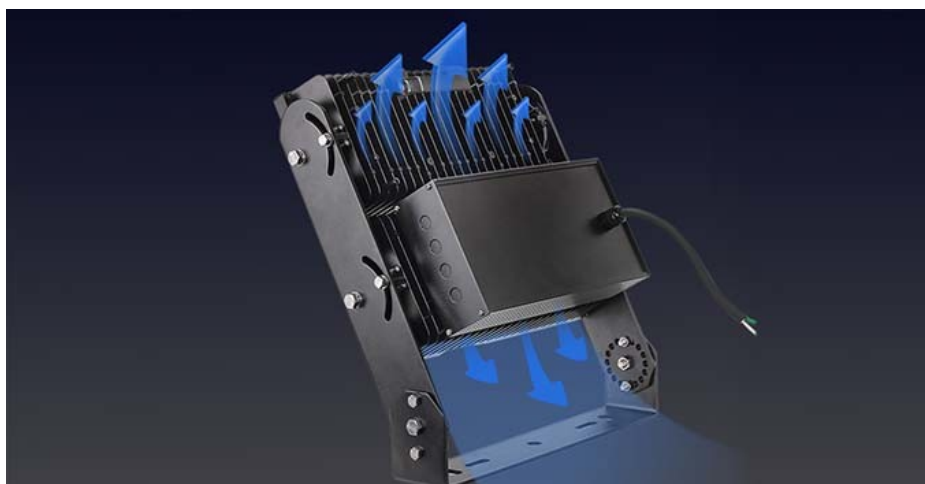
Rotary adjustable bracket

Single module supports adjustable angle; bracket can be adjusted 180°.



High lumen chip

Professional stadium light distribution lens. with high lumen chips to maximum the output, the whole lamp light efficiency is up to 150lm±5%.



Thickened aluminum die-casting shell for faster heat dissipation

Thickened heat dissipation ribs, fast heat dissipation, and ensure the light source life span



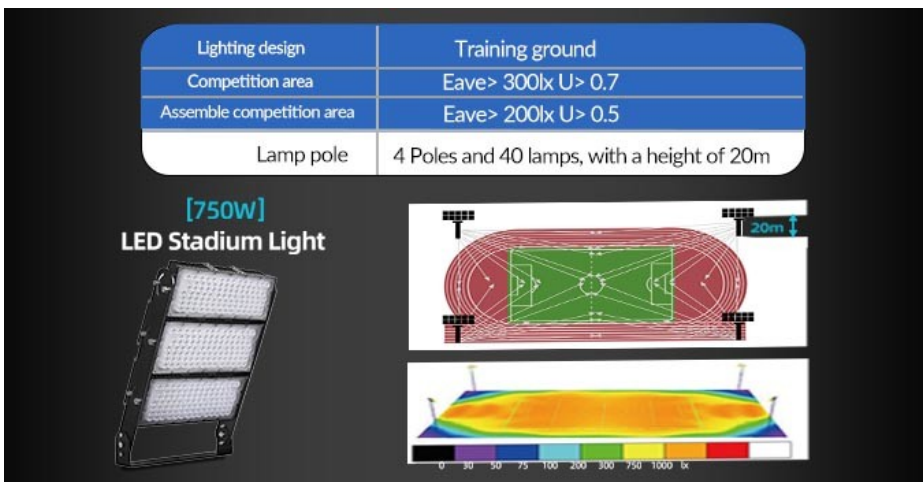
Built-in power supply

Aluminum drive house can fast conduct the heat from the driver to be out.



The whole lamp IP66 waterproof

The whole lamp IP66 waterproof and dust-proof rated.



Product Applications

Sports lighting area: football field, badminton court, basketball court, baseball field, tennis court, table tennis field, racetrack.
High pole lighting area: mining area, outdoor construction area, mobile tower lighting.

Scenario Cases

Applicable to: football field, Basketball court, golf course, natatorium, exhibition hall, plaza, airport, wharf, building and other large-scale lighting places.



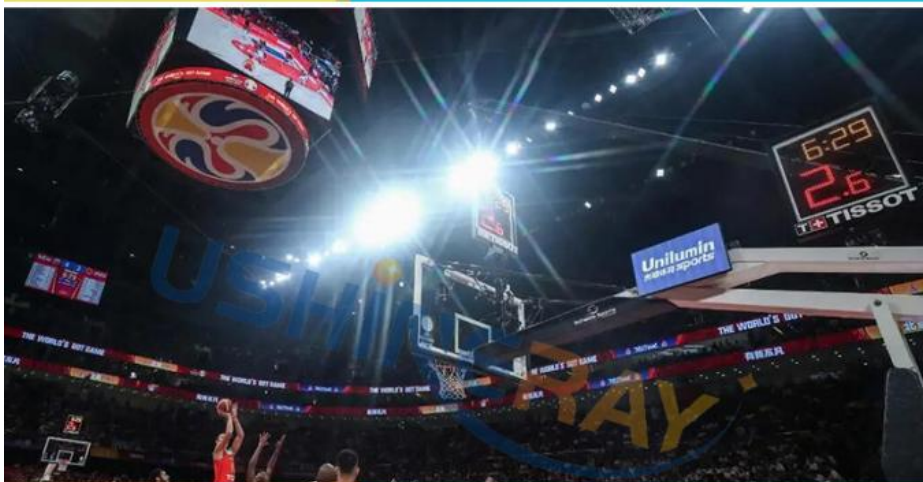
Football field lighting

High brightness and long-range illumination of football field lighting.



High pole lighting

Square lighting with high brightness, energy saving and electricity saving.



Basketball lighting

Low glare and no stroboscopic in basketball court lighting.

Our Good Service

1. Your inquiry related to our products or price will be replied within 24 hours
2. All your inquiries will be well explained by our experienced staff
3. OEM&ODM, also provide customized service
4. Distributorship is available for your unique design and some of our current models
5. We will keep secret for customer sale area, design ideas and all other private information
6. We will do our best to meet your demand.



+8613410523891



joy@ushineray.com



ushineraylight.com

4F, Building C, Junxing Optoelectronic Industrial Park, Fuyuan 2nd Road, FuHai Street, Bao'an District,
Shenzhen