

## 100W UShineray Portable Balloon Lights Mobile Light Tower for Outdoor and Indoor Advertising

Our Product Introduction

for more products please visit us on [ushineraylight.com](http://ushineraylight.com)

### Basic Information

- Place of Origin: Guangdong, China
- Brand Name: UShineray
- Model Number: YXR-BL-100W-A
- Minimum Order Quantity: 1pcs
- Payment Terms: T/T, Paypal, Western Union

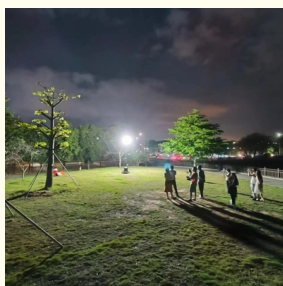


### Product Specification

- Color Temperature(CCT): 3000-6000K
- IP Rating: IP65
- Beam Angle(°): 360°
- CRI (Ra>): 80
- Input Voltage(V): AC 100-277V
- Lamp Luminous Efficiency(lm/w): 160
- Lamp Luminous Flux(lm): 16000
- Warranty(Year): 5-Year
- Working Lifetime(Hour): 50000
- Color Rendering Index(Ra): 80
- Emitting Color: White
- Power Supply: AC
- Light Source: LED
- Support Dimmer: Yes



### More Images



## Product Description

### Product Description



#### Features:

1. Original design function: Filtration device - Dust absorption;
2. Wide area coverage with 360° illumination;
3. Glare-free, diffused lighting; Lightweight and portable;
4. High Efficiency  $\geq 160\text{lm/W}$ ; Low power consumption;
5. Water-resistant LED balloon light rated to IP65 standard;
6. Dimmable ( $\leq 320\text{W}$ ); On-off button switch;
7. Foldable tripod and cover, easy quick setup;
8. Weather resistant design including a waterproof, UV resistant and fire retardant balloon; Life span  $> 50,000\text{hrs}$ ;
9. Balloon material: Waterproof, translucent, anti-UV, flame-retardant outdoor gauze.

### Specification

Model No.	YXR-BL	60W-A	100W-A	120W-A	150W-A	200W-A	320W-A
Power		60W	100W	120W	150W	200W	320W
Lumen (lm)		9600	16000	19200	24000	32000	51200
Lamp Weight (kg)		4.5	5.0	5.2	8.5	8.8	9.2
Inflated Dimension			D40*H30			D60*H40	
Light Efficiency				160lm/W			
LED Chips				Lumileds 2835			
Voltage				AC 100-277V			
CRI				≥70Ra			
CCT				3000K~6000K (Adjustable)			
IP Grade				IP65			
Work Temp				-20~60℃			
				Tripod			
		Height(min-max)		Collapsed Height		Net Weight	
		1070-1900mm		1.05m		6.3kg	



- ◆ Color temperature adjustable, Dimmable(≤320W).
- ◆ Foldable tripod and cover; Lightweight; Portable; Easy quick setup.
- ◆ Glare-free; Diffused light; 360° illumination; Dimmable; On-off button switch.
- ◆ High Efficiency ≥160lm/W; Low power consumption.
- ◆ Weather resistance; Life span > 50,000hrs; Low maintenance.
- ◆ Balloon material: Waterproof, translucent, anti-UV, flame-retardant.
- ◆ Filtration device: Dust absorption.



**LED Balloon Light**  
500W~1400W



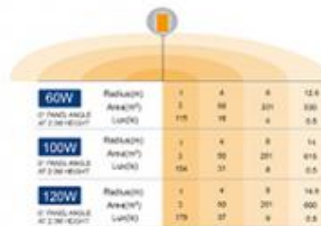
**LED Balloon Light**  
60W~320W

## BL-60W-120W-A LED Balloon Light

NEW

### Specifications

Lamp	Model		60W-120W-A	
	Power	60W / 100W / 120W		
	Voltage	AC90-277V		
	Frequency	50/60Hz		
	PF	>0.95		
	LED Driver	Lumileds 2835		
	LED Chips	USNemip		
	Lumen	3000lm / 4000lm / 4500lm		
	CRI	70Ra		
	CCT	3000K-4000K(Adjustable)		
	Infused Dimensions	400x300mm		
	Lamp Height	4.5kg 5.5kg 6.5kg		
	Height (mm)	1275-1900mm		
	Collapsed Height	1.5m		
	Net Weight	6.3kg		



## LED BALLOON LIGHT

Patent Design 60W-120W

### Product Features



### Package Included



### Product Size



60W/100W/120W

## BL-150W-320W-A LED Balloon Light

NEW

### Specifications

Lamp	Model		150W-320W-A	
	Power	150W / 200W / 320W		
	Voltage	AC90-277V		
	Frequency	50/60Hz		
	PF	>0.95		
	LED Driver	USNemip		
	LED Chips	Lumileds 2835		
	Lumen	24000lm / 30000lm / 51000lm		
	CRI	70Ra		
	CCT	3000K-4000K(Adjustable)		
	Infused Dimensions	800mmx400mm		
	Lamp Height	8.5kg 9.5kg 10.5kg		
	Height (mm)	1275-1900mm		
	Collapsed Height	1.5m		
	Net Weight	6.3kg		



## LED BALLOON LIGHT

Patent Design 150W-320W

### Product Features



### Package Included



### Product Size



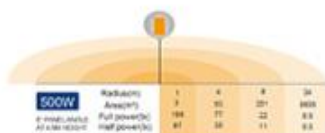
150W/200W/320W

## BL-500W-A LED Balloon Light

NEW

### Specifications

	Item	TM-500W-A			
		Power	500W		
Lamp	Voltage	AC90-300V			
	Frequency	50/60Hz			
	PF	>0.95			
	LED Driver	Switchmode			
	LED Chips	Lumileds 2835			
	Lumen	8000lm			
	CRI	90Ra			
	CCT	5000K			
Tripod	Infused Dimension	750mm/1000mm			
	Lamp Weight	17.5kg			
	Height (pre-max)	1620-3000mm			
	Collapsed height	1.5m			
	Net Weight	11.5kg			



## LED BALLOON LIGHT

Patent Design

500W

### Product Features



### Package Included



### Optional



### Product Size

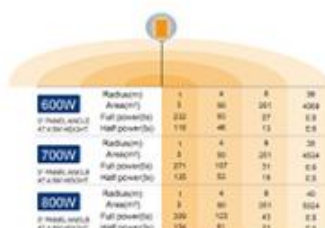


## BL-600W-800W-A LED Balloon Light

NEW

### Specifications

	Item	TM-600W-800W-A			
		Power	600W / 700W / 800W		
Lamp	Voltage	AC90-300V			
	Frequency	50/60Hz			
	PF	>0.95			
	LED Driver	Switchmode			
	LED Chips	Lumileds 2835			
	Lumen	9600lm / 11200lm / 12800lm			
	CRI	90Ra			
	CCT	5000K			
Tripod	Infused Dimension	800/920mm			
	Lamp Weight	18.5kg / 18.5kg / 18.5kg			
	Height (pre-max)	1620-3000mm			
	Collapsed height	1.5m			
	Net Weight	11.5kg			



## LED BALLOON LIGHT

Patent Design

600W-800W

### Product Features



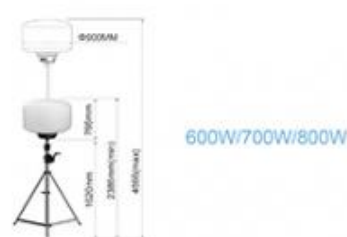
### Package Included



### Optional



### Product Size







## BL-1000W-1400W-A NEW LED Balloon Light

### Specifications

Lamp	Model	1000W-1400W	
		Power	1000W / 1200W / 1400W
Lamp	Voltage	AC100-240V	
	Frequency	50/60Hz	
	PF	≥0.95	
	LED Driver	Instantaneous	
	LED Chips	18000lm / 18000lm / 22400lm	
	Lumen	Lumens 2800	
	CR	70%	
Tripod	ECT	800K	
	Infrared Emission	1100°K/1200°K	
	Lamp Weight	3kg / 3kg / 3kg	
	Height (mm)	1600-1600mm	
	Collapsed Height	1.5m	
	Net Weight	11.5KG	

1000W	Radius (m)	Area (m²)	Full power (s)	Half power (s)
1000W	1	3.14	200	118
	2	12.56	80	47
1200W	1	3.14	200	118
	2	12.56	80	47
1400W	1	3.14	200	118
	2	12.56	80	47

## LED BALLOON LIGHT

Patent Design 1000W-1400W

### Product Features



### Package Included



### Optional



### Product Size



1000W/1200W/1400W

## COMPANY HONORS



Shenzhen Yongxinru Lighting Technology Co., Ltd.  
Certified by ISO9001, ISO14001, CCC, CE, ROHS, FCC, etc.

LED Balloon Light | LED Street Light | LED Flood Light | LED High Bay Light | LED Wall Light

Email: sales@ushineray.com Web: www.ushineray.com Tel: 86 755 23306636

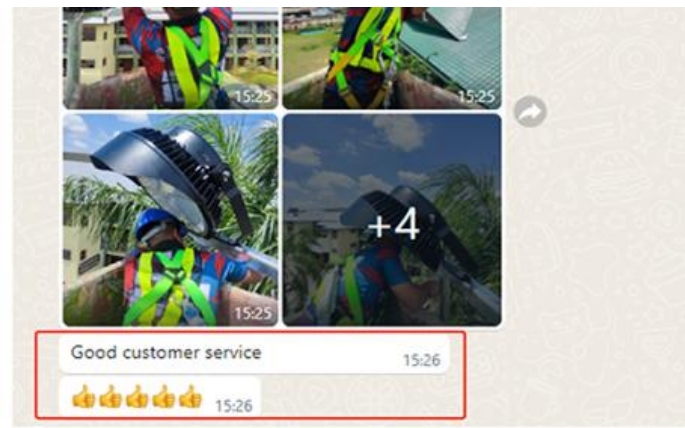
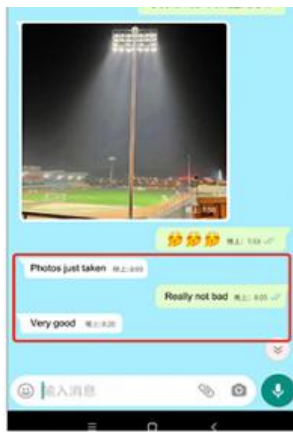
Add: 3F, 88 Bld, Xiangsheng Industrial Park, No. 35, Hanyu Rd, Futian St, Bao'an Dist, Shenzhen, China

Balloon lighting manufacturer

2011 Since



LED Balloon Light Professional Manufacturer



Free lighting consultation, Lighting and circuitry design; DIALux calculation and visualization auto CAD layout.

Combined with your on-site project needs, we will wholeheartedly provide you with professional and detailed light distribution advice and light simulation solutions.

That's great

Your service is great

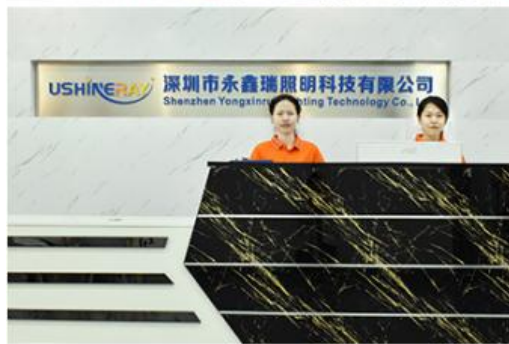
God will do it

I am satisfied with the sample received this time. We will cooperate for a long time.



## Company Profile

## OUR FACTORY





# PRODUCTION SITE





## Guangzhou International Lighting Exhibition





## FAQ

### Q1. Are you a manufacturer ?

Yes, we have our own factory with over 10 years R&D and manufacture experience base on ISO quality management since 2011.

### Q2. Do you have any MOQ limit for led light order?

No MOQ, 1pc for sample checking is available.

### Q3. Can I get a lower price for large quantity order?

Yes, please check with our sales staff for the details.

### Q4. How about the lead time of ordering?

Our standard lead time for sample is 3-5 days, and normal order lead time is 7-10 days. For the large order lead time, please also

check with our sales team.

### Q5. Can you provide OEM and ODM service?

we can provide OEM and ODM product, with customized label design on the product and carton box. Or customized carton box, and

laser print logo on the lamp fixture.

### Q6. What is the payment terms of your formal order?

We accept payment via TT, Paypal, Western Union, and we offer EXW terms.

### Q7. How to deal with the defective?

All of our product are produced in strict quality control system, the defective rate is less than 0.2% according to our shipment records. We offer 3- 5 years warranty for this product, if there is any defective during the warranty,

please provide the picture or video for the working situation of the defective lights, we will ship the new lights to you within a few days or send it together with your next order.

**USHINERAY** Shenzhen Yongxinrui Lighting Technology Co., Ltd.



+8613410523891



joy@ushineray.com



ushineraylight.com

4F, Building C, Junxing Optoelectronic Industrial Park, Fuyuan 2nd Road, FuHai Street, Bao'an District,  
Shenzhen