

320w Lighting Solutions Service Dialux Evo Layout 51200lm Tripod Light Tower For Emergency

Our Product Introduction

for more products please visit us on ushineraylight.com

Basic Information

- Place of Origin: Guangdong, China
- Brand Name: UShineray
- Model Number: YXR-BL-320W-A
- Minimum Order Quantity: 1pcs
- Payment Terms: T/T, Paypal, Western Union



Product Specification

- Color Temperature(CCT): 5000K
- IP Rating: IP65
- Beam Angle(°): 360°
- CRI (Ra>): 70
- Input Voltage(V): AC 90-305V
- Lamp Luminous Efficiency(lm/w): 160
- Lamp Luminous Flux(lm): 51200
- Warranty(Year): 5-Year
- Working Lifetime(Hour): 50000
- Working Temperature(°C): -20~60
- Color Rendering Index(Ra): 70
- Emitting Color: Cold White, Warm White, White
- Power Supply: Solar, AC, DC
- Light Source: LED

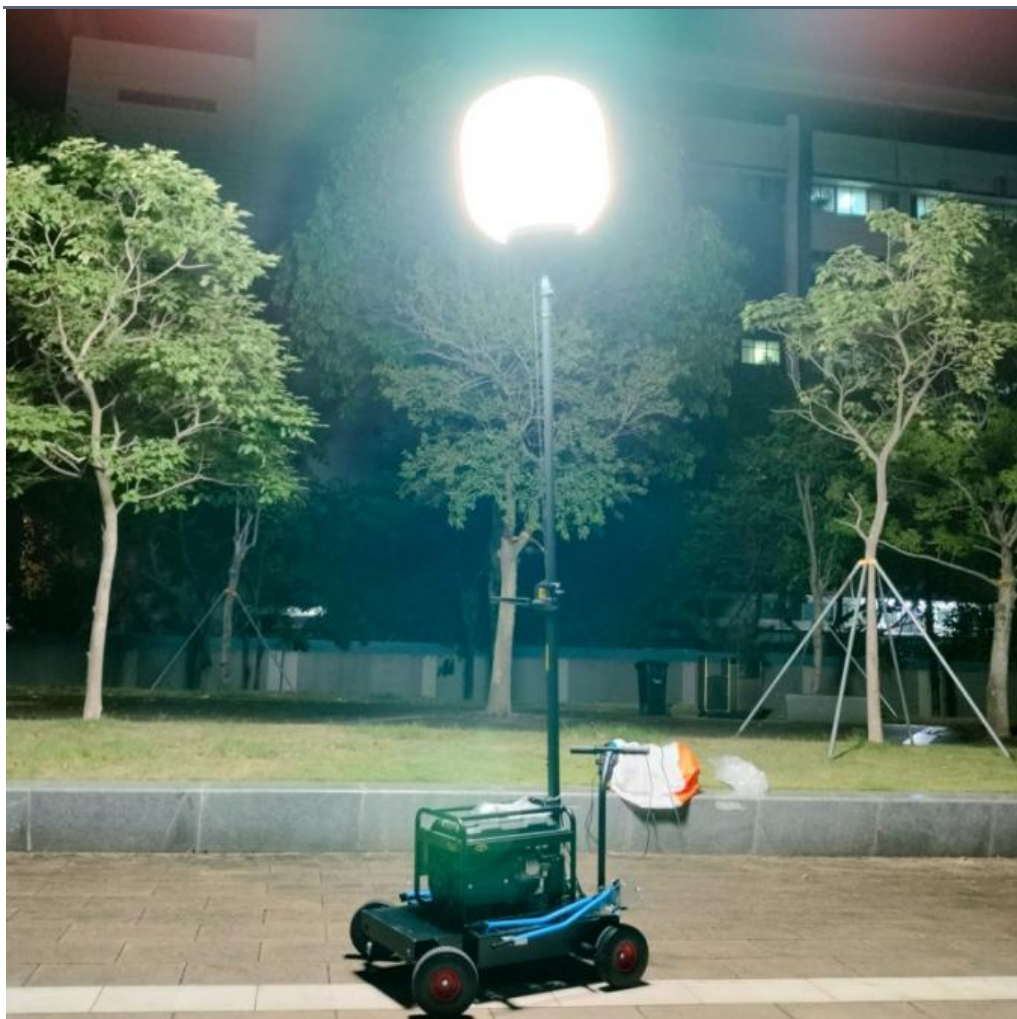


More Images



Product Description

Product Description



Features:

1. Original design function: Filtration device - Dust absorption;
2. Wide area coverage with 360° illumination;
3. Glare-free, diffused lighting; Lightweight and portable;
4. High Efficiency $\geq 160\text{lm/W}$; Low power consumption;
5. Water-resistant LED balloon light rated to IP65 standard;
6. Dimmable ($\leq 320\text{W}$); On-off button switch;
7. Foldable tripod and cover, easy quick setup;
8. Weather resistant design including a waterproof, UV resistant and fire retardant balloon; Life span $> 50,000\text{hrs}$;
9. Balloon material: Waterproof, translucent, anti-UV, flame-retardant outdoor gauze.

Specification

Model No.	YXR-BL	60W-A	100W-A	120W-A	150W-A	200W-A	320W-A
Power		60W	100W	120W	150W	200W	320W
Lumen (lm)		9600	16000	19200	24000	32000	51200
Lamp Weight (kg)		4.5	5.0	5.2	8.5	8.8	9.2
Inflated Dimension			D40*H30			D60*H40	
Light Efficiency				160lm/W			
LED Chips				Lumileds 2835			
Voltage				AC 100-277V			
CRI				$\geq 70\text{Ra}$			
CCT				3000K~6000K (Adjustable)			

IP Grade

IP65

Work Temp

-20~60℃

Tripod

Height(min-max)

Collapsed Height

Net Weight

1070-1900mm

1.05m

6.3kg

Details Images



- ◆ Color temperature adjustable, Dimmable(≤320W).
- ◆ Foldable tripod and cover; Lightweight; Portable; Easy quick setup.
- ◆ Glare-free; Diffused light; 360° illumination; Dimmable; On-off button switch.
- ◆ High Efficiency ≥160lm/W; Low power consumption.
- ◆ Weather resistance; Life span > 50,000hrs; Low maintenance.
- ◆ Balloon material: Waterproof, translucent, anti-UV, flame-retardant.
- ◆ Filtration device: Dust absorption.

USHINERAY



LED Balloon Light
500W~1400W



LED Balloon Light
60W~320W

BL-60W-120W-A LED Balloon Light

NEW

Specifications

Lamp	Model		60W-120W-A	
	Power	60W / 100W / 120W		
	Voltage	AC90-277V		
	Frequency	50/60Hz		
	PF	>0.95		
	LED Driver	Lumileds 2835		
	LED Chips	USNemip		
	Lumen	3000lm / 4000lm / 4500lm		
	CRI	70Ra		
	CCT	3000K-6500K(Adjustable)		
	Infused Dimension	400x300mm		
	Lamp Height	4.5kg 5.5kg 6.5kg		
	Height(Inch)	1215-1900mm		
	Collapsed Height	1.5m		
	Net Weight	6.3kg		

Power (W)	Radius (m)	Area (m²)	Lux (lx)
60W	1	3	175
	4	99	19
	8	391	6
	12.5	890	2.5
100W	1	3	156
	4	99	31
	8	391	8
	14	890	2.5
120W	1	3	175
	4	99	37
	8	391	9
	14.5	890	2.5

LED BALLOON LIGHT

Patent Design 60W-120W

Product Features



Package Included



Product Size



60W/100W/120W

BL-150W-320W-A LED Balloon Light

NEW

Specifications

Lamp	Model		150W-320W-A	
	Power	150W / 200W / 320W		
	Voltage	AC90-277V		
	Frequency	50/60Hz		
	PF	>0.95		
	LED Driver	USNemip		
	LED Chips	Lumileds 2835		
	Lumen	24000lm / 30000lm / 51000lm		
	CRI	70Ra		
	CCT	3000K-6500K(Adjustable)		
	Infused Dimension	800mmx400mm		
	Lamp Height	8.5kg 9.5kg 10.5kg		
	Height(Inch)	1215-1900mm		
	Collapsed Height	1.5m		
	Net Weight	6.3kg		

150W	Radius(m)	1	4	8	14.5
2° BEAM ANGLE AT 2.1M HEIGHT	Area(m²)	3	99	391	754
	Lux(lx)	219	46	10.5	2.5
200W	Radius(m)	1	4	8	16.5
2° BEAM ANGLE AT 2.1M HEIGHT	Area(m²)	3	99	391	1194
	Lux(lx)	288	59	13	2.5
320W	Radius(m)	1	4	8	20.5
2° BEAM ANGLE AT 2.1M HEIGHT	Area(m²)	3	99	391	1520
	Lux(lx)	345	69	17	2.5

LED BALLOON LIGHT

Patent Design 150W-320W

Product Features



Package Included



Product Size



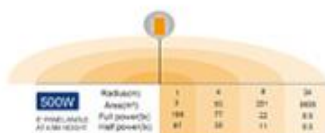
150W/200W/320W

BL-500W-A LED Balloon Light

NEW

Specifications

	Item	TM-500W-A			
		1	2	3	4
Lamp	Power	500W			
	Voltage	AC90-300V			
	Frequency	50/60Hz			
	PF	≥0.95			
	LED Driver	Invertorless			
	LED Chips	Lumileds 2835			
	Lumen	8000lm			
	CRI	≥90Ra			
	GCCT	5000K			
	Infused Dimension	700mm/1000mm			
Tripod	Lamp Weight	17.5kg			
	Height (max)	1620-3000mm			
	Collapsed height	1.5m			
	Net Weight	11.5kg			



LED BALLOON LIGHT

Patent Design

500W

Product Features



Package Included



Optional



Product Size



BL-600W-800W-A LED Balloon Light

NEW

Specifications

	Item	TM-600W-800W-A			
		1	2	3	4
Lamp	Power	600W / 700W / 800W			
	Voltage	AC90-300V			
	Frequency	50/60Hz			
	PF	≥0.95			
	LED Driver	Invertorless			
	LED Chips	Lumileds 2835			
	Lumen	9600lm / 11200lm / 12800lm			
	CRI	≥90Ra			
	GCCT	5000K			
	Infused Dimension	800/900mm			
Tripod	Lamp Weight	18.5kg / 18.5kg / 18.5kg			
	Height (max)	1620-3000mm			
	Collapsed height	1.5m			
	Net Weight	11.5kg			



LED BALLOON LIGHT

Patent Design

600W-800W

Product Features



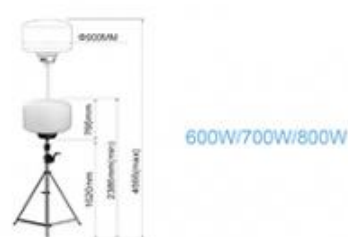
Package Included



Optional



Product Size



BL-1000W-1400W-A NEW LED Balloon Light

Specifications

Lamp	Model	1000W-1400W-A	
		Power	1000W / 1200W / 1400W
Lamp	Voltage	AC100-240V	
	Frequency	50/60Hz	
	PF	≥0.95	
	LED Driver	Instantaneous	
	LED Chips	18000lm / 18000lm / 22400lm	
	Lumen	Lumens 2800	
	CRI	70Ra	
	DOT	800K	
	Inhalation Dimension	1100*800mm	
	Lamp Weight	3kg / 3kg / 3kg	
Tripod	Height (mm)	1600-3600mm	
	Collapsed Height	1.8m	
	Net Weight	11.5KG	



1000W 1100*800mm At 1.8m height	Radius (m)	1			Area (m²)	Full power (lx)	Half power (lx)
		1	4	9			
1200W 1100*800mm At 1.8m height	Radius (m)	1	4	9	40	200	110
	Area (m²)	3	60	201	5300	34	2.0
	Full power (lx)	140	82	17	0.9	0.9	0.9
1400W 1100*800mm At 1.8m height	Radius (m)	1	4	9	50	250	140
	Area (m²)	3	60	201	7000	40	2.5
	Full power (lx)	170	71	31	0.9	0.9	0.9

LED BALLOON LIGHT

Patent Design

1000W-1400W

Product Features



Package Included



Optional



Product Size



1000W/1200W/1400W

COMPANY HONORS



Shenzhen Yongxinru Lighting Technology Co., Ltd.
Certified by ISO9001, ISO14001, CCC, CE, ROHS, FCC, etc.

LED Balloon Light | LED Street Light | LED Flood Light | LED High Bay Light | LED Wall Light

Email: sales@yongxinru.com Web: www.yongxinru.com Tel: 86 755 23306638

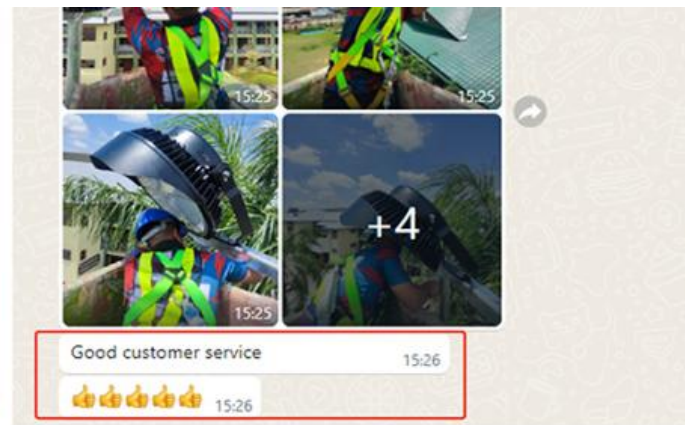
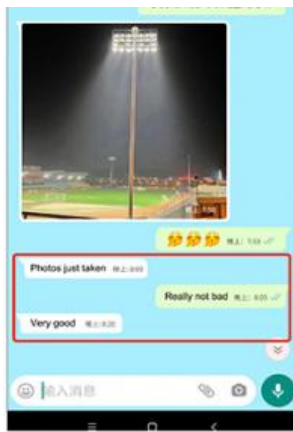
Add: 3F, 88 Bldg, Xiangsheng Industrial Park, No. 35, Hanyu Rd, Futian St, Bao'an Dist, Shenzhen, China

Balloon lighting manufacturer

2011
Since



LED Balloon Light
Professional Manufacturer



Free lighting consultation, Lighting and circuitry design; DIALux calculation and visualization auto CAD layout.
Combined with your on-site project needs, we will wholeheartedly provide you with professional and detailed light distribution advice and light simulation solutions.

That's great

Your service is great

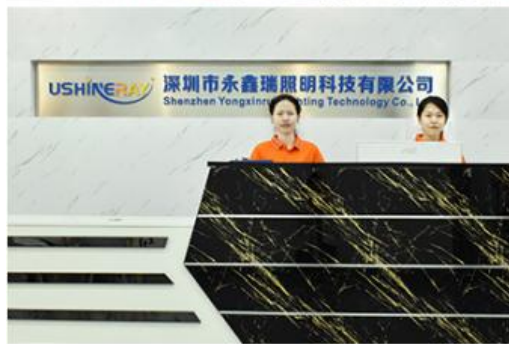
God will do it

I am satisfied with the sample received this time. We will cooperate for a long time.



Company Profile

OUR FACTORY



PRODUCTION SITE





Guangzhou International Lighting Exhibition





FAQ

Q1. Are you a manufacturer ?

Yes, we have our own factory with over 10 years R&D and manufacture experience base on ISO quality management since 2011.

Q2. Do you have any MOQ limit for led light order?

No MOQ, 1pc for sample checking is available.

Q3. Can I get a lower price for large quantity order?

Yes, please check with our sales staff for the details.

Q4. How about the lead time of ordering?

Our standard lead time for sample is 3-5 days, and normal order lead time is 7-10 days. For the large order lead time, please also

check with our sales team.

Q5. Can you provide OEM and ODM service?

we can provide OEM and ODM product, with customized label design on the product and carton box. Or customized carton box, and

laser print logo on the lamp fixture.

Q6. What is the payment terms of your formal order?

We accept payment via TT, Paypal, Western Union, and we offer EXW terms.

Q7. How to deal with the defective?

All of our product are produced in strict quality control system, the defective rate is less than 0.2% according to our shipment records. We offer 3- 5 years warranty for this product, if there is any defective during the warranty,

please provide the picture or video for the working situation of the defective lights, we will ship the new lights to you within a few days or send it together with your next order.

USHINERAY Shenzhen Yongxinrui Lighting Technology Co., Ltd.



+8613410523891



joy@ushineray.com



ushineraylight.com

4F, Building C, Junxing Optoelectronic Industrial Park, Fuyuan 2nd Road, FuHai Street, Bao'an District,
Shenzhen