

## Vibration Proof LED Stadium Lights 250Watt Flood Light For Football Ground Natatorium

Our Product Introduction

for more products please visit us on [ushineraylight.com](http://ushineraylight.com)

### Basic Information

- Place of Origin: Shenzhen
- Brand Name: UShineray
- Certification: EMC, RoHS, CQC, CCC, CE, FCC
- Model Number: YXR-QC-250W-C
- Minimum Order Quantity: 1pcs
- Payment Terms: T/T, Paypal, Western Union



### Product Specification

- Application: Sports Stadium, Airport, Square
- Warranty(Year): 5-Year
- Support Dimmer: Yes
- Lighting Solutions Service: Lighting And Circuitry Design, DIALux Evo Layout, LitePro DLX Layout, Auto CAD Layout, Agi32 Layout
- Keyword: Stadium Flood Lights
- Power: 250W, 500W, 750W, 1000W, 1250W, 1500W
- LED Chip: SMD 5050
- Beam Angle: 8°/20°/40°/60° 49°21°(asymmetrical 50°)  
49°21°(asymmetrical 65°)
- Highlight: **led stadium lights 250watt, 250watt flood light for football ground, vibration proof led stadium lights**



### More Images



## Product Description

### Vibration Proof 250W Football Ground Floodlights Stadium Light for Natatorium

Illuminate your natatorium with our vibration-proof 250W football ground floodlights. These lights are designed to withstand harsh conditions and provide consistent, bright lighting. Perfect for both indoor and outdoor aquatic environments, their robust construction ensures durability and longevity. Easy to install, these floodlights are an excellent choice for maintaining optimal visibility in any water sports facility.

#### Product Features

**Superior LED Technology:** Utilizes high brightness SMD 5050 LED chips with 150lm/W efficacy for exceptional brightness and energy efficiency.

**Efficient Thermal Management:** Features 1060 pure aluminum fins for excellent heat dissipation, ensuring prolonged LED lifespan in temperatures from -35°C to 55°C.

**Versatile Power Options:** Compatible with high-quality drivers supporting AC100V~277V or AC90-305V inputs, offering flexibility and reliability.

**Adjustable Light Angles:** Offers multiple angles (8°/20°/40°/60°) adjustable with a 180° bracket for customizable lighting solutions.

**Outdoor Durability:** IP66 rated for robust protection against dust and water, ideal for enduring outdoor conditions, with a 5-year warranty for peace of mind.

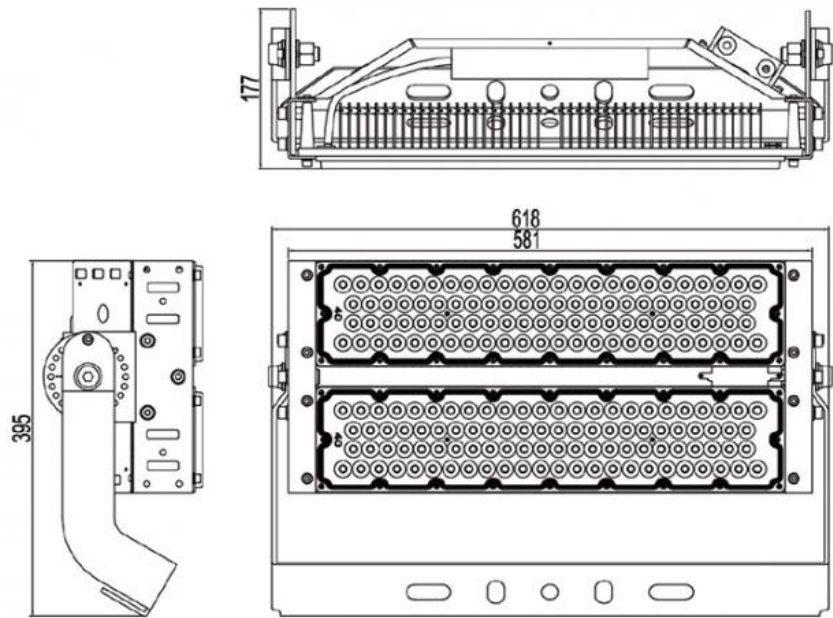


#### Product Parameters

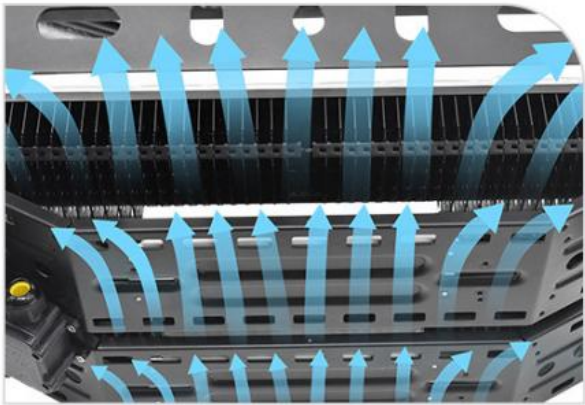
Model	YXR-QC-250W-C
Wattage	250W
Other Power Options	500W 750W 1000W 1250W 1500W
Lumen	37500±5%lm
Size(mm)	618*200*177 (One Module)
Net Weight	6.6kg
Efficacy	150lm/W ±5%
Beam Angle	8°/20°/40°/60° 49°*21°(asymmetrical 50°) 49°*21°(asymmetrical 65°)
LED	Sanan / Lumileds 5050
Color Temperature	3000K-6500K
Input Voltage	AC100-277V / AC90-305V
CRI	≥70Ra
PF	>0.97
THD	15%<THD<20%
Work Temperature	-35~55°C
Humidity	15%~90% RH, no condensing
IP Grade	IP66
IK Grade	IK08
Warranty	5 Years

Life Span	≥50,000 Hrs (LM70 @ 35°C )
Finish	Sprayed with outdoor special powder
Body Material	PC lens + Aluminum housing
Electronic Safety Grade	Class I
Wire	Rubber cable(3*1mm²) L=0.5m

**Product Sizes**



**Products Details**

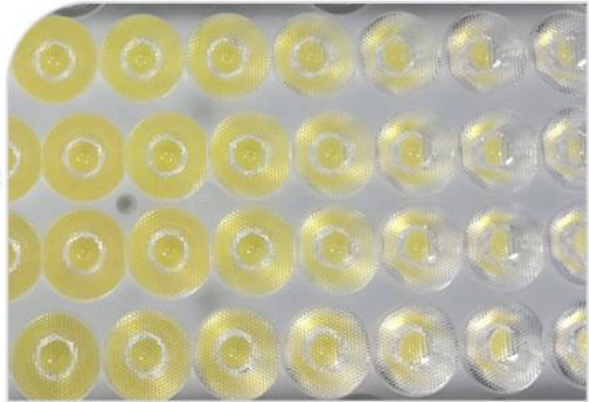


- 1
- 1060 pure aluminum fins riveting design**

Hollow out in the middle of the heat sink increasing air convection, better heat dissipation.

- 2
- Lumileds SMD5050 LED chips**

Up to 145 lm/W light efficiency, low decay.





3

### MOSO or other famous brand LED driver

High efficiency, energy saving, stable, flicker free, longer span life.

4

### Thickened steel support

Firm and stable, with the dial, 180°adjustable, easy to install.

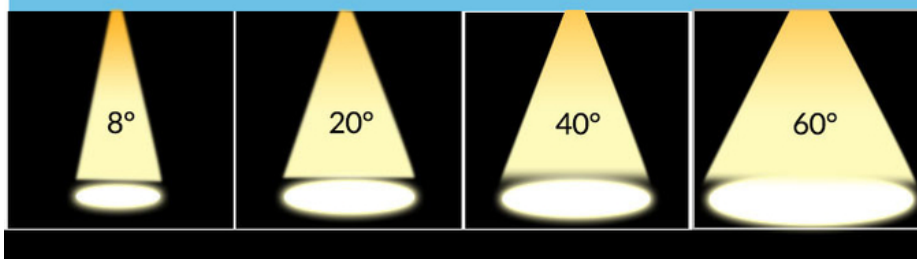


5

### Whole lamp with Ingress Protection IP66

Sprayed with outdoor special powder, anti-corrosion, no fear of outdoor harsh environment.

## Various beam angle options



Package





## Applications



## Project Cases









+8613410523891



joy@ushineray.com



ushineraylight.com

4F, Building C, Junxing Optoelectronic Industrial Park, Fuyuan 2nd Road, FuHai Street, Bao'an District,  
Shenzhen