

Long Lifespan Stadium Flood Lights 750W Outdoor Court Lighting For Pickleball Court

Our Product Introduction

for more products please visit us on ushineraylight.com

Basic Information

- Place of Origin: Shenzhen
- Brand Name: UShineray
- Certification: EMC, RoHS, CQC, CCC, CE, FCC
- Model Number: YXR-QC-750W-C
- Minimum Order Quantity: 1pcs
- Payment Terms: T/T, Paypal, Western Union



Product Specification

- Support Dimmer: Yes
- Lighting Solutions Service: Lighting And Circuitry Design, DIALux Evo Layout, LitePro DLX Layout, Auto CAD Layout, Agi32 Layout
- Working Time (hours): 50000
- LED Driver: Normal/ Moso
- LED Chip: Lumileds 5050
- IP Grade: IP66
- Beam Angle: 8°/20°/40°/60° 49°21°(asymmetrical 50°)
49°21°(asymmetrical 65°)
- Warranty: 5 Years
- Highlight: stadium flood lights 750w,
750w outdoor court lighting,
long lifespan stadium flood lights



More Images



Product Description

Long Lifespan 750W Stadium Flood Lights for Pickleball Court

Ensure your pickleball court is well-lit with our 750W stadium flood lights, known for their long lifespan. These lights deliver powerful illumination, perfect for both competitive and casual play. Their advanced design ensures minimal maintenance, reducing downtime and costs. Built to last, these flood lights will keep your court brightly lit for years to come.

Product Features

Premium LED Performance: Incorporates high brightness SMD 5050 LEDs with 150lm/W efficacy, ensuring optimal brightness and energy efficiency.

Advanced Thermal Control: Features 1060 pure aluminum fins for effective heat dissipation, ensuring extended LED lifespan under temperatures from -35°C to 55°C.

Versatile Power Options: Select from top-tier driver brands compatible with AC100V~277V or AC90-305V inputs, offering flexible and reliable power solutions.

Adjustable Lighting Angles: Provides various angles (8°/20°/40°/60°) and a 180° adjustable bracket for customizable illumination tailored to specific requirements.

Durable Outdoor Performance: Designed with an IP66 rating to withstand harsh outdoor conditions, ensuring resistance to dust, water, and extreme weather, supported by a 5-year warranty for long-term reliability.

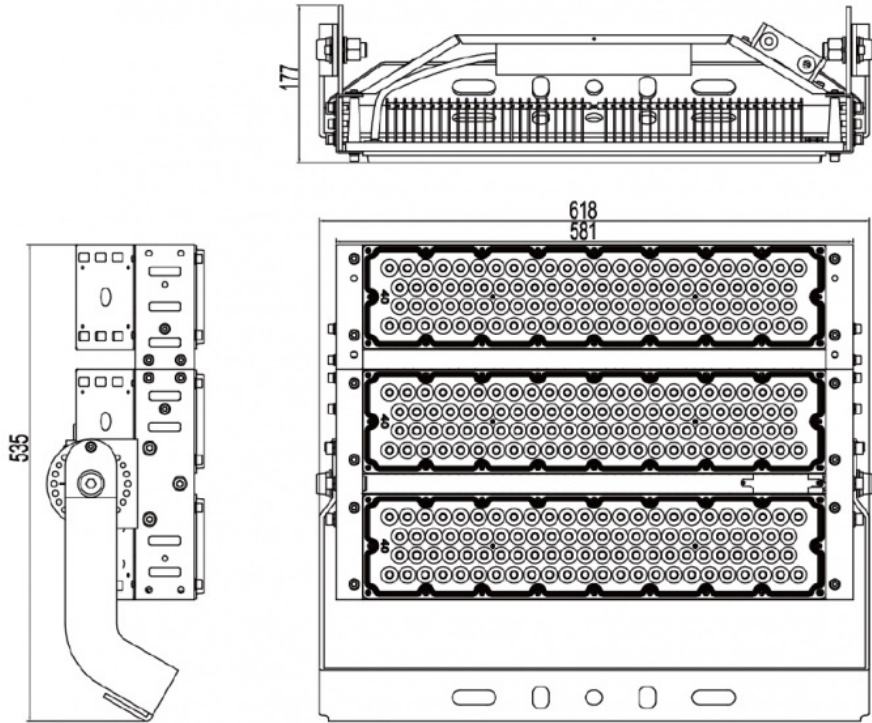


Product Parameters

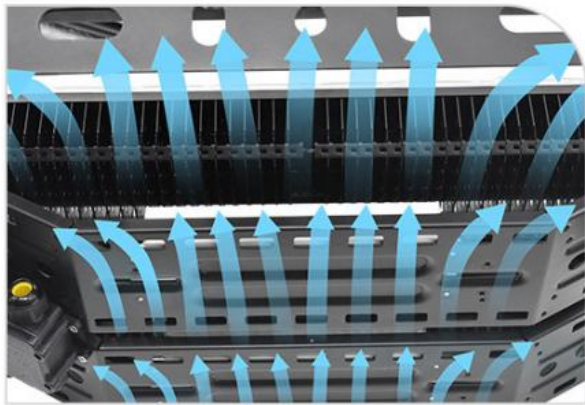
Model	YXR-QC-750W-C
Wattage	750W
Other Power Options	250W 500W 1000W 1250W 1500W
Lumen	112500±5%lm
Size(mm)	618*535*177 (Three Module)
Net Weight	18kg
Efficacy	150lm/W ±5%
Beam Angle	8°/20°/40°/60° 49°21°(asymmetrical 50°) 49°21°(asymmetrical 65°)
LED	Sanan / Lumileds 5050
Color Temperature	3000K-6500K
Input Voltage	AC100-277V / AC90-305V
CRI	≥70Ra
PF	>0.97
THD	15%<THD<20%
Work Temperature	-35~55°C
Humidity	15%~90% RH, no condensing
IP Grade	IP66
IK Grade	IK08
Warranty	5 Years

Life Span	≥50,000 Hrs (LM70 @ 35°C)
Finish	Sprayed with outdoor special powder
Body Material	PC lens + Aluminum housing
Electronic Safety Grade	Class I
Wire	Rubber cable(3*1mm²) L=0.5m

Product Sizes



Products Details



1

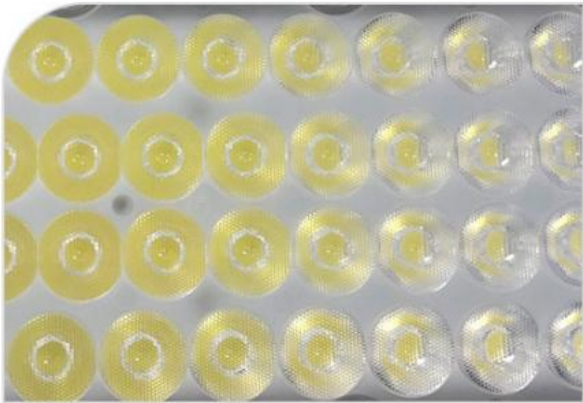
**1060 pure aluminum fins
riveting design**

Hollow out in the middle of the
heat sink increasing air
convection, better heat dissipation.

2

Lumileds SMD5050 LED chips

Up to 145 lm/W light efficiency,
low decay.





3

MOSO or other famous brand LED driver

High efficiency, energy saving, stable, flicker free, longer span life.

4

Thickened steel support

Firm and stable, with the dial, 180°adjustable, easy to install.

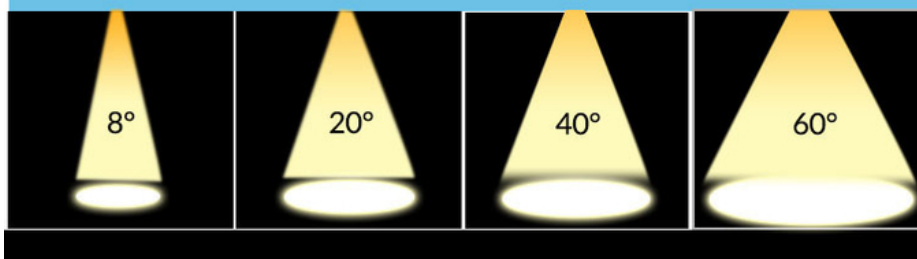


5

Whole lamp with Ingress Protection IP66

Sprayed with outdoor special powder, anti-corrosion, no fear of outdoor harsh environment.

Various beam angle options



Package



Applications



Project Cases







+8613410523891



joy@ushineray.com



ushineraylight.com

4F, Building C, Junxing Optoelectronic Industrial Park, Fuyuan 2nd Road, FuHai Street, Bao'an District,
Shenzhen