

Football Field 500w Led Stadium Light 75000lm IP66 Horse Arena Lights

Our Product Introduction

for more products please visit us on ushineraylight.com

Basic Information

- Place of Origin: Guangdong, China
- Brand Name: UShineray
- Model Number: YXR-QC-500W-C
- Minimum Order Quantity: 1pcs
- Payment Terms: T/T, Paypal, Western Union



Product Specification

- Support Dimmer: Yes
- Lighting Solutions Service: Lighting And Circuitry Design, DIALux Evo Layout, LitePro DLX Layout, Agi32 Layout, Auto CAD Layout, Onsite Metering, Project Installation
- IP Rating: IP66
- Light Source: LED
- Warranty(Year): 5-Year
- Power: 250W/500W/750W/1000W/1250W/1500W
- LED Chip: Sanan / Lumileds 5050
- LED Driver: Normal/ Moso/ Inventronics
- Beam Angle: 8°/20°/40°/60° 49°21°(asymmetrical 50°)
49°21°(asymmetrical 65°)
- Applications: Basketball Court; Football Field; Tennis Court
- Highlight: 500w led stadium light 75000lm,
football field 500w led stadium light ,



More Images



Product Description

Easy Installation 500W Football Stadium Lights for Horse Arena

Our 500W football stadium lights are ideal for horse arenas, offering straightforward installation and exceptional illumination. Designed to meet the demands of equestrian events, these lights provide bright and even lighting across large areas, enhancing safety and visibility. Their energy-efficient design ensures lower running costs while maintaining top performance, making them a smart investment for any horse arena.

Product Features

High-Efficiency Lighting: Employs advanced SMD 5050 LEDs achieving 150lm/W efficacy, ensuring superior brightness and energy savings.

Effective Heat Dissipation: Utilizes 1060 pure aluminum fins in a riveting design for optimal heat management, extending LED lifespan up to 50,000 hours.

Flexible Power Compatibility: Supports renowned driver brands for AC100V~277V or AC90-305V inputs, ensuring stable and efficient operation.

Customizable Illumination: Provides adjustable angles (8°/20°/40°/60°) and a 180° adjustable bracket for tailored lighting configurations.

Weatherproof Design: IP66 certification safeguards against environmental elements, delivering reliable performance in diverse outdoor settings, backed by a 5-year warranty.

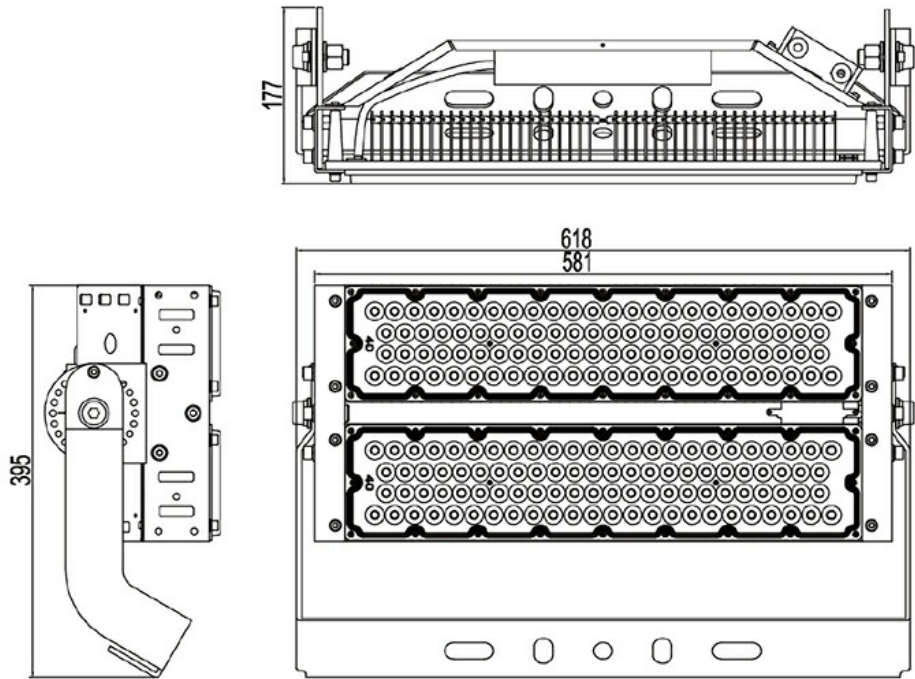


Product Parameters

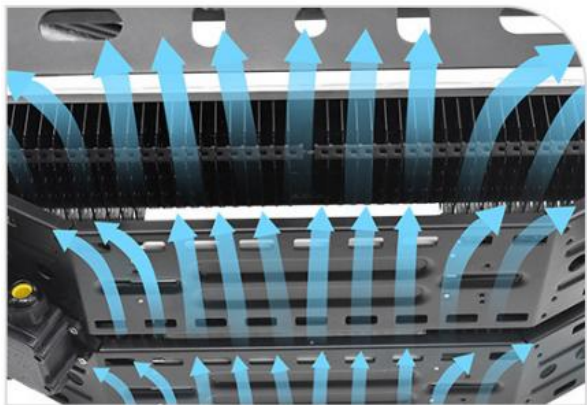
Model	YXR-QC-500W-C
Wattage	500W
Other Power Options	250W 750W 1000W 1250W 1500W
Lumen	75000±5%lm
Size(mm)	618*395*177 (Two Modules)
Net Weight	12.8kg
Efficacy	150lm/W ±5%
Beam Angle	8°/20°/40°/60° 49°21°(asymmetrical 50°) 49°21°(asymmetrical 65°)
LED	Sanan / Lumileds 5050
Color Temperature	3000K-6500K
Input Voltage	AC100-277V / AC90-305V
CRI	≥70Ra
PF	>0.97
THD	15%<THD<20%
Work Temperature	-35~55℃
Humidity	15%~90% RH, no condensing
IP Grade	IP66
IK Grade	IK08

Warranty	5 Years
Life Span	≥50,000 Hrs (LM70 @ 35°C)
Finish	Sprayed with outdoor special powder
Body Material	PC lens + Aluminum housing
Electronic Safety Grade	Class I
Wire	Rubber cable(3*1mm²) L=0.5m

Product Sizes



Products Details



1

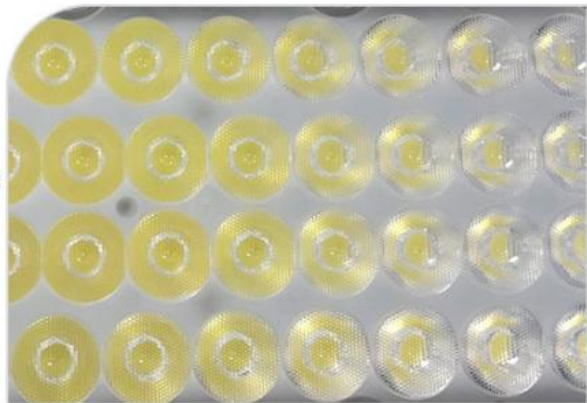
**1060 pure aluminum fins
riveting design**

Hollow out in the middle of the
heat sink increasing air
convection, better heat dissipation.

2

Lumileds SMD5050 LED chips

Up to 145 lm/W light efficiency,
low decay.





3

MOSO or other famous brand LED driver

High efficiency, energy saving, stable, flicker free, longer span life.

4

Thickened steel support

Firm and stable, with the dial, 180°adjustable, easy to install.

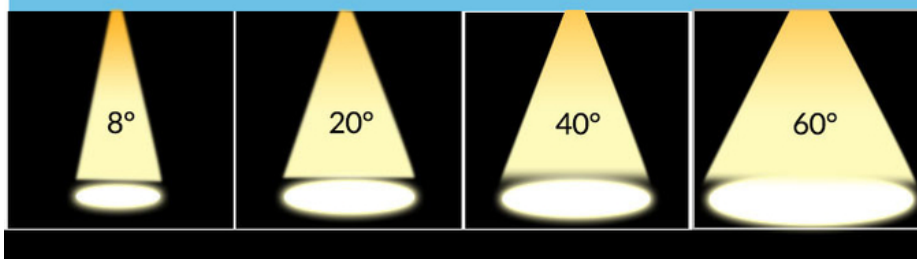


5

Whole lamp with Ingress Protection IP66

Sprayed with outdoor special powder, anti-corrosion, no fear of outdoor harsh environment.

Various beam angle options



Package



Applications



Project Cases







+8613410523891



joy@ushineray.com



ushineraylight.com

4F, Building C, Junxing Optoelectronic Industrial Park, Fuyuan 2nd Road, FuHai Street, Bao'an District,
Shenzhen