

## Rectangular 250W Led Sport Light Flood Stadium Light For Power Plant

Our Product Introduction

for more products please visit us on [ushineraylight.com](http://ushineraylight.com)

## Basic Information

- Place of Origin: Shenzhen, China
- Brand Name: UShineray
- Certification: EMC, RoHS, CE, FCC, LVD
- Model Number: YXR-QC-250W-G
- Minimum Order Quantity: 1pcs
- Payment Terms: T/T, Paypal, Western Union

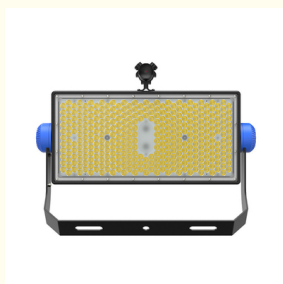


## Product Specification

- Application: Sports Stadiums Illumination
- IP Rating: IP66
- Warranty(Year): 5-Year
- Support Dimmer: Yes
- Lighting Solutions Service: Lighting And Circuitry Design, Onsite Metering, DIALux Evo Layout, LitePro DLX Layout, Auto CAD Layout, Agi32 Layout, Project Installation
- Type: Sports Field LED Stadium Light
- Power: 250W/500W/750W/1000W/1250W/1500W/20
- LED Chip: San'an/ Lumileds 3030
- LED Driver: MOSO
- Beam Angle: 15°/30°/40°/60°/90°
- Highlight: 250w led sports lights, 250w led sports lighting fixtures, stadium led sports lights



## More Images



## Product Description

Rectangular 250W led sport light Flood Stadium light for Power Plant

Our 250W floodlight is built to withstand high temperatures, making it ideal for power plant environments. These lights offer reliable, bright illumination even in extreme conditions, ensuring clear visibility for athletic events and other outdoor activities in challenging environments.

### Product Details

**Power Options:** Available in a range from 250W to 2500W, providing flexible power solutions for various lighting needs.

**Light Efficiency:** Delivers high light efficacy at 150 lm/W, ensuring bright and effective illumination.

**Adjustable Beam Angles:** Features beam angles of 15°, 30°, 45°, 60°, and 90°, with a fully adjustable 180° lamp design for optimal light direction.

**Durability Standards:** Built with IP66 ingress protection and IK08 impact resistance, ensuring resilience in harsh environments.

**Laser Sight Integration:** Comes with an integrated laser sight for precise alignment and setup.

**Optional Anti-Glare Cover:** Can be equipped with an anti-glare cover to reduce glare and enhance visual comfort.

**Lighting Simulation Support:** Includes support for IES files and Dialux simulations for accurate lighting planning and design.

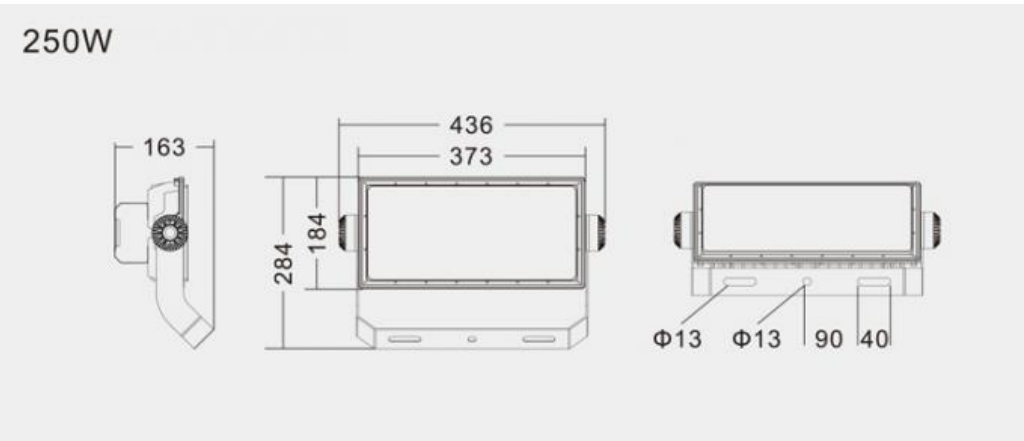


### Product Parameters

Model	YXR-QC-250W-G
Power	250W
Lumens(lm)	37500
Other Power Options	500W/750W/1000W/1250W/1500W/2000W/2500W
Weight(kg)	5.7
Sizes(mm)	436*284*163
Efficacy	150lm/W
CCT	3000-6500K
CRI	≥70Ra
LED Chips	Lumileds 3030
PF	>0.97
Input Voltage	AC100-277V(Moso)
Beam Angle	15°/30°/40°/60°/90°
Work Temp	-35~55°C
Humidity	15%~90% RH, no condensing
Finish	Sprayed with outdoor special powder
Life Span	≥50,000 Hrs (LM70 @ 35°C )
IP Grade	IP66
IK Grade	IK08
Body material	PC lens + Aluminum housing

Power Wire	Rubber cable(3*0.75mm²) L=0.3m
Electronic safety grade	Class I

Product Sizes



Product Details

**Light efficiency >140lm/W**

Luminous efficiency is more than 140lm/W, or more higher light efficacy can be customized, low decay.

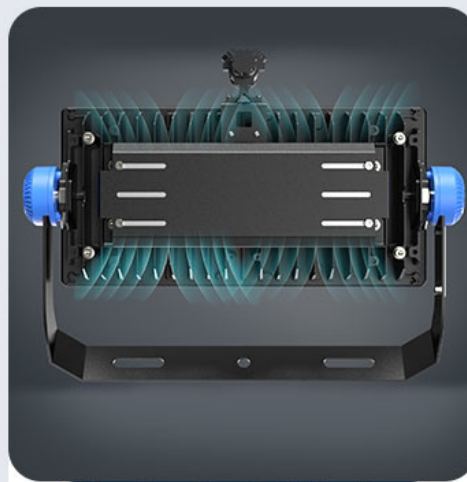
**Professional optical light distribution**

With narrow, middle, width beam angle: 15°30°45°60°90°



### The whole lamp IP66 Ingress Protection

IP67 LED Driver, lamp with silicone waterproof sealing strip, UV-resistant material, reliable without failure.



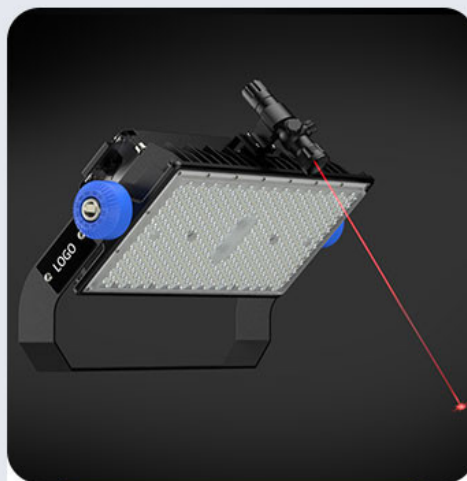
### Excellent heat dissipation performance

ADC12 die-casting aluminum heat sink, high thermal conductivity aluminum substrate, fast heat dissipation, the efficiency is up to 96W / M.K, reduce light decay.



### Brand Driver

Famous brand MOSO Driver or other brand driver is optional, good stability, high efficiency, flicker free, anti-surge.

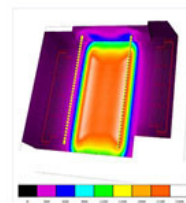
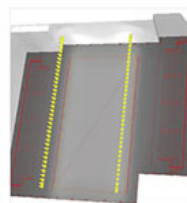


### Laser sight

Quick-installed laser sight, easily adjust the direction of illumination to achieve maximum lux and uniformity, what's more, it can minimize installation time and lower the labor cost.

### Intelligent dimming system

0~10V, PWM and DALI dimming models are available; Dialux simulation test service can be provided.



### Applications

Outdoor sports arena, Outdoor venues, Football field, Tennis court, Hockey field, Rugby pitch, Riding arena, Volleyball court, Outdoor water polo, Training pitch, Training fields, Backyard lighting, Ski resorts, Parking lot, Parking squares and other outdoor lighting places.

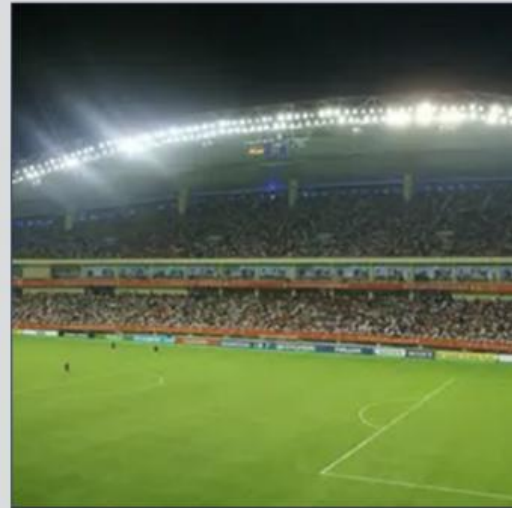


# Applications

Supply Professional Sports Stadiums Lighting Projects Solutions



High brightness, wide lighting area



High cost performance, easy installation

High Brightness LED Stadium





## Company Profiles

**12+**  
Experience

**2600m<sup>2</sup>+**  
Factory Area

**5000+**  
Daily Capacity





# PRODUCTION SITE



**USHINERAY** Shenzhen Yongxinrui Lighting Technology Co., Ltd.

+8613410523891

joy@ushineray.com

ushineraylight.com

4F, Building C, Junxing Optoelectronic Industrial Park, Fuyuan 2nd Road, FuHai Street, Bao'an District, Shenzhen