

IP67 LED Stadium Lights 1000Watt 150000lm Arena Flood Lights For Gymnasium

Our Product Introduction

for more products please visit us on ushineraylight.com

Basic Information

- Place of Origin: Guangdong, China
- Brand Name: UShineray
- Model Number: YXR-QC-1000W-A
- Minimum Order Quantity: 1pcs
- Payment Terms: T/T, Paypal, Western Union



Product Specification

- Support Dimmer: Yes
- Lighting Solutions Service: Lighting And Circuitry Design, DIALux Evo Layout, LitePro DLX Layout, Agi32 Layout, Auto CAD Layout, Onsite Metering, Project Installation
- Light Source: LED
- Warranty(Year): 5-Year
- Keyword: 250W Stadium Light
- Power Options: 250W/500W/750W/1000W/1500W/2000W
- Applications: Basketball Football Field Tennis Court
- LED Driver: Moso/Normal
- Highlight: ip67 led stadium lights,
led stadium lights 1000watt,
150000lm arena flood lights



More Images



Product Description

IP67 Durable 1000W LED Flood Light for Gymnasium

Our 1000W LED flood light is engineered for gymnasiums, delivering powerful and consistent lighting. With its durable construction and high efficiency, this flood light ensures a well-lit environment for various indoor sports and activities. It's built to endure frequent use while providing excellent visibility.

Product Features

Multiple Installation Options: Includes reinforced bracket, sturdy base, and thickened round tube methods to suit various needs.

Built-In Power Supply: IP66 waterproof and UV-resistant with an aluminum driver housing for effective heat management.

Professional Distribution Lens: Features high lumen chips and a specialized lens for up to 150 lm/V $\pm 5\%$ light efficiency.

Adjustable Angles: Each light module supports angle adjustment, with a bracket capable of rotating up to 180°.

Efficient Heat Dissipation: Designed with thick heat dissipation ribs to quickly remove heat and extend the light source's life.



Product Parameters

| | |
|---------------------|--|
| Model | YXR-QC-1000W-A |
| Power | 1000W |
| Lumens(lm) | 150000 |
| Other Power Options | 250W/500W/750W/1250W/1500W/2000W |
| Weight(kg) | 26 |
| Sizes(mm) | 855*420*155 |
| Efficacy | 150lm/W |
| CCT | 2700-6500K |
| CRI | ≥ 70 Ra |
| LED Chips | San'an 3030/Lumileds 3030/San'an 5050/Lumileds 5050 |
| PF | >0.95 |
| Input Voltage | AC100-277V(Moso) |
| Beam Angle | 10°/25°/45°/60°/ asymmetrical 80°155°(5050) 60°/ asymmetrical 80°155°(3030) |
| Work Temp | -35~55°C |

| | |
|-------------------------|-------------------------------------|
| Humidity | 15%~90% RH, no condensing |
| Finish | Sprayed with outdoor special powder |
| Life Span | 50000hrs |
| IP Grade | IP66 |
| IK Grade | IK08 |
| Body material | PC lens + Aluminum housing |
| Power Wire | Rubber cable(3*1.5mm²) L=0.3m |
| Electronic safety grade | Class I |

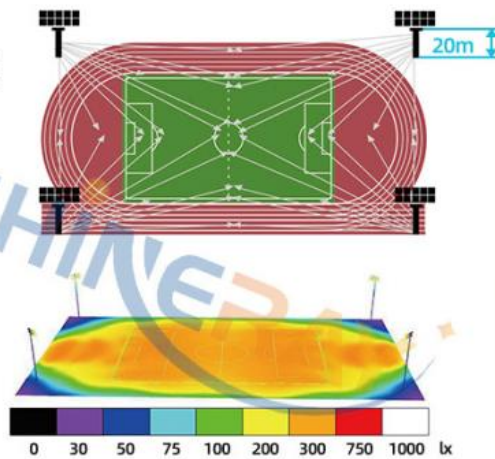
Product Details



Reference Scheme for Stadium Lighting

| | |
|---------------------------|--|
| Lighting design | Training ground |
| Competition area | Eave> 300lx U> 0.7 |
| Assemble competition area | Eave> 200lx U> 0.5 |
| Lamp pole | 4 Poles and 40 lamps, with a height of 20m |

[750W] LED Stadium Light



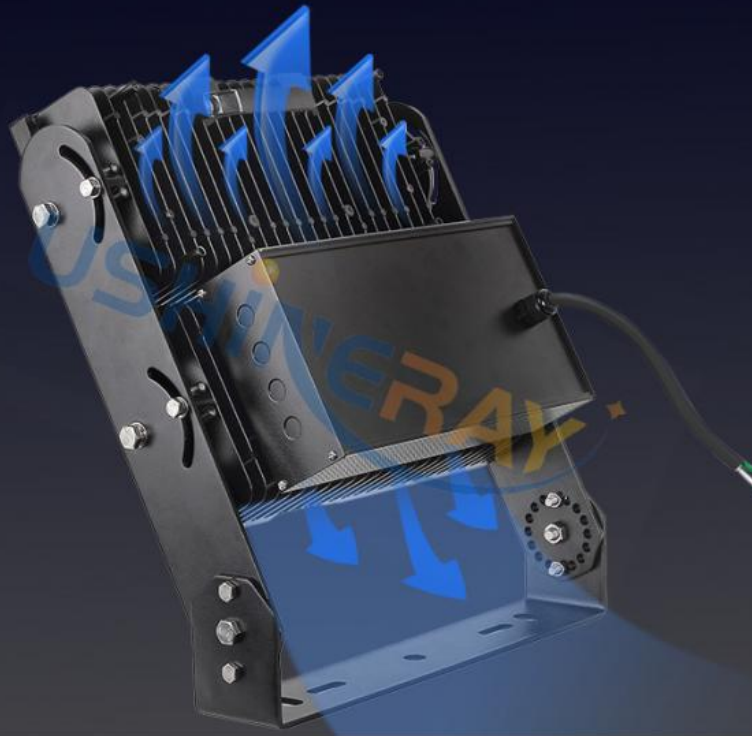
ENERGY EFFICIENCY COMPARISON



| Project | USHINERAY LED Stadium Light | Traditional lighting fixtures |
|------------------|--------------------------------|----------------------------------|
| CCT | 3000-6500K | Color temperature monotony |
| Efficacy | >160LM/W | 70LM/W |
| CRI | 70~90 | 20~30 |
| Power efficiency | > 90 | > 70 |
| Start time | No delay | 5-10 Minutes |
| Service life | 5-10 Years | 1-2 Years |

Thickened aluminum die-casting shell for faster heat dissipation

Thickened heat dissipation ribs, fast heat dissipation, and ensure the light source life span



High light efficiency

Low light decay

Lifetime up to 100000h



High light efficiency



Low light decay



Lifetime
up to 100000h





Providing LED energy-saving program; free lighting consultation

Lighting and circuitry design; DIALux calculation and visualization; Auto CAD layout. combined with your on-site project needs, we will wholeheartedly provide you with professional and detailed light distribution advice and light simulation solutions.

Product Applications

Sports lighting area: football field, badminton court, basketball court, baseball field, tennis court, table tennis field, racetrack. High pole lighting area: mining area, outdoor construction area, mobile tower lighting.

Scenario Cases

Applicable to: football field, Basketball court, golf course, natatorium, exhibition hall, plaza, airport,

wharf, building and other large-scale lighting places.



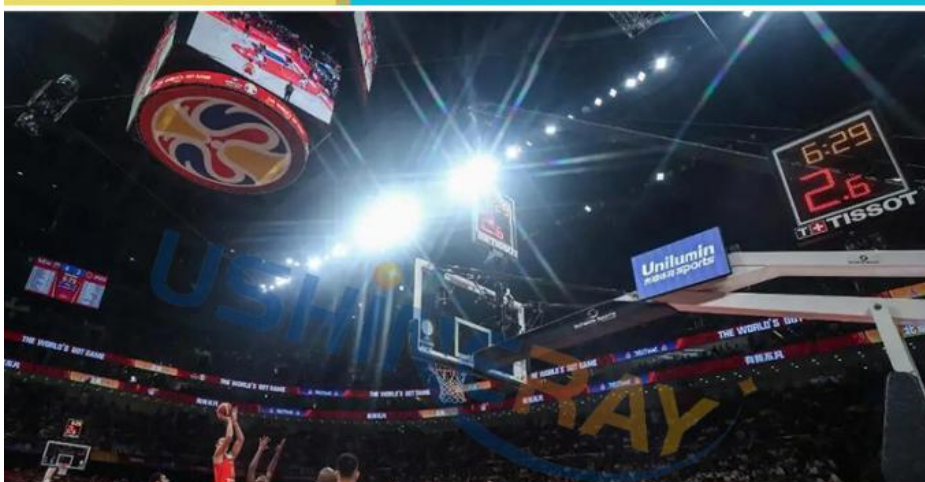
Football field lighting

High brightness and long-range illumination of football field lighting.



High pole lighting

Square lighting with high brightness, energy saving and electricity saving.



Basketball lighting

Low glare and no stroboscopic in basketball court lighting.

Our Advantages:

- 1) Factory direct prices;

- 2) Own R&D department for the drivers and whole products to ensure high quality;
- 3) Unique design;
- 4) With CE FCC ROHS certificates;
- 5) ISO9001:2008 quality control system;
- 6) Long working lifespan: 50000h & 5 years warranty;
- 7) High performance heat dissipation;

 **Shenzhen Yongxinrui Lighting Technology Co., Ltd.**



+8613410523891



joy@ushineray.com



ushineraylight.com

4F, Building C, Junxing Optoelectronic Industrial Park, Fuyuan 2nd Road, FuHai Street, Bao'an District,
Shenzhen