

## 150lm/W 50W External Flood Lights Outdoor Spotlights For House Billboard

Our Product Introduction

for more products please visit us on [ushineraylight.com](http://ushineraylight.com)

### Basic Information

- Place of Origin: Shenzhen, Guangdong
- Brand Name: UShineray
- Certification: CE, EMC, LVD, RoHS, FCC
- Model Number: YXR-FL-50W-E
- Minimum Order Quantity: 1 pcs
- Packaging Details: 1 pcs in Inner box
- Payment Terms: T/T, Paypal, Western Union
- Supply Ability: 3000 Piece/Pieces per Week



### Product Specification

- Power: 50W
- Lamp Luminous Efficiency(lm/w): 7500lm
- Support Dimmer: Customized
- Lighting Solutions Service: Lighting And Circuitry Design, DIALux Evo Layout, LitePro DLX Layout, Auto CAD Layout
- Material: High Strength Aluminum Alloy+Tempered Glass
- IP Grade: IP66
- Applications: Landscape Lighting
- Light Source: Lumileds
- Highlight: **150lm/w flood lights outdoor, 150lm/w outdoor led flood lights, 50w flood lights outdoor for Billboard**



### More Images



## Product Description

### 150lm/W 50W External Flood Lights Outdoor Spotlights for House for Billboard

Illuminate your billboard or home exterior with this 50W external flood light, offering a high light efficacy of 150lm/W. Designed for outdoor use, it provides bright and energy-efficient illumination, enhancing visibility and ensuring effective advertising display. Ideal for residential and commercial applications, this spotlight combines functionality with high performance.

#### Product Features

Power options ranging from 50W to 400W with a light efficacy of 150lm/W.  
Available beam angles include 30°, 60°, 90°, and 120° for versatile lighting.  
The entire lamp can be adjusted up to 180° for flexible illumination.  
Features IP66 rating for water resistance and IK08 impact protection.  
Constructed with a die-cast aluminum body and coated with anti-corrosion powder.  
Boasts an ultra-slim and sleek design for modern aesthetics.  
Stylish and sophisticated appearance for various applications.

#### Product Parameters

Model	YXR-FL-50W-E
Wattage	50W
Other Power Options	100W 150W 200W 300W 400W
Lumen	7500±5%lm
Size(mm)	263*224*45
Net Weight	1.3kg
Light Efficacy	150lm/W ±5%
LED	Lumileds 2835
Beam Angle	30°/60°/90°/120°
Color Temperature	2700-6500K
Input Voltage	AC100-277V
CRI	≥70Ra
PF	>0.97
THD	15%<THD<20%
Humidity	15%~90% RH, no condensing
Work Temperature	-40~60℃
IP Grade	IP66
IK Grade	IK08
Warranty	5 Years
Life Span	≥50000H
Finish	Sprayed with outdoor special powder
Body Material	PC lens + Aluminum housing
Electronic Safety Grade	Class I
Wire	Rubber cable(3*0.75mm²) L=0.5m

#### Product Details

130  
lm/w

## LED FLOOD LIGHT

50W~400W Beam angle: 30°/60°/90°



High brightness









Good quality



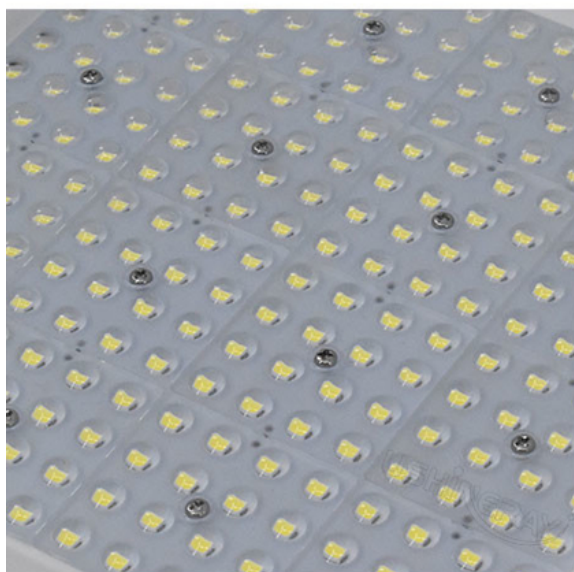
IES test report



 <p>Outdoor waterproofing</p>	 <p>Bright and uniform</p>	 <p>Energy conservation</p>
 <p>Long life and durability</p>	 <p>Strong heat dissipation</p>	 <p>3-Year warranty</p>



## DETAIL Product Details



### Various beam angle

Accurate light distribution:  
30°/60°/90°, suitable for  
different places.

## Various brands of power supply to choose from

Intelligent C chip control circuit, with short circuit, over-voltage, and low voltage protection, more stable, and longer life.



## Flexible installation bracket

The rotatable multi directional lighting installation is convenient.

## Respiratory heat dissipation hole

Efficient heat dissipation breathing hole, effective heat dissipation, and increased product service life.

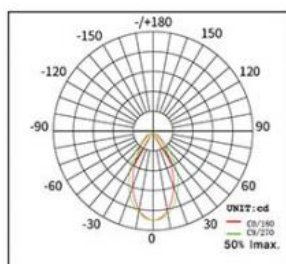




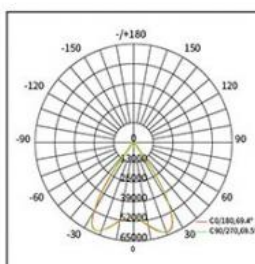
Grey



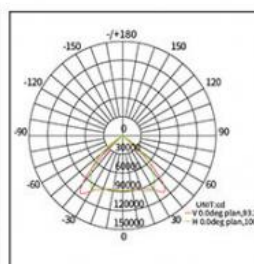
Black



30°

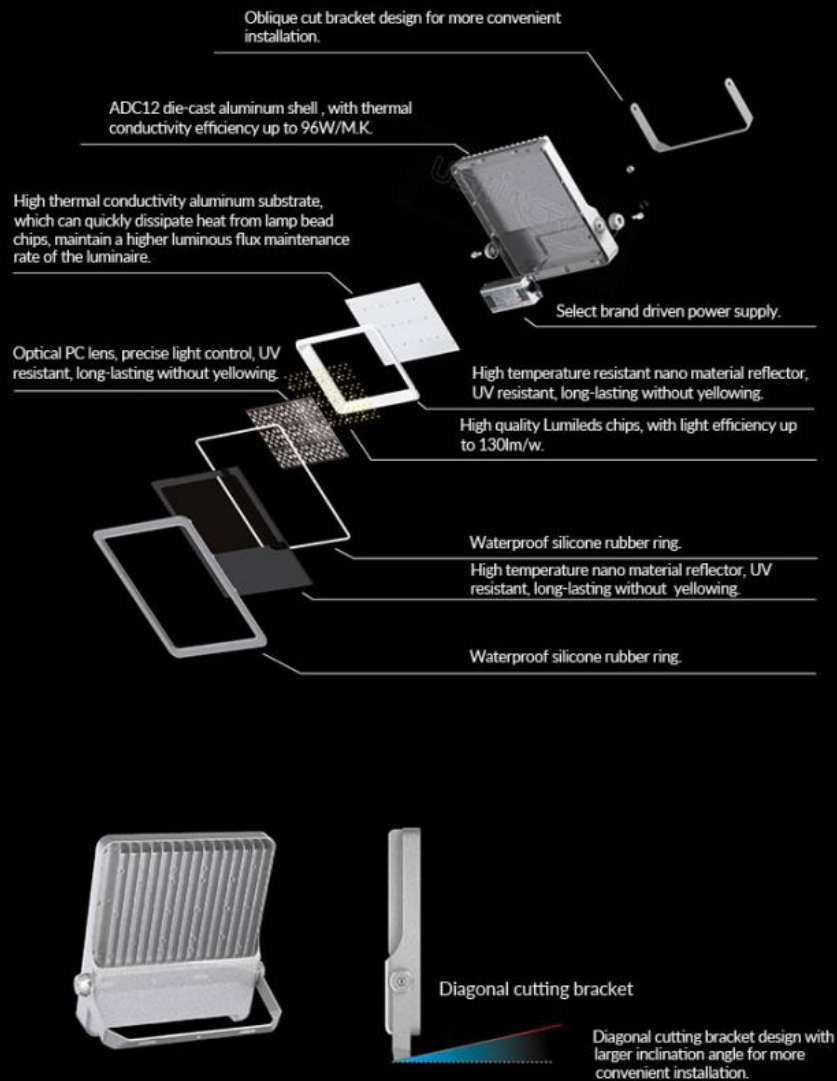


60°



90°

## Exploded view



# THERMAL MANAGEMENT



Quick heat  
dissipation

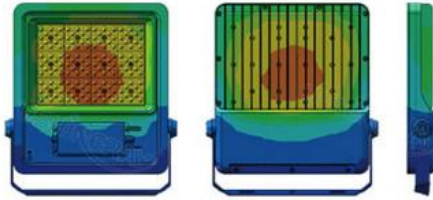


Low  
temperature

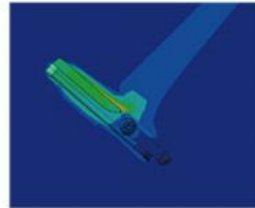


High lifespan

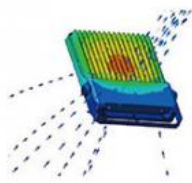
The structure is optimized using advanced  
finite element analysis technology  
maximize service life.



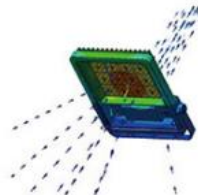
Thermal conductivity



Thermal effect on air



Hot air convection

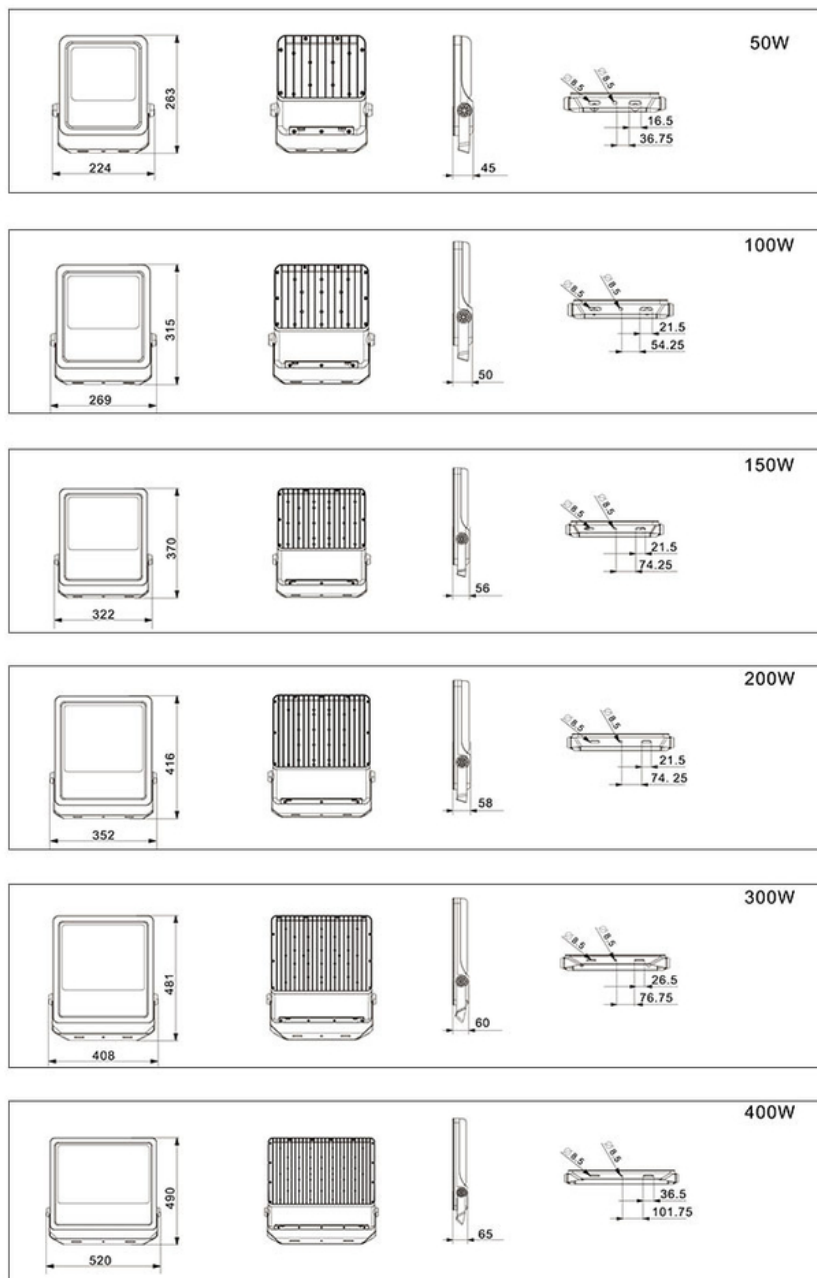


Hot air convection



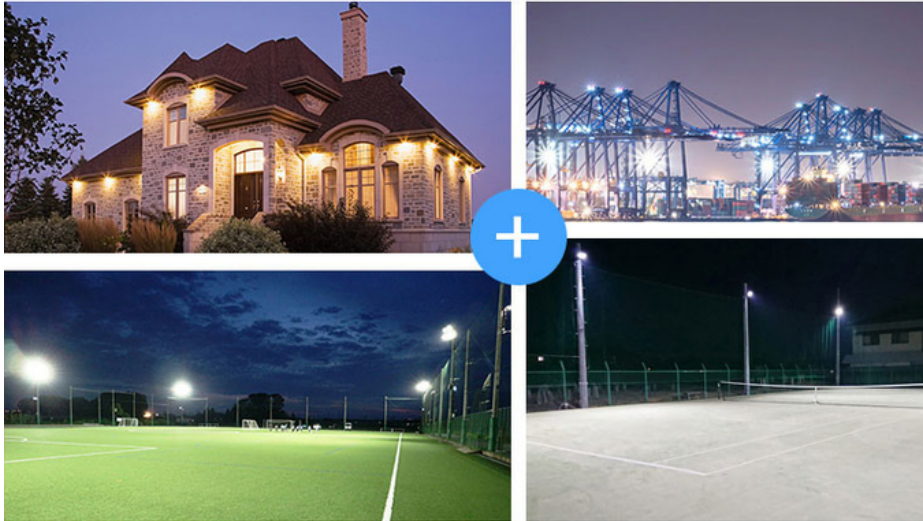
Unit: °C

## Product Size(unit:mm)





## Applications



### FAQ

**Q1. Are you a manufacturer?**

Yes, we have our factory with over 10 years of R&D and manufacturing experience based on ISO quality management since 2011.

**Q2. Do you have any MOQ limit for LED light orders?**

No MOQ, 1pc for sample checking is available.

**Q3. Can I get a lower price for a large quantity of orders?**

Yes, please check with our sales staff for the details.

**Q4. How about the lead time of ordering?**

Our standard sample lead time is 3-5 days, and normal order lead time is 7-10 days. For the large order lead time, please also check with our sales team.

**Q5. Can you provide OEM and ODM services?**

We can provide OEM and ODM products, with customized label designs on the product and carton box. Or customized carton box, and laser print logo on the lamp fixture.

**Q6. What is the payment terms of your formal order?**

We accept payment via TT, Paypal, and Western Union, and we offer EXW, FOB, CIF, and CFR terms.

**Q7. How to deal with the defective?**

All of our products are produced in a strict quality control system, the defective rate is less than 0.2% according to our shipment records. We offer a 3- 5 years warranty for this product, if there is any defective during the warranty, please provide pictures or videos of the working situation of the defective lights, and we will ship the new lights to you within a few days or send it together with your next order.

**USHINERAY** Shenzhen Yongxinrui Lighting Technology Co., Ltd.



+8613410523891



joy@ushineray.com



ushineraylight.com

4F, Building C, Junxing Optoelectronic Industrial Park, Fuyuan 2nd Road, FuHai Street, Bao'an District, Shenzhen