

## 300W AC 85-265V 160LM/W or 190LM/W High Lumen Outdoor LED Flood Light for Park and Garage

Our Product Introduction

for more products please visit us on [ushineraylight.com](http://ushineraylight.com)

### Basic Information

- Place of Origin: Guangdong, China
- Brand Name: UShineray
- Certification: EMC, RoHS, CQC, CCC, CE, FCC, LVD, VDE
- Model Number: YXR-FL-300W-S
- Minimum Order Quantity: 1pcs
- Payment Terms: T/T, Paypal, Western Union



### Product Specification

- Application: Garden
- Color Temperature(CCT): 2800K-6500K
- IP Rating: IP66
- Lamp Body Material: Aluminum
- Beam Angle(°): 25°/60°/90°/120°
- CRI (Ra>): 80
- Input Voltage(V): AC 85-265V
- Lamp Luminous Efficiency(lm/w): 160-190, 160-190lm/W
- Lamp Luminous Flux(lm): 48000
- Warranty(Year): 5-Year
- Working Lifetime(Hour): 50000
- Working Temperature(°C): -40 - 60
- Color Rendering Index(Ra): 70
- Light Source: LED



### More Images



## Product Description

### Products Description



### Product Paramenters

Model	YXR-FL-30W-S	YXR-FL-60W-S	YXR-FL-100W-S	YXR-FL-200W-S	YXR-FL-300W-S	YXR-FL-400W-S	YXR-FL-500W-S
Power(W)	30	60	100	200	300	400	500
Driver	Ushineray	Ushineray	Ushineray	Moso	Moso	Moso	Moso
Size(mm)	168*120*36.3	230*180*69.5	280*215*69.8	459.4*322.5*71.3	459.4*322.5*71.3	585*420*71.8	585*420*71.8
N.W(kg)	0.95	2.6	3.45	6.6	6.9	10.8	11
Input Voltage	AC85-265V; AC100-277V;						
Efficiency	160-190 lm/w						
Beam Angle	25°/ 60°/ 90°/ 120°						
LED Chip	Lumileds 2835						
CCT	2800 - 6500K						
CRI	≥70Ra						
PF	>0.97						
THD	15%<THD<20%						
Work Temp	-40~60°C						
Humidity	25%~90% RH, no condensing						
IP Grade	IP66						
IK Grade	IK08						
Life Span	≥50000h						
Product Material	Aluminum alloy+PC lens						
Power Wire	Rubber cable(3*1mm²) L=0.5m						

### Product Sizes



**Ultra-thin**

**For exterior lighting, floodlighting, and signboard lighting!**

**New design by Sinsary! Unique design**

[Details Images](#)

---

## Original design by Sinsary!

Molding-like design, thick and fashionable design.



Suitable for industrial facilities and sports facilities in general.

- Training fields
- Soccer and tennis courts
- Parking lot
- Factory, warehouse



### Advantages of LEDs

#### LED lighting is instantaneous

Discharge lamps evaporate metal and discharge it, which requires several minutes to a dozen minutes.

In addition, once the lamp is turned off, turning it on again requires more time than when it was turned on.

LED lighting turns on in a matter of minutes, offering superior convenience.

#### Maintains a clean environment with low attractiveness to insects

LED lighting does not emit ultraviolet light, making it less likely to attract insects, therefore, it is also excellent for environmental protection. It reduces the amount of manual cleaning work.

The LED lighting reduces the number of flying insects by turning on the lights at night, which prevents the formation of cobwebs and greatly reduces the amount of manual cleaning work.

#### High Safety and Effective Use of Resources

LED lighting is lightweight and durable because it uses resin and light alloy as its main material. (Some products using glass are made of tempered glass, which is safe even if broken.)

#### They do not get hot like incandescent or discharge lamps.

Incandescent lamps and discharge lamps become hot as the lighting time elapses, causing the adverse thermal effect on the surrounding environment.

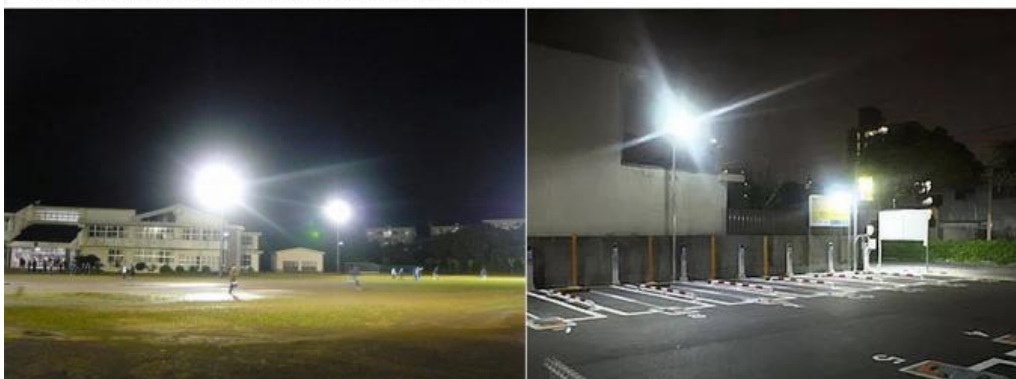
LED lighting emits less ultraviolet and infrared rays (heat rays), thus reducing the impact on the surrounding environment and reducing the electricity bill for air-conditioning in the room.

It also helps in environmental management for people, animals, and plants.

#### LEDs are highly directional

LEDs are highly directional and light distribution is easily controlled.

The necessary brightness can be efficiently illuminated in the required area.



## Uses a filter to prevent condensation!

A ventilation valve is provided at the bottom of the enclosure to allow moisture inside the enclosure to escape while maintaining the waterproof performance.

This prevents excessive humidity and prevents malfunctions due to condensation and water pooling on the glass surface.



**2m 3-core power cord with ground wire used**



Angle adjustable

300°



Use it without worry even on rainy days!

IP66 waterproof dustproof! Can be used without worry even if it rains when working outdoors!



Excellent heat dissipation!



**Heat-resistant aluminum material is used.**

Heat-resistant aluminum is luxuriously used, and heat dissipation performance is further improved with large comb-shaped fins!

The temperature of the housing is about 50 °C even after 3 hours of continuous lighting.

## Adoption of a new stand with our original design!

No need to remove the stand, greatly reducing installation time and labor!



## Impact resistant! Further upgraded and sturdy design



Adopts high hardness ADC12 aluminum alloy  
Aluminum shell with excellent heat dissipation  
Lighting fixture has excellent impact resistance



**IP66**

No need to worry about rainy days,  
excellent waterproof performance

**Outdoor**



Factory



Warehouse



Light up



Multi-purpose  
facilities

**Waterproof**



**Waterproof and dustproof rating IP66!**

**Excellent waterproof and dustproof design for outdoor use!**







+8613410523891



joy@ushineray.com



ushineraylight.com

4F, Building C, Junxing Optoelectronic Industrial Park, Fuyuan 2nd Road, FuHai Street, Bao'an District,  
Shenzhen