

Die Cast Aluminum LED Stadium Lights 1250W Led Sports Flood Lights For Softball Field

Our Product Introduction

for more products please visit us on ushineraylight.com

Basic Information

- Place of Origin: Guangdong, China
- Brand Name: UShineray
- Model Number: YXR-QC-1250W-C
- Minimum Order Quantity: 1pcs
- Payment Terms: T/T, Paypal, Western Union



Product Specification

- Support Dimmer: Yes
- Working Time (hours): 50000
- Input Voltage(V): AC 100-277 V
- Color Temperature(CCT): 2800-6500K
- Beam Angle(°): 8°/20°/40°/60° 49°21°(asymmetrical 50°)
49°21°(asymmetrical 65°)
- IP Rating: IP66
- Application: Football Field, Badminton Court, Basketball Court, Baseball Field
- Light Source: LED
- Warranty(Year): 5-Year
- LED Chip: San'an/Lumileds
- Highlight: **led stadium lights 1250w,
1250w led sports flood lights,
die cast aluminum led stadium lights**



More Images



Product Description

Die Cast Aluminum 1250W Stadium Lights for Softball Field

Illuminate your softball field with our 1250W stadium lights, featuring die-cast aluminum construction. These lights are built for strength and reliability, providing powerful and consistent lighting. Ideal for both amateur and professional fields, their robust design ensures they can withstand the rigors of outdoor environments while delivering superior illumination.

Product Features

High-Performance LED Technology: Utilizes advanced SMD 5050 LED chips with 150lm/W efficacy, delivering exceptional brightness and energy savings.

Optimal Heat Management: Features 1060 pure aluminum fins for efficient heat dissipation, ensuring a prolonged LED lifespan of up to 50,000 hours in temperatures ranging from -35°C to 55°C.

Versatile Power Compatibility: Compatible with leading driver brands, AC100V~277V or AC90-305V inputs, providing flexibility and reliability for various power configurations.

Customizable Lighting Options: Offers multiple angles (8°/20°/40°/60°) adjustable with a 180° bracket, enabling tailored lighting solutions for diverse applications.

Rugged Outdoor Construction: IP66 certified for superior protection against dust and water ingress, designed to withstand harsh outdoor conditions, supported by a 5-year warranty for long-term reliability.

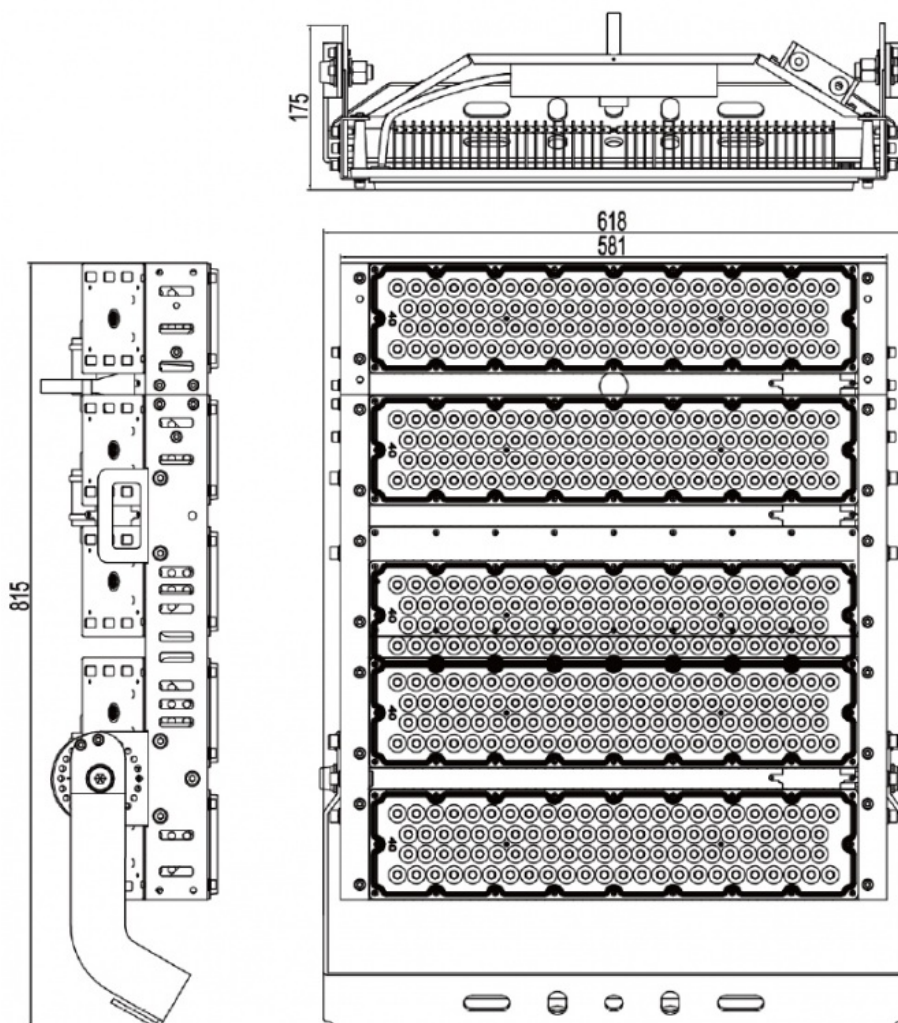


Product Parameters

Model	YXR-QC-1250W-C
Wattage	1250W
Other Power Options	250W 500W 750W 1000W 1500W
Lumen	187500±5%lm
Size(mm)	618*815*177 (Five Module)
Net Weight	26kg
Efficacy	150lm/W ±5%
Beam Angle	8°/20°/40°/60° 49°21°(asymmetrical 50°) 49°21°(asymmetrical 65°)
LED	Sanan / Lumileds 5050
Color Temperature	3000K-6500K
Input Voltage	AC100-277V / AC90-305V
CRI	≥70Ra
PF	>0.97
THD	15%<THD<20%
Work Temperature	-35~55°C
Humidity	15%~90% RH, no condensing
IP Grade	IP66
IK Grade	IK08
Warranty	5 Years
Life Span	≥50,000 Hrs (LM70 @ 35°C)
Finish	Sprayed with outdoor special powder
Body Material	PC lens + Aluminum housing

Electronic Safety Grade	Class I
Wire	Rubber cable(3*1mm ²) L=0.5m

Product Sizes



Product Details



Lumileds SMD5050 LED chips

Light transmittance of PC more than 93%, light efficiency 150+5% lm/w, low luminous decay.



The bracket is equipped with a high-precision dial
The whole product can be 180°adjustable, easy to use install and maintain.



Moso or other famous brand LED driver
High efficiency, energy saving, stable, flicker-free, longer span life.

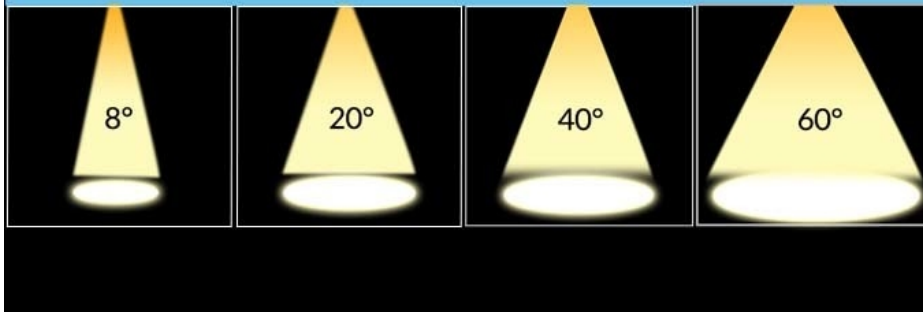


1060 Pure aluminum fins riveting design
Hollow out in the middle of the heat sink increasing air convection, better heat dissipation.

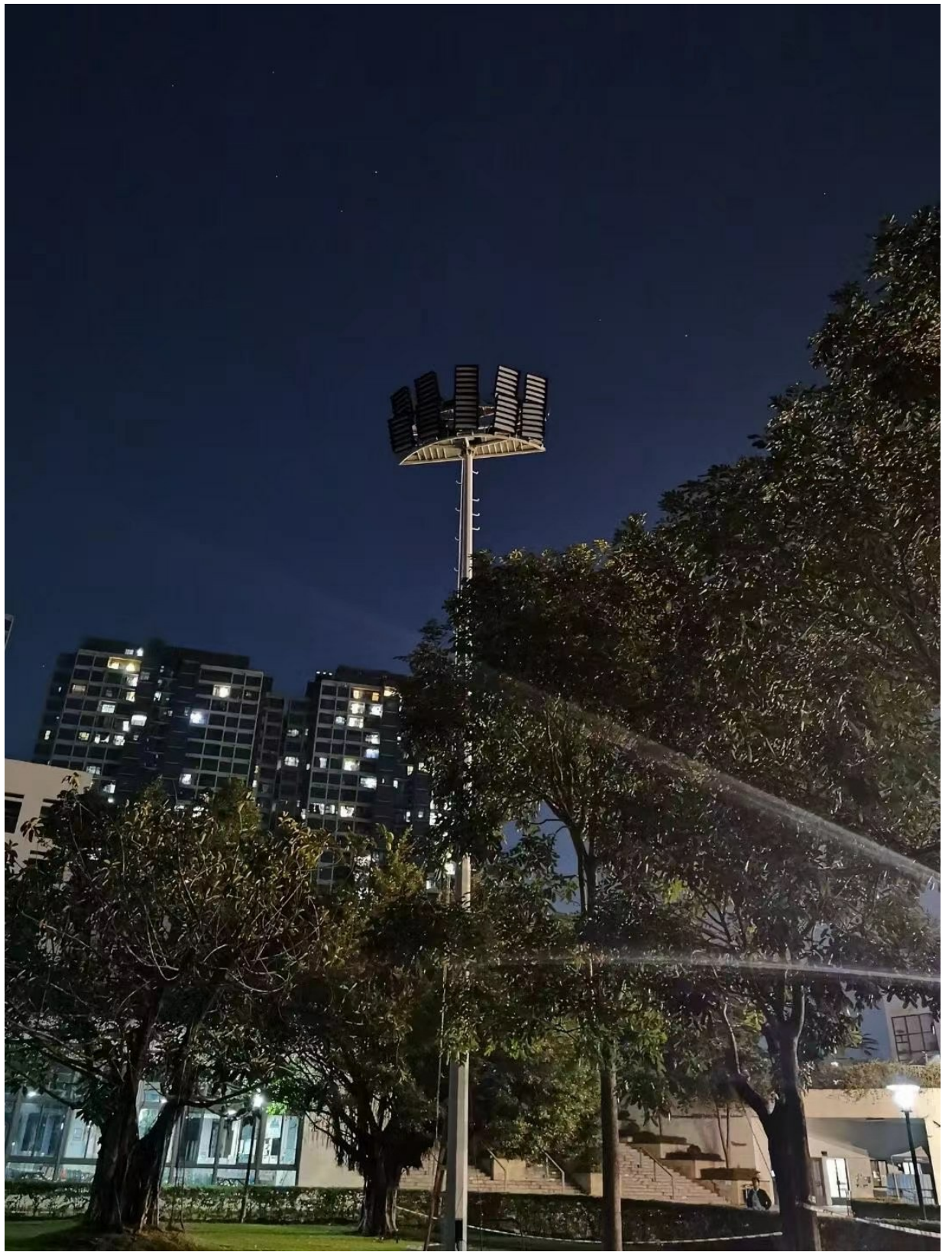


Whole lamp with Ingress protection IP66
Ingress Protection IP66 impact resistance IK08.

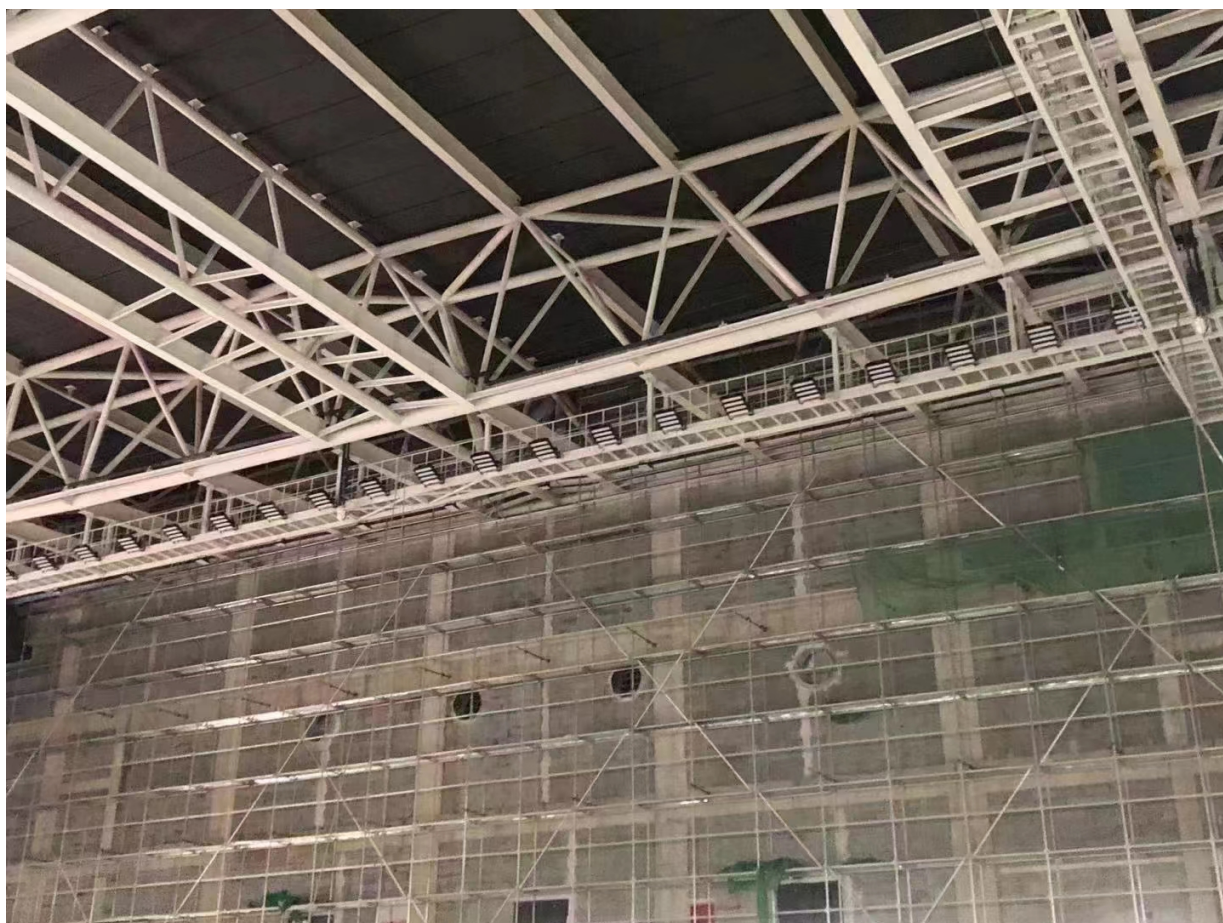
Various beam angle options



Project Cases







USHINERAY Shenzhen Yongxinrui Lighting Technology Co., Ltd.



+8613410523891



joy@ushineray.com



ushineraylight.com

4F, Building C, Junxing Optoelectronic Industrial Park, Fuyuan 2nd Road, FuHai Street, Bao'an District,
Shenzhen