

## Eco-Friendly 1250W Football Pitch Floodlights For Soccer Stadium

Our Product Introduction

for more products please visit us on [ushineraylight.com](http://ushineraylight.com)

### Basic Information

- Place of Origin: Guangdong, China
- Brand Name: UShineray
- Model Number: YXR-QC-1000W-A
- Minimum Order Quantity: 1pcs
- Payment Terms: T/T, Paypal, Western Union



### Product Specification

- Support Dimmer: Yes
- Lighting Solutions Service: DIALux Evo Layout, LitePro DLX Layout, Project Installation
- Light Source: LED
- Warranty(Year): 5-Year
- Keyword: 1250W Stadium Light
- Power Options: 250W/500W/750W/1000W/1250W/1500W/20
- Applications: Football Pitch Tennis Court Illumination
- LED Driver: Moso/Normal
- Highlight: 1250w led stadium lights, 1250w stadium flood lights, 250w led stadium lights



### More Images



## Product Description

### Eco-Friendly 1250W Football Pitch Floodlights for Soccer Stadium

Enhance your soccer stadium with our eco-friendly 1250W football pitch floodlights. Designed with energy efficiency in mind, these floodlights offer bright, uniform illumination while minimizing environmental impact. They are ideal for large sports fields, combining sustainability with high performance.

#### Top Features

1. HIGH EFFICIENCY & ENERGY SAVING
2. 5 YEAR WARRANTY & LONG SERVICE LIFE
3. POWER SELECTABLE: Equipped With Three Working Wattage Options
4. DUSK-TO-DAWN PHOTOCELL
5. CE FCC ROHS & SAFETY INSTALLATION
6. SUPER WATERPROOF: Ip65 Certified Water Resistant And Dustproof



#### Product Parameters

Model	YXR-QC-1250W-A
Power	1250W
Lumens(lm)	187500
Other Power Options	250W/500W/750W/1000W/1500W/2000W
Weight(kg)	29.5
Sizes(mm)	1035*420*155
Efficacy	150lm/W
CCT	2700-6500K
CRI	≥70Ra
LED Chips	San'an 3030/Lumileds 3030/San'an 5050/Lumileds 5050
PF	>0.95
Input Voltage	AC100-277V(Moso)
Beam Angle	10°/25°/45°/60°/ asymmetrical 80°155°(5050) 60°/ asymmetrical 80°155°(3030)
Work Temp	-35~55°C
Humidity	15%~90% RH, no condensing
Finish	Sprayed with outdoor special powder
Life Span	50000hrs
IP Grade	IP66
IK Grade	IK08
Body material	PC lens + Aluminum housing

Power Wire	Rubber cable(3*1.5mm <sup>2</sup> ) L=0.3m
Electronic safety grade	Class I

## Product Details



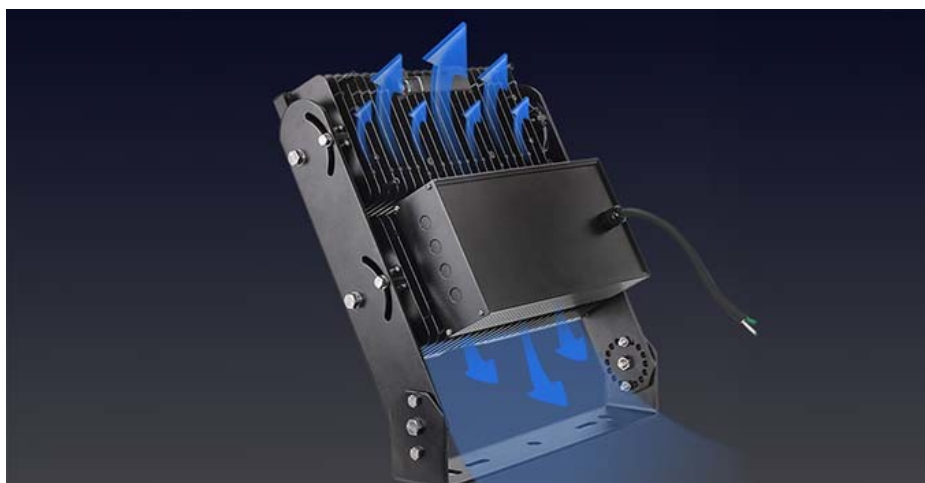
### Rotary adjustable bracket

Single module supports adjustable angle; bracket can be adjusted 180°.



### High lumen chip

Professional stadium light distribution lens. with high lumen chips to maximum the output, the whole lamp light efficiency is up to 150lm±5%.



### Thickened aluminum die-casting shell for faster heat dissipation

Thickened heat dissipation ribs, fast heat dissipation, and ensure the light source life span





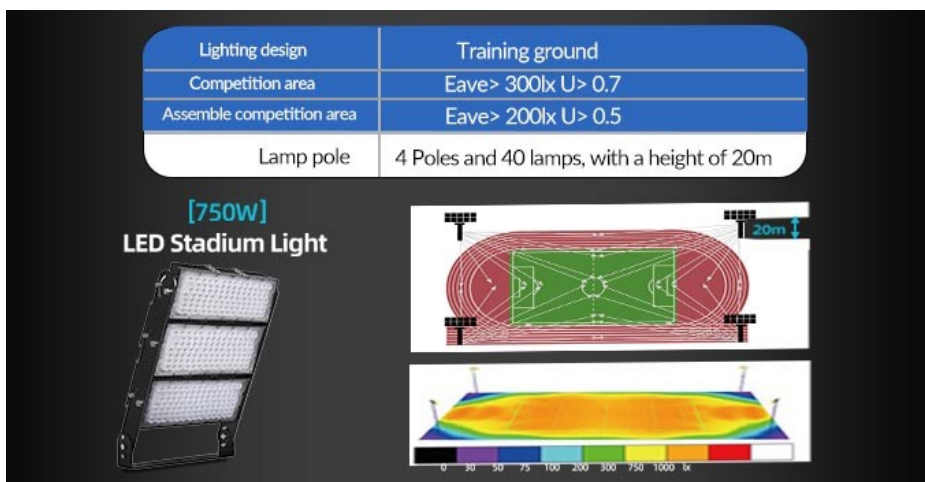
#### Built-in power supply

Aluminum drive house can fast conduct the heat from the driver to be out.



#### The whole lamp IP66 waterproof

The whole lamp IP66 waterproof and dust-proof rated.



#### Product Applications

Sports lighting area: football field, badminton court, basketball court, baseball field, tennis court, table tennis field, racetrack. High pole lighting area: mining area, outdoor construction area, mobile tower lighting.

### Scenario Cases

Applicable to: football field, Basketball court, golf course, natatorium, exhibition hall, plaza, airport, wharf, building and other large-scale lighting places.



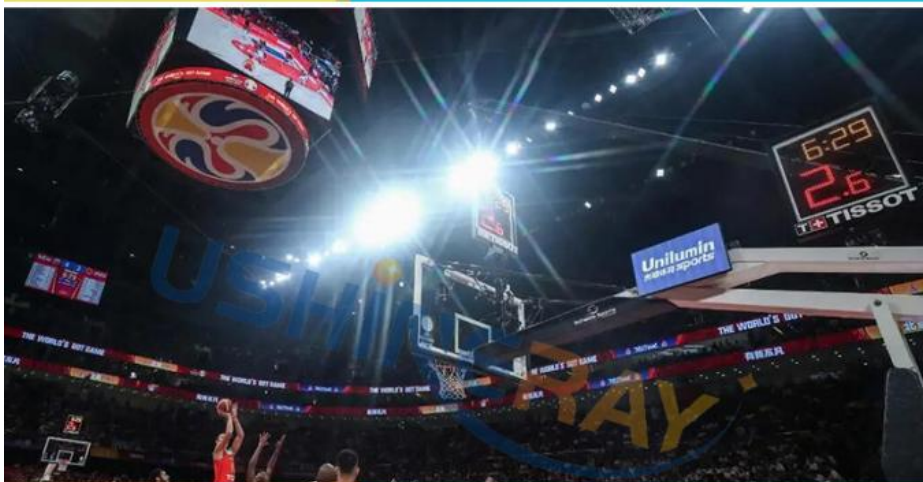
### Football field lighting

High brightness and long-range illumination of football field lighting.



### High pole lighting

Square lighting with high brightness, energy saving and electricity saving.



### Basketball lighting

Low glare and no stroboscopic in basketball court lighting.

**USHINERAY** Shenzhen Yongxinrui Lighting Technology Co., Ltd.

+8613410523891

joy@ushineray.com

ushineraylight.com

4F, Building C, Junxing Optoelectronic Industrial Park, Fuyuan 2nd Road, FuHai Street, Bao'an District, Shenzhen

