

## Low UGR IP66 Outdoor Field Lights 400w Led Stadium Light For Rugby Court

Our Product Introduction

for more products please visit us on [ushineraylight.com](http://ushineraylight.com)

### Basic Information

- Place of Origin: Shenzhen
- Brand Name: UShineray
- Certification: EMC, RoHS, CE, FCC, LVD
- Model Number: YXR-QC-400W-E
- Minimum Order Quantity: 1pcs
- Payment Terms: T/T, Paypal, Western Union

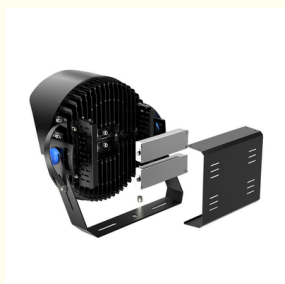


### Product Specification

- Application: Outdoor Sports Arena
- Beam Angle(°): 15°/30°/45°/60°
- Warranty(Year): 5-Year
- Color Rendering Index(Ra): 70
- Light Source: LED
- Support Dimmer: Yes
- Types: LED Stadium Light Outdoor
- Power: 400W
- LED Chip: San'an/ Lumileds 3030
- LED Driver: MOSO
- Highlight: ip66 outdoor field lights, 400w led stadium light for rugby court, Low UGR 400w led stadium light



### More Images



## Product Description

### Low UGR IP66 Outdoor 400W Stadium Lights Sports Light For Rugby Court

Experience superior visibility with our 400W stadium lights, engineered for rugby courts. Featuring a low Unified Glare Rating (UGR), these lights reduce glare and visual discomfort, ensuring clear and comfortable viewing. Ideal for enhancing game play and spectator experience, these lights provide bright, even coverage across the field.

### Product Features

**Light Control Brim:** The lamp brim effectively directs light downward, reducing sky glare and light waste while enhancing anti-glare performance.

**Premium PC Optical Lens:** Utilizes a professional-grade, non-yellowing PC lens for reliable and consistent light transmission.

**Isolated Waterproof Power Supply:** The power supply is housed in a separate iron enclosure, allowing for better heat dissipation and longer service life.

**Sturdy Installation Bracket:** Features a strong bracket for secure mounting, ensuring durability and stability.

### Product Parameters

Model	YXR-QC-400W-E
Power	400W
Lumens(lm)	60000
Other Power Options	300W/500W/600W/800W/1000W/1200W/1600W/1800W
Weight(kg)	10.8
Sizes(mm)	438*434*356
Efficacy	150lm/W
CCT	2700-6500K
CRI	≥70Ra
LED Chips	Lumileds 3030
PF	>0.97
Input Voltage	AC100-277V(Moso)
Beam Angle	15°/30°/45°/60°
Work Temp	-35~55°C
Humidity	15%~90% RH, no condensing
Finish	Sprayed with outdoor special powder
Life Span	≥50,000 Hrs (LM80 @ 35°C )
IP Grade	IP66
IK Grade	IK08
Body material	PC lens + Aluminum housing
Power Wire	Rubber cable(3*1mm <sup>2</sup> ) L=0.3m
Electronic safety grade	Class I

### Product Details



## LED Sports Lights

E Series Specifications

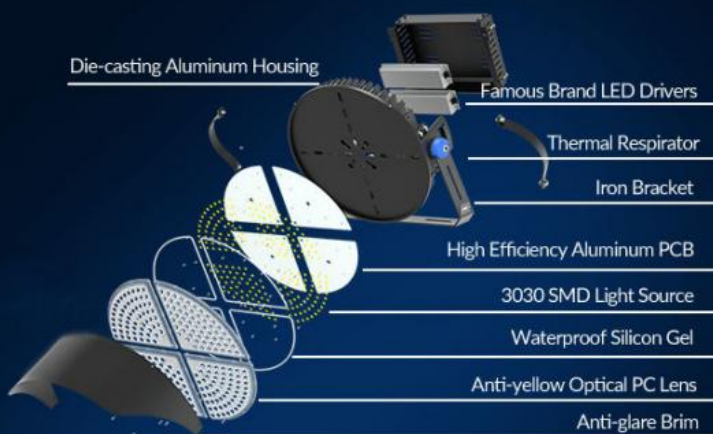
— 300W~1800W — 150lm/W



### ADC12 die-cast aluminum heat sink

Heat dissipation efficiency up to 96W/M.K..

High thermal conductivity aluminum substrate, rapid heat dissipation, reduce light decay.



## IP66 Whole Lamp Protection

Silicone waterproof sealing strip UV-resistant material, reliable without failure, durable.

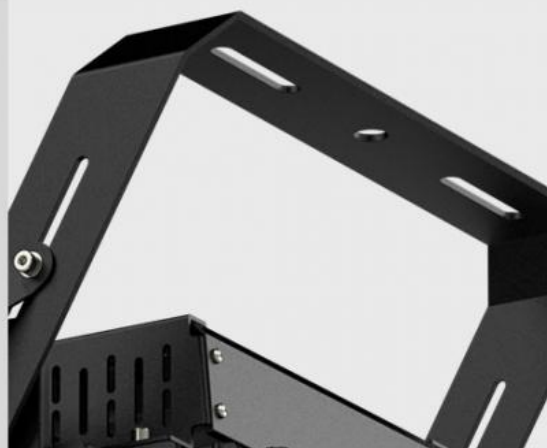


— Show Details —



With lamp brim to prevent light from scattering to the sky and reduce the light waste, anti-glare.

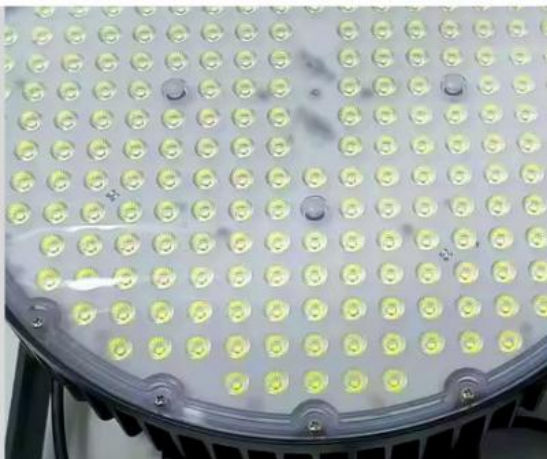
Strong bracket for firmer installation.



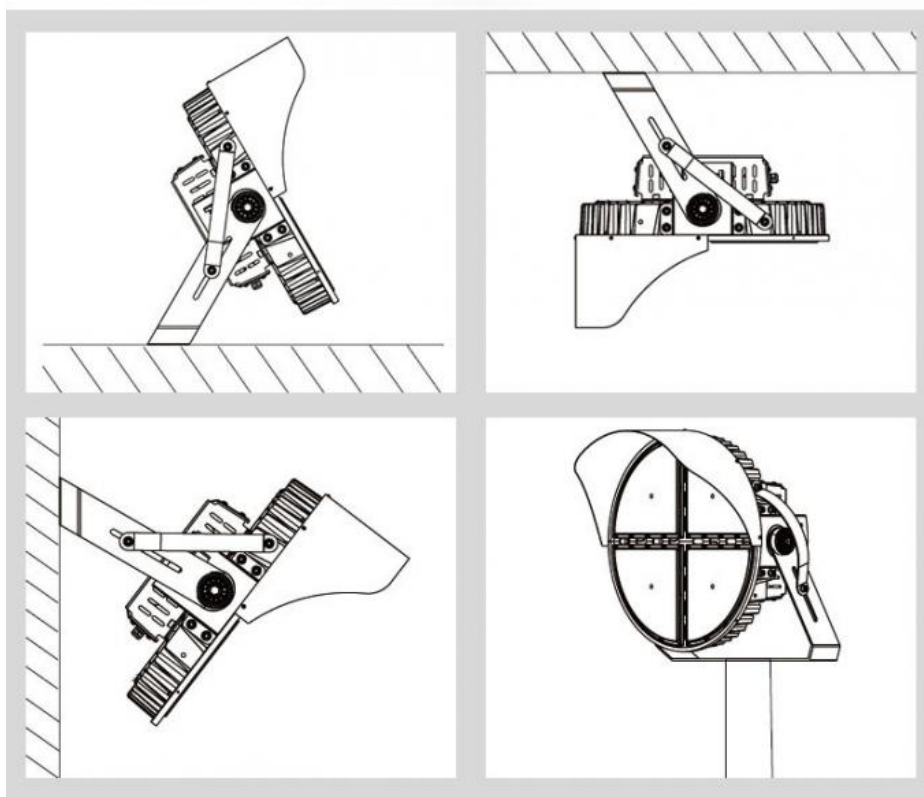


High efficiency Moso driver or other famous brand power supply is used, constant current and voltage, with shortcircuit, over-voltage over-current, over temperature protection the efficiency up to 95%.

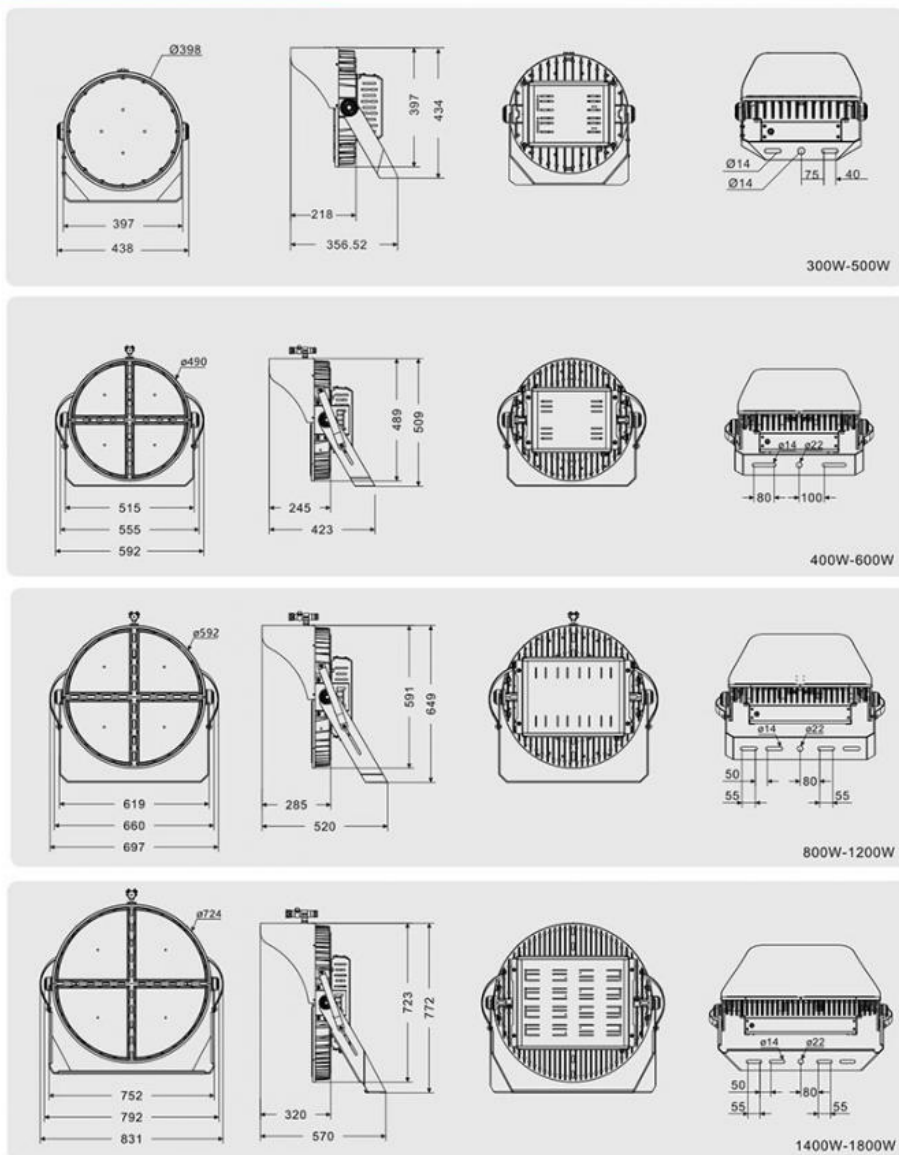
High light transmittance >93%, using brand 3030 LED chips, light efficacy is up to 150lm/W, good CRI, low heat and long lifespan.



## Installations



## Product Size(unit:mm)



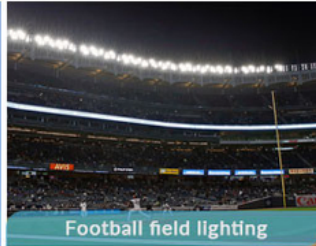
## Package



## Application Scenarios



Basketball court lighting



Football field lighting



Baseball lighting

### Production sites





**USHINERAY** Shenzhen Yongxinrui Lighting Technology Co., Ltd.

+8613410523891

joy@ushineray.com

ushineraylight.com

4F, Building C, Junxing Optoelectronic Industrial Park, Fuyuan 2nd Road, FuHai Street, Bao'an District, Shenzhen