

High Lighting SMD LED Sports Lights 600W Sport Court Lighting For Stadium

Our Product Introduction

for more products please visit us on ushineraylight.com

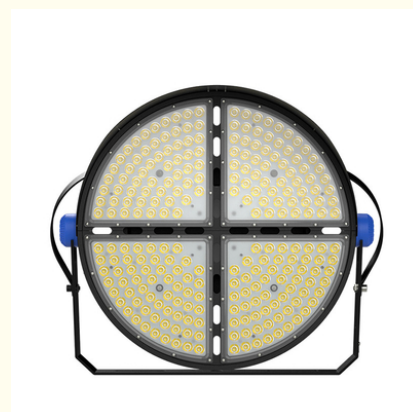
Basic Information

- Place of Origin: Shenzhen
- Brand Name: UShineray
- Certification: FCC, CE, EMC, RoHS, LVD
- Model Number: YXR-QC-600W-E
- Minimum Order Quantity: 1pcs
- Payment Terms: T/T, Paypal, Western Union



Product Specification

- Application: Football Field, Tennis Court, Hockey Field,
- Beam Angle(°): 15°/30°/45°/60°
- Warranty: 5-years
- Color Rendering Index(Ra): Ra70
- Light Source: SMD LED
- Support Dimmer: Yes
- Types: LED Sport Stadium Light
- Power: 600W
- LED Chip: San'an/ Lumileds 3030
- LED Driver: MOSO Or Inventronics
- Highlight: **smd led sports lights, led sports lights 600w, smd sports lighting fixtures**



More Images



Product Description

High Lighting Efficiency 600W Sport Court Lighting for Sport Stadium

Maximize your sports stadium's lighting efficiency with our 600W sports court lights. Engineered for high performance, these lights offer excellent illumination while optimizing energy consumption. Perfect for sports courts and stadiums, they ensure bright, consistent lighting while reducing operational costs.

Product Features

1. Integrated die casting heat sink: Excellent thermal management & compact structure.
2. Die-casting aluminum arm & bracket: Anti-typhoon 17 & High corrosion resistance for coastal area.
3. Integrated breather valve: Balance the internal & external temperature and humidity
4. Spill shield: Reduce light pollution.
5. Racked angle: Allows for precise installation.
6. Double surge protection: Driver & extra 10KV SPD.
7. Top brand LED chip and driver, ensure the product quality and lifetime.
8. Optical lighting distributions: 10°, 25°, 45°, 60°, 90°.
9. High luminous efficacy: 160lm/W.
10. Ingress protection & Impact protection rating: IP66 & IK08

Product Parameters

| | |
|-------------------------|---|
| Model | YXR-QC-600W-E |
| Power | 600W |
| Lumens(lm) | 90000 |
| Other Power Options | 300W/400W/500W/800W/1000W/1200W/1600W/1800W |
| Weight(kg) | 17.4 |
| Sizes(mm) | 592*509*423 |
| Efficacy | 150lm/W |
| CCT | 2700-6500K |
| CRI | ≥70Ra |
| LED Chips | Lumileds 3030 |
| PF | >0.97 |
| Input Voltage | AC100-277V(Moso) |
| Beam Angle | 15°/30°/45°/60° |
| Work Temp | -35~55°C |
| Humidity | 15%~90% RH, no condensing |
| Finish | Sprayed with outdoor special powder |
| Life Span | ≥50,000 Hrs (LM80 @ 35°C) |
| IP Grade | IP66 |
| IK Grade | IK08 |
| Body material | PC lens + Aluminum housing |
| Power Wire | Rubber cable(3*1mm²) L=0.3m |
| Electronic safety grade | Class I |

Product Details



LED Sports Lights

E Series Specifications

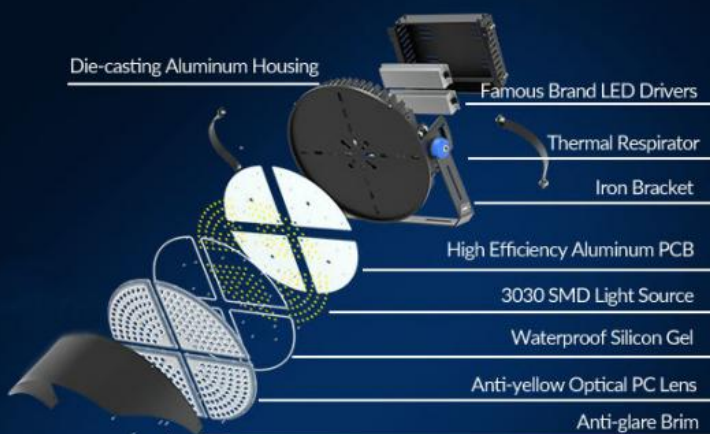
— 300W~1800W — 150lm/W



ADC12 die-cast aluminum heat sink

Heat dissipation efficiency up to 96W/M.K..

High thermal conductivity aluminum substrate, rapid heat dissipation, reduce light decay.



IP66 Whole Lamp Protection

Silicone waterproof sealing strip UV-resistant material, reliable without failure, durable.

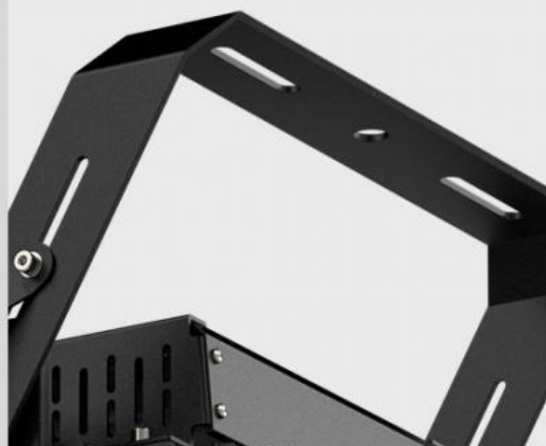


— Show Details —



With lamp brim to prevent light from scattering to the sky and reduce the light waste, anti-glare.

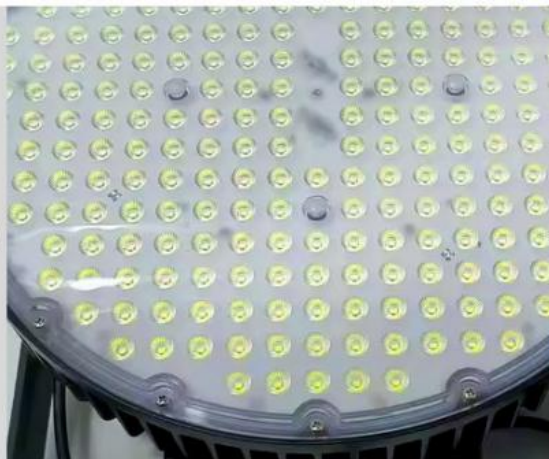
Strong bracket for firmer installation.



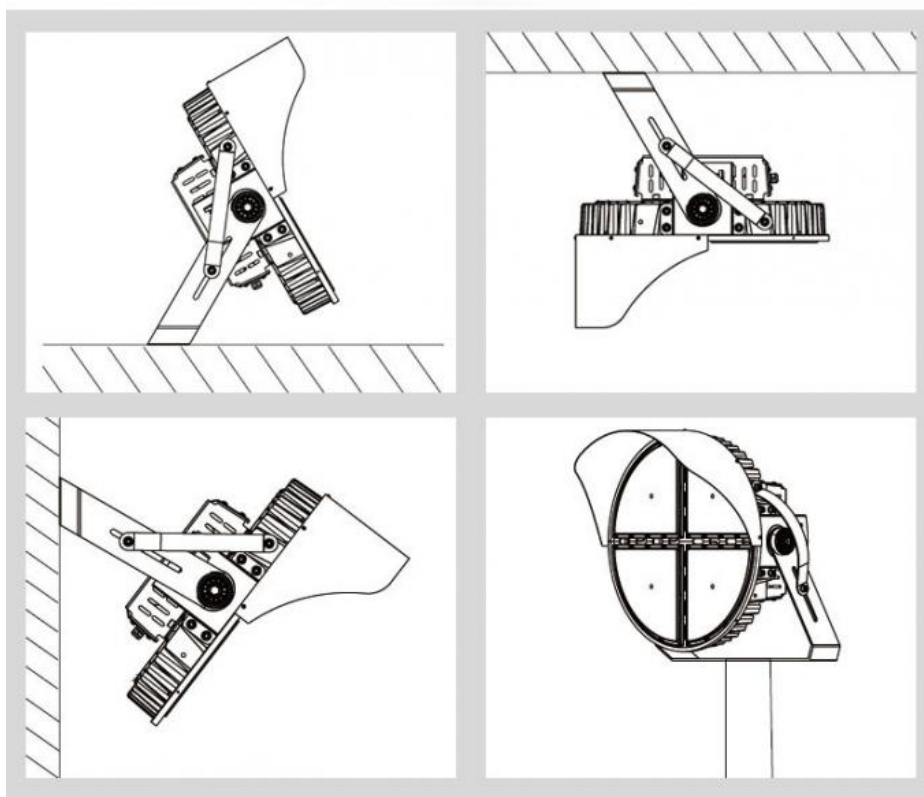


High efficiency Moso driver or other famous brand power supply is used, constant current and voltage, with shortcircuit, over-voltage over-current, over temperature protection the efficiency up to 95%.

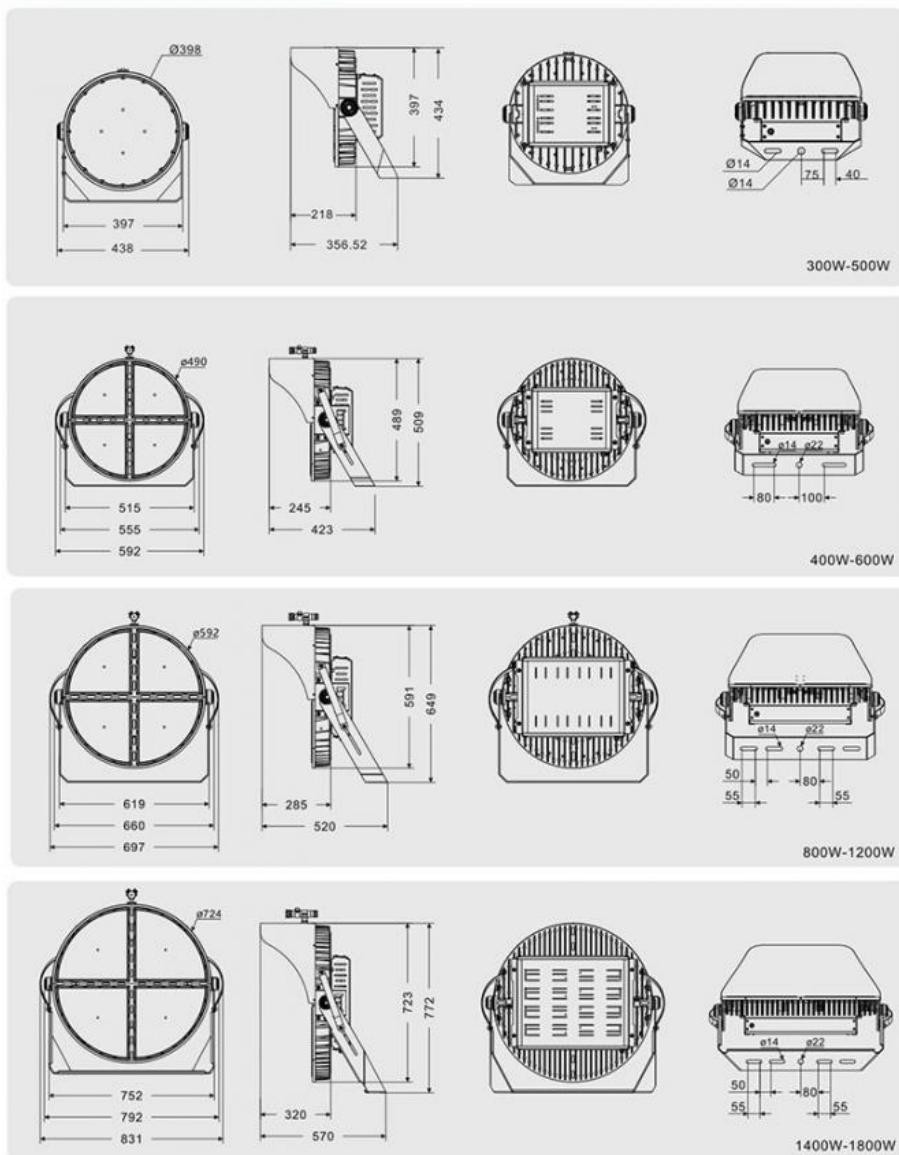
High light transmittance >93%, using brand 3030 LED chips, light efficacy is up to 150lm/W, good CRI, low heat and long lifespan.



Installations



Product Size(unit:mm)



Package

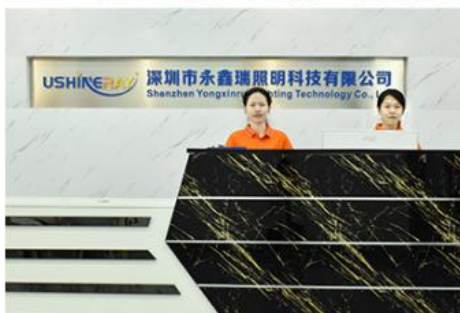


Applications

Outdoor sports arena, Outdoor venues, Football field, Tennis court, Hockey field, Rugby pitch, Riding arena, Volleyball court, Outdoor water polo, Training pitch, Training fields, Backyard lighting, Ski resorts, Parking lot, Parking squares and other outdoor lighting places.

Company Profile

OUR FACTORY





USHINERAY Shenzhen Yongxinrui Lighting Technology Co., Ltd.

+8613410523891

joy@ushineray.com

ushineraylight.com

4F, Building C, Junxing Optoelectronic Industrial Park, Fuyuan 2nd Road, FuHai Street, Bao'an District, Shenzhen