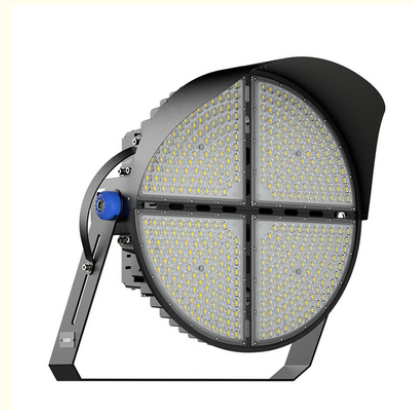


## 1000W Round Led Field Lights Sport Ra70 Portable Field Lights For Outdoor Stadium

### Our Product Introduction

#### Basic Information

- Place of Origin: Guangdong, China
- Brand Name: UShineray
- Certification: FCC, CE, EMC, RoHS, LVD
- Model Number: YXR-QC-1000W-E
- Minimum Order Quantity: 1pcs
- Payment Terms: T/T, Paypal, Western Union



#### Product Specification

- Color: Black
- Beam Angle(°): 15°/30°/45°/60°
- Laser Sight: Available
- Color Rendering Index(Ra): Ra70
- Light Source: SMD LED
- Support Dimmer: Yes
- Types: LED Cricket Stadium Sports Light
- Power: 1000W
- LED Chip: Lumileds 3030
- LED Driver: MOSO Or Inventronics
- Highlight: round led field lights, ra70 portable field lights, portable field lights for outdoor stadium



## Product Description

### 1000W Round Led Field Lights Sport Light For Outdoor Stadium

Illuminate your outdoor stadium with our 1000W LED field lights, featuring an impressive efficacy of 160lm/W. These lights deliver bright, efficient illumination, perfect for large outdoor sports venues. They provide superior visibility while optimizing energy usage, making them an excellent choice for stadium lighting.

#### Product Features

**Glare Minimizing Brim:** Integrates a brim to prevent light from spilling into the sky, reducing glare and light waste effectively.

**Professional PC Optical Lens:** Uses a non-yellowing material for the lens, ensuring consistent and clear lighting performance.

**External Power Supply Protection:** The power supply is housed in a waterproof iron casing, with thermal separation from the lamp to improve longevity.

**Firm Installation Bracket:** Comes with a strong bracket to ensure the light fixture remains securely mounted.

#### Product Parameters

Model	YXR-QC-1000W-E
Power	1000W
Lumens(lm)	150000
Other Power Options	300W/400W/500W/600W/800W/1200W/1600W/1800W
Weight(kg)	24.8
Sizes(mm)	697*649*520
Efficacy	150lm/W
CCT	2700-6500K
CRI	≥70Ra
LED Chips	Lumileds 3030
PF	>0.97
Input Voltage	AC100-277V(Moso)
Beam Angle	15°/30°/45°/60°
Work Temp	-35~55℃
Humidity	15%~90% RH, no condensing
Finish	Sprayed with outdoor special powder
Life Span	≥50,000 Hrs (LM80 @ 35℃ )
IP Grade	IP66
IK Grade	IK08
Body material	PC lens + Aluminum housing
Power Wire	Rubber cable(3*1.5mm²) L=0.3m
Electronic safety grade	Class I

#### Product Details

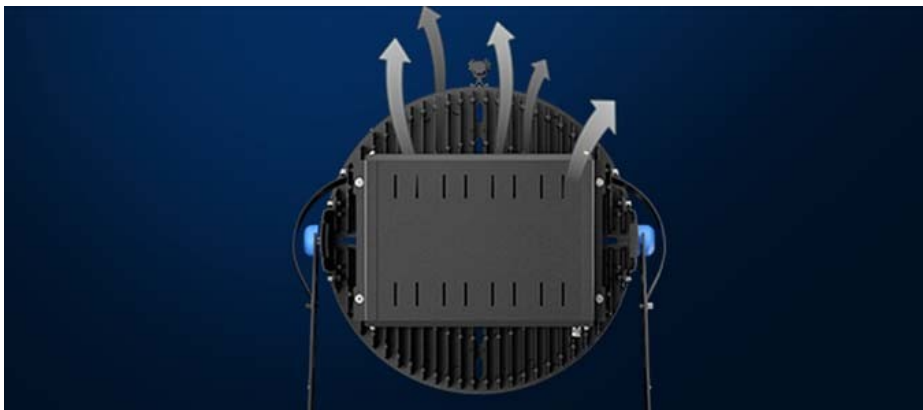




**Strong bracket**  
Strong bracket for firmer installation.



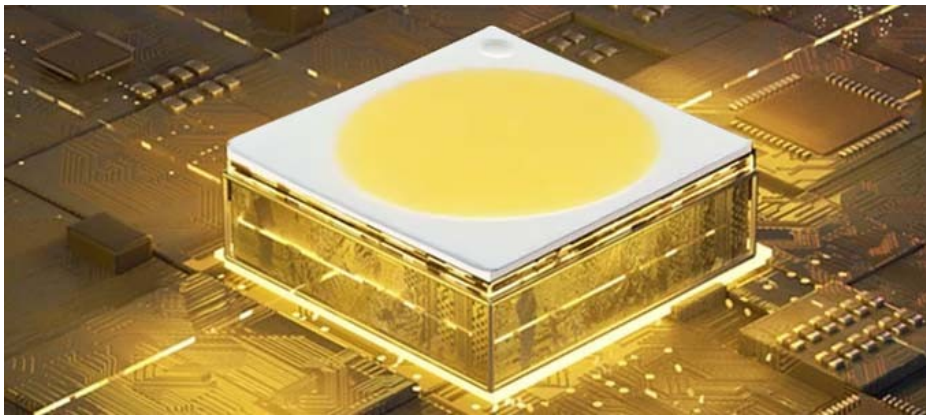
**IP66 Whole lamp protection**  
Silicone waterproof sealing strip UV resistant material, reliable without failure durable.



**Excellent heat dissipation**  
ADC12 die-casting aluminum heat sink, high thermal conductivity aluminum substrate, the efficiency is up to 96W/M.K.

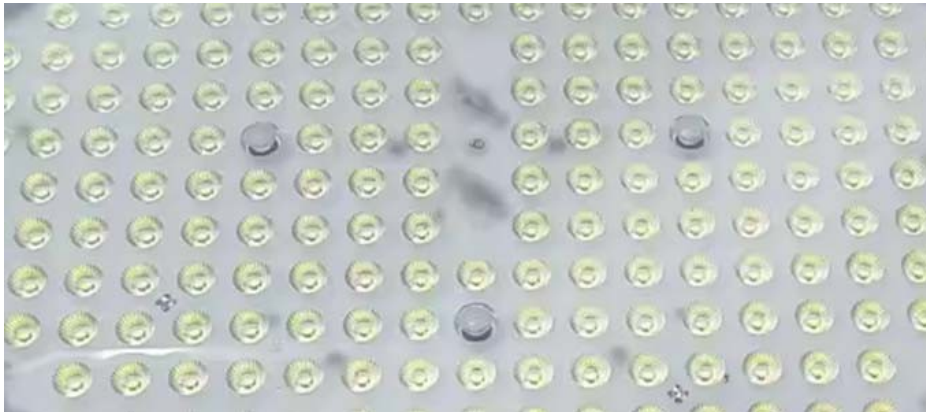


**International famous LED Driver**  
With short circuits, over-voltage, over-current protection, and anti-surge protection, over-temperature protection, the efficiency up to 95%



3030 SMD light source design

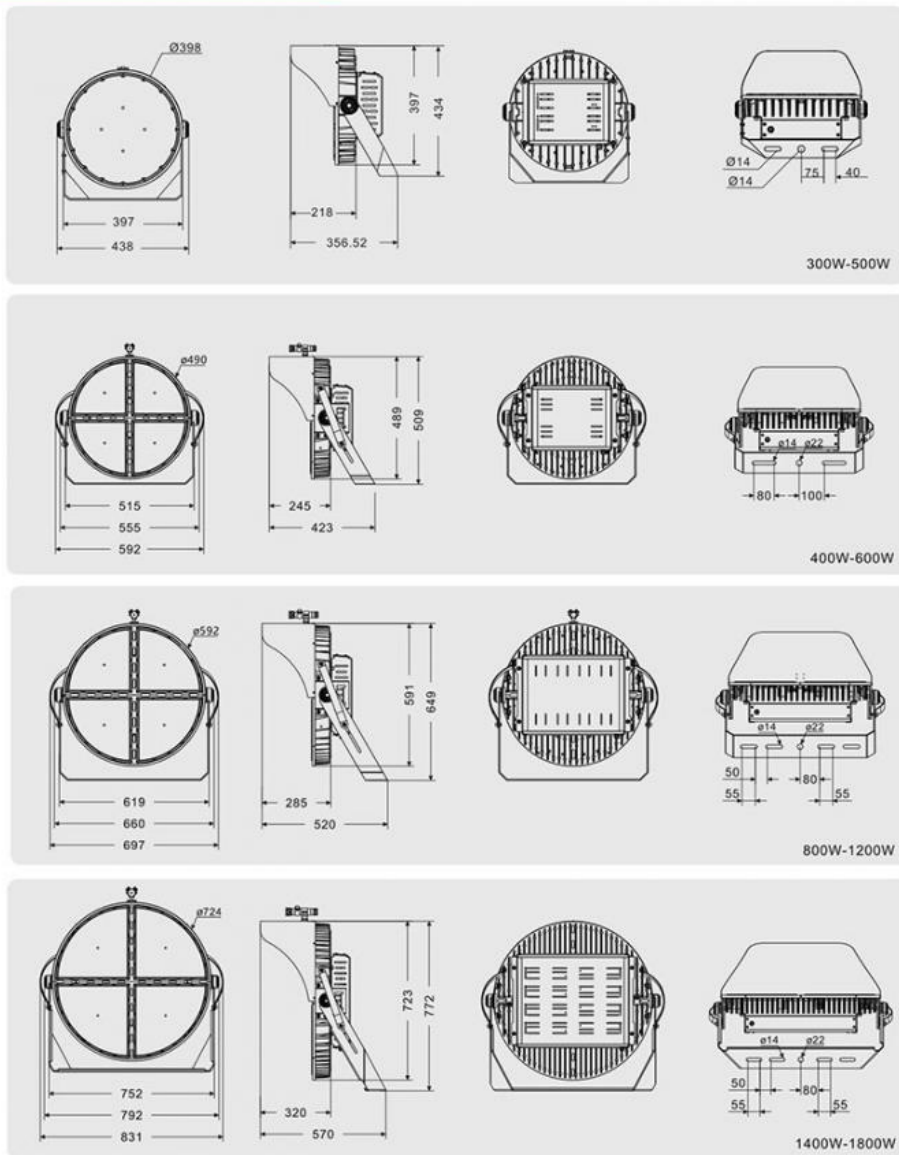
High-quality LED chips for better visual experience prioritize stable constant current drive without flicker waste, anti glare.



Professional optical PC lens

Professional optical PC lens, non-yellowing material.

## Product Size(unit:mm)



## Applications

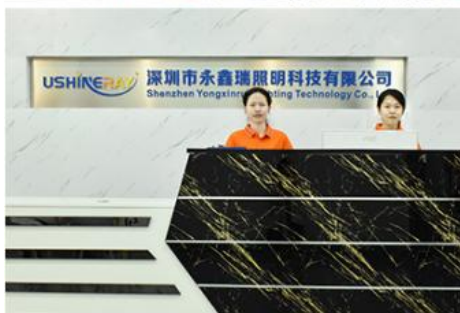
Outdoor sports arena, Outdoor venues, Football field, Tennis court, Hockey field, Rugby pitch, Riding arena, Volleyball court, Outdoor water polo, Training pitch, Training fields, Backyard lighting, Ski resorts, Parking lot, Parking squares and other outdoor lighting places.

## Package



Company Profile

## OUR FACTORY



## Exhibition

Shenzhen Yongxinrui Lighting Technology Co., Ltd



## Guangzhou International Lighting Exhibition



**USHINERAY** Shenzhen Yongxinrui Lighting Technology Co., Ltd.



+8613410523891



joy@ushineray.com



ushineraylight.com

4F, Building C, Junxing Optoelectronic Industrial Park, Fuyuan 2nd Road, FuHai Street, Bao'an District, Shenzhen