

## Module LED Sports Lights 500W Sport Field Lighting For Training Grounds

### Our Product Introduction

for more products please visit us on [ushineraylight.com](http://ushineraylight.com)

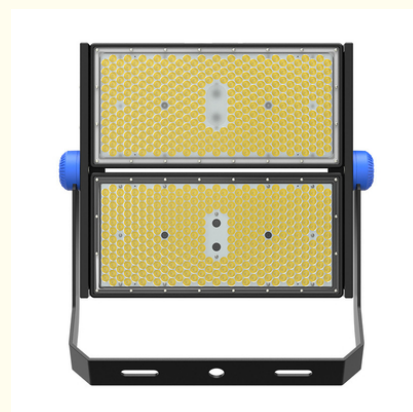
#### Basic Information

- Place of Origin: Shenzhen, China
- Brand Name: UShineray
- Certification: EMC, RoHS, CE, FCC, LVD
- Model Number: YXR-QC-500W-G
- Minimum Order Quantity: 1pcs
- Payment Terms: T/T, Paypal, Western Union



#### Product Specification

- Application: Sports Stadiums
- IP Rating: IP66
- Warranty(Year): 5-Year
- Support Dimmer: Yes
- Lighting Solutions Service: Lighting And Circuitry Design, Onsite Metering, DIALux Evo Layout, LitePro DLX Layout, Auto CAD Layout, Agi32 Layout, Project Installation
- Type: Sport Field Lighting
- Power: 250W/500W/750W/1000W/1250W/1500W/20
- LED Chip: Lumileds 3030
- LED Driver: MOSO, Inventronics, Or Meanwell
- Beam Angle: 15°/30°/40°/60°/90°
- Highlight: **module led sports lights, led sports lights For Training Grounds, 500w sport field lighting**



#### More Images



## Product Description

### Module Design 500W sport field lighting Stadium Light for Training Grounds

Illuminate your training grounds with our 500W modern design sport field lighting. These fixtures combine cutting-edge aesthetics with powerful performance, providing bright and uniform lighting for various training activities. Their contemporary design not only enhances the visual appeal of your facility but also ensures high-quality illumination for athletes.

#### Product Details

**Versatile Power Range:** Offered in power levels from 250W to 2500W to suit a wide range of lighting requirements.

**High Light Output:** Achieves a light efficacy of 150 lm/W, providing high-quality illumination.

**Customizable Beam Angles:** Provides multiple beam angle options (15°, 30°, 45°, 60°, 90°) and a 180° adjustable lamp for tailored lighting.

**Robust Protection:** Features IP66 rating for dust and water resistance and IK08 for impact protection, ensuring durability.

**Laser Sight Feature:** Includes a built-in laser sight for precise aiming and alignment.

**Anti-Glare Option:** Optional anti-glare cover available to enhance visual comfort by minimizing glare.

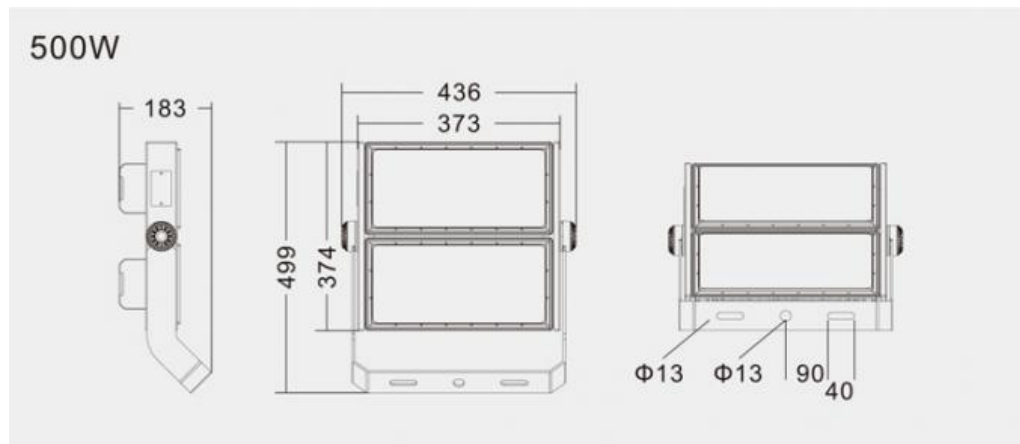
**Lighting Design Tools:** Supports IES files and Dialux simulation for effective lighting design and planning.



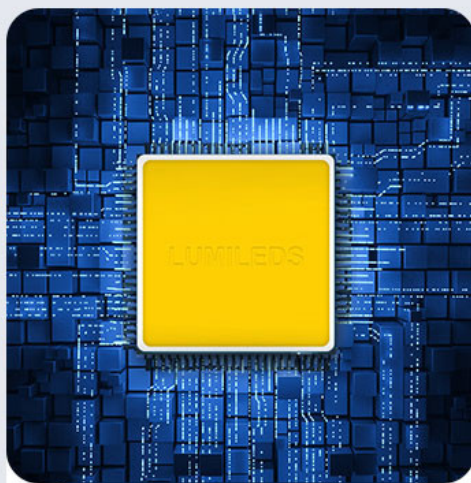
#### Product Parameters

|                     |   |
|---------------------|---|
| Model               | YXR-QC-500W-G                           |
| Power               | 500W                                    |
| Lumens(lm)          | 75000                                   |
| Other Power Options | 250W/750W/1000W/1250W/1500W/2000W/2500W |
| Weight(kg)          | 13.5                                    |
| Sizes(mm)           | 436*499*183                             |
| Efficacy            | 150lm/W                                 |
| CCT                 | 3000-6500K                              |
| CRI                 | ≥70Ra                                   |
| LED Chips           | Lumileds 3030                           |
| PF                  | >0.97                                   |
| Input Voltage       | AC100-277V(Moso)                        |
| Beam Angle          | 15°/30°/40°/60°/90°                     |
| Work Temp           | -35~55°C                                |
| Humidity            | 15%~90% RH, no condensing               |
| Finish              | Sprayed with outdoor special powder     |
| Life Span           | ≥50,000 Hrs (LM70 @ 35°C )              |
| IP Grade            | IP66                                    |
| IK Grade            | IK08                                    |
| Body material       | PC lens + Aluminum housing              |
| Power Wire          | Rubber cable(3*1mm²) L=0.3m             |

## Product Sizes

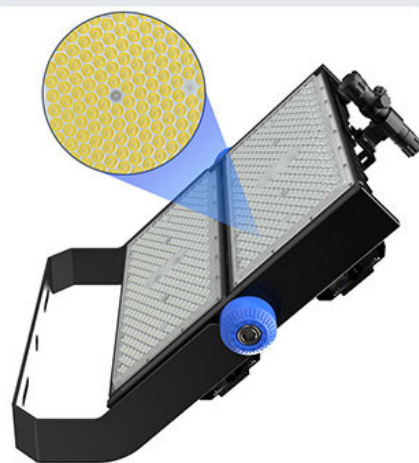


## Product Details



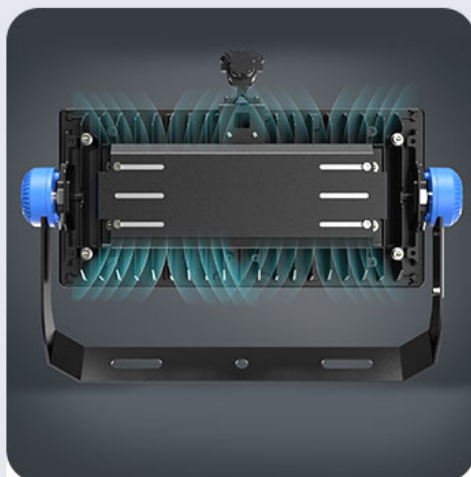
### Light efficiency >140lm/W

Luminous efficiency is more than 140lm/W, or more higher light efficacy can be customized, low decay.



### Professional optical light distribution

With narrow, middle, width beam angle: 15°30°45°60°90°



### Excellent heat dissipation performance

ADC12 die-casting aluminum heat sink, high thermal conductivity aluminum substrate, fast heat dissipation, the efficiency is up to 96W / M.K, reduce light decay.



### The whole lamp IP66 Ingress Protection

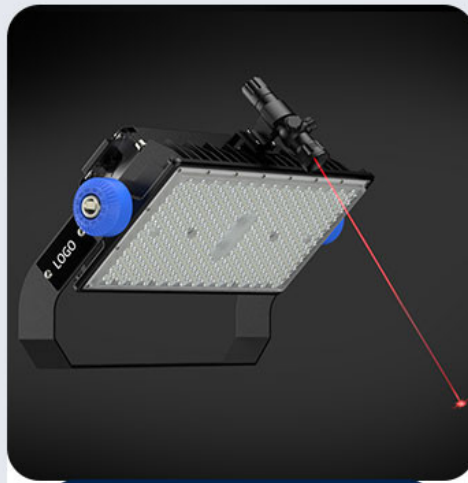
IP67 LED Driver, lamp with silicone waterproof sealing strip, UV-resistant material, reliable without failure.





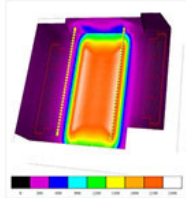
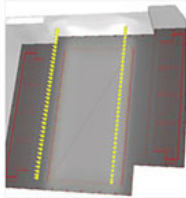
### Brand Driver

Famous brand MOSO Driver or other brand driver is optional, good stability, high efficiency, flicker free, anti-surge.



### Laser sight

Quick-installed laser sight, easily adjust the direction of illumination to achieve maximum lux and uniformity, what's more, it can minimize installation time and lower the labor cost.



### Intelligent dimming system

0~10V, PWM and DALI dimming models are available; Dialux simulation test service can be provided.



### Applications

Outdoor sports arena, Outdoor venues, Football field, Tennis court, Hockey field, Rugby pitch, Riding arena, Volleyball court, Outdoor water polo, Training pitch, Training fields, Backyard lighting, Ski resorts, Parking lot, Parking squares and other outdoor lighting places.

## Applications

Supply Professional Sports Stadiums Lighting Projects Solutions





High brightness, wide lighting area



High cost performance, easy installation

High Brightness LED Stadium Lights



**USHINERAY** Shenzhen Yongxinrui Lighting Technology Co., Ltd.



+8613410523891



joy@ushineray.com



ushineraylight.com

4F, Building C, Junxing Optoelectronic Industrial Park, Fuyuan 2nd Road, FuHai Street, Bao'an District, Shenzhen