

Adjustable 750W Sports Floodlights Stadium Light For Outdoor Concert

Our Product Introduction

for more products please visit us on ushineraylight.com

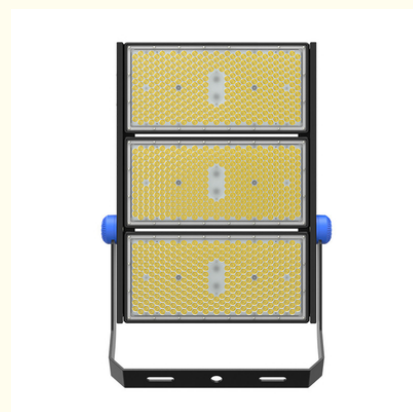
Basic Information

- Place of Origin: Shenzhen, China
- Brand Name: UShineray
- Certification: FCC, LVD, EMC, RoHS, CE
- Model Number: YXR-QC-750W-G
- Minimum Order Quantity: 1pcs
- Payment Terms: T/T, Paypal, Western Union

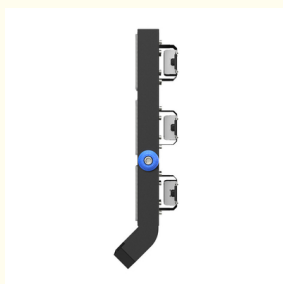


Product Specification

- Application: Outdoor Sports Fields
- IP Rating: IP66 Or IP67
- Intelligent Control: Customized
- Lighting Solutions Service: Lighting And Circuitry Design, Onsite Metering, DIALux Evo Layout, LitePro DLX Layout, Auto CAD Layout, Project Installation
- Power: 250W/500W/750W/1000W/1250W/1500W/20
- LED Chip: Lumileds 3030
- LED Driver: MOSO, Inventronics, Or Meanwell
- Beam Angle: 15°/30°/40°/60°/90°
- Highlight: **750w led sports lights, 750w sports lighting fixtures, stadium led sports lights**



More Images



Product Description

Adjustable 750W sports floodlights Stadium Light for Outdoor Concert

Enhance your outdoor concert experience with our 750W adjustable sports floodlights. These versatile floodlights allow you to customize the lighting angles and intensity to suit different performance needs. Ideal for outdoor events, they provide bright, adjustable illumination, ensuring clear visibility and an impressive atmosphere for concerts and performances.

Product Details

Wide Power Range: Available in sizes from 250W to 2500W, accommodating diverse lighting applications.

Efficient Light Output: Provides a high light efficacy of 150 lm/W, ensuring efficient lighting.

Adjustable Light Angles: Equipped with adjustable beam angles (15°, 30°, 45°, 60°, 90°) and a 180° adjustable lamp for customizable lighting solutions.

Weather and Impact Resistant: Rated IP66 for water and dust resistance and IK08 for impact protection, suitable for challenging environments.

Precision Laser Sight: An integrated laser sight is used for accurate light placement and orientation.

Glare Reduction Option: Optional anti-glare cover to reduce glare and improve lighting quality.

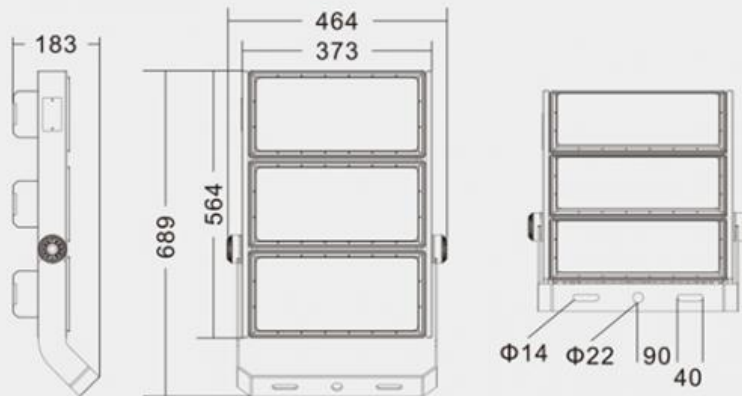
Simulation and Planning: Includes support for IES files and Dialux simulation to aid in lighting design and analysis.

Product Parameters

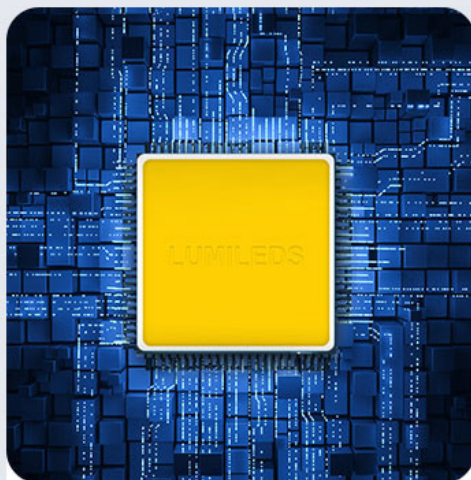
| | |
|-------------------------|---|
| Model | YXR-QC-750W-G |
| Power | 750W |
| Lumens(lm) | 112500 |
| Other Power Options | 250W/500W/1000W/1250W/1500W/2000W/2500W |
| Weight(kg) | 18.7 |
| Sizes(mm) | 464*689*183 |
| Efficacy | 150lm/W |
| CCT | 3000-6500K |
| CRI | ≥70Ra |
| LED Chips | Lumileds 3030 |
| PF | >0.97 |
| Input Voltage | AC100-277V(Moso) |
| Beam Angle | 15°/30°/40°/60°/90° |
| Work Temp | -35~55°C |
| Humidity | 15%~90% RH, no condensing |
| Finish | Sprayed with outdoor special powder |
| Life Span | ≥50,000 Hrs (LM70 @ 35°C) |
| IP Grade | IP66 |
| IK Grade | IK08 |
| Body material | PC lens + Aluminum housing |
| Power Wire | Rubber cable(3*1.5mm²) L=0.3m |
| Electronic safety grade | Class I |

Product Sizes

750W

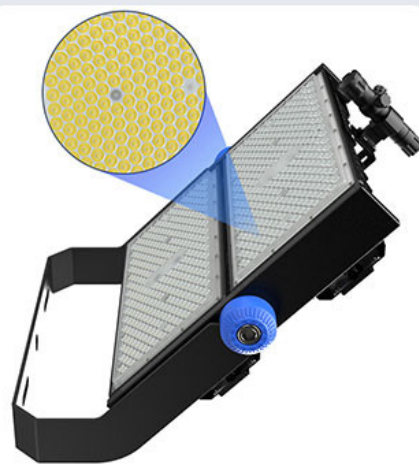


Product Details



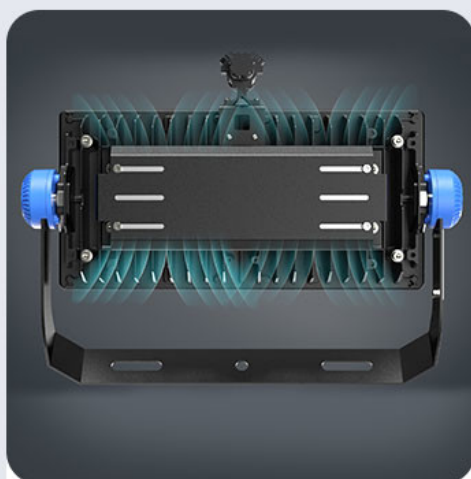
Light efficiency >140lm/W

Luminous efficiency is more than 140lm/W, or more higher light efficacy can be customized, low decay.



Professional optical light distribution

With narrow, middle, width beam angle: 15°30°45°60°90°



Excellent heat dissipation performance

ADC12 die-casting aluminum heat sink, high thermal conductivity aluminum substrate, fast heat dissipation, the efficiency is up to 96W / M.K, reduce light decay.



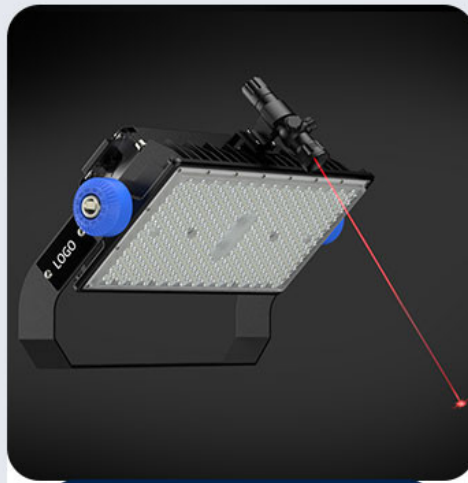
The whole lamp IP66 Ingress Protection

IP67 LED Driver, lamp with silicone waterproof sealing strip, UV-resistant material, reliable without failure.



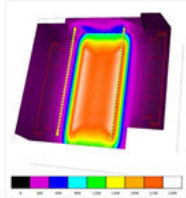
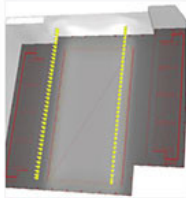
Brand Driver

Famous brand MOSO Driver or other brand driver is optional, good stability, high efficiency, flicker free, anti-surge.



Laser sight

Quick-installed laser sight, easily adjust the direction of illumination to achieve maximum lux and uniformity, what's more, it can minimize installation time and lower the labor cost.



Intelligent dimming system

0~10V, PWM and DALI dimming models are available; Dialux simulation test service can be provided.



Applications

Outdoor sports arena, Outdoor venues, Football field, Tennis court, Hockey field, Rugby pitch, Riding arena, Volleyball court, Outdoor water polo, Training pitch, Training fields, Backyard lighting, Ski resorts, Parking lot, Parking squares and other outdoor lighting places.

Applications

Supply Professional Sports Stadiums Lighting Projects Solutions





High brightness, wide lighting area



High cost performance, easy installation

High Brightness LED Stadium Lights



FAQ

Q1. Are you a manufacturer?

Yes, we have our factory with over 10 years of R&D and manufacturing experience based on ISO quality management since 2011.

Q2. Do you have any MOQ limit for LED light orders?

No MOQ, 1pc for sample checking is available.

Q3. Can I get a lower price for a large quantity of orders?

Yes, please check with our sales staff for the details.

Q4. How about the lead time of ordering?

Our standard sample lead time is 3-5 days, and normal order lead time is 7-10 days. For the large order lead time, please also check with our sales team.

Q5. Can you provide OEM and ODM services?

We can provide OEM and ODM products, with customized label designs on the product and carton box. Or customized carton box, and laser print logo on the lamp fixture.

Q6. What is the payment terms of your formal order?

We accept payment via TT, Paypal, and Western Union, and we offer EXW, FOB, CIF, and CFR terms.

Q7. How to deal with the defective?

All of our products are produced in a strict quality control system, the defective rate is less than 0.2% according to our shipment records. We offer a 3- 5 years warranty for this product, if there is any defective during the warranty, please provide pictures or videos of the working situation of the defective lights, and we will ship the new lights to you within a few days or send it together with your next order.

 **Shenzhen Yongxinrui Lighting Technology Co., Ltd.**



+8613410523891



joy@ushineray.com



ushineraylight.com

4F, Building C, Junxing Optoelectronic Industrial Park, Fuyuan 2nd Road, FuHai Street, Bao'an District,
Shenzhen