

5 Years Warranty 1250W Sport Light Stadium Flood Light For Machine Shop

Our Product Introduction

for more products please visit us on ushineraylight.com

Basic Information

- Place of Origin: Shenzhen, Guangdong
- Brand Name: UShineray
- Certification: EMC, RoHS, CE, FCC, LVD
- Model Number: YXR-QC-1250W-G
- Minimum Order Quantity: 1pcs
- Payment Terms: T/T, Paypal, Western Union

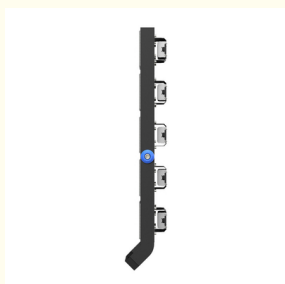


Product Specification

- Application: Football Pitch Sport Lighting
- Support Dimmer: Customized
- Lighting Solutions Service: Lighting And Circuitry Design, Onsite Metering, DIALux Evo Layout, LitePro DLX Layout, Auto CAD Layout, Agi32 Layout, Project Installation
- Power: 250W/500W/750W/1000W/1250W/1500W/20
- LED Chip: San'an/ Lumileds 3030
- LED Driver: MOSO Or As You Want
- Beam Angle: 15°/30°/40°/60°/90°
- Bracket Adjustable.: The Bracket Is Equipped With A Dial, 180°adjustable.
- Highlight: **stadium led sports lights, stadium sports lighting fixtures, 250w led sports lights**



More Images



Product Description

5 Years Warranty 1250W Sport Light Stadium Flood Light For Machine Shop

Illuminate your machine shop with our 1250W stadium flood lights, backed by a 5-year warranty. These high-powered lights are engineered for durability and performance, providing bright and reliable illumination for large areas. Their robust design ensures long-term use in demanding environments, making them an excellent choice for machine shops.

Product Details

Range of Power: Available from 250W to 2500W, catering to different lighting needs and applications.

High Luminous Efficacy: Offers a light efficacy of 150 lm/W for efficient and bright lighting.

Adjustable Beam and Lamp: Provides various beam angles (15°, 30°, 45°, 60°, 90°) with a 180° adjustable lamp for flexible lighting options.

Protection Ratings: IP66 rating for water and dust resistance and IK08 for impact resistance, ensuring reliability in harsh conditions.

Laser Sight Functionality: Includes a laser sight for precise setup and alignment.

Optional Glare Reduction: Can be fitted with an anti-glare cover to minimize glare and enhance lighting quality.

Lighting Simulation Tools: Supports IES files and Dialux for accurate lighting design and planning.

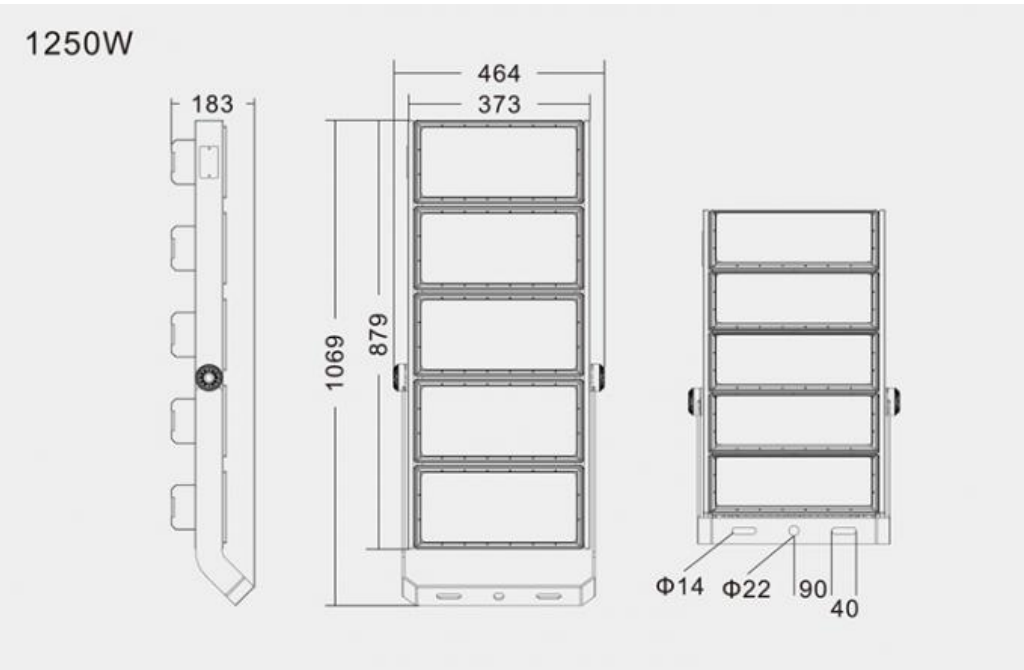


Product Parameters

Model	YXR-QC-1250W-G
Power	1250W
Lumens(lm)	187500
Other Power Options	250W/500W/750W/1000W/1500W/2000W/2500W
Weight(kg)	29.5
Sizes(mm)	464*1069*183
Efficacy	150lm/W
CCT	3000-6500K
CRI	≥70Ra
LED Chips	Lumileds 3030
PF	>0.97
Input Voltage	AC100-277V(Moso)
Beam Angle	15°/30°/40°/60°/90°
Work Temp	-35~55°C
Humidity	15%~90% RH, no condensing
Finish	Sprayed with outdoor special powder
Life Span	≥50,000 Hrs (LM70 @ 35°C)
IP Grade	IP66
IK Grade	IK08
Body material	PC lens + Aluminum housing

Power Wire	Rubber cable(3*1.5mm²) L=0.3m
Electronic safety grade	Class I

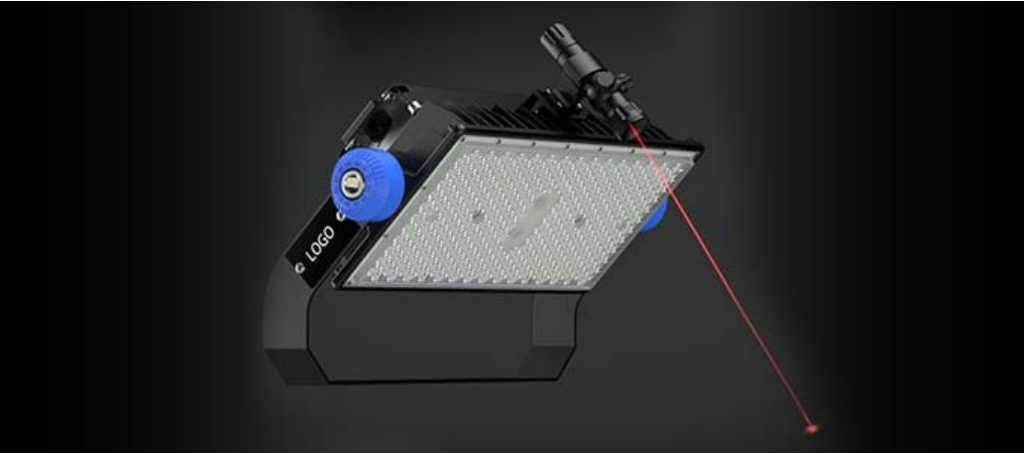
Product Sizes



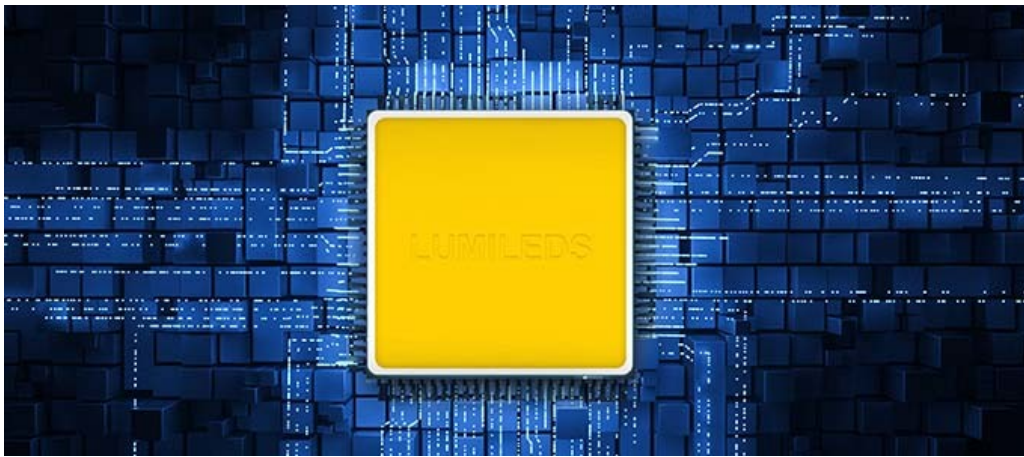
Product Details



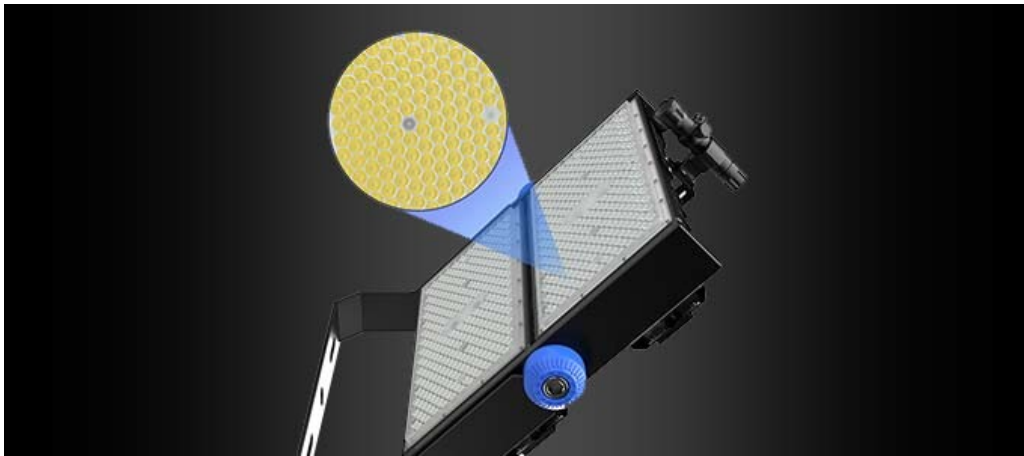
Excellent heat dissipation
ADC12 die-casting aluminum heat sink, high thermal conductivity aluminum substrate, the efficiency is up to 96W/ M.K.



Laser sight available
Quick-installed laser sight easily adjusts the direction of illumination to achieve maximum lux and uniformity.



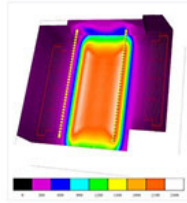
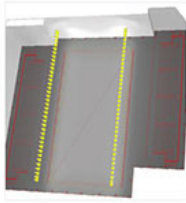
Luminous efficiency 150lm/W \pm 5%
Higher light efficacy can be customized, low decay.



Optical light distribution
With narrow, middle width beam angle: 15° 30° 45° 60° 90°



IP66 Waterproof
IP67 LED Driver, lamp with silicone waterproof sealing strip, UV-resistant material, reliable without failure.



Intelligent dimming system

0~10V, PWM and DALI dimming models are available; Dialux simulation test service can be provided.

Applications

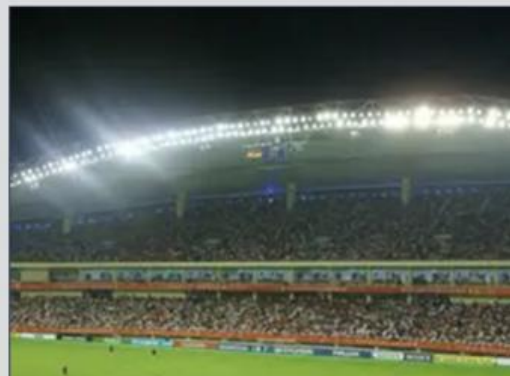
Outdoor sports arena, Outdoor venues, Football field, Tennis court, Hockey field, Rugby pitch, Riding arena, Volleyball court, Outdoor water polo, Training pitch, Training fields, Backyard lighting, Ski resorts, Parking lot, Parking squares and other outdoor lighting places.

Applications

Supply Professional Sports Stadiums Lighting Projects Solutions



High brightness, wide lighting area





High cost performance, easy installation

High Brightness LED Stadium Lights



USHINERAY Shenzhen Yongxinrui Lighting Technology Co., Ltd.

+8613410523891

joy@ushineray.com

ushineraylight.com

4F, Building C, Junxing Optoelectronic Industrial Park, Fuyuan 2nd Road, FuHai Street, Bao'an District, Shenzhen