

1000W LED Sports Lights 15 30 45 Degree Stadium Sport Court Lighting For Architectural Illumination

Our Product Introduction

for more products please visit us on ushineraylight.com

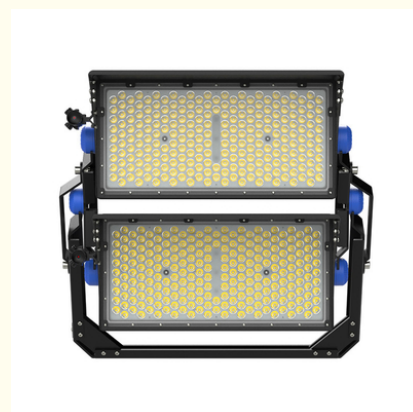
Basic Information

- Place of Origin: Shenzhen, China
- Brand Name: UShineray
- Certification: RoHS, CE, FCC, LVD, VDE
- Model Number: YXR-QC-1000W-K
- Minimum Order Quantity: 1pcs
- Payment Terms: T/T, Paypal, Western Union



Product Specification

- Application: Outdoor Lighting, Construction Lighting
- Beam Angle(°): 15° / 30° / 45° / 60°
- Input Voltage(V): AC100-277V
- Lamp Luminous Flux(lm): 150000
- Warranty(Year): 5-Year
- Lighting Solutions Service: Lighting And Circuitry Design, DIALux Evo Layout, LitePro DLX Layout, Auto CAD Layout, Agi32 Layout
- Product Name: LED Sports Stadium Light
- Power: 1000W
- LED Chip: San'an/Lumileds/SMD 3030
- Material: PC Lens + Aluminum Housing
- Highlight: **1000w led sports lights,**
1000w sports lighting fixtures,
led sports lights For Architectural Illumination



More Images



Product Description

Low Energy Consumption 1000W Stadium Light Sport for Architectural Illumination

This 1000W stadium light is designed with low energy consumption in mind, offering an eco-friendly solution for building illumination. Its energy-efficient LED technology provides bright, uniform light while reducing electricity costs. Ideal for large indoor or outdoor spaces, this light ensures optimal visibility and performance for various applications, from sports events to architectural lighting.

Product Details

The IP67-rated external driver is installed within a custom iron shell, ensuring no direct contact with the lamp body, which provides thermal isolation and extends the lamp's life.

The lamp module allows for precise adjustment, improving the lighting performance at the site.

The lamp's exterior is treated with anti-corrosion and electrophoresis coating for enhanced durability.

Features an IP66 rating for effective dust, moisture, and water resistance.

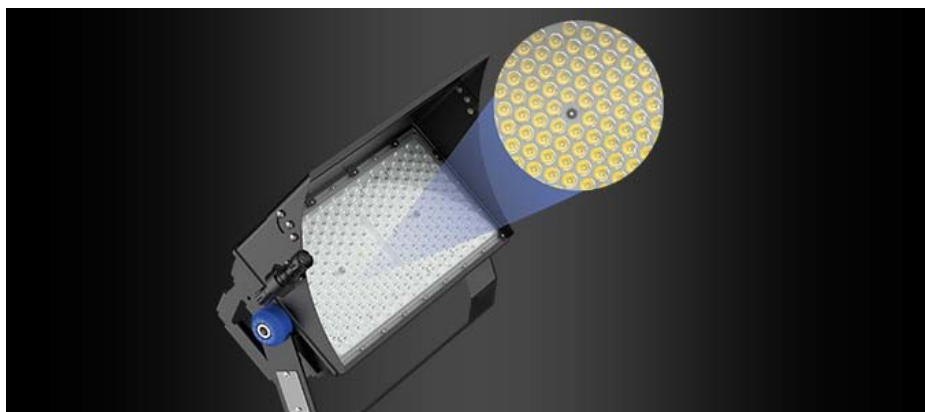
High-quality optical lens ensures even light distribution, a luminous efficacy of 150lm, minimal glare, and extended range.

Supports multiple smart control methods like DALI and DMX, allowing for versatile lighting control.

Product Parameters

Model	YXR-QC-1000W-K
Power	1000W
Lumens(lm)	160000
Other Power Options	500W/1500W/2000W
Weight(kg)	32.6
Sizes(mm)	665*603*574
Efficacy	160lm/W
CCT	3000K-6500K
CRI	≥70Ra
LED Chips	San'an 3030/Lumileds 3030
PF	>0.97
Input Voltage	AC100-277V(Moso)
Beam Angle	15°/ 30° / 45° / 60°
Work Temp	-35~55°C
Humidity	15%~90% RH, no condensing
Finish	Sprayed with outdoor special powder
Life Span	≥50,000 Hrs (LM70 @ 35°C)
IP Grade	IP66
IK Grade	IK08
Body material	PC lens + Aluminum housing
Power Wire	Rubber cable(3*1.5mm²) L=0.3m
Electronic safety grade	Class I

Product Details

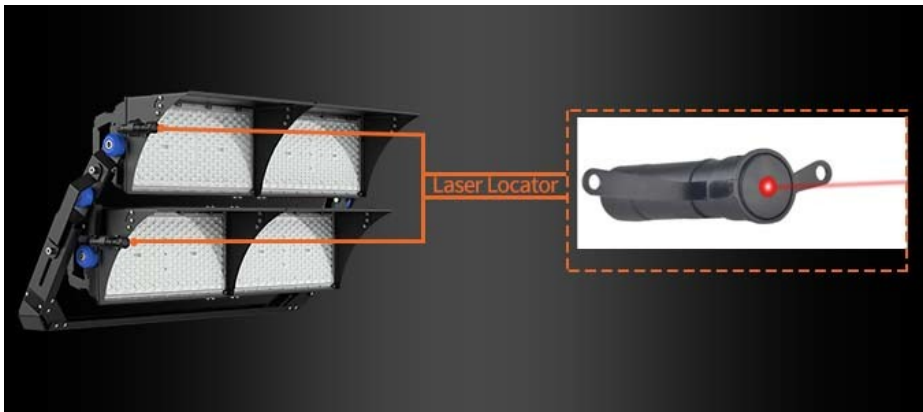


Optical light distribution

With narrow, middle width beam angle: 15° 30° 45° 60° 90°.



Luminous efficiency
150lm/W Higher light efficacy can be customized, low decay.



Laser sight
Quick-installed laser sight, easily adjusts the direction of illumination to achieve maximum lux and uniformity.



Brand Driver
Famous brand Moso driver or other brand driver optional, good stability, high efficiency, flicker free, anti-surge.



180° adjustable.
The bracket is equipped with a dial, 180° adjustable.



Lamp IP66 Waterproof
IP67 LED Driver with silicone waterproof sealing strip, UV-resistant material, reliable without failure.

Applications



FAQ

Q1. Are you a manufacturer?

Yes, we have our factory with over 10 years of R&D and manufacturing experience based on ISO quality management since 2011.

Q2. Do you have any MOQ limit for LED light orders?

No MOQ, 1pc for sample checking is available.

Q3. Can I get a lower price for a large quantity of orders?

Yes, please check with our sales staff for the details.

Q4. How about the lead time of ordering?

Our standard sample lead time is 3-5 days, and normal order lead time is 7-10 days. For the large order lead time, please also check with our sales team.

Q5. Can you provide OEM and ODM services?

We can provide OEM and ODM products, with customized label designs on the product and carton box. Or customized carton box, and laser print logo on the lamp fixture.

Q6. What is the payment terms of your formal order?

We accept payment via TT, Paypal, and Western Union, and we offer EXW, FOB, CIF, and CFR terms.

Q7. How to deal with the defective?

All of our products are produced in a strict quality control system, the defective rate is less than 0.2% according to our shipment records. We offer a 3- 5 years warranty for this product, if there is any defective during the warranty, please provide pictures or videos of the working situation of the defective lights, and we will ship the new lights to you within a few days or

send it together with your next order.

USHINERAY Shenzhen Yongxinrui Lighting Technology Co., Ltd.



+8613410523891



joy@ushineray.com



ushineraylight.com

4F, Building C, Junxing Optoelectronic Industrial Park, Fuyuan 2nd Road, FuHai Street, Bao'an District,
Shenzhen