

Super Bright Athletic Field Lighting 1500W Led Sport Lighting For Industrial Illumination

Our Product Introduction

for more products please visit us on ushineraylight.com

Basic Information

- Place of Origin: Shenzhen, China
- Brand Name: UShineray
- Certification: RoHS, CE, FCC, LVD, VDE
- Model Number: YXR-QC-1500W-K
- Minimum Order Quantity: 1pcs
- Payment Terms: T/T, Paypal, Western Union

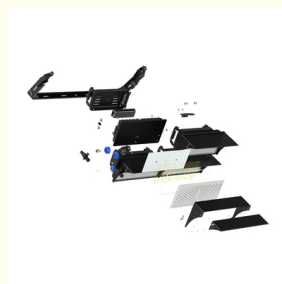


Product Specification

- Application: Sports Lighting, Industrial Lighting
- Beam Angle(°): 15° / 30° / 45° / 60°
- Input Voltage(V): AC100-277V
- Lamp Luminous Flux(lm): 225000
- Warranty(Year): 5-Year
- Lighting Solutions Service: Lighting And Circuitry Design, DIALux Evo Layout, LitePro DLX Layout, Auto CAD Layout, Agi32 Layout
- Product Name: 1500W Sports Stadium Light
- Power: 1500W
- LED Chip: San'an/Lumileds/SMD 3030
- Material: PC Lens + Aluminum Housing
- Highlight: **led sport lighting for industrial illumination , 1500w led sport lighting, sport field lighting For Industrial Illumination**



More Images



Product Description

Super Bright 1500W Lighting Stadium Sport Light for Industrial Illumination

Engineered for industrial settings, this 1500W LED stadium light delivers exceptional brightness for comprehensive illumination. It is designed to meet the demanding needs of industrial environments, providing intense light output for enhanced visibility and safety. Its durable construction and high lumen output make it suitable for large-scale industrial applications and sporting events where high-performance lighting is required.

Product Details

The external IP67 driver is positioned in a specially designed iron shell, keeping it separate from the lamp body to ensure thermal separation and a longer operational life.

Single lamp modules are finely adjustable to optimize the lighting parameters at the site.

The lamp's surface is protected by anti-corrosion and electrophoresis treatments to enhance its lifespan.

The lamp boasts IP66-rated protection against dust, moisture, and water.

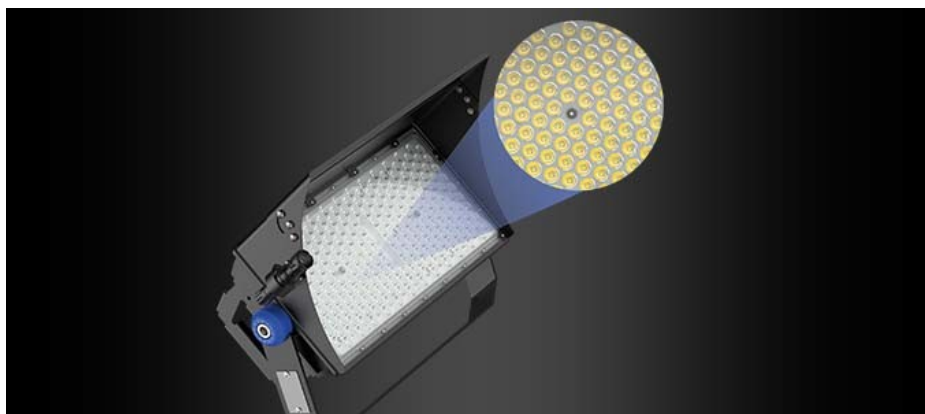
Advanced optical lens design provides uniform light spots, high light efficacy of 150lm, low glare, and long-distance illumination.

Features intelligent control capabilities such as DALI and DMX for flexible and precise lighting management.

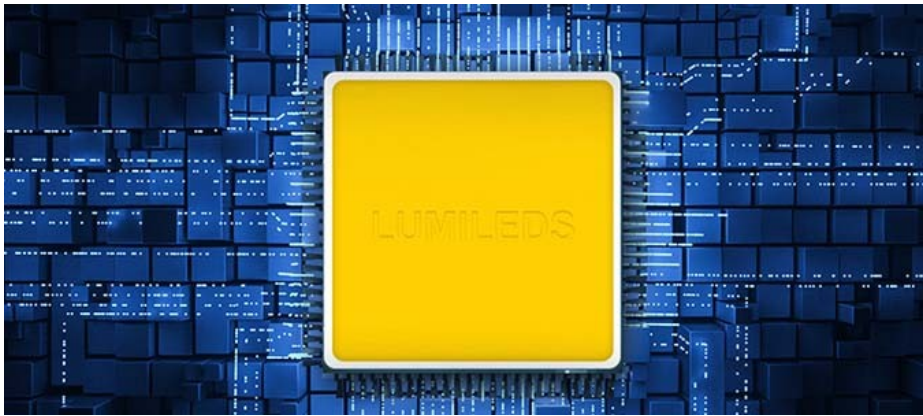
Product Parameters

Model	YXR-QC-1500W-K
Power	1500W
Lumens(lm)	240000
Other Power Options	500W/1000W/2000W
Weight(kg)	47.6
Sizes(mm)	665*885*811
Efficacy	160lm/W
CCT	3000K-6500K
CRI	≥70Ra
LED Chips	San'an 3030/Lumileds 3030
PF	>0.97
Input Voltage	AC100-277V(Moso)
Beam Angle	15° / 30° / 45° / 60°
Work Temp	-35~55°C
Humidity	15%~90% RH, no condensing
Finish	Sprayed with outdoor special powder
Life Span	≥50,000 Hrs (LM70 @ 35°C)
IP Grade	IP66
IK Grade	IK08
Body material	PC lens + Aluminum housing
Power Wire	Rubber cable(3*1.5mm²) L=0.3m
Electronic safety grade	Class I

Product Details



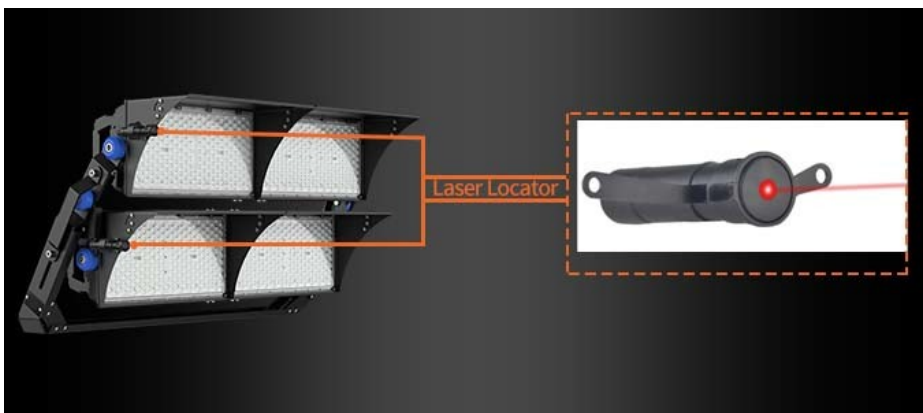
Optical light distribution
With narrow, middle width beam angle: 15° 30° 45° 60° 90°.



Luminous efficiency
150lm/W Higher light efficacy can be customized, low decay.



Brand Driver
Famous brand Moso driver or other brand driver optional, good stability, high efficiency, flicker free, anti-surge.



Laser sight
Quick-installed laser sight, easily adjusts the direction of illumination to achieve maximum lux and uniformity.



180° adjustable.
The bracket is equipped with a dial, 180° adjustable.

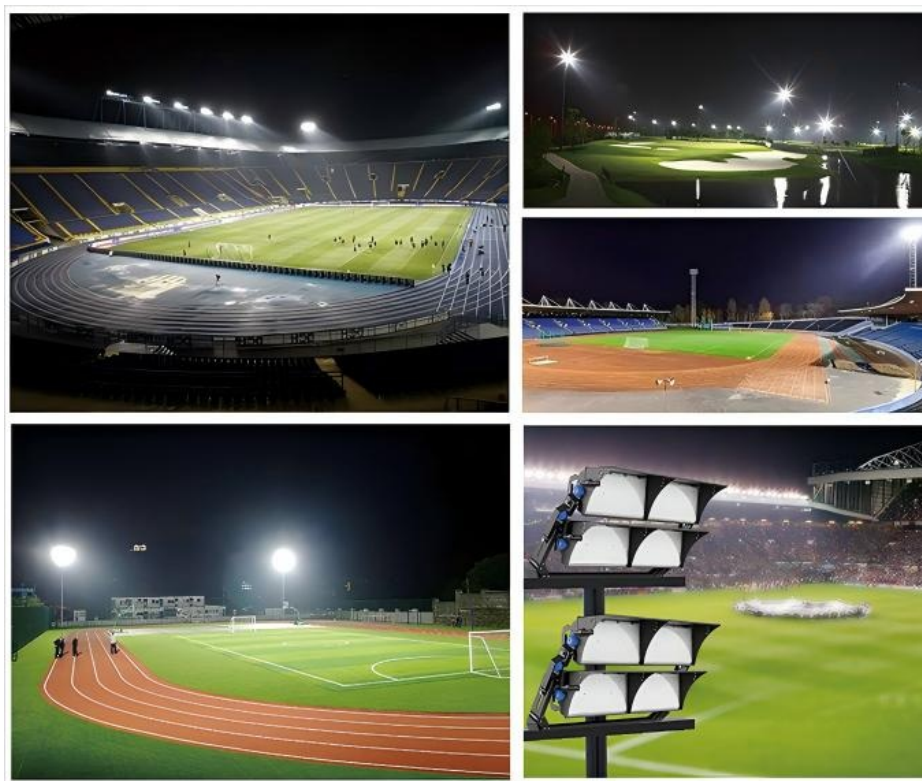


Lamp IP66 Waterproof
IP67 LED Driver with silicone waterproof sealing strip, UV-resistant material, reliable without failure.

Applications

Sports lighting area: football field, cricket stadium, badminton court, basketball court, baseball field, tennis court, table tennis field, racetrack.

High pole lighting area: mining area, outdoor construction area, mobile tower lighting.



FAQ

Q1. Are you a manufacturer?

Yes, we have our factory with over 10 years of R&D and manufacturing experience based on ISO quality management since 2011.

Q2. Do you have any MOQ limit for LED light orders?

No MOQ, 1pc for sample checking is available.

Q3. Can I get a lower price for a large quantity of orders?

Yes, please check with our sales staff for the details.

Q4. How about the lead time of ordering?

Our standard sample lead time is 3-5 days, and normal order lead time is 7-10 days. For the large order lead time, please also check with our sales team.

Q5. Can you provide OEM and ODM services?

We can provide OEM and ODM products, with customized label designs on the product and carton box. Or customized carton box, and laser print logo on the lamp fixture.

Q6. What is the payment terms of your formal order?

We accept payment via TT, Paypal, and Western Union, and we offer EXW, FOB, CIF, and CFR terms.

Q7. How to deal with the defective?

All of our products are produced in a strict quality control system, the defective rate is less than 0.2% according to our shipment records. We offer a 3- 5 years warranty for this product, if there is any defective during the warranty, please provide pictures or videos of the working situation of the defective lights, and we will ship the new lights to you within a few days or send it together with your next order.

USHINERAY Shenzhen Yongxinrui Lighting Technology Co., Ltd.



+8613410523891



joy@ushineray.com



ushineraylight.com

4F, Building C, Junxing Optoelectronic Industrial Park, Fuyuan 2nd Road, FuHai Street, Bao'an District,
Shenzhen