

## 1500W 1000w High Lumen Led Flood Stadium Football Lighting For Refinery

### Our Product Introduction

for more products please visit us on [ushineraylight.com](http://ushineraylight.com)

#### Basic Information

- Place of Origin: China
- Brand Name: UShineray
- Certification: FCC CE RoHS
- Model Number: YXR-QC-1500W-M
- Minimum Order Quantity: 1pcs
- Packaging Details: 1 pcs in an inner box  
Size: 61\*41\*28CM  
G.W: 18.5KG
- Payment Terms: T/T, Paypal, Western Union
- Supply Ability: 1500 Piece/Pieces per Week

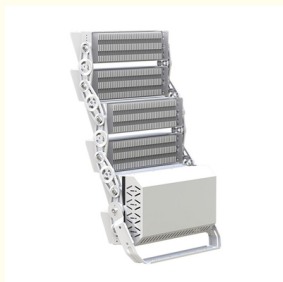


#### Product Specification

- Lamp Luminous Efficiency(lm/w): >150lm Per Watt
- Support Dimmer: Yes
- Lighting Solutions Service: Lighting And Circuitry Design, DIALux Evo Layout, LitePro DLX Layout, Auto CAD Layout, Project Installation
- Working Time (hours): 50000
- Lamp Luminous Flux(lm): 225000
- Color Temperature(CCT): 3000-6500K
- Lamp Body Material: Aluminum Alloy
- Warranty(Year): 5-Year
- Power: 1500W
- Applications: Parking Lot, Squire, Sports Stadium
- Color: Gray Or Black
- OEM/ODM: Yes
- Highlight: 1000w high lumen led, stadium football lighting ,



#### More Images



## Product Description

### High Lumen Output 1500W 1000W LED Flood Light for Refinery

With a high lumen output of 1500W, this LED flood light is designed for use in refineries. It provides powerful, bright illumination to ensure optimal lighting for industrial environments. The 1000W LED technology offers excellent efficiency and reliability, making it suitable for large-scale operations and enhancing safety in refinery settings.

### Product Details

Offers a high light efficacy of 150lm/W for optimal brightness.

The anti-UV lens maintains its clarity under direct sunlight and prevents yellowing.

Light shield covers are designed to reduce light pollution and waste effectively.

Lightweight with a finned pure aluminum radiator, reducing overall weight by 60% and increasing heat dissipation surface area by 40%.

Modular configuration allows each module to be adjusted 270° and pairs of modules 180°, with a 90° adjustable mounting bracket for enhanced flexibility.

Minimum beam angle of 8° enables high lux levels with fewer fixtures, ensuring even and efficient ground illumination.

### Product Parameters

Model	YXR-QC-1500W-M
Power	1500W
Lumens(lm)	225000
Other Power Options	240W/480W/720W/960W/1200W
Weight(kg)	22.1
Sizes(mm)	928*587*180
Efficacy	150lm/W
CCT	3000-6500K
CRI	≥70Ra
LED Chips	Sanan 5050/Lumileds 5050
PF	>0.97
Input Voltage	AC100-277V(Moso)
Beam Angle	20°/40°/60°/90°/140°/100°
Work Temp	-35~55℃
Humidity	15%~90% RH, no condensing
Finish	Sprayed with outdoor special powder
Life Span	≥50,000 Hrs (LM70 @ 35℃ )
IP Grade	IP66
IK Grade	IK08
Body material	PC lens + Aluminum housing
Power Wire	Rubber cable(3*1.5mm²) L=0.3m
Electronic safety grade	Class I

### Product Details

# LED STADIUM LIGHT

— High lumen and high CRI —

CE FC RoHS



## LED Stadium Light

Beam angle: 8°, 20°, 40°, 60°, 90°, 100°\*140°, P50

Power: 240W, 480W, 720W, 960W, 1200W, 1440W

160  
lm/W

Pa>80

IP66

IK08

240W-1440W Lumen output from  
40800lm up to 244800lm



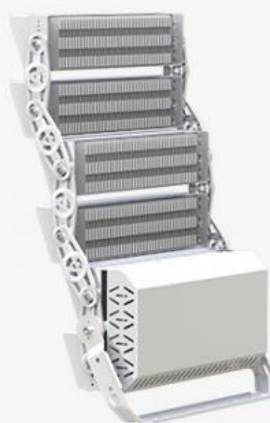
IP66 waterproof



Excellent heat  
dissipation



High Lumen  
Efficiency



### Folding heat sink

Three -sided ventilation  
design to increase the  
heat dissipation area  
and improve the heat  
dissipation efficiency.



### The lamp body is made of al1060 material

Surface silver spraying  
process, rust -proof  
anti-corrosion corrosion.



### Multiple beam angle lens optional

Symmetrical 8° to  
90° optional and  
asymmetrical 140°\*100  
P50 is available, to  
meet different lighting  
requirements.



### Anti-glare reflectors (optional accessories)

Help to improve  
for a comfortable  
environment, friendly  
for eyes, Improve  
audience experience.



#### ► Modular design

Single module can be 270° adjustable, 2 modules 180° adjustable and the fixing bracket can be adjusted 90°.



#### ► Integrated stent design

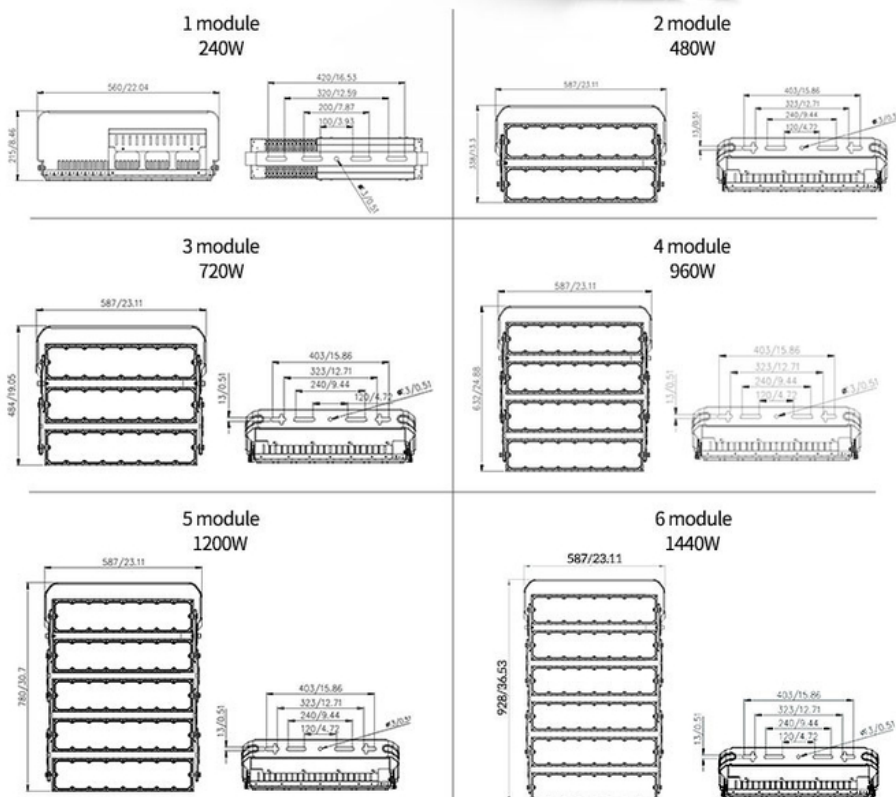
The installation is stronger, and the use is more assured.



## IP66 Waterproof

Equipped with silicone waterproof ring, integrated waterproof lens. IP66 waterproof and dust-proof, no fear of harsh environment.

### Products Sizes

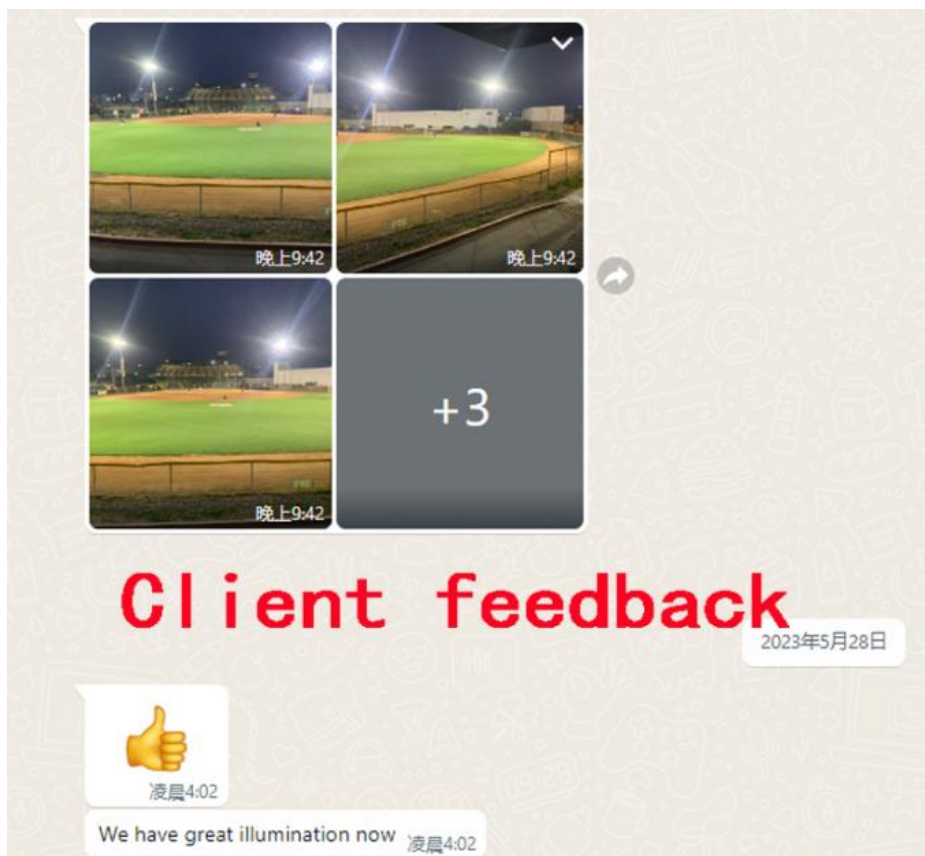


### Applications

Soccer field, Tennis court, Golf courses, Badminton court, Sport football Stadium, Driving Range, Hockey Rink, Hockey Field, Cricket Stadium, Natatorium, Horse Arena, Racetrack, Pickleball Court, Skate Park, Baseball Field, Softball Field, Rugby Field, Sports field construction, Industrial Bridge, Crane, Container Port, Airport, Billboard, Mining, Public Park etc.

### Feedbacks





## Company Profile

# OUR FACTORY

COMPANY POWER & UNIQUE STRENGTHS





## FAQ

### Q1: Are you a manufacturer ?

USHINERAY: Yes, we have our own factory with over 14 years R&D and manufacture experience base on ISO quality management since 2009.

### Q2. Can I have a sample order for LED Stadium Light?

USHINERAY: Yes, sample order is always welcomed.

### Q3. How about the lead time of LED Stadium Light ?

USHINERAY: 5-7 days for sample order, 10-20 days for mass production order base on order quantities.

### Q4: How do you ship the finished production ?

USHINERAY: By SEA, AIR or Express(DHL,UPS,Fedex,TNT,etc) are optional.

### Q5: Is it OK to print my logo on LED Stadium Light ?

USHINERAY: Yes, we offer screen printing or laser printing

### Q6: How to proceed an order for LED Stadium Light ?

USHINERAY: Firstly, send your detail requirement and application environment, secondly we will recommend some suitable products and solutions to you according to your request. Thirdly, after confirm all the details, you can issue the purchase order

and make the payment , then we start for the production and arrange the shipment.

**Q7: How to deal with the defective?**

USHINERAY: All of our product are produced in strict quality control system, the defective rate is less than 0.2% according to our shipment records. We offer 5 years warranty, if there is any defective during the warranty, please provide the picture or video, we will ship the new lights to you within a few days or send it together with your next order.

 **Shenzhen Yongxinrui Lighting Technology Co., Ltd.**



+8613410523891



joy@ushineray.com



ushineraylight.com

4F, Building C, Junxing Optoelectronic Industrial Park, Fuyuan 2nd Road, FuHai Street, Bao'an District,  
Shenzhen