

Dimming 500W LED High Mast Light 277V Sports Flood Lights For Park Squares

Our Product Introduction

Basic Information

- Place of Origin: Guangdong, China
- Brand Name: UShineray
- Certification: RoHS, CE, FCC, LVD
- Model Number: YXR-QC-500W-S
- Minimum Order Quantity: 1pcs
- Payment Terms: T/T, Paypal, Western Union



Product Specification

- Lumen: 75000lm
- Beam Angle(°): 15°/30°/60°/90° (asymmetrical 45°)
- Input Voltage(V): AC100-277V
- Warranty(Year): 5-Year
- Light Source: LED
- Intelligent Control: Available
- Lighting Solutions Service: Lighting And Circuitry Design, DIALux Evo Layout, LitePro DLX Layout, Auto CAD Layout, Agi32 Layout
- Type: Sports Flood Light
- LED Chip: San'an/Lumileds/SMD 3030/3535/5050
- CCT: 2700K-6500K
- Highlight: 500w led high mast light,
277v sports flood lights,
led high mast light 277v



Product Description

Dimming Capabilities 500W Sports Flood Lights High Mast Light for Park Squares

Our 500W sports flood lights are perfect for park squares, featuring advanced dimming capabilities for adjustable brightness. These high mast lights provide powerful and efficient illumination, ensuring optimal visibility for various activities. Their versatile design makes them an excellent choice for public park lighting.

Product Features

Employs high-power LED chips (3030/5050) to deliver high-intensity lighting.

Compatible with any brand's power supply for seamless operation.

Select from beam angles of 15°, 30°, 60°, 90°, or an asymmetrical 45° for tailored lighting solutions.

Laser sight feature included for accurate and efficient targeting.

Anti-glare cover can be added to reduce visual discomfort.

Equipped with IES file and Dialux simulation support for detailed lighting planning.

IP66 rated for superior protection against dust and water, and IK08 rated for impact resistance.

Product Parameters

Power	500W
Lumens(lm)	75000
Other Power Options	250W / 300W / 600W / 750W / 1000W / 1200W / 1500W / 2000W
Weight(kg)	22.2
Sizes(mm)	584*553*267
Efficacy	150lm/W
CCT	2700-6500K
CRI	≥70Ra
LED Chips	San'an 3030/Lumileds 5050
PF	>0.95
Input Voltage	AC100-277V(Moso)
Beam Angle	15°/30°/60°/90°/asymmetrical 45°
Work Temp	-35~55°C
Humidity	15%~90% RH, no condensing
Finish	Sprayed with outdoor special powder
Life Span	50000hrs
IP Grade	IP66
IK Grade	IK08
Body material	PC lens + Aluminum housing
Power Wire	Rubber cable(3*1mm ²) L=0.3m
Electronic safety grade	Class I

Product Details

LED STADIUM LIGHT

250W~2000W

— Equipped with laser sight, anti-glare cover can be added



REASONS TO CHOOSE US



High brightness



IP66 Waterproof



IES test report



High quality



Simple installation



Quality assurance

LED Stadium Light

Beam angle: 15°/30°/60°/90°/Asymmetrical 45°.

Power: 250W~2000W

The whole lamp
180°
adjustable

Light efficacy
150
lm/W

Impact grade
IK08

Ingress protection
IP66

250W-2000W Lumen output from
37500lm up to 300000lm





Black



Silver

Product details



250W-300W



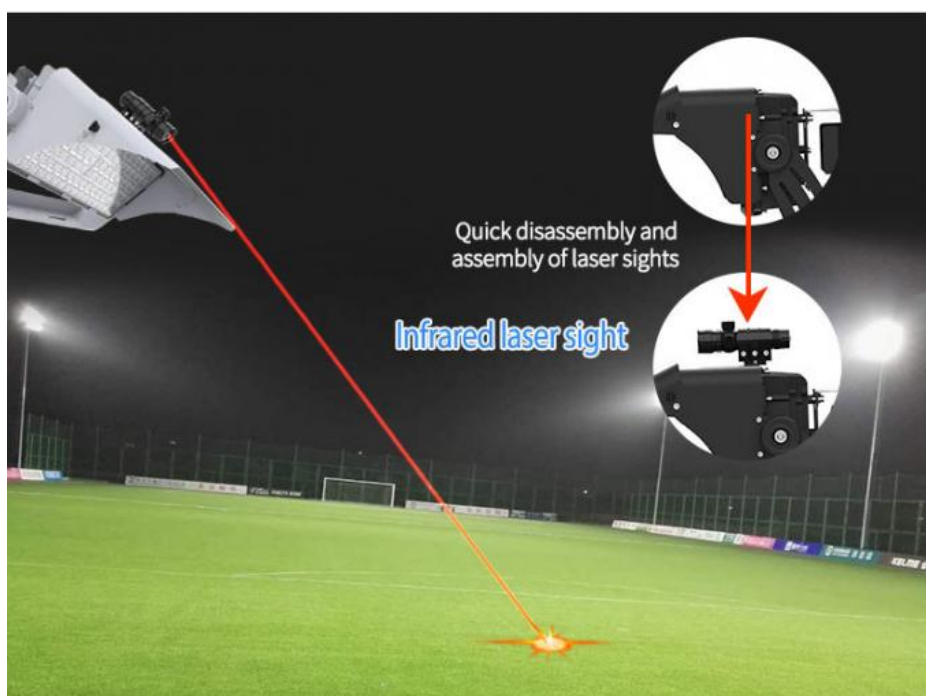
500W-600W



750W-1000W



1200W



MORE DETAILS



Light efficiency >160lm/W

Luminous efficiency is more than 160lm/W, or more higher light efficacy can be customized, low decay.



Professional optical light distribution

Beam angles: 15°/30°/60°/90°
/ Asymmetrical 45°.



Brand Driver

Famous brand Inventronics driver or other brand driver is optional, good stability, high efficiency, flicker free, anti-surge.



Excellent heat dissipation performance

ADC12 die-casting aluminum heat sink, high thermal conductivity aluminum substrate, fast heat dissipation, the efficiency is up to 96W / MK, reduce light decay.



The whole lamp IP66 Ingress Protection

IP67 LED Driver, lamp with silicone waterproof sealing strip, UV-resistant material, reliable without failure.

CRI CONTRAST

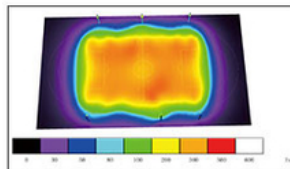
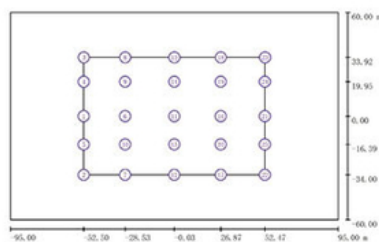
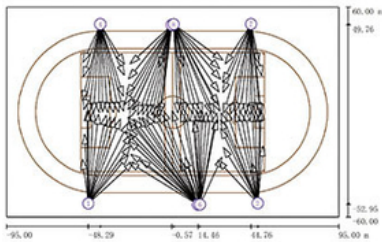


USHINERAY LED CRI $\geq 80Ra$

OTHER LED CRI $\geq 70Ra$

Providing LED energy-saving

Program free lighting consultation; lighting and circuitry design; DIALux calculation and visualization; Auto CAD layout.



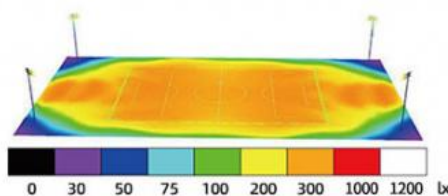
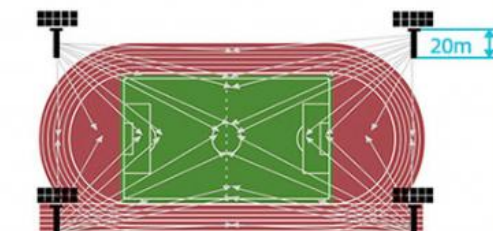
300W 250	7	44.761	50.308	20.000	33.223	-1.047	0.000
300W 250	7	44.761	50.308	20.000	28.443	-1.881	0.000
300W 250	7	44.761	50.308	20.000	29.869	27.536	0.000
300W 250	7	44.761	50.308	20.000	41.308	-0.779	0.000
300W 250	7	44.761	50.308	20.000	47.414	-0.417	0.000
300W 250	7	44.761	50.308	20.000	28.443	11.296	0.000
300W 250	7	44.761	50.308	20.000	43.350	-0.430	0.000
300W 250	7	44.761	50.308	20.000	38.406	-0.690	0.000
300W 250	7	44.761	50.308	20.000	33.223	-1.047	0.000
300W 250	7	44.761	50.308	20.000	28.443	18.881	0.000
300W 250	7	44.761	50.308	20.000	29.869	27.536	0.000
300W 250	7	44.761	50.308	20.000	41.308	-0.779	0.000
300W 250	7	44.761	50.308	20.000	47.414	-0.417	0.000

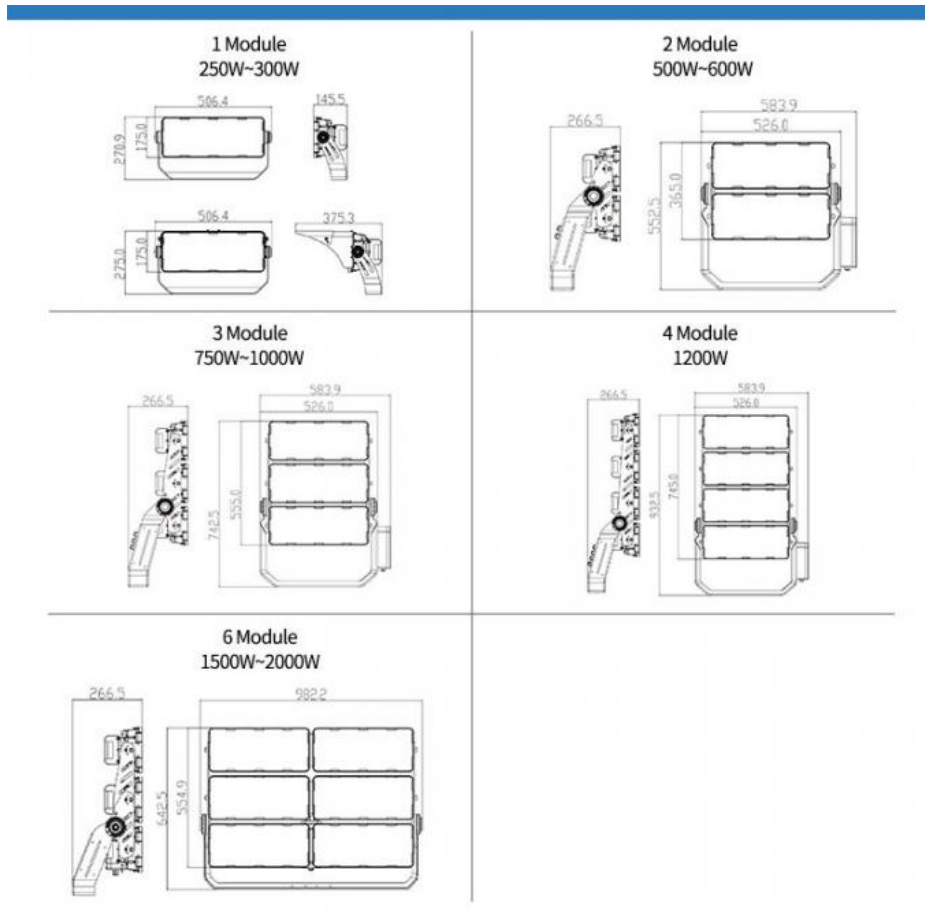
Reference Scheme for Stadium Lighting

Lighting design	Training Ground
Competition area	Eave>300lx U>0.7
Assemble competition area	Eave>200lx U>0.5
Lamp pole	4 poles and 40 lamps, with a height of 20m



LED Stadium Light
(1000W)





Applications



Our flood light are widely applied to building, factory, storage room, parking lot, exhibition hall, domestic block, gymnasium, gas station, square, advertise, lawn, super market wharf and so on.
We may be able to accommodate your special projects, so please don't hesitate to ask about additional options.

Exhibition

Shenzhen Yongxinrui Lighting Technology Co., Ltd



Guangzhou International Lighting Exhibition



PRODUCTION SITE





USHINERAY Shenzhen Yongxinrui Lighting Technology Co., Ltd.

+8613410523891

joy@ushineray.com

ushineraylight.com

4F, Building C, Junxing Optoelectronic Industrial Park, Fuyuan 2nd Road, FuHai Street, Bao'an District,
Shenzhen