

Low Carbon Emission LED High Mast Light 750W Industrial Flood Lights For Harbor

Our Product Introduction

for more products please visit us on ushineraylight.com

Basic Information

- Place of Origin: Guangdong, China
- Brand Name: USHineray
- Certification: RoHS, CE, FCC, LVD
- Model Number: YXR-QC-750W-S
- Minimum Order Quantity: 1pcs
- Payment Terms: T/T, Paypal, Western Union



Product Specification

- Lumen: 112500lm
- Beam Angle(°): 15°/30°/60°/90° (asymmetrical 45°)
- Driver: Moso Or Other Brand Driver Optional
- Warranty(Year): 5-Year
- Light Source: LED
- Intelligent Control: Available
- Lighting Solutions Service: Lighting And Circuitry Design, DIALux Evo Layout, LitePro DLX Layout, Auto CAD Layout, Agi32 Layout
- Type: Sports Flood Light
- LED Chip: San'an/Lumileds/SMD 3030/3535/5050
- CCT: 2700K-6500K Optional
- Highlight: **industrial led high mast light**



Product Description

Low Carbon Emission 750W Industrial Flood Lights Outdoor for Harbor

Designed for outdoor harbor lighting, our 750W industrial flood lights offer low carbon emissions, contributing to a greener environment. These lights provide powerful and efficient illumination, enhancing safety and visibility in harbor areas. Their robust design ensures long-lasting performance in demanding outdoor conditions.

Product Features

Incorporates high-power LED chips (3030/5050) for powerful and efficient lighting.

Compatible with a variety of power supplies, regardless of brand.

Offers adjustable beam angles: 15°, 30°, 60°, 90°, and a unique asymmetrical 45°.

Laser sight included for improved precision and targeting.

Anti-glare cover available to reduce glare and improve light quality.

Provides support for IES files and Dialux simulations for detailed lighting analysis.

Features IP66 ingress protection and IK08 impact resistance for robust performance.

Product Parameters

Power	750W
Lumens(lm)	112500
Other Power Options	250W / 300W / 500W / 600W / 1000W / 1200W / 1500W / 2000W
Weight(kg)	30.2
Sizes(mm)	743*584*267
Efficacy	150lm/W
CCT	2700-6500K
CRI	≥70Ra
LED Chips	San'an 3030/Lumileds 5050
PF	>0.95
Input Voltage	AC100-277V(Moso)
Beam Angle	15°/30°/60°/90°/asymmetrical 45°
Work Temp	-35~55°C
Humidity	15%~90% RH, no condensing
Finish	Sprayed with outdoor special powder
Life Span	50000hrs
IP Grade	IP66
IK Grade	IK08
Body material	PC lens + Aluminum housing
Power Wire	Rubber cable(3*1mm ²) L=0.3m
Electronic safety grade	Class I

Product Details

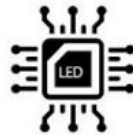
LED STADIUM LIGHT

250W~2000W

— Equipped with laser sight, anti-glare cover can be added



REASONS TO CHOOSE US



High brightness



IP66 Waterproof



IES test report



High quality



Simple installation



Quality assurance

LED Stadium Light

Beam angle: 15°/30°/60°/90°/Asymmetrical 45°.

Power: 250W~2000W

The whole lamp	Light efficacy	Impact grade	Ingress protection
180° adjustable	150 lm/W	IK08	IP66

250W-2000W Lumen output from 37500lm up to 300000lm





Black



Silver

Product details



250W-300W



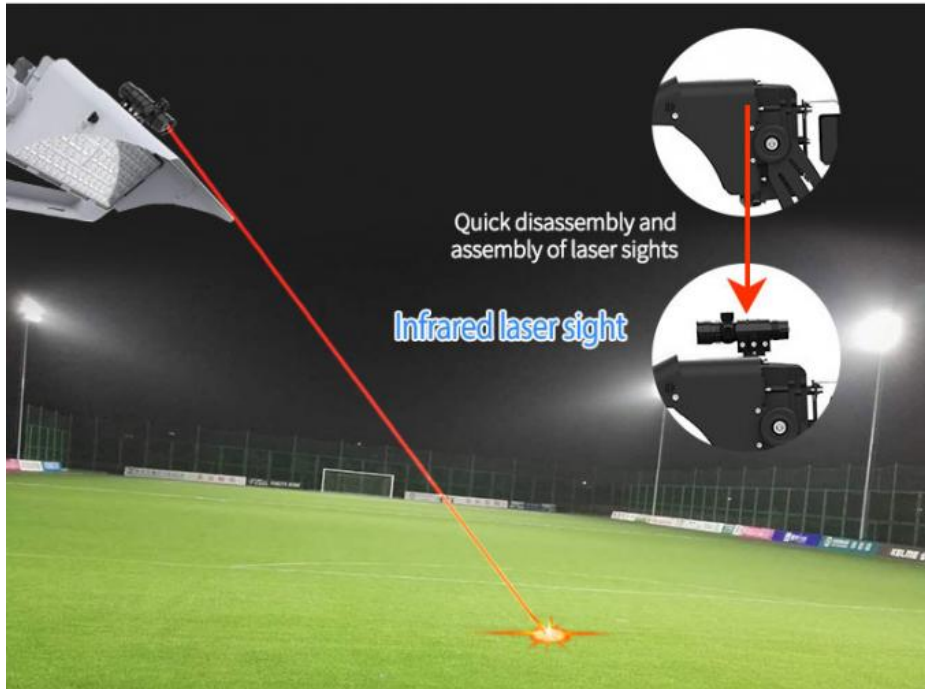
500W-600W



750W-1000W



1200W



MORE DETAILS



Light efficiency >160lm/W

Luminous efficiency is more than 160lm/W, or more higher light efficacy can be customized, low decay.



Professional optical light distribution

Beam angles: 15°/30°/60°/90° / Asymmetrical 45°.



Brand Driver

Famous brand Inventronics driver or other brand driver is optional, good stability, high efficiency, flicker free, anti-surge.



Excellent heat dissipation performance

ADC12 die-casting aluminum heat sink, high thermal conductivity aluminum substrate, fast heat dissipation, the efficiency is up to 96W / MK, reduce light decay.



The whole lamp IP66 Ingress Protection

IP67 LED Driver, lamp with silicone waterproof sealing strip, UV-resistant material, reliable without failure.

CRI CONTRAST

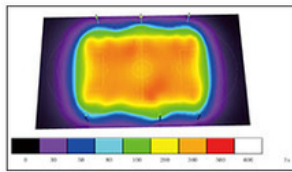
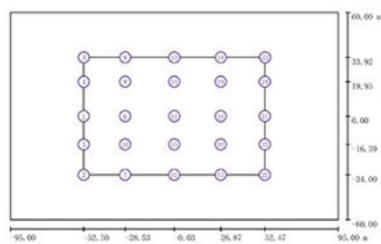
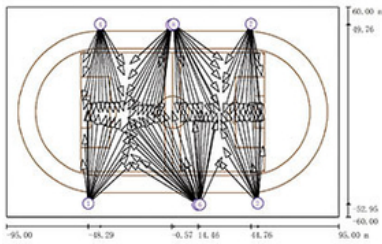


USHINERAY LED CRI $\geq 80Ra$

OTHER LED CRI $\geq 70Ra$

Providing LED energy-saving

Program free lighting consultation; lighting and circuitry design; DIALux calculation and visualization; Auto CAD layout.



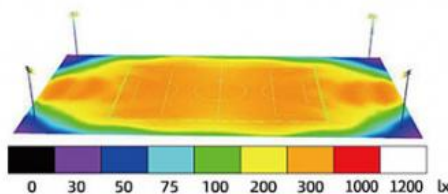
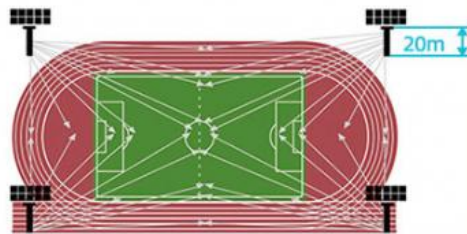
300W 250	7	44.761	50.308	20.500	33.223	-1.047	0.000
300W 250	7	44.761	50.308	20.500	28.443	18.881	0.000
300W 250	7	44.761	50.308	20.500	29.869	27.536	0.000
300W 250	7	44.761	50.308	20.500	41.308	-0.779	0.000
300W 250	7	44.761	50.308	20.500	47.414	-0.417	0.000
300W 250	7	44.761	50.308	20.500	28.443	11.296	0.000
300W 250	7	44.761	50.308	20.500	41.308	-2.430	0.000
300W 250	7	44.761	50.308	20.500	38.496	-0.890	0.000
300W 250	7	44.761	50.308	20.500	33.223	-1.047	0.000
300W 250	7	44.761	50.308	20.500	28.443	18.881	0.000
300W 250	7	44.761	50.308	20.500	29.869	27.536	0.000
300W 250	7	44.761	50.308	20.500	41.308	-0.779	0.000
300W 250	7	44.761	50.308	20.500	47.414	-0.417	0.000

Reference Scheme for Stadium Lighting

Lighting design	Training Ground
Competition area	Eave $> 300lx$ $U > 0.7$
Assemble competition area	Eave $> 200lx$ $U > 0.5$
Lamp pole	4 poles and 40 lamps, with a height of 20m



LED Stadium Light
(1000W)





Company Profile

Shenzhen YongXinRui Lighting Technology Co., Ltd., established in 2010, we are a manufacturing and trading combo, specializing in Outdoor LED Lighting: LED Balloon Lights, LED Stadium Lights, LED Flood Lights, LED Street Lights and Tunnel Lights, etc. Our main markets are in Europe, South America, Southeast Asia, and Oceania, and also we export to North America and some Middle Eastern countries; all of our LED lights are with CE, RoHS, and some of them are with ETL, DLC, TUV, etc. YongXinRui Lighting is committed to R&D and promoting of semiconductor lighting products and has accumulated a wealth of experience. We provide high-quality products, and excellent pre-sales and after-sales service to customers. Mutual benefit and common development is our aim. We sincerely look forward to cooperating with more customers in the world.

Provided service from Yongxinrui: OEM/ODM(Lighting product design) Providing LED energy saving program Free lighting consultation Lighting and circuitry design DIALux calculation and visualization Auto CAD layout Combined with your on-site project needs, we will wholeheartedly provide you with professional and detailed light distribution advice and light simulation solutions.

OUR FACTORY



Exhibition

Shenzhen Yongxinrui Lighting Technology Co., Ltd



Guangzhou International Lighting Exhibition



PRODUCTION SITE





FAQ

Q: Are you manufacturer or trading company?

A: We are manufacturer. We have more than 14 years of experience in R&D, manufacturing and sales for outdoor lighting.

Q: Do you provide OEM/ODM services?

A: Yes, of course! We have experienced design team, welcome customers customize by pictures.

Q: How to place an order?

A: First, contact our salesman, tell her which products you need and your requirements. Next, she can make an order for you and send you the payment link. Last, you just need to make the payment and wait to receive the goods.

Q: Do you accept sample order?

A: Yes, welcome to place sample order to us. Mixed samples are acceptable.

Q: How is your delivery time?

A: If we have this item in stock, we will ship it within 3 days. If not, it will take 7-10 days to ship.


Q: Do provide after-sales service?

A: Yes, sure! Our products have 5 years warranty, any problems can contact us and we will solve it in the first time.

 **Shenzhen Yongxinrui Lighting Technology Co., Ltd.**

 +8613410523891

 joy@ushineray.com

 ushineraylight.com

4F, Building C, Junxing Optoelectronic Industrial Park, Fuyuan 2nd Road, FuHai Street, Bao'an District,
Shenzhen