

200W High LED Mast Light High Luminous Flux Stadium Sport Light For Landscape Light

Our Product Introduction

for more products please visit us on ushineraylight.com

Basic Information

- Place of Origin: Guangdong, China
- Brand Name: UShineray
- Certification: RoHS, CE, FCC, LVD
- Model Number: YXR-TL-200W-G
- Minimum Order Quantity: 1pcs
- Payment Terms: T/T, Paypal, Western Union



Product Specification

- Power: 200W
- Lumen: 26000lm
- Input Voltage(V): AC100-277V
- Warranty(Year): 5-Year
- Light Source: High Brightness LED
- Support Dimmer: Customized
- Lighting Solutions Service: Lighting And Circuitry Design, DIALux Evo Layout, LitePro DLX Layout, Auto CAD Layout, Agi32 Layout
- Applications: Highway Tunnel Lighting; Warehouse; Facade Lighting
- LED Chip: San'an/ Lumileds 3030
- CCT: 2700K-6500K
- Highlight: stadium sport light for landscape light, 200w led mast light, 200w stadium sport light



More Images



Product Description

High Luminous Flux 200W Stadium Sport High Mast Light for Landscape Light

Offering high luminous flux, this 200W stadium sport high mast light is perfect for landscape lighting. It delivers powerful and even illumination, enhancing the visibility of outdoor spaces such as parks and recreational areas. Its high-performance design ensures vibrant and effective lighting for landscape aesthetics and safety.

Product Features

1. Strong bracket, more solid installation
2. Optical PC lens, no-yellowing material; Light transmittance of PC more than 93%.
3. Silicone waterproof sealing strip. UV-resistant material, reliable without failure.
4. 3030 SMD light source design, luminous efficiency 160lm/W.
5. Super competitive IP66 Die-casting modular tunnel floodlights 100W-1200W.
6. With Driver box (to avoid driver totally external).
7. Beam angle : 30/60/90 degrees optional.
8. Perfect corrosion proof : All 304 stainless steel screws , die-casting pure aluminum radiator, good heat dissipation, ultra-low luminous decay<10%.
9. Intelligent dimming system.0~10V, DMX, and DALI dimming models are available.

Product Parameters

Model	YXR-TL-200W-G
Power	200W
Lumen (lm)	26000
Weight (kg)	4.6
Sizes(mm)	400*205*180
Light Efficiency	130lm/W
CCT	2800-3000K;3000-3200K;4000-4500K;5000-5500K;6000-6500K
CRI	≥70Ra
LED	San'an/Lumileds SMD 3030,120pcs per module
PF	>0.97
Input Voltage	AC100-277V(Moso)
THD	15%<THD<20%
Beam Angle	30/60°/90°/70°140°
Work Temp	-35~+55°C
Humidity	15%~90%RH,no condensing
Finish	Sprayed with outdoor special powder
Life Span	≥50,000 Hrs (LM80@35°C)
IP Grade	IP66
IK Grade	IK08
Body material	PC lens + Aluminum housing
Power Wire	Rubber cable(3*0.75mm²) L=0.3m
Electronic safety grade	Class I

Product Details



Streamlined design of the lamp body

Sheet metal frame, die-casting aluminum radiator, reducing the volume of the lamp body without affecting the heat dissipation, the transportation cost is reduced, and the installation is convenient.



High quality
chip



Optical lens



IP66



Engineering
quality



IP66 Waterproof

Equipped with silicone waterproof ring, integrated waterproof lens. IP66 waterproof and dust-proof, no fear of harsh environment.



IP66

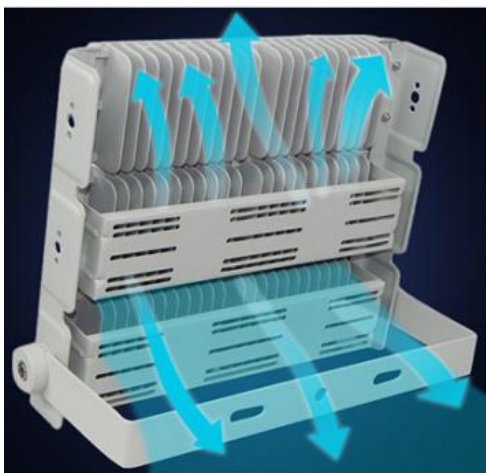


Anti-corrosion >130h/VV

Gear scale design

It is more convenient to adjust and fix the angle, and at the same time, avoid the phenomenon of paint peeling due to friction between the bracket and the lamp body.



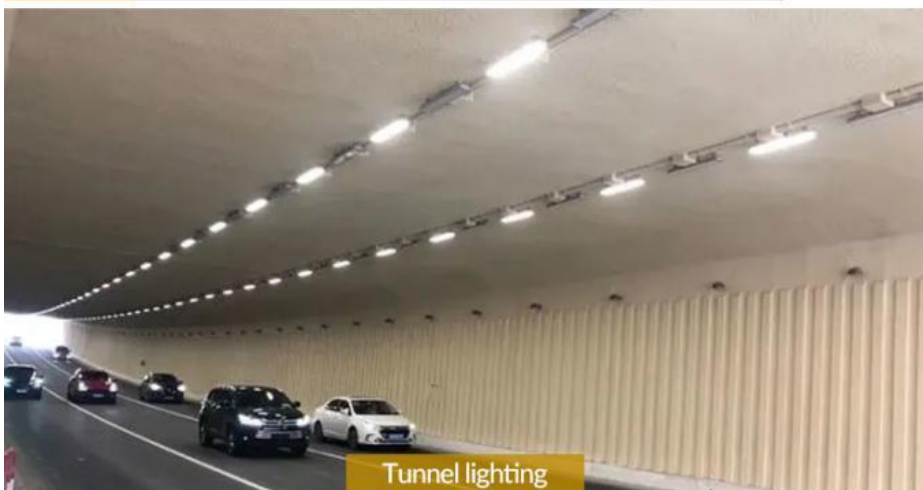


Die-casting module radiator

The die-casting process module radiator is adopted, the bottom plate is in close contact with the light source, and the air convection air duct ensures stable heat dissipation performance.

Wide Range Of Applications

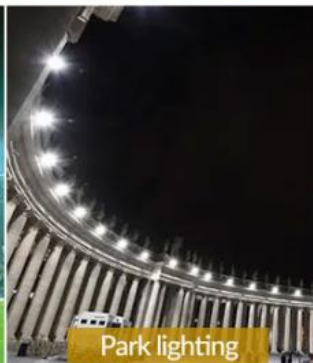
Stadiums /Parks/Tunnels/Squares.



Tunnel lighting



Stadium lighting



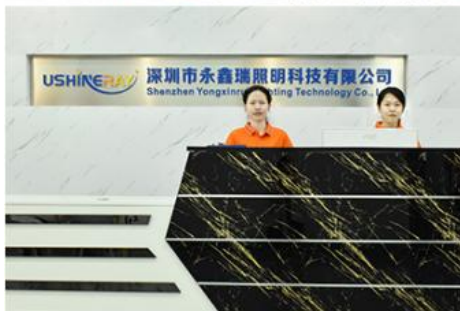
Park lighting



Square lighting

Company Profile

OUR FACTORY



Our Exhibition



PRODUCTION SITE



FAQ

Q1. Are you a manufacturer?

Yes, we have our factory with over 10 years of R&D and manufacturing experience based on ISO quality management since 2011.

Q2. Do you have any MOQ limit for LED light orders?

No MOQ, 1pc for sample checking is available.

Q3. Can I get a lower price for a large quantity of orders?

Yes, please check with our sales staff for the details.

Q4. How about the lead time of ordering?

Our standard sample lead time is 3-5 days, and normal order lead time is 7-10 days. For the large order lead time, please also check with our sales team.

Q5. Can you provide OEM and ODM services?

We can provide OEM and ODM products, with customized label designs on the product and carton box. Or customized carton box, and laser print logo on the lamp fixture.

Q6. What is the payment terms of your formal order?

We accept payment via TT, Paypal, and Western Union, and we offer EXW, FOB, CIF, and CFR terms.

Q7. How to deal with the defective?

All of our products are produced in a strict quality control system, the defective rate is less than 0.2% according to our shipment records. We offer a 3- 5 years warranty for this product, if there is any defective during the warranty, please provide pictures or videos of the working situation of the defective lights, and we will ship the new lights to you within a few days or send it together with your next order.

 **Shenzhen Yongxinrui Lighting Technology Co., Ltd.**



+8613410523891



joy@ushineray.com



ushineraylight.com

4F, Building C, Junxing Optoelectronic Industrial Park, Fuyuan 2nd Road, FuHai Street, Bao'an District,
Shenzhen