

High Luminous LED High Mast Light 300W Led Stadium Light For Tunnel Illumination

Our Product Introduction

for more products please visit us on ushineraylight.com

Basic Information

- Place of Origin: Guangdong, China
- Brand Name: UShineray
- Certification: RoHS, CE, FCC, LVD
- Model Number: YXR-TL-300W-G
- Minimum Order Quantity: 1pcs
- Payment Terms: T/T, Paypal, Western Union



Product Specification

- Power: 300W
- Lumen: 39000lm
- Input Voltage(V): AC100-277V
- Warranty(Year): 5-Year
- Light Source: High Brightness LED
- Support Dimmer: Customized
- Lighting Solutions Service: Lighting And Circuitry Design, DIALux Evo Layout, LitePro DLX Layout, Auto CAD Layout, Agi32 Layout
- Applications: Highway, Tunnel Lighting; Warehouse; Outdoor Lighting
- LED Chip: San'an/ Lumileds 3030
- CCT: 2700K-6500K
- Highlight: 300w led stadium light, led high mast light 300w, high luminous led high mast light



More Images



Product Description

High Luminous Efficacy 300W led mast light stadium light for Tunnel Illumination

Our High Luminous Efficacy 300W LED Mast Light is designed for optimal tunnel illumination. With an impressive luminous efficacy of 160lm/W, it ensures bright and energy-efficient lighting. This stadium light is built to withstand harsh conditions with an IP65 waterproof rating. Its adjustable brightness feature provides flexibility for different lighting needs. The glare-free design enhances visibility, making it perfect for tunnel environments. Easy to install and maintain, this LED mast light is the ideal solution for reliable and durable tunnel lighting.

Product Features

Solid installation ensured by a strong bracket.

Non-yellowing optical PC lens with light transmittance exceeding 93%.

Reliable silicone waterproof sealing strip that is UV-resistant and ensures durability.

Luminous efficiency of 130lm/W from the 3030 SMD light source design.

High IP66 rating for die-casting modular tunnel floodlights ranging from 100W to 1200W.

Driver box integrated to keep the driver fully enclosed.

Available beam angles include 30°, 60°, and 90°.

Corrosion-resistant design with 304 stainless steel screws and a pure aluminum radiator, featuring less than 10% luminous decay.

Supports intelligent dimming with options for 0-10V, DMX, and DALI models.

Product Parameters

Model	YXR-TL-300W-G
Power	300W
Lumen (lm)	39000
Weight (kg)	6.1
Sizes(mm)	400*305*180
Light Efficiency	130lm/W
CCT	2800-3000K;3000-3200K;4000-4500K;5000-5500K;6000-6500K
CRI	≥70Ra
LED	San'an/Lumileds SMD 3030,120pcs per module
PF	>0.97
Input Voltage	AC100-277V(Moso)
THD	15%<THD<20%
Beam Angle	30/60°/90°/70°*140°
Work Temp	-35~+55°C
Humidity	15%~90%RH,no condensing
Finish	Sprayed with outdoor special powder
Life Span	≥50,000 Hrs (LM80@35°C)
IP Grade	IP66
IK Grade	IK08
Body material	PC lens + Aluminum housing
Power Wire	Rubber cable(3*1mm²) L=0.3m
Electronic safety grade	Class I

Product Details



Streamlined design of the lamp body

Sheet metal frame, die-casting aluminum radiator, reducing the volume of the lamp body without affecting the heat dissipation, the transportation cost is reduced, and the installation is convenient.



High quality
chip



Optical lens



IP66



Engineering
quality



IP66 Waterproof

Equipped with silicone waterproof ring, integrated waterproof lens. IP66 waterproof and dust-proof, no fear of harsh environment.



IP66

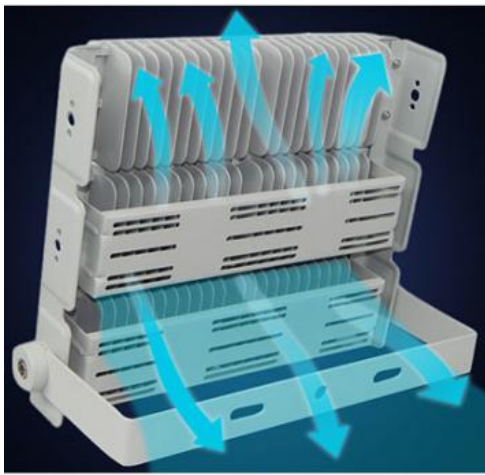


Anti-corrosion >130lm/W

Gear scale design

It is more convenient to adjust and fix the angle, and at the same time, avoid the phenomenon of paint peeling due to friction between the bracket and the lamp body.



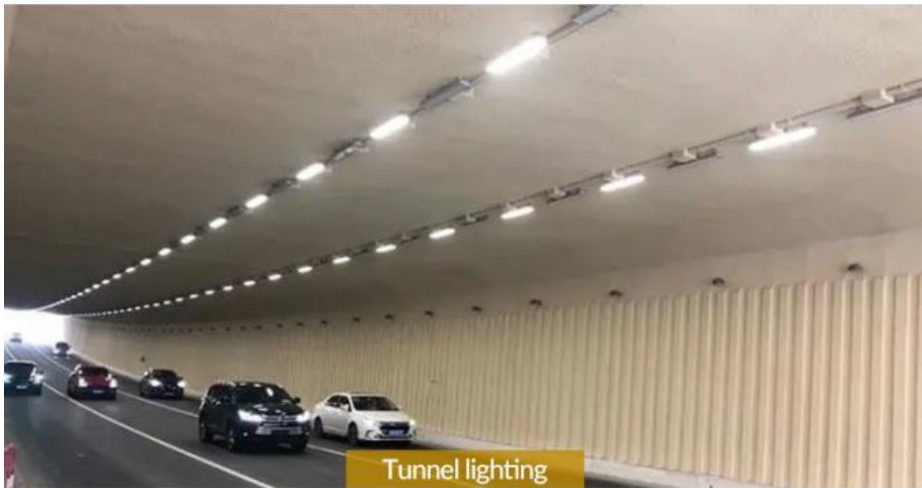


Die-casting module radiator

The die-casting process module radiator is adopted, the bottom plate is in close contact with the light source, and the air convection air duct ensures stable heat dissipation performance.

Wide Range Of Applications

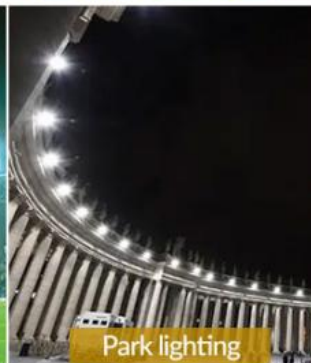
Stadiums /Parks/Tunnels/Squares.



Tunnel lighting



Stadium lighting



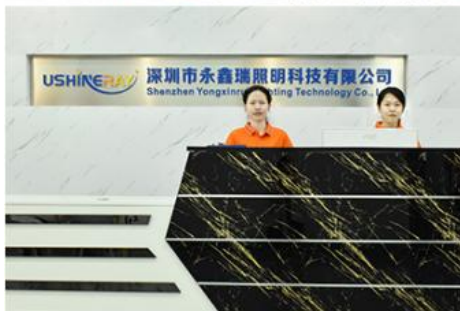
Park lighting



Square lighting

Company Profile

OUR FACTORY



Our Exhibition



PRODUCTION SITE



Applications

- Parking lotsn,Courtyard Lighting,Farm Lighting
- Cricket Stadium,horse barn,Baseball field
- Tennis Court,golf court,Soccer Stadium



FAQ

Q1. Are you a manufacturer?

Yes, we have our factory with over 10 years of R&D and manufacturing experience based on ISO quality management since 2011.

Q2. Do you have any MOQ limit for LED light orders?

No MOQ, 1pc for sample checking is available.

Q3. Can I get a lower price for a large quantity of orders?

Yes, please check with our sales staff for the details.

Q4. How about the lead time of ordering?

Our standard sample lead time is 3-5 days, and normal order lead time is 7-10 days. For the large order lead time, please also

check with our sales team.

Q5. Can you provide OEM and ODM services?

We can provide OEM and ODM products, with customized label designs on the product and carton box. Or customized carton box, and laser print logo on the lamp fixture.

Q6. What is the payment terms of your formal order?

We accept payment via TT, Paypal, and Western Union, and we offer EXW, FOB, CIF, and CFR terms.

Q7. How to deal with the defective?

All of our products are produced in a strict quality control system, the defective rate is less than 0.2% according to our shipment records. We offer a 3- 5 years warranty for this product, if there is any defective during the warranty, please provide pictures or videos of the working situation of the defective lights, and we will ship the new lights to you within a few days or send it together with your next order.

 **Shenzhen Yongxinrui Lighting Technology Co., Ltd.**



+8613410523891



joy@ushineray.com



ushineraylight.com

4F, Building C, Junxing Optoelectronic Industrial Park, Fuyuan 2nd Road, FuHai Street, Bao'an District,
Shenzhen