



Optical Lens LED High Mast Light 600W LED Tunnel Light For Airport Runway

Our Product Introduction

for more products please visit us on ushineraylight.com

Basic Information

- Place of Origin: Guangdong, China
- Brand Name: UShineray
- Certification: RoHS, CE, FCC, LVD
- Model Number: YXR-TL-600W-G
- Minimum Order Quantity: 1pcs
- Payment Terms: T/T, Paypal, Western Union



Product Specification

- Power: 600W
- Lumen: 78000lm
- Input Voltage(V): AC100-277V
- Warranty(Year): 5-Year
- Light Source: High Brightness LED
- Support Dimmer: Customized
- Applications: High Pole Lighting, High Mast Lighting, Tunnel Lighting
- LED Chip: San'an/ Lumileds 3030
- CCT: 2700K-6500K
- Service: DIALux Calculation And Visualization
- Highlight: 600w led tunnel light, led high mast light 600w, optical lens led high mast light



More Images



Product Description

Optical Lens Design 600W High Light Mast for Airport Runway

Featuring advanced optical lens design, this 600W high light mast is ideal for airport runway lighting. It provides precise and focused illumination, enhancing safety and visibility for aircraft takeoff and landing. The optical lens technology ensures optimal light distribution and reduces glare for effective runway lighting.

Product Features

Equipped with a strong bracket for solid and secure installation.

Optical PC lens with a light transmittance above 93%, resistant to yellowing.

Silicone waterproof sealing strip with UV resistance for reliable performance.

3030 SMD LED technology provides a luminous efficiency of 130lm/W.

Offers IP66-rated die-casting modular tunnel floodlights, available from 100W up to 1200W.

Driver box is integrated internally, protecting it from external elements.

Beam angles available in 30°, 60°, and 90° for flexible lighting solutions.

Corrosion-proof with 304 stainless steel screws and die-casting aluminum radiator, with luminous decay under 10%.

Intelligent dimming capabilities with 0-10V, DMX, and DALI options.

Product Parameters

Model	YXR-TL-600W-G
Power	600W
Lumen (lm)	78000
Weight (kg)	12.6
Sizes(mm)	400*620*180
Light Efficiency	130lm/W
CCT	2800-3000K;3000-3200K;4000-4500K;5000-5500K;6000-6500K
CRI	≥70Ra
LED	San'an/Lumileds SMD 3030,120pcs per module
PF	>0.97
Input Voltage	AC100-277V(Moso)
THD	15%<THD<20%
Beam Angle	30/60°/90°/70°*140°
Work Temp	-35~+55°C
Humidity	15%~90%RH,no condensing
Finish	Sprayed with outdoor special powder
Life Span	≥50,000 Hrs (LM80@35°C)
IP Grade	IP66
IK Grade	IK08
Body material	PC lens + Aluminum housing
Power Wire	Rubber cable(3*1mm²) L=0.3m
Electronic safety grade	Class I

Product Details



IP66 Waterproof

Equipped with silicone waterproof ring, integrated waterproof lens. IP66 waterproof and dust-proof no fear of harsh environment.



Gear scale design

It is more convenient to adjust and fix the angle and at the same time avoid the phenomenon of paint peeling due to friction between the bracket and the lamp body.

High -quality rotation screw

304 stainless steel screws, long -term durability, anti-rust and anti -corrosion.



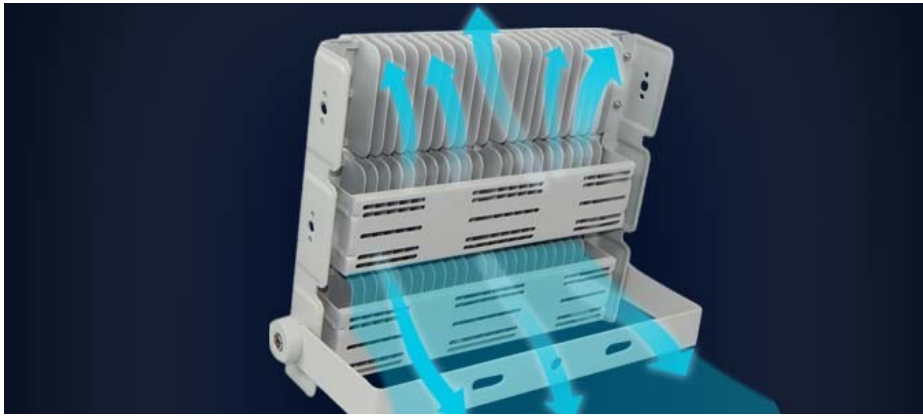
Acrylic optical lens high brightness LED Chips

Acrylic optical lens effectively casts the light around, making the light shine farther and brighter.



Moso LED driver

Famous brand Moso or other brand driver optional, good stability, high efficiency, flicker free, anti-surge.

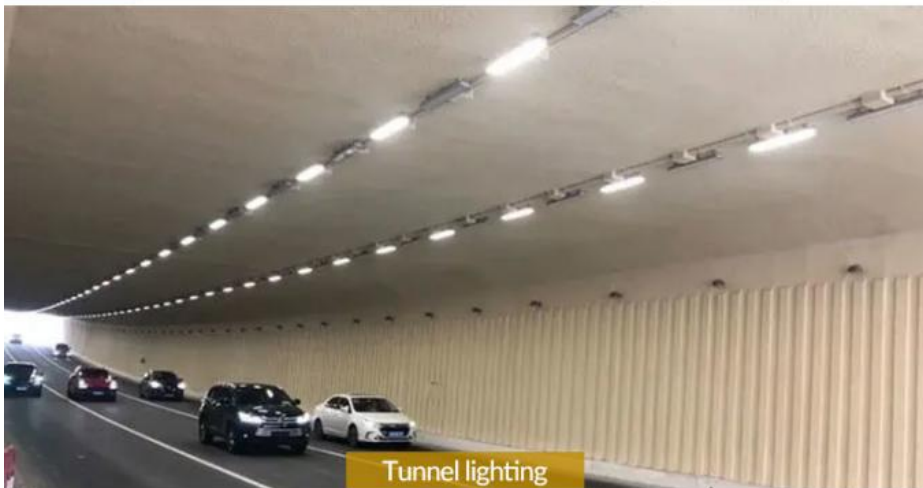


Die-casting module radiator

The die-casting process module radiator is adopted the bottom plate is in close contact with the light source and the air convection air duct ensures stable heat dissipation performance.

Wide Range Of Applications

Stadiums /Parks/Tunnels/Squares.



Tunnel lighting



Stadium lighting



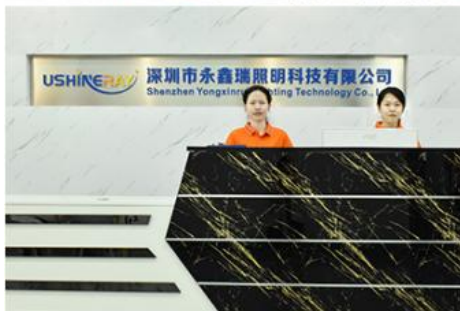
Park lighting



Square lighting

Company Profile

OUR FACTORY



Our Exhibition



PRODUCTION SITE



FAQ

Q1: Are you a manufacturer ?

USHINERAY: Yes, we have our own factory with over 14 years R&D and manufacture experience base on ISO quality management since 2009.

Q2. Can I have a sample order for LED Stadium Light?

USHINERAY: Yes, sample order is always welcomed.

Q3. How about the lead time of LED Stadium Light ?

USHINERAY: 5-7 days for sample order, 10-20 days for mass production order base on order quantities.

Q4: How do you ship the finished production ?

USHINERAY: By SEA, AIR or Express(DHL,UPS,Fedex,TNT,etc) are optional.

Q5: Is it OK to print my logo on LED Stadium Light ?

USHINERAY: Yes, we offer screen printing or laser printing

Q6: How to proceed an order for LED Stadium Light ?

USHINERAY: Firstly, send your detail requirement and application environment, secondly we will recommend some suitable products and solutions to you according to your request. Thirdly, after confirm all the details, you can issue the purchase order and make the payment , then we start for the production and arrange the shipment.

Q7: How to deal with the defective?

USHINERAY: All of our product are produced in strict quality control system, the defective rate is less than 0.2% according to our shipment records. We offer 5 years warranty, if there is any defective during the warranty, please provide the picture or video, we will ship the new lights to you within a few days or send it together with your next order.

USHINERAY Shenzhen Yongxinrui Lighting Technology Co., Ltd.

+8613410523891

joy@ushineray.com

ushineraylight.com

4F, Building C, Junxing Optoelectronic Industrial Park, Fuyuan 2nd Road, FuHai Street, Bao'an District, Shenzhen