



Overload Protection 800W High Mast Flood Light For Tunnel Project

Our Product Introduction

for more products please visit us on ushineraylight.com

Basic Information

- Place of Origin: Guangdong, China
- Brand Name: UShineray
- Certification: RoHS, CE, FCC, LVD
- Model Number: YXR-TL-800W-G
- Minimum Order Quantity: 1pcs
- Payment Terms: T/T, Paypal, Western Union



Product Specification

- Power: 800W
- Lumen: 104000lm
- Input Voltage(V): AC100-277V
- Warranty(Year): 5-Year
- Light Source: High Brightness LED
- Support Dimmer: Customized
- Applications: High Mast Lighting, Tunnel Project Illumination
- LED Chip: San'an/ Lumileds 3030
- CCT: 2700K-6500K
- Service: DIALux Calculation And Visualization
- Highlight: **277v flood light high mast,**
277v high mast flood light,
ac100 flood light high mast



More Images



Product Description

Overload Protection 800W High Mast Flood Light for Tunnel Project

The 800W high mast flood light is equipped with overload protection, making it suitable for tunnel lighting projects. It safeguards against electrical overloads, ensuring reliable performance in demanding environments. Designed for high-intensity lighting, it provides consistent and safe illumination for tunnel operations.

Product Features

Features a strong bracket for enhanced stability during installation.

Optical PC lens with high transmittance (>93%) and resistance to yellowing.

UV-resistant silicone sealing strip ensures effective waterproofing and durability.

Delivers 130lm/W luminous efficiency with advanced 3030 SMD light sources.

Die-casting modular tunnel floodlights with IP66 protection, ranging from 100W to 1200W.

Internal driver box design keeps the driver protected and hidden.

Adjustable beam angles: 30°, 60°, and 90° to meet various lighting needs.

Exceptional corrosion resistance with 304 stainless steel screws and aluminum radiator, with less than 10% luminous decay.

Equipped with an intelligent dimming system supporting 0-10V, DMX, and DALI.

Product Parameters

Model	YXR-TL-800W-G
Power	800W
Lumen (lm)	104000
Weight (kg)	16.3
Sizes(mm)	765*410*180
Light Efficiency	130lm/W
CCT	2800-3000K;3000-3200K;4000-4500K;5000-5500K;6000-6500K
CRI	≥70Ra
LED	San'an/Lumileds SMD 3030,120pcs per module
PF	>0.97
Input Voltage	AC100-277V(Moso)
THD	15%<THD<20%
Beam Angle	30/60°/90°/70°*140°
Work Temp	-35~+55°C
Humidity	15%~90%RH,no condensing
Finish	Sprayed with outdoor special powder
Life Span	≥50,000 Hrs (LM80@35°C)
IP Grade	IP66
IK Grade	IK08
Body material	PC lens + Aluminum housing
Power Wire	Rubber cable(3*1.5mm²) L=0.3m
Electronic safety grade	Class I

Product Details



IP66 Waterproof

Equipped with silicone waterproof ring, integrated waterproof lens. IP66 waterproof and dust-proof no fear of harsh environment.



Gear scale design

It is more convenient to adjust and fix the angle and at the same time avoid the phenomenon of paint peeling due to friction between the bracket and the lamp body.

High -quality rotation screw

304 stainless steel screws, long -term durability, anti-rust and anti -corrosion.



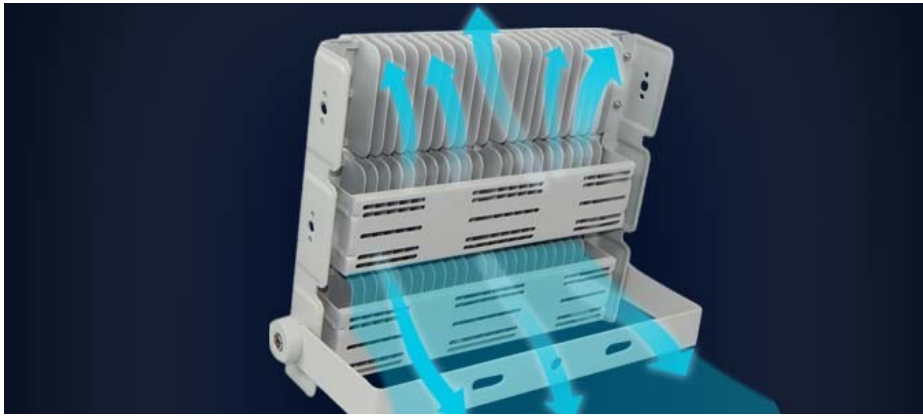
Acrylic optical lens high brightness LED Chips

Acrylic optical lens effectively casts the light around, making the light shine farther and brighter.



Moso LED driver

Famous brand Moso or other brand driver optional, good stability, high efficiency, flicker free, anti-surge.



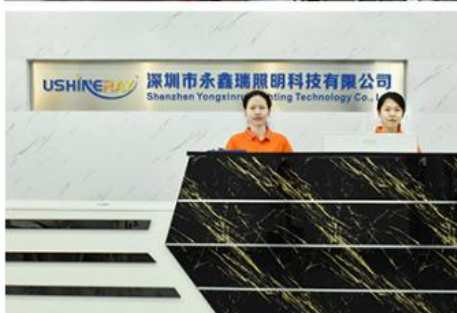
Die-casting module radiator

The die-casting process module radiator is adopted the bottom plate is in close contact with the light source and the air convection air duct ensures stable heat dissipation performance.

Applications

Tunnel Illumination, street lighting, highway lighting, underpass lighting, and bridge lighting, parking lot lighting, industrial lighting, roadway lighting, urban lighting, and emergency lighting, area lighting, flood lighting, construction site lighting, outdoor lighting, sports field lighting, perimeter lighting, and transport infrastructure lighting.

OUR FACTORY



Our Exhibition



PRODUCTION SITE



FAQ

Q1: Are you a manufacturer ?

USHINERAY: Yes, we have our own factory with over 14 years R&D and manufacture experience base on ISO quality management since 2009.

Q2. I really would like to try a sample first ,is that possible?

Yes,that's sure. Our MOQ only 1 pieces,easy know each other better via samples, we look on the long term and win-win cooperation.

Q3. How about the lead time of LED Stadium Light ?

USHINERAY: 5-7 days for sample order, 10-20 days for mass production order base on order quantities.

Q4: How do you ship the finished production ?

USHINERAY: By SEA, AIR or Express(DHL,UPS,Fedex,TNT,etc) are optional.

Q5: Can we make our own label on the sample lights?

Yes, we can use the label you offer, we can also do OEM & ODM

Q6: How to proceed an order for LED Stadium Light ?

USHINERAY: Firstly, send your detail requirement and application environment, secondly we will recommend some suitable products and solutions to you according to your request. Thirdly, after confirm all the details, you can issue the purchase order and make the payment, then we start for the production and arrange the shipment.

Q7: How to deal with the defective?

USHINERAY: All of our product are produced in strict quality control system, the defective rate is less than 0.2% according to our shipment records. We offer 5 years warranty, if there is any defective during the warranty, please provide the picture or video, we will ship the new lights to you within a few days or send it together with your next order.

USHINERAY Shenzhen Yongxinrui Lighting Technology Co., Ltd.



+8613410523891



joy@ushineray.com



ushineraylight.com

4F, Building C, Junxing Optoelectronic Industrial Park, Fuyuan 2nd Road, FuHai Street, Bao'an District,
Shenzhen