

Aluminum Die-Casting 100W Led Flood Lights Indoor Garden Floodlight For Theme Park

Our Product Introduction

for more products please visit us on ushineraylight.com

Basic Information

- Place of Origin: Shenzhen, Guangdong
- Brand Name: UShineray
- Certification: CE, EMC, LVD, RoHS, FCC
- Model Number: YXR-FL-100W-E
- Minimum Order Quantity: 1 pcs
- Packaging Details: 1 pcs in Inner box
- Payment Terms: T/T, Paypal, Western Union
- Supply Ability: 3000 Piece/Pieces per Week



Product Specification

- Power: 100W
- Lamp Luminous Efficiency(lm/w): 15000lm
- Intelligent Control: Customized
- Lighting Solutions Service: Lighting And Circuitry Design, DIALux Evo Layout, LitePro DLX Layout, Auto CAD Layout
- Material: High Strength Aluminum Alloy+Tempered Glass
- Waterproof: IP66
- Applications: Public Park Illumination
- Light Source: Lumileds 2835 LED Chips
- Highlight: **100w flood lights outdoor, 100w outdoor led flood lights, Indoor Garden Floodlight For Theme Park**



More Images



Product Description

Aluminum Die-Casting 100W LED Flood Lights Indoor Garden Floodlight for Theme Park
Enhance your indoor garden at theme parks with this 100W LED flood light, featuring a robust aluminum die-casting design. It delivers powerful and consistent light, perfect for creating vibrant and safe environments in garden areas. Its durable construction ensures long-lasting performance, making it suitable for high-traffic, decorative spaces.

Product Features

Power range from 50W to 400W with impressive light efficacy of 150lm/W.
Selectable beam angles of 30°, 60°, 90°, and 120° for customized lighting.
Lamp offers 180° adjustability for optimal light direction.
Built to IP66 standards for excellent water resistance and IK08 impact resistance.
Made with a durable die-casting aluminum housing and anti-corrosion powder coating.
Features a thin and aerodynamic design for enhanced visual appeal.
Elegant and contemporary design suitable for various settings.

Product Parameters

Model	YXR-FL-100W-E
Wattage	100W
Other Power Options	50W 150W 200W 300W 400W
Lumen	15000±5%lm
Size(mm)	315*269*50
Net Weight	2.1kg
Light Efficacy	150lm/W ±5%
LED	Lumileds 2835
Beam Angle	30°/60°/90°/120°
Color Temperature	2700-6500K
Input Voltage	AC100-277V(Moso)
CRI	≥70Ra
PF	>0.97
THD	15%<THD<20%
Humidity	15%~90% RH, no condensing
Work Temperature	-40~60°C
IP Grade	IP66
IK Grade	IK08
Warranty	5 Years
Life Span	≥50000H
Finish	Sprayed with outdoor special powder
Body Material	PC lens + Aluminum housing
Electronic Safety Grade	Class I
Wire	Rubber cable(3*0.75mm²) L=0.3m

Product Details

130
lm/w

LED FLOOD LIGHT

50W~400W Beam angle: 30°/60°/90°



High brightness



Good quality

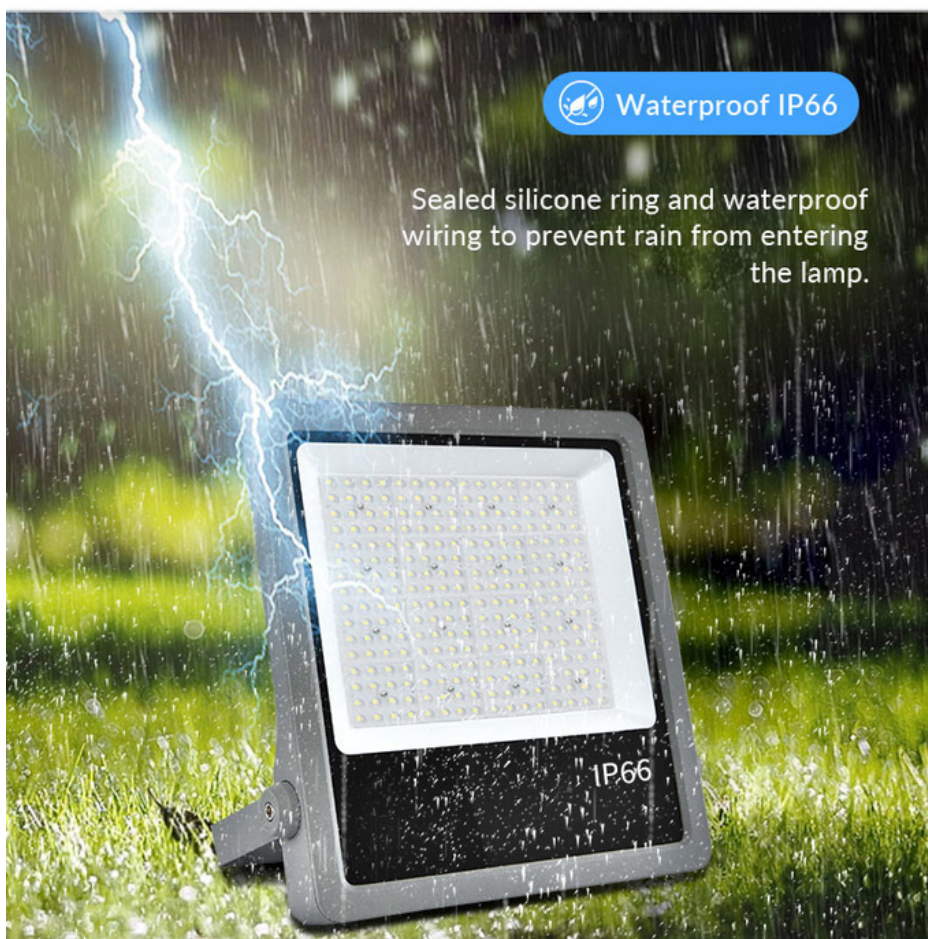


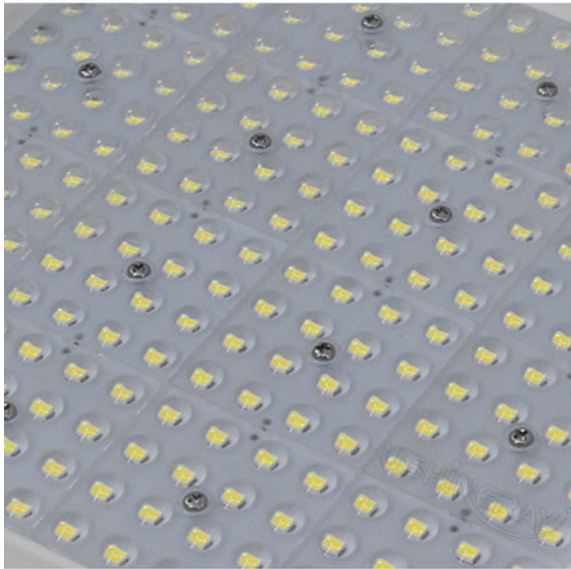
IES test report



Waterproof IP66

Sealed silicone ring and waterproof wiring to prevent rain from entering the lamp.





Various beam angle

Accurate light distribution:
30°/60°/90°, suitable for
different places.

Various brands of power supply to choose from

Intelligent C chip control circuit,
with short circuit, over-voltage,
and low voltage protection,
more stable, and longer life.



Flexible installation bracket

The rotatable multi
directional lighting
installation is convenient.

Respiratory heat dissipation hole

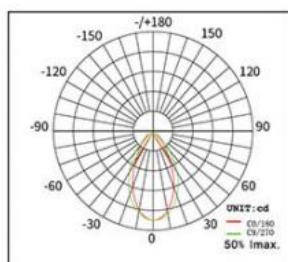
Efficient heat dissipation breathing hole, effective heat dissipation, and increased product service life.



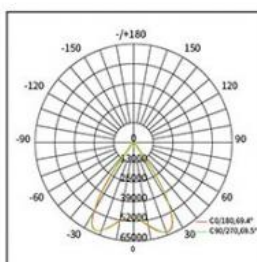
Grey



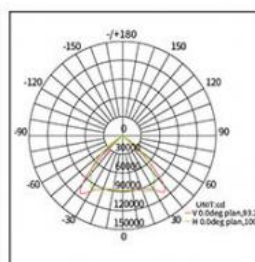
Black









30°



60°

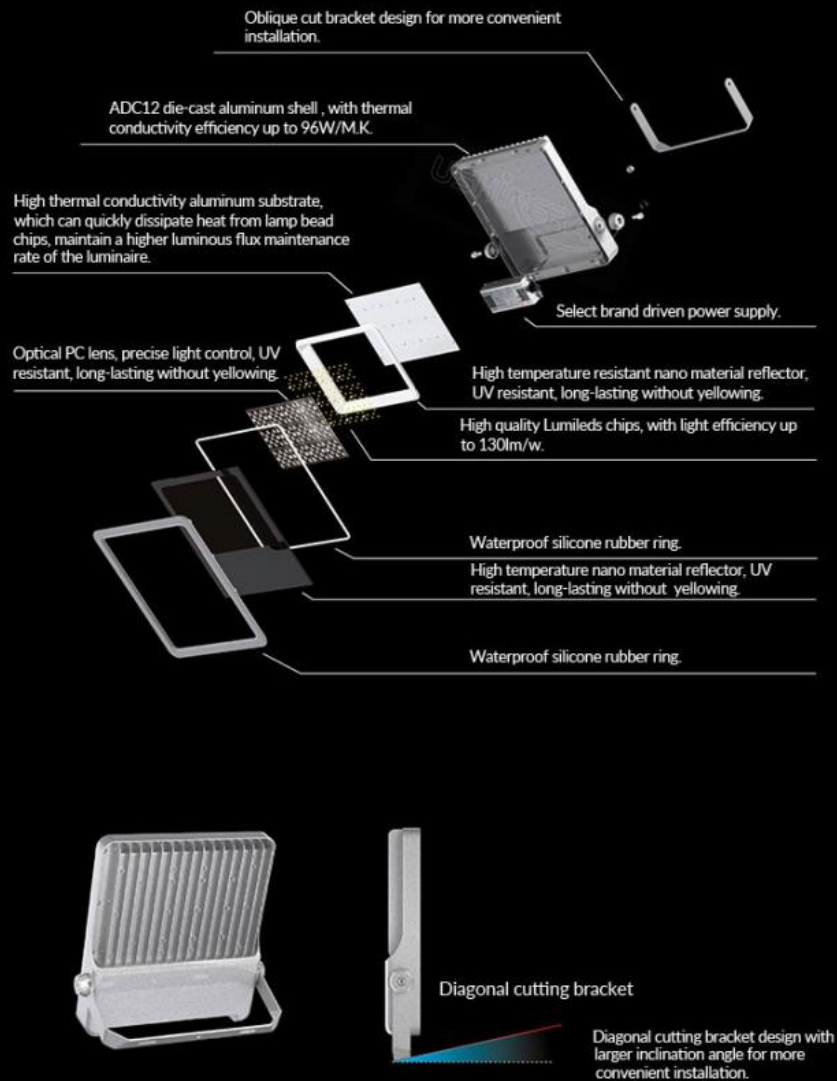


90°

 <p>Outdoor waterproofing</p>	 <p>Bright and uniform</p>	 <p>Energy conservation</p>
 <p>Long life and durability</p>	 <p>Strong heat dissipation</p>	 <p>3-Year warranty</p>



Exploded view



THERMAL MANAGEMENT



Quick heat
dissipation

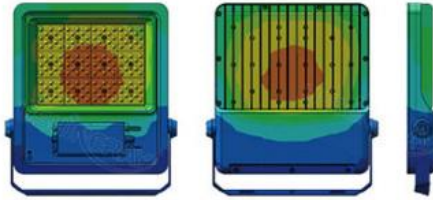


Low
temperature

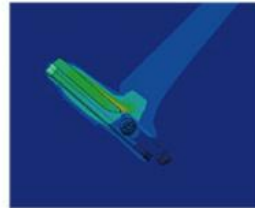


High lifespan

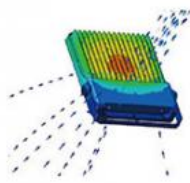
The structure is optimized using advanced
finite element analysis technology
maximize service life.



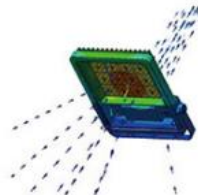
Thermal conductivity



Thermal effect on air



Hot air convection

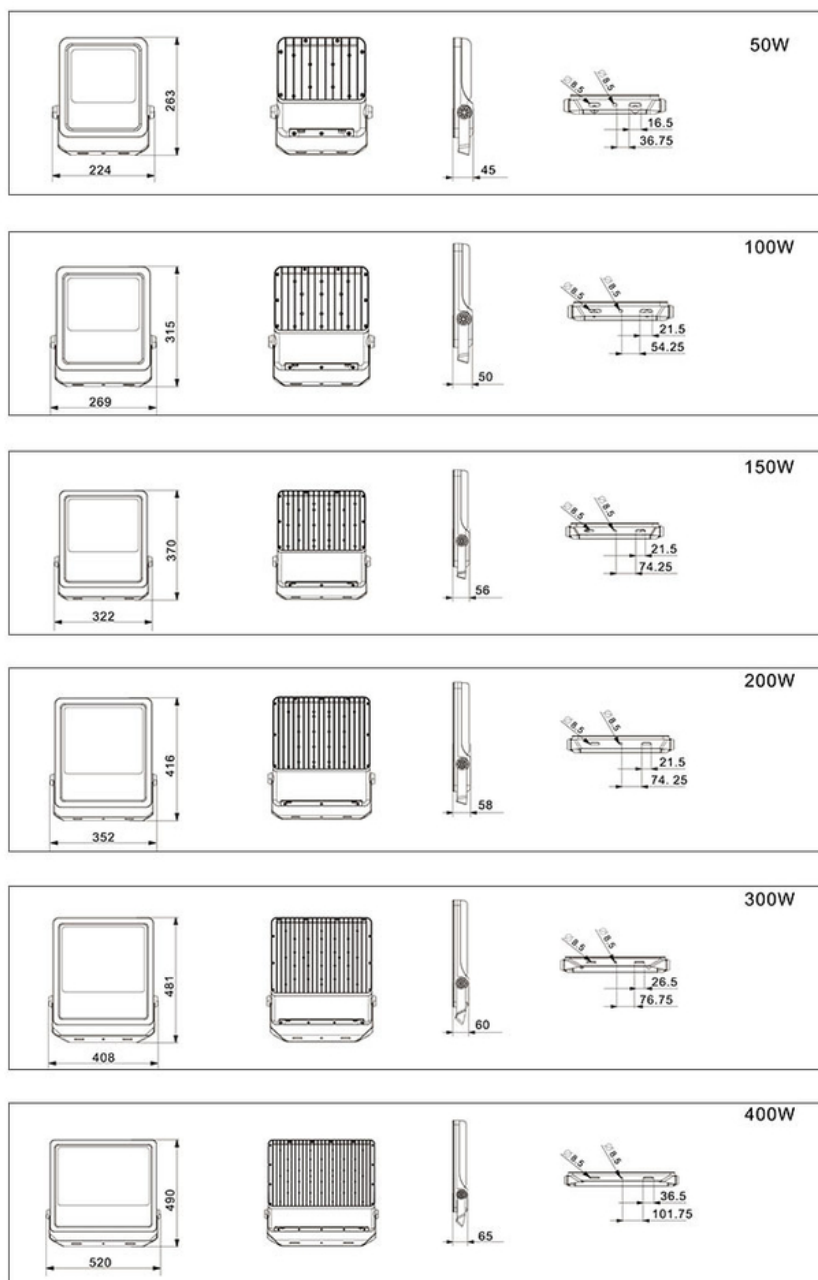


Hot air convection



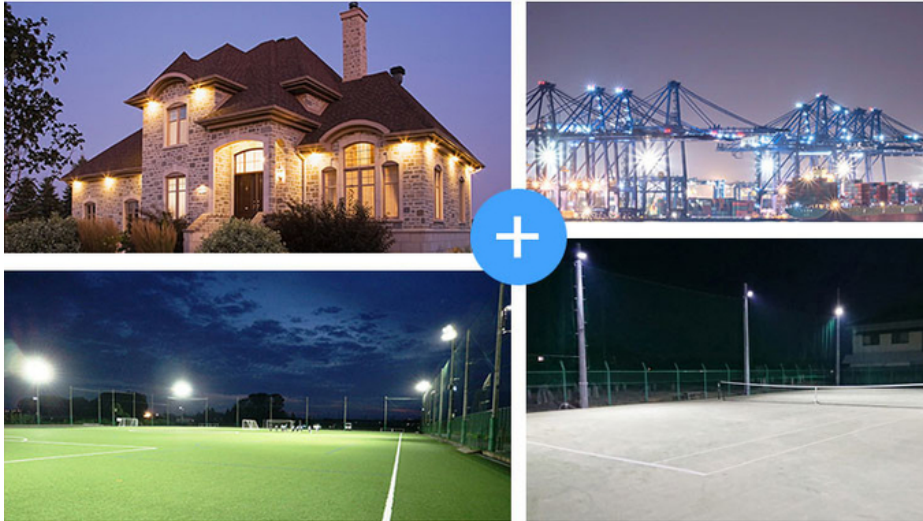
Unit: °C

Product Size(unit:mm)





Applications



FAQ

Q1. Are you a manufacturer?

Yes, we have our factory with over 10 years of R&D and manufacturing experience based on ISO quality management since 2011.

Q2. Do you have any MOQ limit for LED light orders?

No MOQ, 1pc for sample checking is available.

Q3. Can I get a lower price for a large quantity of orders?

Yes, please check with our sales staff for the details.

Q4. How about the lead time of ordering?

Our standard sample lead time is 3-5 days, and normal order lead time is 7-10 days. For the large order lead time, please also check with our sales team.

Q5. Can you provide OEM and ODM services?

We can provide OEM and ODM products, with customized label designs on the product and carton box. Or customized carton box, and laser print logo on the lamp fixture.

Q6. What is the payment terms of your formal order?

We accept payment via TT, Paypal, and Western Union, and we offer EXW, FOB, CIF, and CFR terms.

Q7. How to deal with the defective?

All of our products are produced in a strict quality control system, the defective rate is less than 0.2% according to our shipment records. We offer a 3- 5 years warranty for this product, if there is any defective during the warranty, please provide pictures or videos of the working situation of the defective lights, and we will ship the new lights to you within a few days or send it together with your next order.

USHINERAY Shenzhen Yongxinrui Lighting Technology Co., Ltd.



+8613410523891



joy@ushineray.com



ushineraylight.com

4F, Building C, Junxing Optoelectronic Industrial Park, Fuyuan 2nd Road, FuHai Street, Bao'an District, Shenzhen