

IP66 Waterproof Outdoor LED Flood Lights Rustproof Stadium Flood Lights For Architectural

Our Product Introduction

for more products please visit us on ushineraylight.com

Basic Information

- Place of Origin: Shenzhen, Guangdong
- Brand Name: UShineray
- Certification: CE, EMC, LVD, RoHS, FCC
- Model Number: YXR-FL-150W-E
- Minimum Order Quantity: 1pcs
- Packaging Details: 1 pcs in Inner box
- Payment Terms: T/T, Paypal, Western Union
- Supply Ability: 3000 Piece/Pieces per Week



Product Specification

- Power: 150W
- Lamp Luminous Efficiency(lm/w): 22500lm
- Dimmable: Customized
- Lighting Solutions Service: Lighting And Circuitry Design, DIALux Evo Layout, LitePro DLX Layout, Auto CAD Layout
- Material: Aluminum Alloy+Tempered Glass
- Waterproof: IP66
- Applications: Landscape; Garden; Square
- Light Source: Lumileds 2835
- Highlight: **rustproof stadium flood lights, outdoor led flood lights rustproof, ip66 waterproof outdoor led flood lights**



More Images



Product Description

IP66 Waterproof Rustproof 150W Stadium Flood Lights LED Floodlight for Architectural Lighting

This 150W LED floodlight is engineered for architectural lighting with IP66 waterproof and rustproof capabilities. It provides bright and reliable illumination for various structures and outdoor installations, ensuring resilience against the elements. Ideal for enhancing architectural features with robust and consistent light.

Product Features

Available in power ratings from 50W to 400W, providing a high light efficacy of 150lm/W.

Offers multiple beam angles: 30°, 60°, 90°, and 120° for adjustable light distribution.

Entire lamp is adjustable up to 180° to meet different lighting needs.

IP66 ingress protection and IK08 impact rating ensure durability in harsh conditions.

Die-cast aluminum construction with anti-corrosion powder finish for long-lasting use.

Features a streamlined and ultra-thin profile for a modern look.

Designed with an exquisite and fashionable touch.

Product Parameter

Model	YXR-FL-150W-E
Wattage	150W
Other Power Options	50W 100W 200W 300W 400W
Lumen	22500±5%lm
Size(mm)	370*322*56
Net Weight	3.4kg
Light Efficacy	150lm/W ±5%
LED	Lumileds 2835
Beam Angle	30°/60°/90°/120°
Color Temperature	2700-6500K
Input Voltage	AC100-277V(Moso)
CRI	≥70Ra
PF	>0.97
THD	15%<THD<20%
Humidity	15%~90% RH, no condensing
Work Temperature	-40~60°C
IP Grade	IP66
IK Grade	IK08
Warranty	5 Years
Life Span	≥50000H
Finish	Sprayed with outdoor special powder
Body Material	PC lens + Aluminum housing
Electronic Safety Grade	Class I
Wire	Rubber cable(3*0.75mm²) L=0.3m

Product Details

130
lm/w

LED FLOOD LIGHT

50W~400W Beam angle: 30°/60°/90°



High brightness









Good quality



IES test report



 <p>Outdoor waterproofing</p>	 <p>Bright and uniform</p>	 <p>Energy conservation</p>
 <p>Long life and durability</p>	 <p>Strong heat dissipation</p>	 <p>3-Year warranty</p>

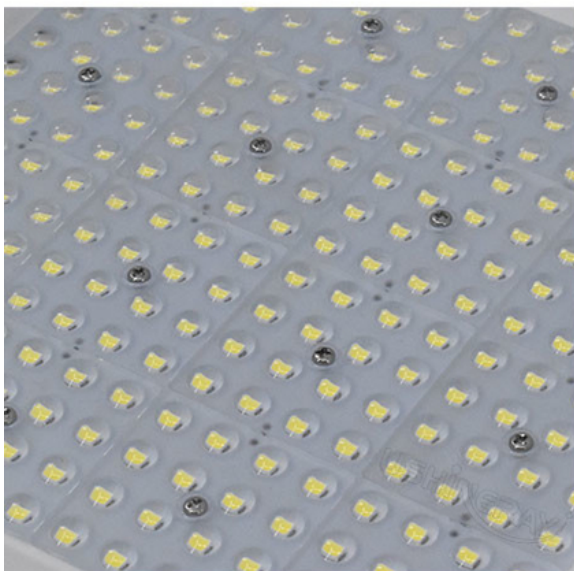




Waterproof IP66

Sealed silicone ring and waterproof wiring to prevent rain from entering the lamp.

DETAIL Product Details



Various beam angle

Accurate light distribution:
30°/60°/90°, suitable for
different places.

Various brands of power supply to choose from

Intelligent C chip control circuit, with short circuit, over-voltage, and low voltage protection, more stable, and longer life.



Flexible installation bracket

The rotatable multi directional lighting installation is convenient.

Respiratory heat dissipation hole

Efficient heat dissipation breathing hole, effective heat dissipation, and increased product service life.

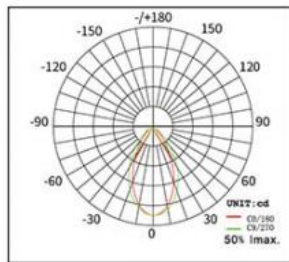




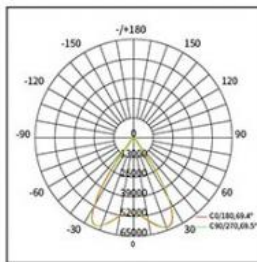
Grey



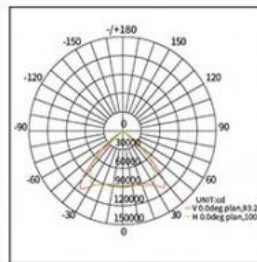
Black



30°

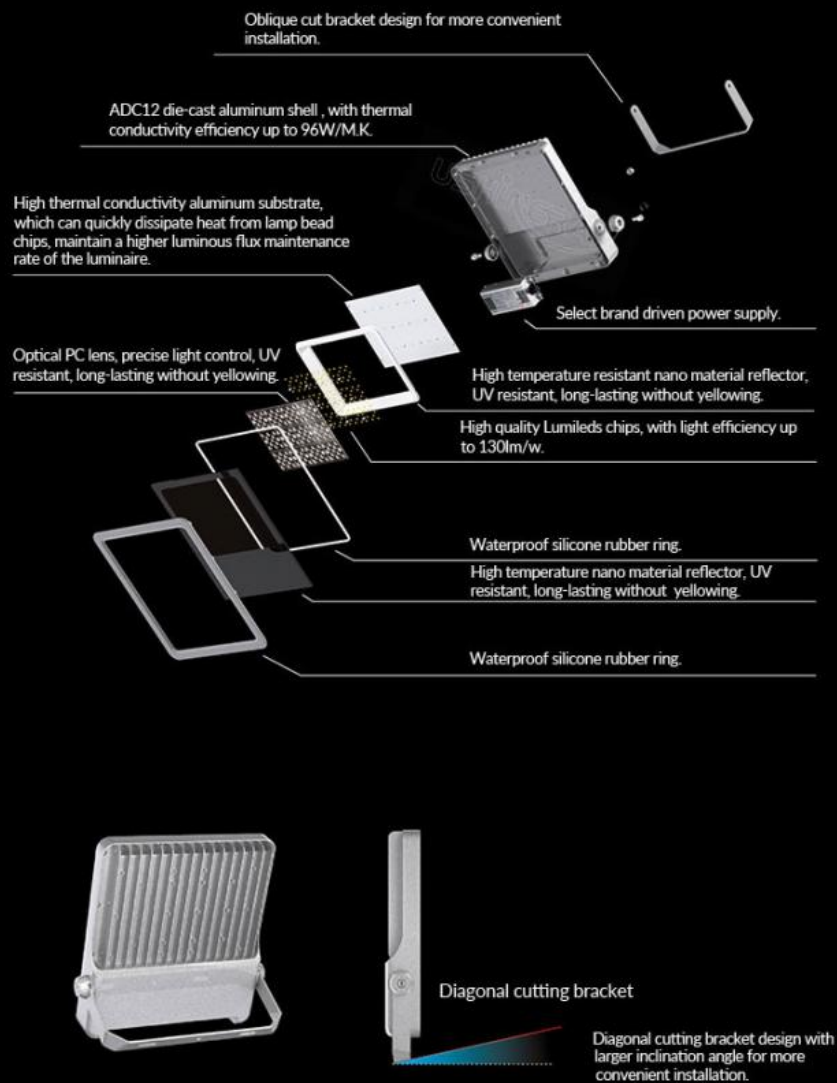


60°



90°

Exploded view



THERMAL MANAGEMENT



Quick heat
dissipation

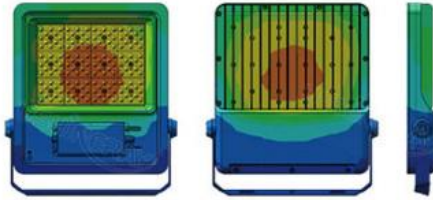


Low
temperature

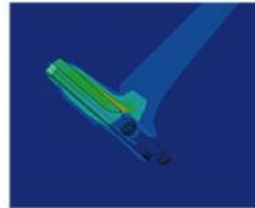


High lifespan

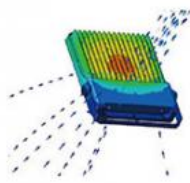
The structure is optimized using advanced
finite element analysis technology
maximize service life.



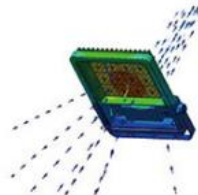
Thermal conductivity



Thermal effect on air



Hot air convection

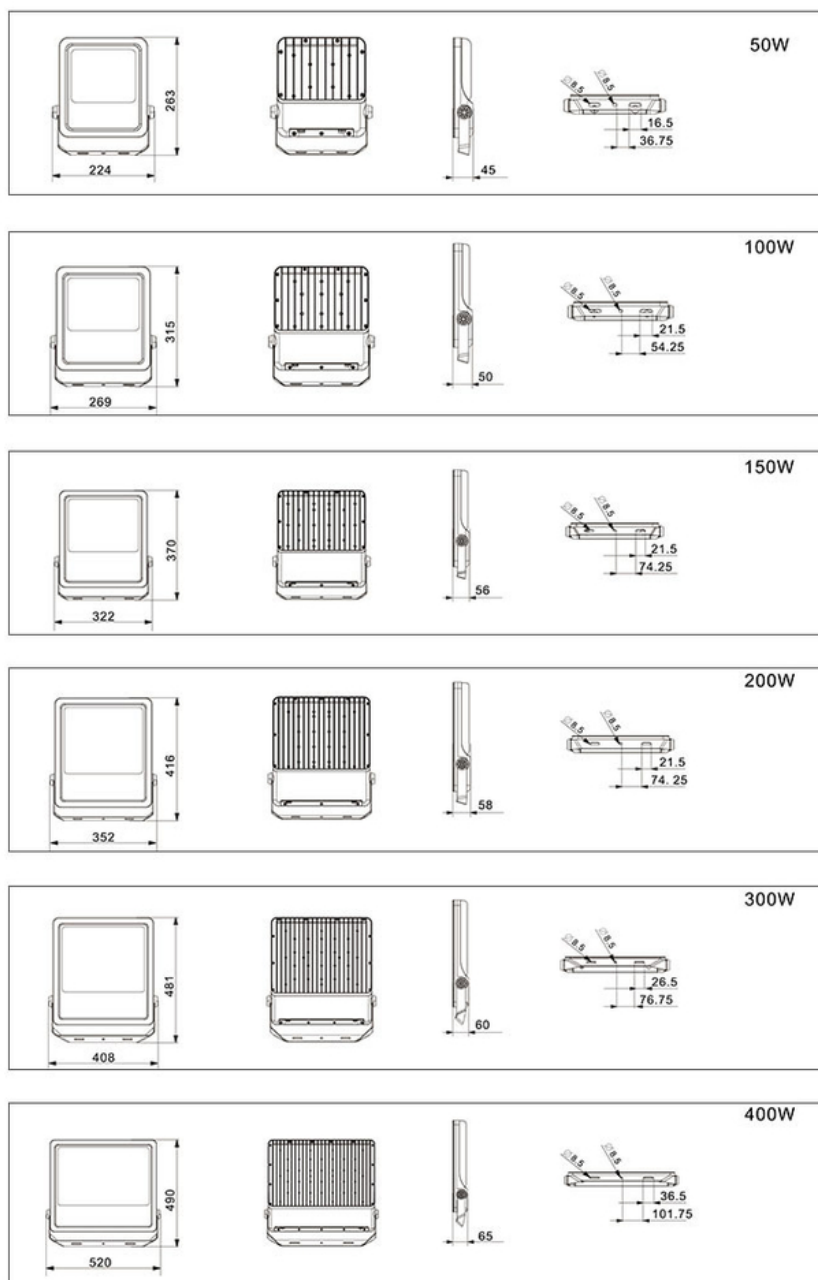


Hot air convection



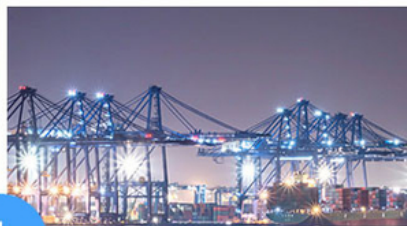
Unit: °C

Product Size(unit:mm)



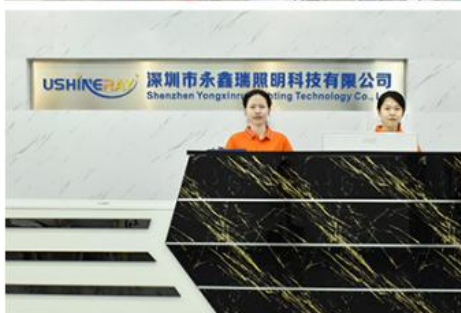


Applications



Company Profiles

OUR FACTORY



PRODUCTION SITE



FAQ

Q1. Are you a manufacturer?

Yes, we have our factory with over 10 years of R&D and manufacturing experience based on ISO quality management since 2011.

Q2. Do you have any MOQ limit for LED light orders?

No MOQ, 1pc for sample checking is available.

Q3. Can I get a lower price for a large quantity of orders?

Yes, please check with our sales staff for the details.

Q4. How about the lead time of ordering?

Our standard sample lead time is 3-5 days, and normal order lead time is 7-10 days. For the large order lead time, please also check with our sales team.

Q5. Can you provide OEM and ODM services?

We can provide OEM and ODM products, with customized label designs on the product and carton box. Or customized carton

box, and laser print logo on the lamp fixture.

Q6. What is the payment terms of your formal order?

We accept payment via TT, Paypal, and Western Union, and we offer EXW, FOB, CIF, and CFR terms.

Q7. How to deal with the defective?

All of our products are produced in a strict quality control system, the defective rate is less than 0.2% according to our shipment records. We offer a 3- 5 years warranty for this product, if there is any defective during the warranty, please provide pictures or videos of the working situation of the defective lights, and we will ship the new lights to you within a few days or send it together with your next order.

 **Shenzhen Yongxinrui Lighting Technology Co., Ltd.**



+8613410523891



joy@ushineray.com



ushineraylight.com

4F, Building C, Junxing Optoelectronic Industrial Park, Fuyuan 2nd Road, FuHai Street, Bao'an District,
Shenzhen