

High Brightness 200W Led Flood Light 30000lm Led Spot Lights Outdoor For Basketball Court

Our Product Introduction

for more products please visit us on ushineraylight.com

Basic Information

- Place of Origin: Shenzhen, Guangdong
- Brand Name: UShineray
- Certification: CE, EMC, LVD, RoHS, FCC
- Model Number: YXR-FL-200W-E
- Minimum Order Quantity: 1pcs
- Packaging Details: 1 pcs in Inner box
- Payment Terms: T/T, Paypal, Western Union
- Supply Ability: 3000 Piece/Pieces per Week



Product Specification

- Power: 200W
- Lamp Luminous Efficiency(lm/w): 30000lm
- Dimmable: Customized
- Lighting Solutions Service: Lighting And Circuitry Design, DIALux Evo Layout, LitePro DLX Layout, Auto CAD Layout
- Material: Aluminum Alloy+Tempered Glass
- Waterproof: IP66
- Applications: Landscape; Building,Square
- Light Source: SMD 2835 LED Chips
- Highlight: 200w led spot lights outdoor, Led Flood Light 30000lm, led spot lights outdoor For Basketball Court



More Images



Product Description

High Brightness 200W LED Flood Light LED Spot Lights Outdoor for Basketball Court Gymnasium

This 200W LED flood light delivers high brightness for basketball courts and gymnasiums, offering superior visibility for sports activities. Its powerful output ensures uniform lighting coverage, enhancing both safety and performance. Designed for outdoor and indoor sports venues, it combines high luminosity with durable construction.

Product Features

Power settings from 50W to 400W with a high light efficacy of 150lm/W.

Beam angles include 30°, 60°, 90°, and 120° to suit various lighting requirements.

Provides 180° adjustability for comprehensive light coverage.

IP66 water resistance and IK08 impact protection for robust performance.

Constructed with die-cast aluminum and finished with an anti-corrosion powder coating.

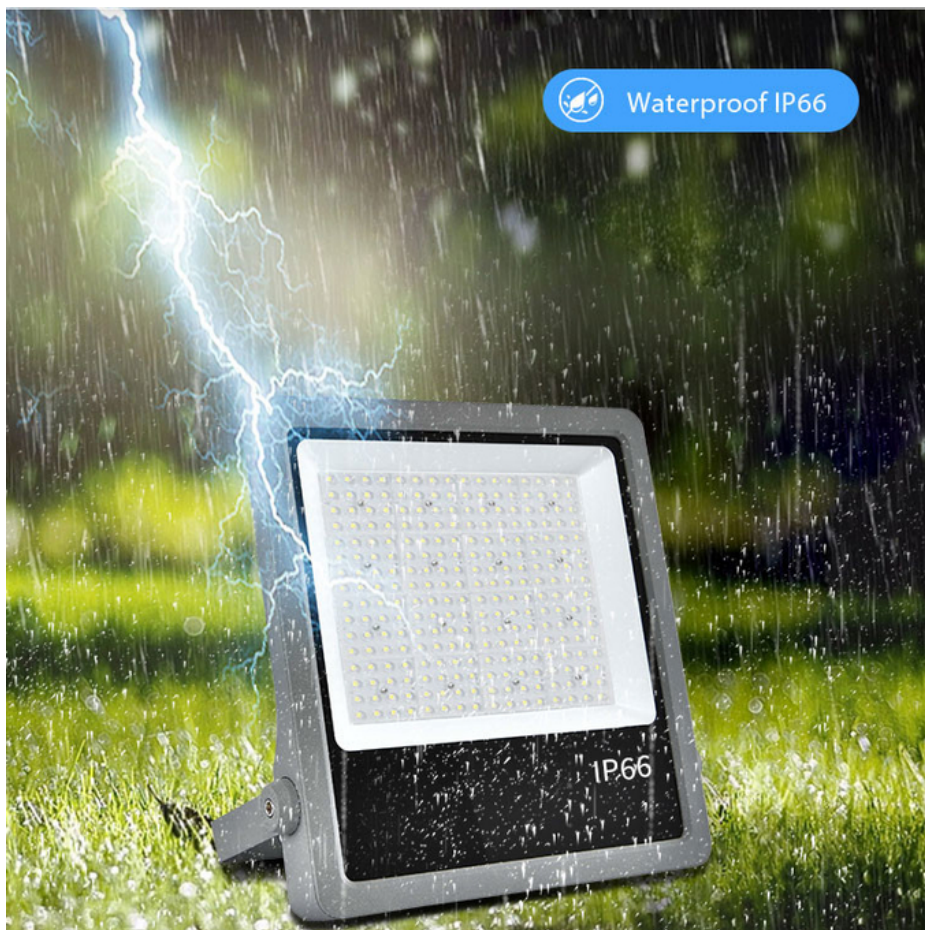
Ultra-thin and streamlined design for a sleek appearance.

Fashionable and refined design for versatile use.

Product Parameter

Model	YXR-FL-200W-E
Wattage	200W
Other Power Options	50W 100W 150W 300W 400W
Lumen	30000±5%lm
Size(mm)	416*352*58
Net Weight	4.6kg
Light Efficacy	150lm/W ±5%
LED	Lumileds 2835
Beam Angle	30°/60°/90°/120°
Color Temperature	2700-6500K
Input Voltage	AC100-277V(Moso)
CRI	≥70Ra
PF	>0.97
THD	15%<THD<20%
Humidity	15%~90% RH, no condensing
Work Temperature	-40~60°C
IP Grade	IP66
IK Grade	IK08
Warranty	5 Years
Life Span	≥50000H
Finish	Sprayed with outdoor special powder
Body Material	PC lens + Aluminum housing
Electronic Safety Grade	Class I
Wire	Rubber cable(3*0.75mm²) L=0.3m

Product Details



Waterproof IP66
Sealed silicone ring and waterproof wiring to prevent rain from entering the lamp.



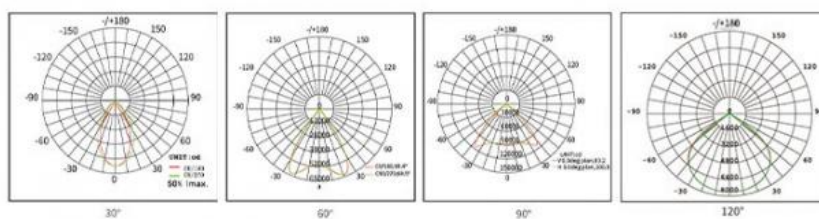
Various brands of power supply to choose from
Intelligent C chip control circuit with short circuit over-voltage, and low voltage protection, more stable,
and longer life.



Flexible installation bracket
The rotatable multi-directional lighting installation is convenient.



Respiratory heat dissipation hole
Efficient heat dissipation breathing hole, effective heat dissipation and increased product service life.



Various beam angle
Accurate light distribution: 30°/60°/90°/120°, suitable for different places.



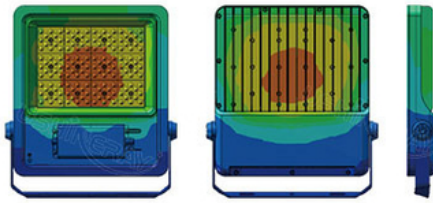
Quick heat
dissipation



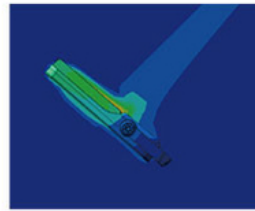
Low
temperature



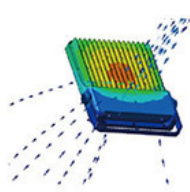
High lifespan



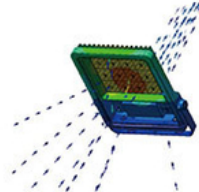
Thermal conductivity



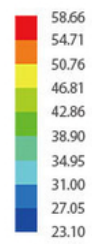
Thermal effect on air



Hot air convection



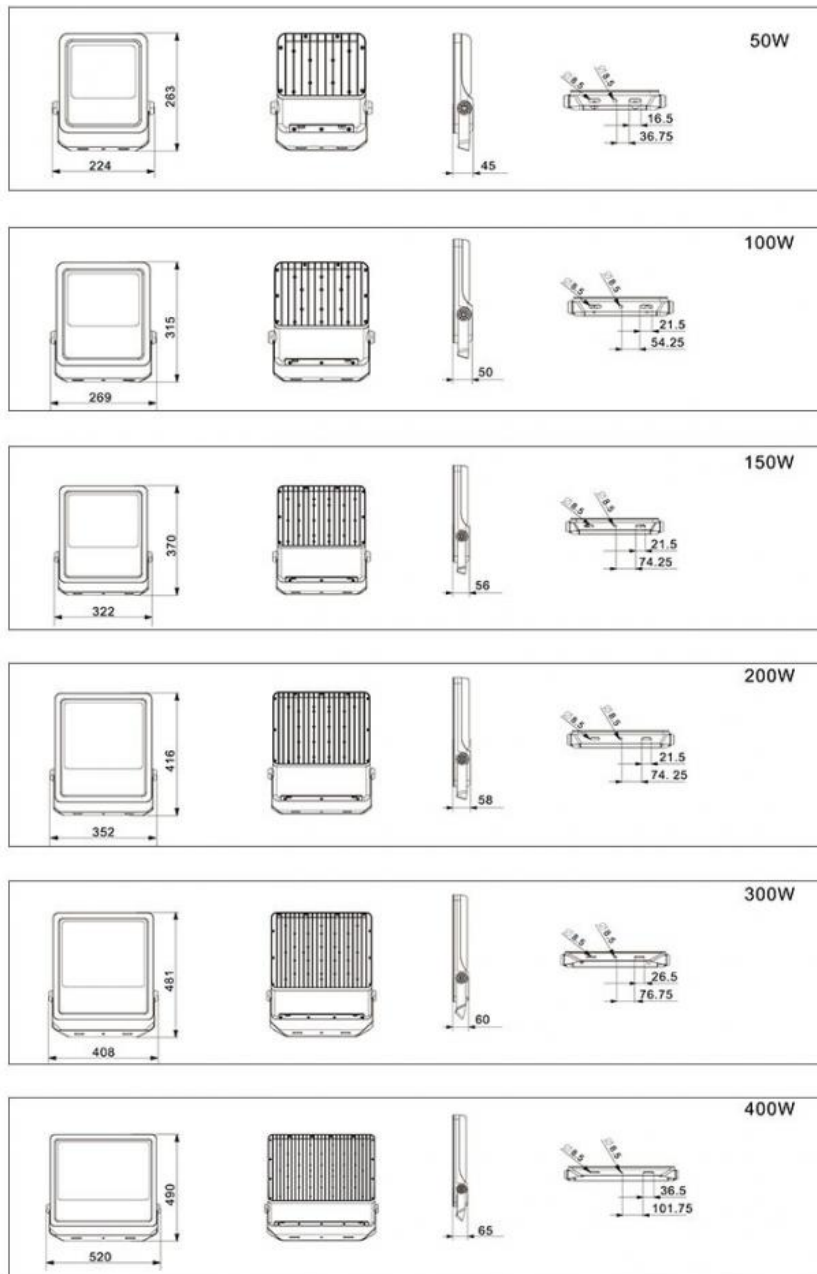
Hot air convection



Unit: °C

Efficient heat dissipation
Integrated heat sink for longer life.

Product Size(unit:mm)



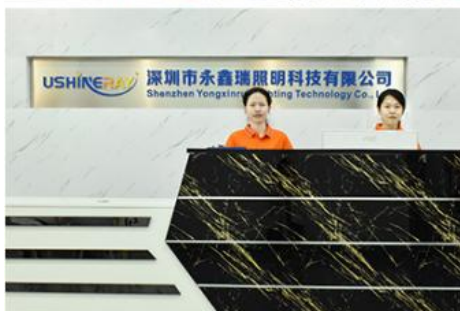


Applications



Company Profiles

OUR FACTORY



PRODUCTION SITE





Guangzhou International Lighting Exhibition



FAQ

Q1. Are you a manufacturer?

Yes, we have our factory with over 10 years of R&D and manufacturing experience based on ISO quality management since 2011.

Q2. Do you have any MOQ limit for LED light orders?

No MOQ, 1pc for sample checking is available.

Q3. Can I get a lower price for a large quantity of orders?

Yes, please check with our sales staff for the details.

Q4. How about the lead time of ordering?

Our standard sample lead time is 3-5 days, and normal order lead time is 7-10 days. For the large order lead time, please also check with our sales team.

Q5. Can you provide OEM and ODM services?

We can provide OEM and ODM products, with customized label designs on the product and carton box. Or customized carton box, and laser print logo on the lamp fixture.

Q6. What is the payment terms of your formal order?

We accept payment via TT, Paypal, and Western Union, and we offer EXW, FOB, CIF, and CFR terms.

Q7. How to deal with the defective?

All of our products are produced in a strict quality control system, the defective rate is less than 0.2% according to our shipment records. We offer a 3- 5 years warranty for this product, if there is any defective during the warranty, please provide pictures or videos of the working situation of the defective lights, and we will ship the new lights to you within a few days or send it together with your next order.

 **Shenzhen Yongxinrui Lighting Technology Co., Ltd.**



+8613410523891



joy@ushineray.com



ushineraylight.com

4F, Building C, Junxing Optoelectronic Industrial Park, Fuyuan 2nd Road, FuHai Street, Bao'an District,
Shenzhen