

High Power 300W Outdoor LED Flood Lights 200w Smart Flood Light For Playground

Our Product Introduction

for more products please visit us on ushineraylight.com

Basic Information

- Place of Origin: Shenzhen, Guangdong
- Brand Name: UShineray
- Certification: CE, EMC, LVD, RoHS, FCC
- Model Number: YXR-FL-300W-E
- Minimum Order Quantity: 1pcs
- Packaging Details: 1 pcs in Inner box
- Payment Terms: T/T, Paypal, Western Union
- Supply Ability: 3000 Piece/Pieces per Week



Product Specification

- Power: 300W
- Lamp Luminous Efficiency(lm/w): 45000lm
- Color Temperature(cct): 3000-6500K
- Lighting Solutions Service: Lighting And Circuitry Design, DIALux Evo Layout, LitePro DLX Layout, Auto CAD Layout
- Material: Aluminum Alloy+Tempered Glass
- Waterproof: IP66
- Applications: Garden, Building, Landscape
- Light Source: SMD 2835
- Highlight: 300w outdoor led flood lights, 200w smart flood light For Playground, outdoor led flood lights 200w



More Images



Product Description

High Power 300W Outside Floodlights 200W LED Flood Light for Playground Arena Sports Field
Illuminate large outdoor areas like playgrounds and sports fields with this high-power 300W floodlight, featuring 200W LED technology. It provides intense and even lighting, perfect for ensuring safety and visibility during recreational and sports activities. The robust design is suitable for high-traffic and demanding environments.

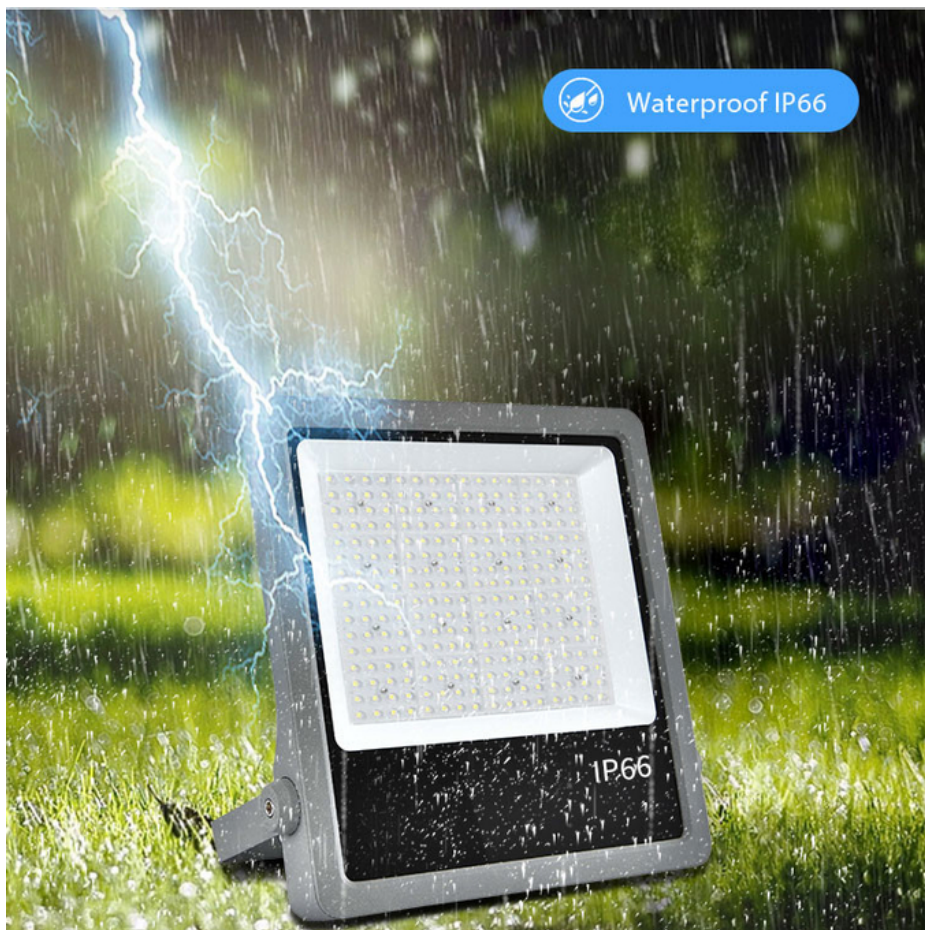
Product Features

Ranges from 50W to 400W with a light efficacy of 150lm/W for energy-efficient lighting.
Adjustable beam angles: 30°, 60°, 90°, and 120° for flexible lighting options.
Full 180° adjustability of the lamp ensures optimal illumination.
IP66-rated for dust and water resistance, and IK08-rated for impact protection.
Made with anti-corrosion powder-coated die-cast aluminum for durability.
Features a thin and streamlined aesthetic for a contemporary look.
Stylish and sophisticated, fitting various design needs.

Product Parameter

Model	YXR-FL-300W-E
Wattage	300W
Other Power Options	50W 100W 150W 200W 400W
Lumen	45000±5%lm
Size(mm)	481*408*60
Net Weight	5.8kg
Light Efficacy	150lm/W ±5%
LED	Lumileds 2835
Beam Angle	30°/60°/90°/120°
Color Temperature	2700-6500K
Input Voltage	AC100-277V(Moso)
CRI	≥70Ra
PF	>0.97
THD	15%<THD<20%
Humidity	15%~90% RH, no condensing
Work Temperature	-40~60°C
IP Grade	IP66
IK Grade	IK08
Warranty	5 Years
Life Span	≥50000H
Finish	Sprayed with outdoor special powder
Body Material	PC lens + Aluminum housing
Electronic Safety Grade	Class I
Wire	Rubber cable(3*1mm²) L=0.3m

Product Details



Waterproof IP66
Sealed silicone ring and waterproof wiring to prevent rain from entering the lamp.



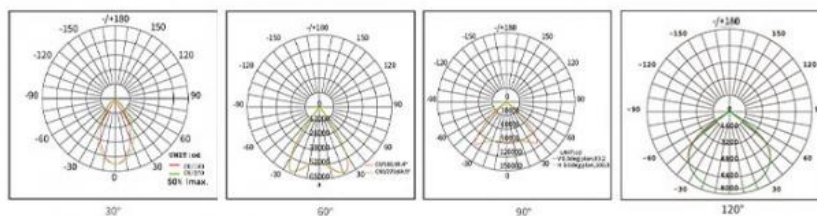
Flexible installation bracket
The rotatable multi-directional lighting installation is convenient.



Respiratory heat dissipation hole
Efficient heat dissipation breathing hole, effective heat dissipation and increased product service life.



Various brands of power supply to choose from
Intelligent C chip control circuit with short circuit over-voltage, and low voltage protection, more stable,
and longer life.



Various beam angle
Accurate light distribution: 30°/60°/90°/120°, suitable for different places.



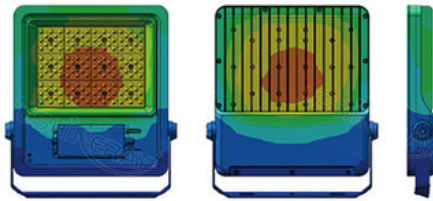
Quick heat
dissipation



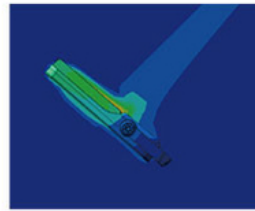
Low
temperature



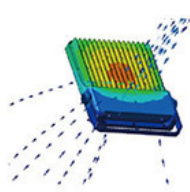
High lifespan



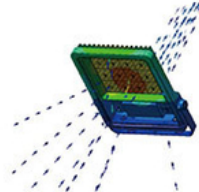
Thermal conductivity



Thermal effect on air



Hot air convection



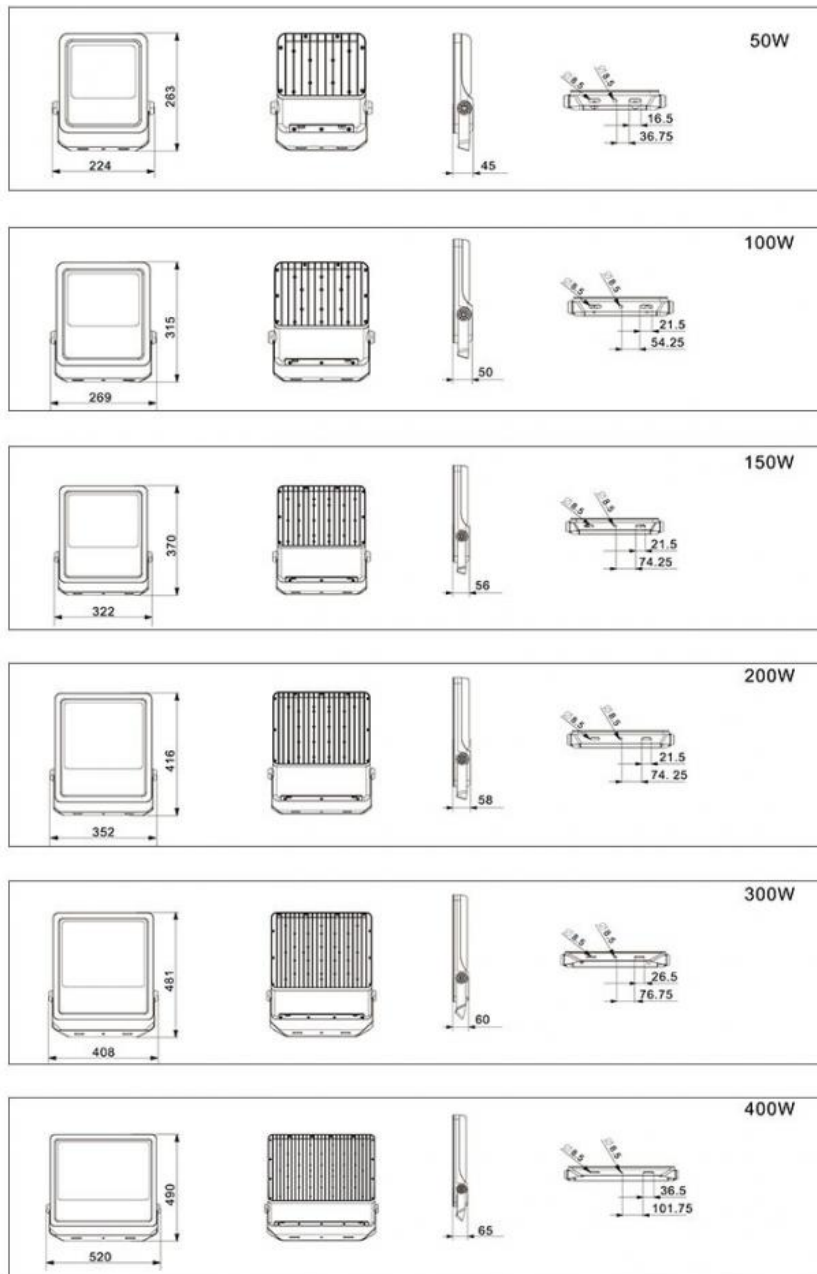
Hot air convection



Unit: °C

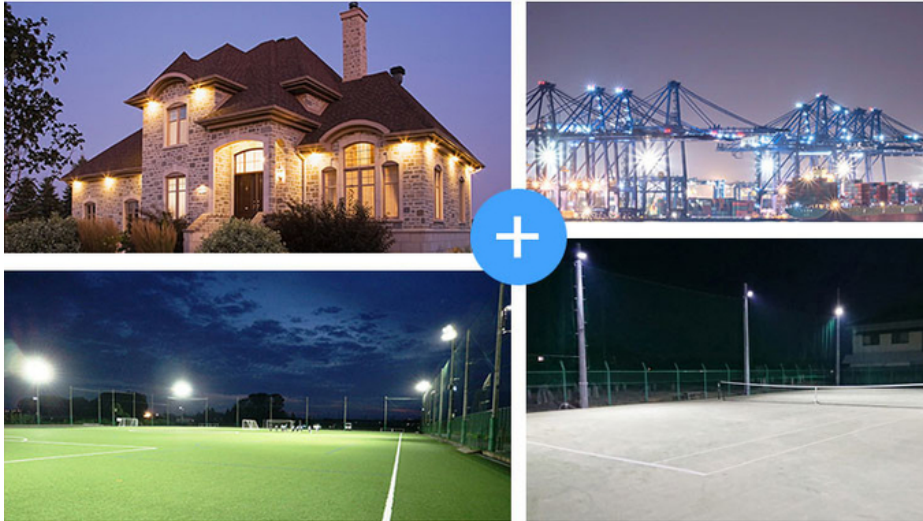
Efficient heat dissipation
Integrated heat sink for longer life.

Product Size(unit:mm)





Applications



FAQ

Q1. Are you a manufacturer?

Yes, we have our factory with over 10 years of R&D and manufacturing experience based on ISO quality management since 2011.

Q2. Do you have any MOQ limit for LED light orders?

No MOQ, 1pc for sample checking is available.

Q3. Can I get a lower price for a large quantity of orders?

Yes, please check with our sales staff for the details.

Q4. How about the lead time of ordering?

Our standard sample lead time is 3-5 days, and normal order lead time is 7-10 days. For the large order lead time, please also check with our sales team.

Q5. Can you provide OEM and ODM services?

We can provide OEM and ODM products, with customized label designs on the product and carton box. Or customized carton box, and laser print logo on the lamp fixture.

Q6. What is the payment terms of your formal order?

We accept payment via TT, Paypal, and Western Union, and we offer EXW, FOB, CIF, and CFR terms.

Q7. How to deal with the defective?

All of our products are produced in a strict quality control system, the defective rate is less than 0.2% according to our shipment records. We offer a 3- 5 years warranty for this product, if there is any defective during the warranty, please provide pictures or videos of the working situation of the defective lights, and we will ship the new lights to you within a few days or send it together with your next order.

USHINERAY Shenzhen Yongxinrui Lighting Technology Co., Ltd.



+8613410523891



joy@ushineray.com



ushineraylight.com

4F, Building C, Junxing Optoelectronic Industrial Park, Fuyuan 2nd Road, FuHai Street, Bao'an District, Shenzhen