

Glare-Free Reflector Flood Light Stand 400W 100w Led Floodlight For Golf Course

Our Product Introduction

for more products please visit us on ushineraylight.com

Basic Information

- Place of Origin: Shenzhen, Guangdong, China
- Brand Name: UShineray
- Certification: CE, EMC, LVD, RoHS, FCC
- Model Number: YXR-FL-400W-E
- Minimum Order Quantity: 1 pcs
- Packaging Details: 1 pcs in Inner box
- Payment Terms: T/T, Paypal, Western Union
- Supply Ability: 3000 Piece/Pieces per Week



Product Specification

- Power: 400W
- Lamp Luminous Efficiency(lm/w): 60000lm
- Input Voltage(v): AC100-240V
- Lighting Solutions Service: Lighting And Circuitry Design, DIALux Evo Layout, LitePro DLX Layout, Auto CAD Layout
- Material: Aluminum Alloy+Tempered Glass
- Waterproof: IP66
- Applications: Sport Field, Garden, Building
- Light Source: SMD 2835 LED Chips
- Highlight: 100w led floodlight for golf course, 100w flood light stand, for golf course flood light stand



More Images



Product Description

Glare-Free Reflector 400W Flood Light Stand 100W LED Floodlight for Golf Course Driving Range
Featuring a glare-free reflector, this 400W flood light with a 100W LED component is ideal for golf course driving ranges. It ensures bright, even illumination while minimizing glare, enhancing visibility and comfort for golfers. The stand design allows flexible positioning, making it perfect for both practice and play.

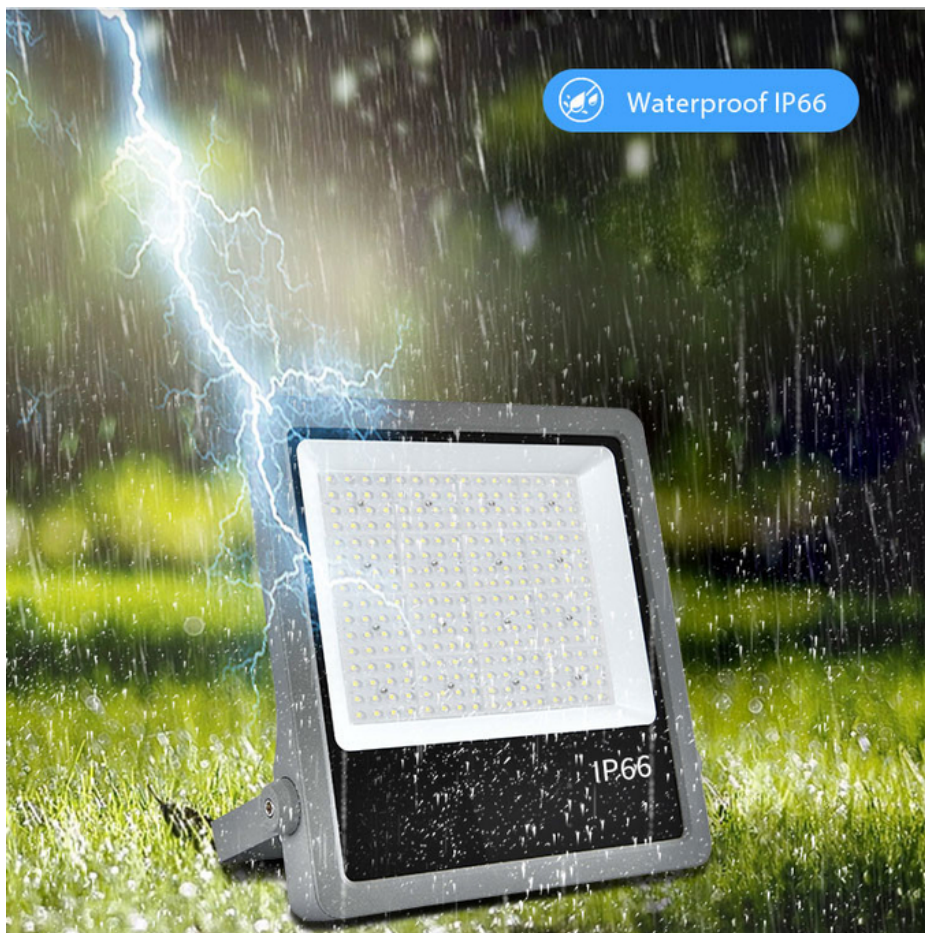
Product Features

Power capacity from 50W to 400W with a high light efficacy of 150lm/W.
Offers beam angles of 30°, 60°, 90°, and 120° for diverse lighting needs.
Adjustable up to 180° for versatile lighting placement.
IP66-rated for excellent protection against water and dust, with IK08 impact resistance.
Die-cast aluminum construction with anti-corrosion powder coating ensures longevity.
Ultra-thin design with a modern, streamlined appearance.
Exquisite and fashionable, adding a touch of elegance to any setting.

Product Parameter

Model	YXR-FL-400W-E
Wattage	400W
Other Power Options	50W 100W 150W 200W 300W
Lumen	60000±5%lm
Size(mm)	490*520*65
Net Weight	8.3kg
Light Efficacy	150lm/W ±5%
LED	Lumileds 2835
Beam Angle	30°/60°/90°/120°
Color Temperature	2700-6500K
Input Voltage	AC100-277V(Moso)
CRI	≥70Ra
PF	>0.97
THD	15%<THD<20%
Humidity	15%~90% RH, no condensing
Work Temperature	-40~60°C
IP Grade	IP66
IK Grade	IK08
Warranty	5 Years
Life Span	≥50000H
Finish	Sprayed with outdoor special powder
Body Material	PC lens + Aluminum housing
Electronic Safety Grade	Class I
Wire	Rubber cable(3*1mm ²) L=0.3m

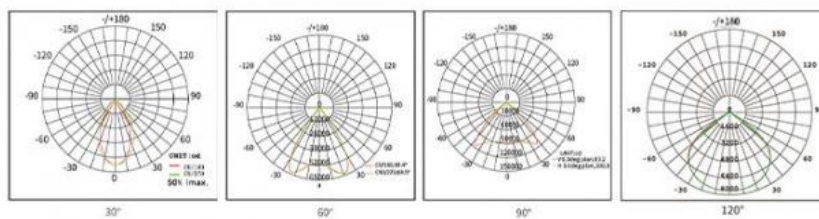
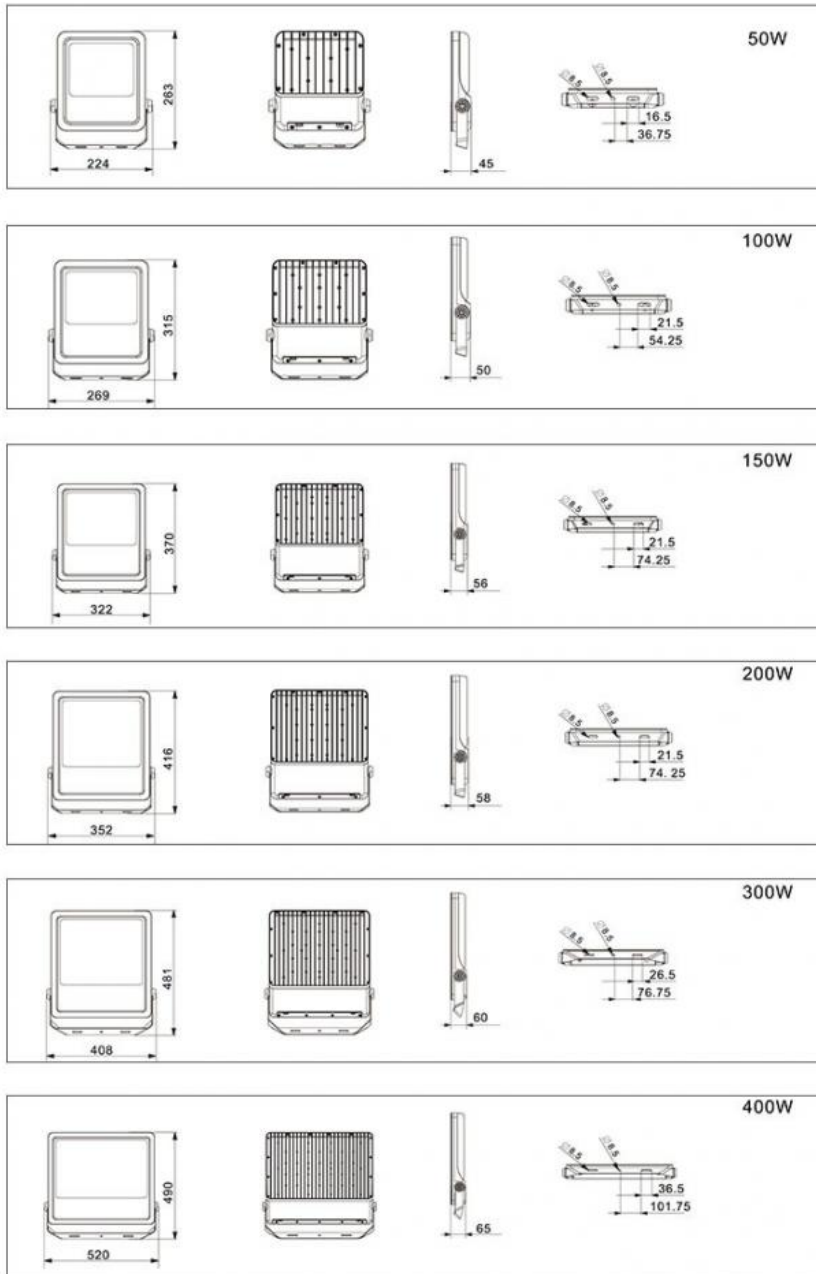
Product Details



Waterproof IP66

Sealed silicone ring and waterproof wiring to prevent rain from entering the lamp.

Product Size(unit:mm)



Various beam angle

Accurate light distribution: 30°/60°/90°/120°, suitable for different places.



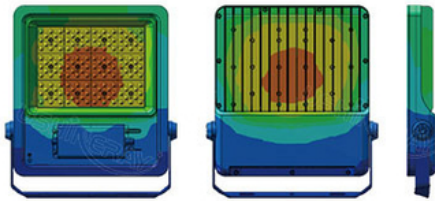
Quick heat
dissipation



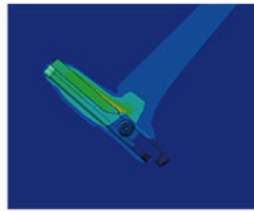
Low
temperature



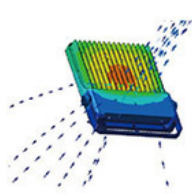
High lifespan



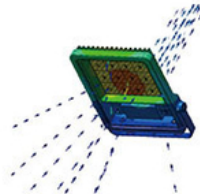
Thermal conductivity



Thermal effect on air



Hot air convection

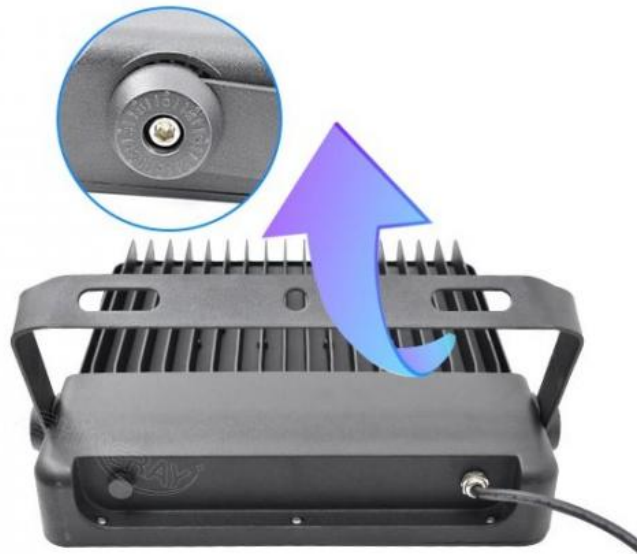


Hot air convection



Unit: °C

Efficient heat dissipation
Integrated heat sink for longer life.



Flexible installation bracket
The rotatable multi-directional lighting installation is convenient.



Respiratory heat dissipation hole
Efficient heat dissipation breathing hole, effective heat dissipation and increased product service life.

Applications



FAQ

Q1. Are you a manufacturer?

Yes, we have our factory with over 10 years of R&D and manufacturing experience based on ISO quality management since 2011.

Q2. Do you have any MOQ limit for LED light orders?

No MOQ, 1pc for sample checking is available.

Q3. Can I get a lower price for a large quantity of orders?

Yes, please check with our sales staff for the details.

Q4. How about the lead time of ordering?

Our standard sample lead time is 3-5 days, and normal order lead time is 7-10 days. For the large order lead time, please also check with our sales team.

Q5. Can you provide OEM and ODM services?

We can provide OEM and ODM products, with customized label designs on the product and carton box. Or customized carton box, and laser print logo on the lamp fixture.

Q6. What is the payment terms of your formal order?

We accept payment via TT, Paypal, and Western Union, and we offer EXW, FOB, CIF, and CFR terms.

Q7. How to deal with the defective?

All of our products are produced in a strict quality control system, the defective rate is less than 0.2% according to our shipment records. We offer a 3- 5 years warranty for this product, if there is any defective during the warranty, please provide pictures or videos of the working situation of the defective lights, and we will ship the new lights to you within a few days or send it together with your next order.

