

Super Bright Outdoor LED Flood Lights 50W 100w Indoor Flood Lights For Security Lighting

Our Product Introduction

for more products please visit us on ushineraylight.com

Basic Information

- Place of Origin: Shenzhen, Guangdong, China
- Brand Name: UShineray
- Certification: CE, EMC, LVD, RoHS
- Model Number: YXR-FL-50W-F
- Minimum Order Quantity: 1 pcs
- Packaging Details: 1 pcs in Inner box
- Payment Terms: T/T, Paypal, Western Union
- Supply Ability: 3000 Piece/Pieces per Week



Product Specification

- Power: 50W
- Lamp Luminous Efficiency(lm/w): 7500lm
- Item Type: Flood Lights
- Lighting Solutions Service: Lighting And Circuitry Design, DIALux Evo Layout, LitePro DLX Layout, Auto CAD Layout
- Lamp Body Material: Aluminum Alloy+Tempered Glass
- Ip Rating: IP66
- Warranty: 5 Years
- Light Source: SMD 2835
- Highlight: outdoor led flood lights 50w, super bright outdoor led flood lights, indoor flood lights for security lighting



More Images



Product Description

Super Bright 50W 100W LED Flood Indoor Flood Lights for Security Lighting

Enhance security with these super bright 50W and 100W LED flood lights, perfect for indoor applications. Designed to provide powerful and consistent illumination, these lights are ideal for safeguarding areas where clear visibility is crucial. Their high brightness ensures effective surveillance and security coverage in any indoor setting.

Product Features

Power options range from 50W to 300W.

Light efficacy is 150lm/W, with a 240W model offering 135lm/W.

Available beam angles include 30°, 60°, 90°, 120°, T2, T3, and T4.

The lamp provides full 180° adjustability for versatile light placement.

Designed with IP66 rating for dust and water protection and IK08 for impact resistance.

Constructed from die-cast aluminum with a powder-coated anti-corrosion finish.

Features an ultra-thin, streamlined design for a modern and stylish appearance.

Product Parameter

Model	YXR-FL-50W-F
Wattage	50W
Other Power Options	100W 150W 200W 240W 300W
Lumen	7500±5%lm
Size(mm)	290*230*48
Net Weight	1.3kg
Light Efficacy	150lm/W ±5%
Beam Angle	30°/60°/90°/120°/T2/T3/T4
LED	Lumileds 2835
Color Temperature	3000K-6500K
CRI	≥70Ra
Input Voltage	AC100-277V(MOSO)
PF	>0.97
THD	15%<THD<20%
Work Temperature	-40~60°C
Junction Temp(LED)	≤80°C
Humidity	15%~90% RH, no condensing
IP Grade	IP66
IK Grade	IK08
Warranty	5 Years
Life Span	≥50000H
Finish	Sprayed with outdoor special powder
Material	Aluminum+PC+Glass
Electronic Safety Grade	Class I
Wire	Rubber cable(3*0.75mm²) L=0.5m

Product Details



150
lm/w

LED FLOOD LIGHT

50W~300W 30°/60°/90°/120°/T2/T3/T4



High brightness



Good quality



IES test report



IP66 Structural Waterproof Design

Waterproof, dustproof, high temperature corrosion resistant
suitable for outdoor use in various harsh weather conditions



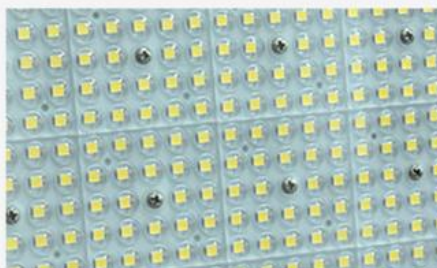
Water
Proof



Lightning
Protection



Show Details



01

High lumen chip

With high lumen chips to maximum the output, the whole lamp light efficiency is up to 150lm/W temperature <70°C.

02

Professional optical lens

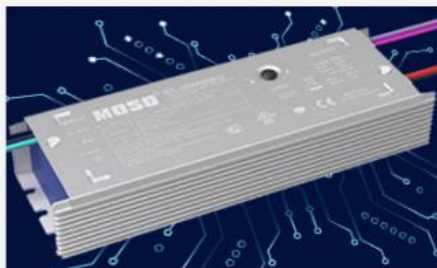
Different beam angles are optional:
30°/60°/90°/120°/T2/T3/T4
meeting the requirement of
professional light distribution,
restraining the dazzle light and
spilling light effectively.



03

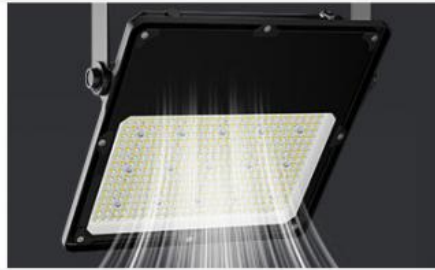
Qualified brand driver

High efficiency MOSO driver supply
is used, constant current and voltage,
with shortcircuit, over-voltage over-
current, over temperature protection
the efficiency up to 95%.



Strongly waterproof, wind and earthquake resistant

The whole lamp is IP66 designed, waterproof, dustproof and corrosion-resistant. The bracket has a scale gear buckle and the angle is 180° adjustable.



THERMAL MANAGEMENT



Quick heat
dissipation

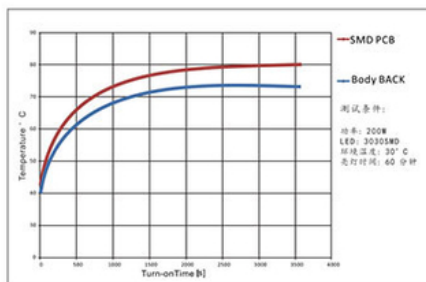
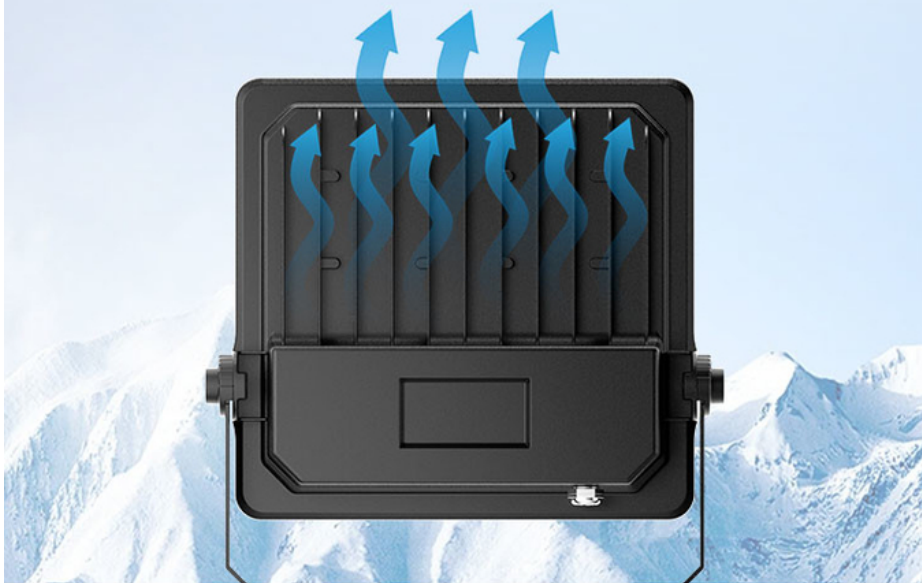


Low
temperature

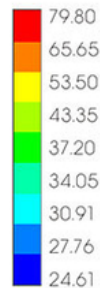


High lifespan

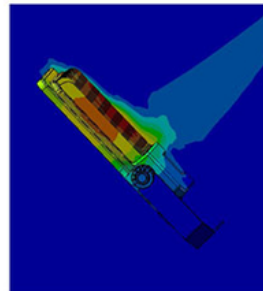
The structure is optimized using advanced finite element analysis technology maximize service life.



Heating curve



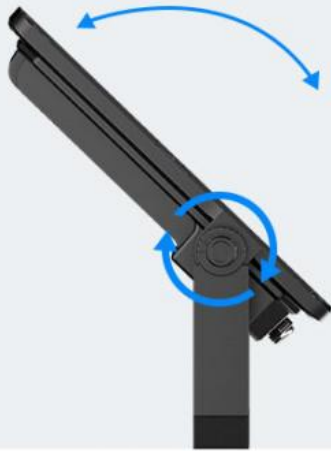
Temperature (Copy) °C



Effect of lamp heat on air

Accurate Scale And Angle Adjustment

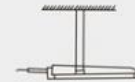
Large-angle adjustable bracket, flexible adjustment of light direction, unrestricted installation, wider illumination range.



Wall installation

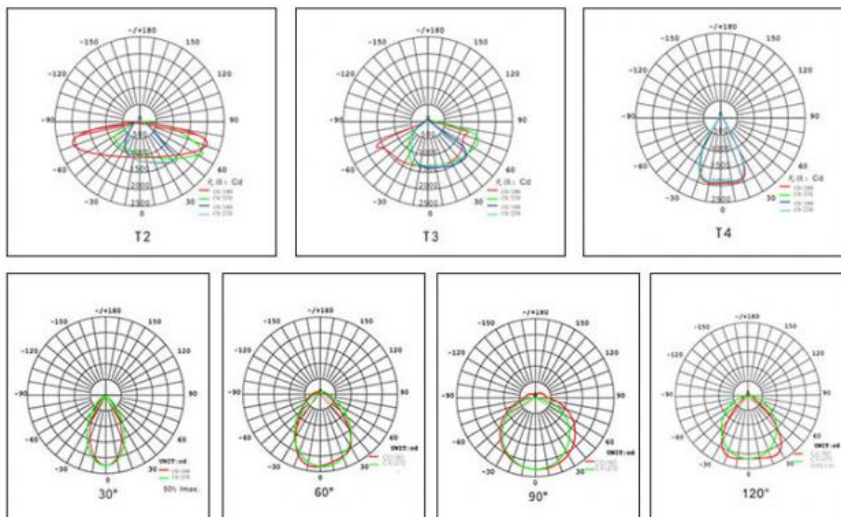


Ground installation

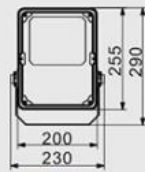


Ceiling installation

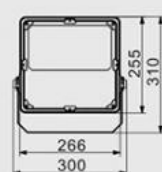
Light Distribution Curve Illumination Diagram



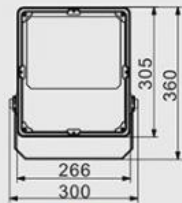
Product Size: unit(mm)



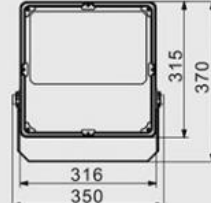
50W



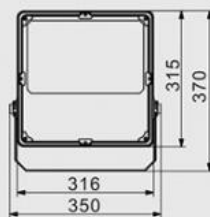
100W



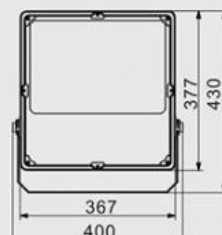
150W



200W



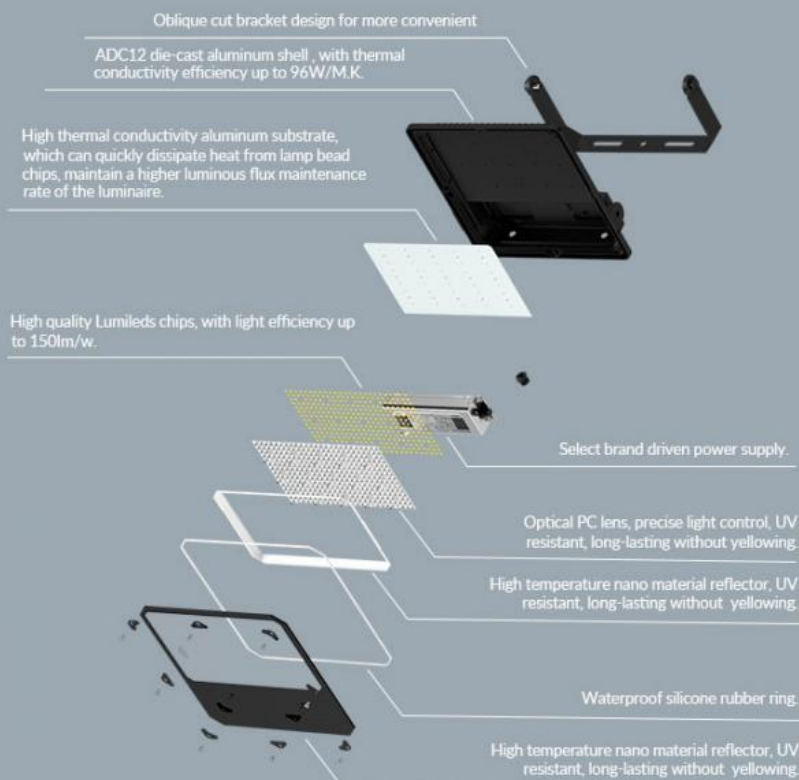
240W



300W



Structural exploded view:



Six Reasons To Choose Us

#



IP66
Water Proof



Energy
Saving



Thickened
Tempered Glass



Corrosion And
Rust-resistant



Adjustable
Stand



Durable



Applications



Company Profiles

OUR FACTORY

COMPANY POWER & UNIQUE STRENGTHS

Plant area of 2600 m²

2000 pieces per day

Source Factory

Support customization

Quality service



PRODUCTION SITE





Exhibition

Shenzhen Yongxinrui Lighting Technology Co., Ltd



Guangzhou International Lighting Exhibition



Q1. Are you a manufacturer?

Yes, we have our factory with over 10 years of R&D and manufacturing experience based on ISO quality management since 2011.

Q2. Do you have any MOQ limit for LED light orders?

No MOQ, 1pc for sample checking is available.

Q3. Can I get a lower price for a large quantity of orders?

Yes, please check with our sales staff for the details.

Q4. How about the lead time of ordering?

Our standard sample lead time is 3-5 days, and normal order lead time is 7-10 days. For the large order lead time, please also check with our sales team.

Q5. Can you provide OEM and ODM services?

We can provide OEM and ODM products, with customized label designs on the product and carton box. Or customized carton box, and laser print logo on the lamp fixture.

Q6. What is the payment terms of your formal order?

We accept payment via TT, Paypal, and Western Union, and we offer EXW, FOB, CIF, and CFR terms.

Q7. How to deal with the defective?

All of our products are produced in a strict quality control system, the defective rate is less than 0.2% according to our shipment records. We offer a 3- 5 years warranty for this product, if there is any defective during the warranty, please provide pictures or videos of the working situation of the defective lights, and we will ship the new lights to you within a few days or send it together with your next order.

 **Shenzhen Yongxinrui Lighting Technology Co., Ltd.**



+8613410523891



joy@ushineray.com



ushineraylight.com

4F, Building C, Junxing Optoelectronic Industrial Park, Fuyuan 2nd Road, FuHai Street, Bao'an District,
Shenzhen