

High Efficiency 150W Flood Light 50 Watt Flood Light Fixtures For Garden Lighting Landscaping

Our Product Introduction

for more products please visit us on ushineraylight.com

Basic Information

- Place of Origin: Guangdong, China
- Brand Name: UShineray
- Certification: CE, EMC, LVD, RoHS
- Model Number: YXR-FL-150W-F
- Minimum Order Quantity: 1 pcs
- Packaging Details: 1 pcs in Inner box
- Payment Terms: T/T, Paypal, Western Union
- Supply Ability: 3000 Piece/Pieces per Week



Product Specification

- Power: 150W
- Lamp Luminous Efficiency(lm/w): 22500lm
- Color Temperature(cct): 3000-6500K
- Input Voltage(v): AC100-240V
- Lamp Body Material: Aluminum Alloy+Tempered Glass
- Waterproof: IP66
- Warranty: 5 Years
- Light Source: SMD 2835 LED Chips
- Highlight: 150w flood light fixtures, 150w portable flood light



More Images



Product Description

High-Efficiency 150W Flood Light And 50W Flood Light Fixtures For Garden Lighting And Landscaping
Enhance your garden lighting and landscaping with our high-efficiency 150W flood light and 50W flood light fixtures. Designed for optimal performance, these flood lights provide bright, consistent illumination, perfect for highlighting pathways, plants, and architectural features. With a robust build and IP65 waterproof rating, they withstand all weather conditions, ensuring long-lasting reliability. The 150W flood light offers powerful coverage for large areas, while the 50W flood light is ideal for accent lighting. Upgrade your outdoor space with our energy-efficient LED flood lights, delivering superior brightness and energy savings.

Product Features

Available power options from 50W to 300W.

Light efficacy of 150lm/W, with a 240W version providing 135lm/W.

Includes beam angles: 30°, 60°, 90°, 120°, T2, T3, and T4.

Features 180° adjustability for versatile lighting configurations.

IP66 rated for water and dust resistance, and IK08 for impact protection.

Die-cast aluminum construction with an anti-corrosion powder coat ensures durability.

Ultra-thin and streamlined appearance for a sleek, modern look.

Product Parameter

Model	YXR-FL-150W-F
Wattage	150W
Other Power Options	100W 200W 240W 300W
Lumen	22500±5%lm
Size(mm)	360*300*53
Net Weight	2.8kg
Light Efficacy	150lm/W ±5%
Beam Angle	30°/60°/90°/120°/T2/T3/T4
LED	Lumileds 2835
Color Temperature	3000K-6500K
CRI	≥70Ra
Input Voltage	AC100-277V(MOSO)
PF	>0.97
THD	15%<THD<20%
Work Temperature	-40~60°C
Junction Temp(LED)	≤80°C
Humidity	15%~90% RH, no condensing
IP Grade	IP66
IK Grade	IK08
Warranty	5 Years
Life Span	≥50000H
Finish	Sprayed with outdoor special powder
Material	Aluminum+PC+Glass
Electronic Safety Grade	Class I
Wire	Rubber cable(3*0.75mm²) L=0.3m

Product Details

IP66 Structural Waterproof Design

Waterproof, dustproof, high temperature corrosion resistant
suitable for outdoor use in various harsh weather conditions



Water
Proof



Lightning
Protection



50W

100W

150W

200W

300W

150
lm/w

LED FLOOD LIGHT

50W~300W 30°/60°/90°/120°/T2/T3/T4



High brightness



Good quality



IES test report



Show Details



01

High lumen chip

With high lumen chips to maximum the output, the whole lamp light efficiency is up to 150lm/W temperature <70°C.

02

Professional optical lens

Different beam angles are optional: 30°/60°/90°/120°/T2/T3/T4 meeting the requirement of professional light distribution, restraining the dazzle light and spilling light effectively.



03

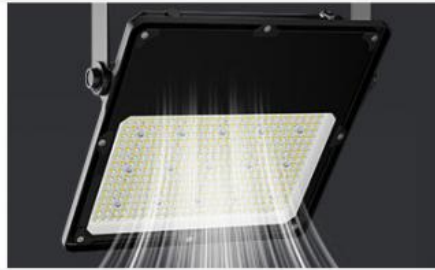
Qualified brand driver

High efficiency MOSO driver supply is used, constant current and voltage, with shortcircuit, over-voltage over-current, over temperature protection the efficiency up to 95%.

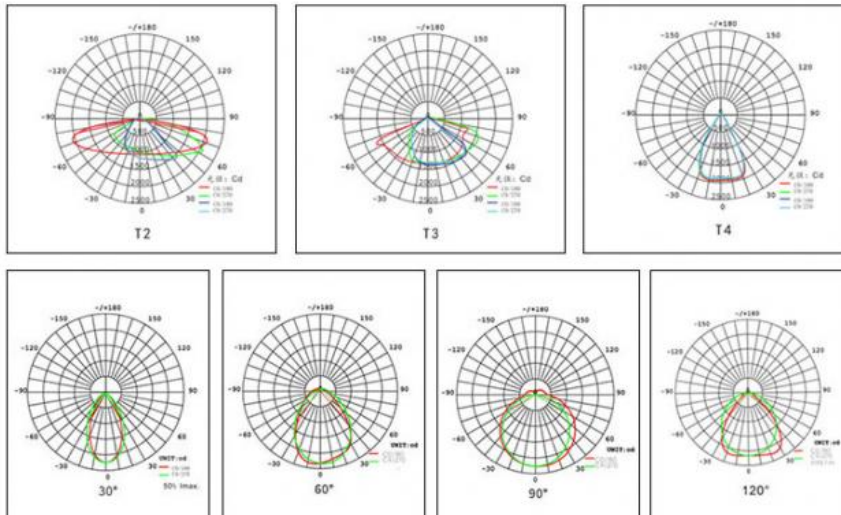


Strongly waterproof, wind and earthquake resistant

The whole lamp is IP66 designed, waterproof, dustproof and corrosion-resistant. The bracket has a scale gear buckle and the angle is 180° adjustable.



Light Distribution Curve Illumination Diagram



Accurate Scale And Angle Adjustment

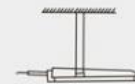
Large-angle adjustable bracket, flexible adjustment of light direction, unrestricted installation, wider illumination range.



Wall installation



Ground installation



Ceiling installation

THERMAL MANAGEMENT



Quick heat
dissipation

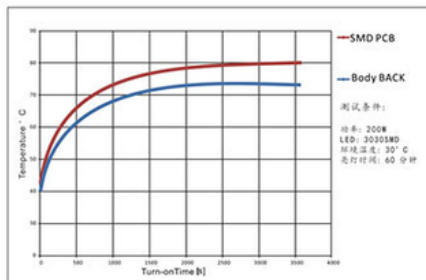
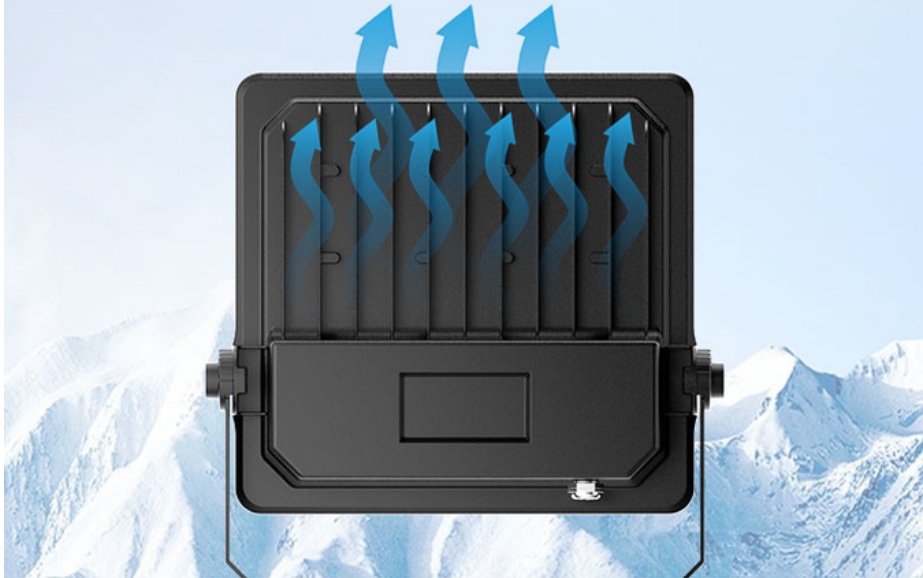


Low
temperature

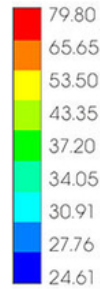


High lifespan

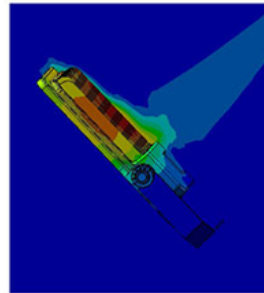
The structure is optimized using advanced
finite element analysis technology
maximize service life.



Heating curve

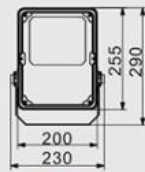


Temperature (Copy) °C

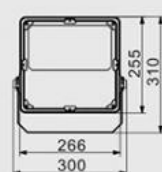


Effect of lamp heat on air

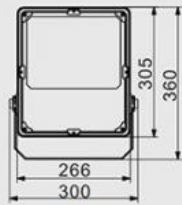
Product Size: unit(mm)



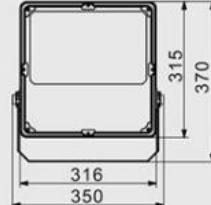
50W



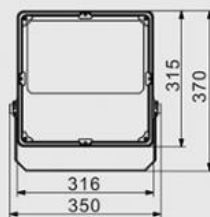
100W



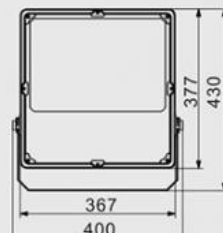
150W



200W



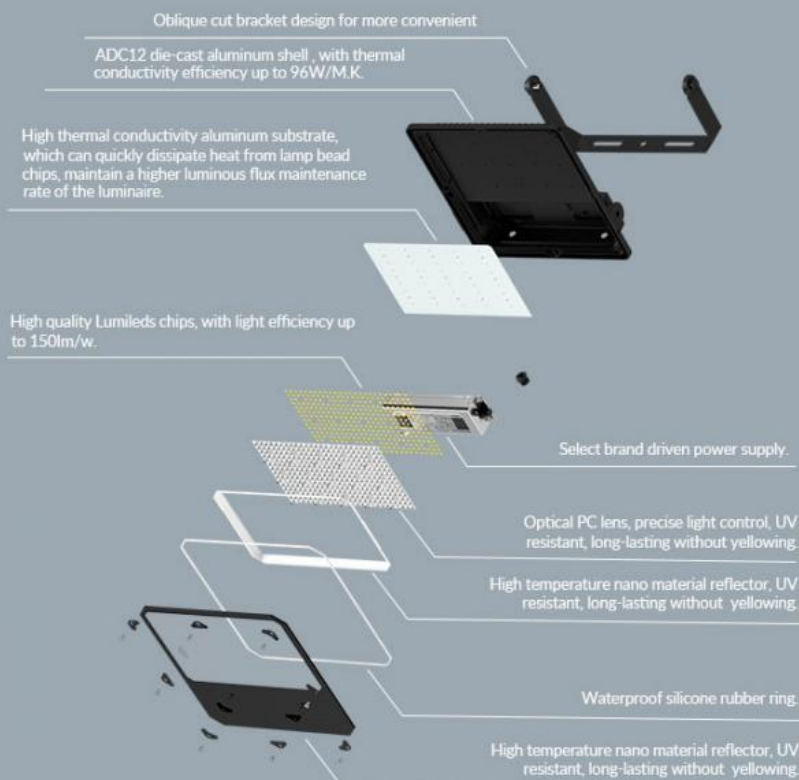
240W



300W



Structural exploded view:



Six Reasons To Choose Us

#

:



IP66
Water Proof



Energy
Saving



Thickened
Tempered Glass



Corrosion And
Rust-resistant



Adjustable
Stand



Durable



Applications



OUR FACTORY

COMPANY POWER & UNIQUE STRENGTHS

Plant area of 2600 m²

2000 pieces per day

Source Factory

Support customization

Quality service



PRODUCTION SITE



FAQ

Q1. Are you a manufacturer?

Yes, we have our factory with over 10 years of R&D and manufacturing experience based on ISO quality management since 2011.

Q2. Do you have any MOQ limit for LED light orders?

No MOQ, 1pc for sample checking is available.

Q3. Can I get a lower price for a large quantity of orders?

Yes, please check with our sales staff for the details.

Q4. How about the lead time of ordering?

Our standard sample lead time is 3-5 days, and normal order lead time is 7-10 days. For the large order lead time, please also check with our sales team.

Q5. Can you provide OEM and ODM services?

We can provide OEM and ODM products, with customized label designs on the product and carton box. Or customized carton box, and laser print logo on the lamp fixture.

Q6. What is the payment terms of your formal order?

We accept payment via TT, Paypal, and Western Union, and we offer EXW, FOB, CIF, and CFR terms.

Q7. How to deal with the defective?

All of our products are produced in a strict quality control system, the defective rate is less than 0.2% according to our shipment records. We offer a 3- 5 years warranty for this product, if there is any defective during the warranty, please provide pictures or videos of the working situation of the defective lights, and we will ship the new lights to you within a few days or send it together with your next order.

 **Shenzhen Yongxinrui Lighting Technology Co., Ltd.**



+8613410523891



joy@ushineray.com



ushineraylight.com

4F, Building C, Junxing Optoelectronic Industrial Park, Fuyuan 2nd Road, FuHai Street, Bao'an District,
Shenzhen