

High Lumen Industrial LED High Bay Lights 100W High Bay Light Fixtures 5000k

Our Product Introduction

for more products please visit us on ushineraylight.com

Basic Information

- Place of Origin: Guangdong, China
- Brand Name: UShineray
- Certification: CE
- Model Number: YXR-UFO-100W-B
- Minimum Order Quantity: 1pcs
- Payment Terms: T/T, Paypal, Western Union



Product Specification

- Power: 100W
- Lumen: 13000±5%lm 15000±5%lm 18000±5%lm
- Lighting Solutions Service: Lighting And Circuitry Design, DIALux Evo Layout
- Working Lifetime(Hour): 50000
- Lamp Body Material: Aluminum
- Application: Warehouse Lighting
- Light Source: San'an 2835 Or Lumileds 2835
- Warranty(Year): 5-Year
- Beam Angle: 60°/90°/120°
- Protection: OTP, OCP, OVP, SCP
- Highlight: 100w high bay light fixtures, industrial led high bay lights 100w, high bay light fixtures 5000k



More Images



Product Description

High Lumen 100W LED High Bay Lights 5000K for Maintenance Workshops

The 100W LED high bay lights deliver high lumen output with a 5000K color temperature, perfect for maintenance workshops. Designed to provide bright, clear illumination, these lights enhance visibility and detail in workspaces. Their high lumen efficiency ensures that every corner of your workshop is well-lit, improving work conditions and efficiency.

Product Features

High bright led lights source San'an or Lumileds SMD 2835small light decay.

Whole lamp light efficiency 160~180lm/W+5%.

Adopt high quality UV material PC lens, high temperature resistance, no yellowing.

60°/90°/120° beam angles, meets different lighting applications.

Integrated die-casting aluminum which come with stiff resistance, corrosion resistance,special painting, no fear of harsh environment.

Fin design aluminum heat-sink, excellent heat-dissipation performance, longer life span.

Functions: ZigBee PWM 0/1~10V Micro-wave available.



Product Parameters

Model	YXR-UFO-100W-B
Rated Power	100W
Other Power Options	150W 200W
Lumen	13000±5%lm 15000±5%lm 18000±5%lm
Size(mm)	Ø248*155mm
Net Weight	1.8kg
Light Efficacy	130lm/W ±5% 150lm/W ±5% 180lm/W ±5%
Beam Angle	60°/90°/120°
LED	San'an 2835 or Lumileds 2835
Color Temperature	2800K-6500K
CCT adjustable	Available (Toggle switch)
Power adjustable	Available (Toggle switch)
Input Voltage	AC100-277V 50/60Hz (Moso)
Protection	OTP, OCP, OVP, SCP

Surge Protection	6KV
Thermal Conductivity	96 W/m·K
CRI	≥70Ra
SDCM	<6
PF	>0.97
THD	<15%
Work Temperature	-30~60°C
LED Junction Temperature	≤80°C
Humidity	15%~90% RH, no condensing
IP Grade	IP65
IK Grade	IK08
Certificates	CE RoHS
Warranty	5 Years
Life Span	≥50000H
Body Material	PC lens + Aluminum housing
Electronic Safety Grade	Class I

Product Details

High Brightness SMD 2835 LED Chip



Light efficiency up to 180lm /W Anti-glare Long life



High brightness



High energy saving



High color rendering



Excellent Heat Dissipation Performance

Hollow air convection heat dissipation design increase more airflow for better heat dissipation.



Good Performance Driver

Both isolated and non-isolated drivers are available,
IP65 ingress protection, high PF and good stability, flicker free,



IP65 Ingress
Protection



High PF and good
stability flicker free



High efficiency



IP65 Ingress Protection

Waterproof, dust-proof and explosion-proof, it can stand up to the bad elements, durable.



IP65
Rate



long
lasting



Beam Angles

PC Optical Lens

High light transmittance, impact resistance, reduce glare while optimizing lighting performance, with 60° 90° 120° beam angles to meet professional light distribution.

60° 90° circle lens



60°



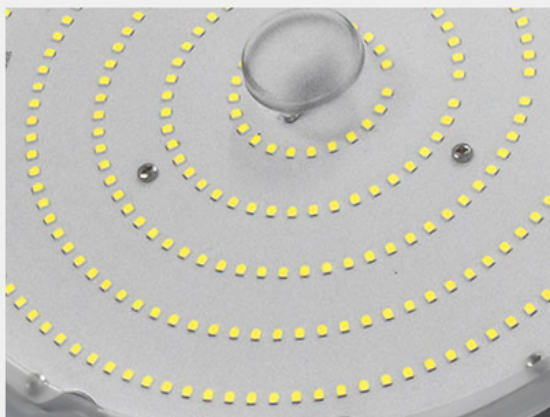
90°



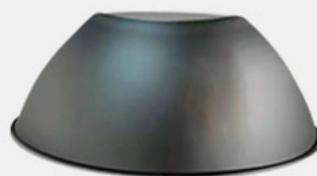
120° plane lens



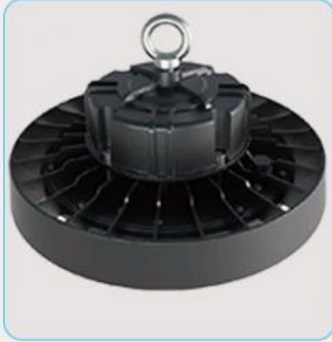
120°



Aluminum reflector cover



Two Installations

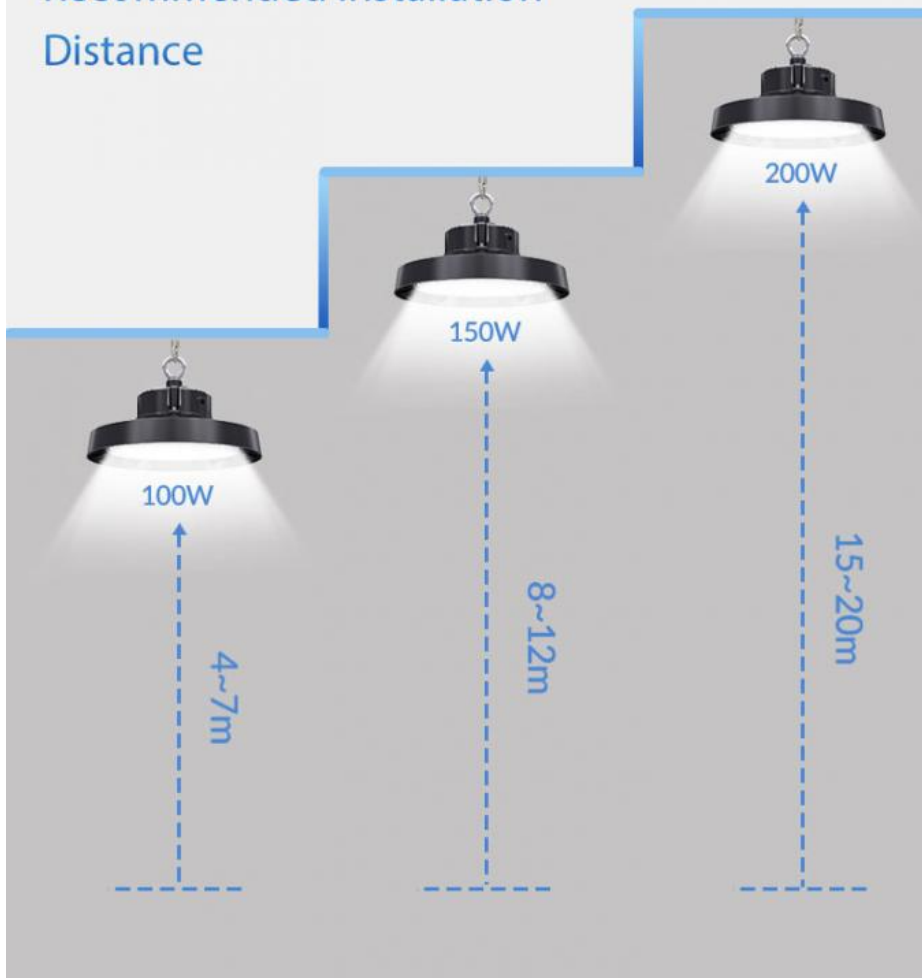


Ring installation



U hanging installation

Recommended Installation Distance



PRODUCTION SITE



FAQ

Q1. Are you a manufacturer?

Yes, we have our factory with over 10 years of R&D and manufacturing experience based on ISO quality management since 2011.

Q2. Do you have any MOQ limit for LED light orders?

No MOQ, 1pc for sample checking is available.

Q3. Can I get a lower price for a large quantity of orders?

Yes, please check with our sales staff for the details.

Q4. How about the lead time of ordering?

Our standard sample lead time is 3-5 days, and normal order lead time is 7-10 days. For the large order lead time, please also check with our sales team.

Q5. Can you provide OEM and ODM services?

We can provide OEM and ODM products, with customized label designs on the product and carton box. Or customized carton box, and laser print logo on the lamp fixture.

Q6. What is the payment terms of your formal order?

We accept payment via TT, Paypal, and Western Union, and we offer EXW, FOB, CIF, and CFR terms.

Q7. How to deal with the defective?

All of our products are produced in a strict quality control system, the defective rate is less than 0.2% according to our shipment records. We offer a 3- 5 years warranty for this product, if there is any defective during the warranty, please provide pictures or videos of the working situation of the defective lights, and we will ship the new lights to you within a few days or send it together with your next order.

USHINERAY Shenzhen Yongxinrui Lighting Technology Co., Ltd.

+8613410523891

joy@ushineray.com

ushineraylight.com

4F, Building C, Junxing Optoelectronic Industrial Park, Fuyuan 2nd Road, FuHai Street, Bao'an District, Shenzhen