

Super Bright High Bay 150w 2835 Led Light Fixtures For Parking Garages

Our Product Introduction

for more products please visit us on ushineraylight.com

Basic Information

- Place of Origin: Guangdong, China
- Brand Name: UShineray
- Certification: CE
- Model Number: YXR-UFO-150W-B
- Minimum Order Quantity: 1pcs
- Payment Terms: T/T, Paypal, Western Union



Product Specification

- Power: 150W
- Lumen: 19500±5%lm 22500±5%lm 27000±5%lm
- Lighting Solutions Service: Lighting And Circuitry Design, DIALux Evo Layout
- Working Lifetime(Hour): 50000
- Lamp Body Material: Aluminum
- Application: Packing Garages Lighting
- Light Source: San'an 2835 Or Lumileds 2835
- Warranty(Year): 5-Year
- Beam Angle: 60°/90°/120°
- Protection: OTP, OCP, OVP, SCP
- Highlight: high bay 150w 2835, 2835 led light fixtures, super bright high bay 150w



More Images



Product Description

Super Bright 150W High Bay LED Light Fixtures for Parking Garages

The 150W high bay LED light fixtures are engineered for superior brightness, perfect for illuminating parking garages. These lights provide intense and uniform illumination, improving safety and visibility in parking areas. Their high brightness ensures that all corners of the garage are well-lit, reducing shadows and enhancing security for both vehicles and pedestrians.

Product Features

High-Performance LED Source: Equipped with San'an or Lumileds SMD 2835 LEDs for minimal light decay and high brightness.

Efficient Light Output: Offers a light efficiency range of 160-180lm/W $\pm 5\%$.

Durable PC Lens: Uses high-quality UV-resistant PC lens that resists high temperatures and prevents yellowing.

Versatile Beam Angles: Available in 60°, 90°, and 120° beam angles to suit various lighting needs.

Robust Aluminum Construction: Integrated die-casting aluminum with high stiffness, corrosion resistance, and special coating for durability in harsh environments.

Superior Heat Dissipation: Features a fin design aluminum heat sink for excellent thermal management and extended lifespan.

Advanced Functions: Supports ZigBee, PWM, 0/1-10V, and microwave control options for enhanced functionality.



Product Parameters

Model	YXR-UFO-150W-B
Rated Power	150W
Other Power Options	100W 200W
Lumen	19500 $\pm 5\%$ lm 22500 $\pm 5\%$ lm 27000 $\pm 5\%$ lm
Size(mm)	Ø308*165mm
Net Weight	2.2kg
Light Efficacy	130lm/W $\pm 5\%$ 150lm/W $\pm 5\%$ 180lm/W $\pm 5\%$
Beam Angle	60°/90°/120°
LED	San'an 2835 or Lumileds 2835
Color Temperature	2800K-6500K
CCT adjustable	Available (Toggle switch)
Power adjustable	Available (Toggle switch)
Input Voltage	AC100-277V 50/60Hz (Moso)

Protection	OTP, OCP, OVP, SCP
Surge Protection	6KV
Thermal Conductivity	96 W/m·K
CRI	≥70Ra
SDCM	<6
PF	>0.97
THD	<15%
Work Temperature	-30~60°C
LED Junction Temperature	≤80°C
Humidity	15%~90% RH, no condensing
IP Grade	IP65
IK Grade	IK08
Certificates	CE RoHS
Warranty	5 Years
Life Span	≥50000H
Body Material	PC lens + Aluminum housing
Electronic Safety Grade	Class I
Wire	Rubber cable(3*0.75mm²) L=0.3m

Product Details

High Brightness SMD 2835 LED Chip



Light efficiency up to 180lm /W Anti-glare Long life



High brightness



High energy saving



High color rendering



Excellent Heat Dissipation Performance

Hollow air convection heat dissipation design increase more airflow for better heat dissipation.



Good Performance Driver

Both isolated and non-isolated drivers are available,
IP65 ingress protection, high PF and good stability, flicker free,



IP65 Ingress
Protection



High PF and good
stability flicker free



High efficiency



IP65 Ingress Protection

Waterproof, dust-proof and explosion-proof, it can stand up to the bad elements, durable.



IP65
Rate



long
lasting



Beam Angles

PC Optical Lens

High light transmittance, impact resistance, reduce glare while optimizing lighting performance, with 60° 90° 120° beam angles to meet professional light distribution.

60° 90° circle lens



60°



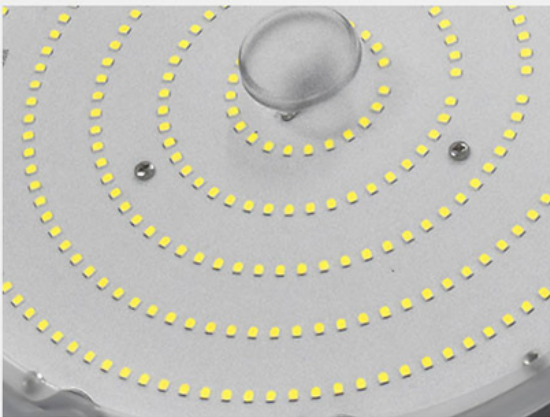
90°



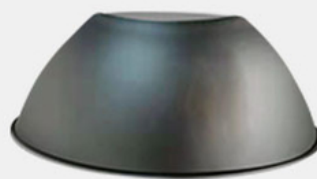
120° plane lens



120°



Aluminum reflector cover



Two Installations

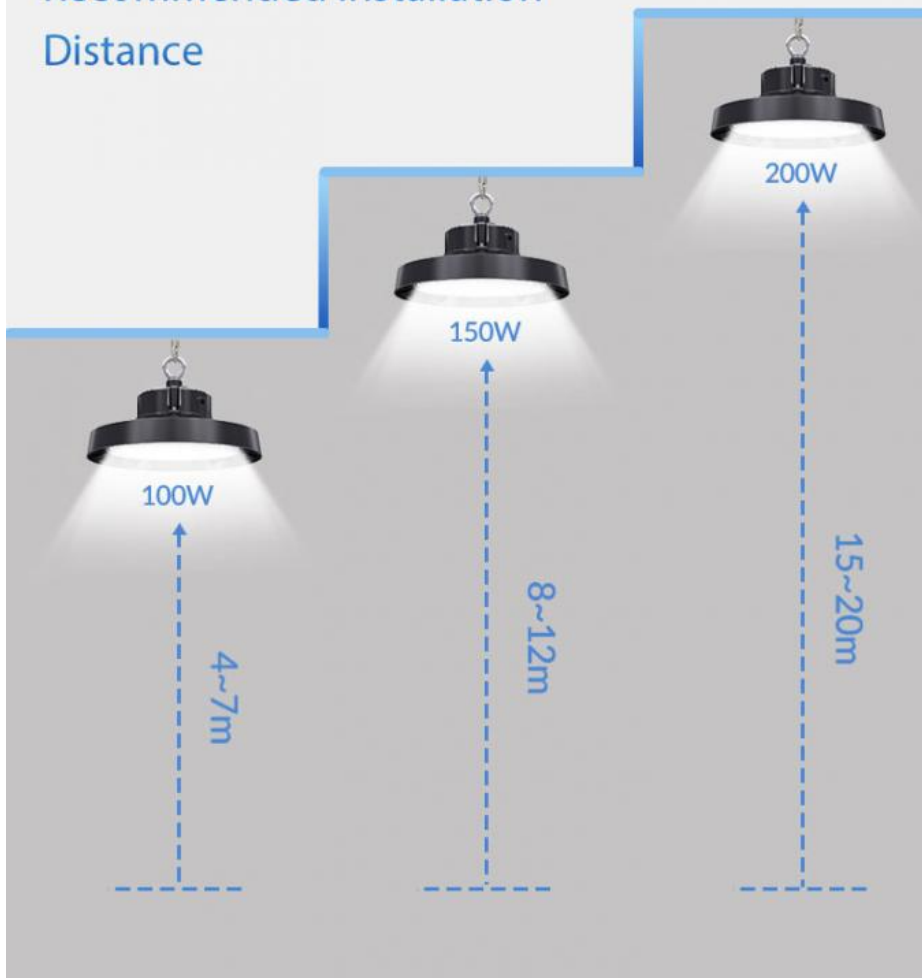


Ring installation



U hanging installation

Recommended Installation Distance



PRODUCTION SITE



USHINERAY Shenzhen Yongxinrui Lighting Technology Co., Ltd.

+8613410523891

joy@ushineray.com

ushineraylight.com

4F, Building C, Junxing Optoelectronic Industrial Park, Fuyuan 2nd Road, FuHai Street, Bao'an District, Shenzhen