



Power Adjustable Led Highbay Light 200Watt Dimmable High Bay Lights For Industrial Plant

Our Product Introduction

for more products please visit us on ushineraylight.com

Basic Information

- Place of Origin: Guangdong, China
- Brand Name: UShineray
- Certification: CE ROHS FCC
- Model Number: YXR-UFO-200W-B
- Minimum Order Quantity: 1pc
- Payment Terms: T/T, Paypal, Western Union



Product Specification

- Power: 150W
- Lumen: 26000±5%lm 30000±5%lm 36000±5%lm
- Lighting Solutions Service: Lighting And Circuitry Design, DIALux Evo Layout
- Working Lifetime(Hour): 50000
- Dimmable: Yes
- CCT Adjustable: Yes
- Light Source: San'an 2835 Or Lumileds 2835
- Warranty(Year): 5-Year
- Beam Angle: 60°/90°/120°
- Application: Packing Garages Lighting
- Highlight: **adjustable led highbay light, led highbay light 200watt, 200watt dimmable high bay lights**



More Images



Product Description

Power Adjustable 200W LED High Bay Light for Industrial Plant

Our 200W LED high bay light features adjustable power settings, making it a versatile choice for industrial plants. With customizable brightness levels, this light allows for precise control over illumination based on the specific needs of your industrial environment. Its robust design ensures reliable performance and efficient lighting, contributing to a safer and more productive work area.

Product Features

Bright LED Technology: Utilizes San'an or Lumileds SMD 2835 LEDs, ensuring low light decay and high brightness.

High Light Efficiency: Delivers between 160 and 180lm/W $\pm 5\%$ for effective illumination.

UV-Resistant PC Lens: Constructed with a UV-stable PC lens to withstand high temperatures and prevent discoloration.

Multiple Beam Angles: Offers 60°, 90°, and 120° beam angles for versatile lighting applications.

Durable Aluminum Design: Features integrated die-casting aluminum with resistance to stiffness, corrosion, and environmental damage.

Efficient Heat Management: Designed with a fin-style aluminum heat sink for superior heat dissipation and prolonged lifespan.

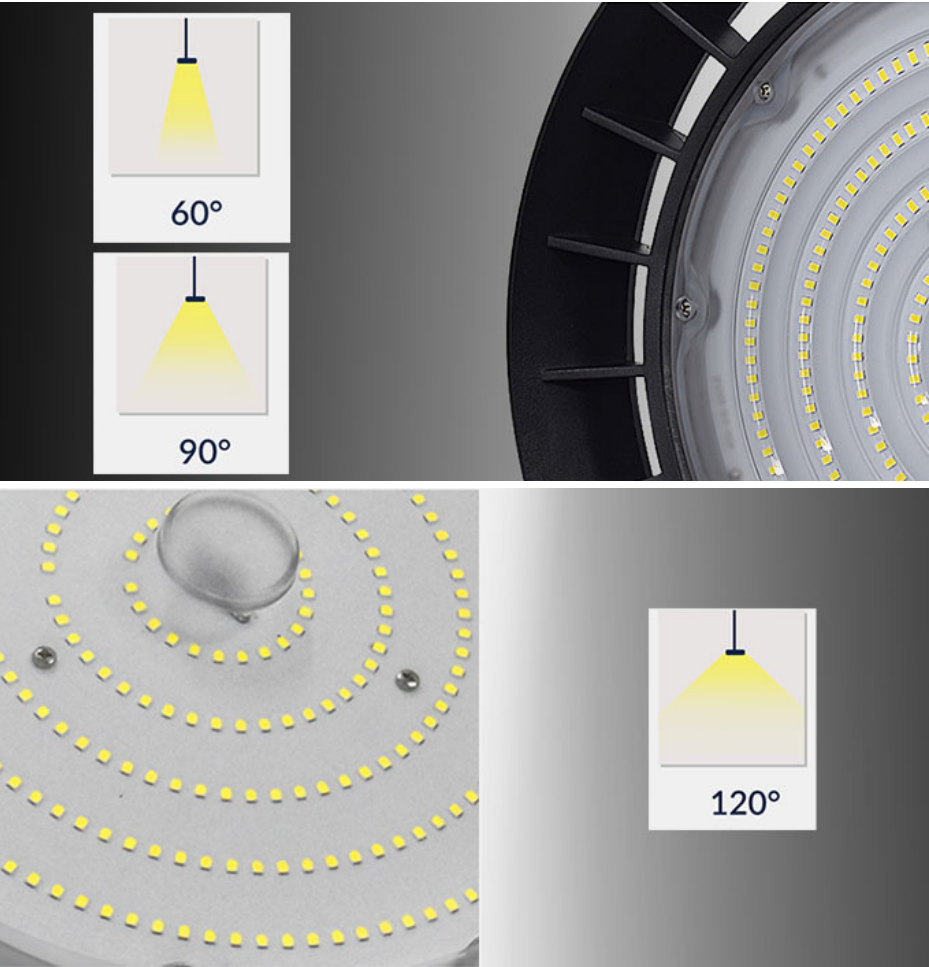
Flexible Control Options: Includes support for ZigBee, PWM, 0/1-10V, and microwave controls for adaptable lighting solutions.

Product Parameters

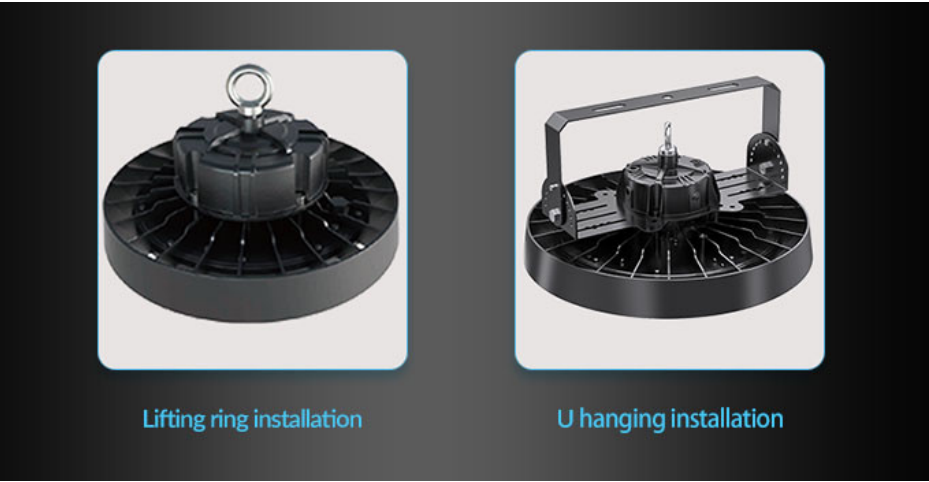
Model	YXR-UFO-200W-B
Rated Power	200W
Other Power Options	100W 150W
Lumen	26000 $\pm 5\%$ lm 30000 $\pm 5\%$ lm 36000 $\pm 5\%$ lm
Size(mm)	Ø360*175mm
Net Weight	3.1kg
Light Efficacy	130lm/W $\pm 5\%$ 150lm/W $\pm 5\%$ 180lm/W $\pm 5\%$
Beam Angle	60°/90°/120°
LED	San'an 2835 or Lumileds 2835
Color Temperature	2800K-6500K
CCT adjustable	Available (Toggle switch)
Power adjustable	Available (Toggle switch)
Input Voltage	AC100-277V 50/60Hz (Moso)
Protection	OTP, OCP, OVP, SCP
Surge Protection	6KV
Thermal Conductivity	96 W/m-K
CRI	≥ 70 Ra
SDCM	<6
PF	>0.97
THD	<15%
Work Temperature	-30~60°C
LED Junction Temperature	$\leq 80^\circ\text{C}$
Humidity	15%~90% RH, no condensing
IP Grade	IP65
IK Grade	IK08
Certificates	CE RoHS
Warranty	5 Years

Life Span	≥50000H
Body Material	PC lens + Aluminum housing
Electronic Safety Grade	Class I
Wire	Rubber cable(3*0.75mm²) L=0.3m

Product Details



PC Optical Lens
High light transmittance, impact resistance, reduced glare while optimizing lighting performance, with 60° 90°120°beam angles to meet professional light distribution.



Two installation brackets can be selected
Ring installation U hanging installation.



Excellent Heat Dissipation Performance
Hollow air convection heat dissipation design increase more airflow for better heat dissipation.

IP65 Ingress Protection

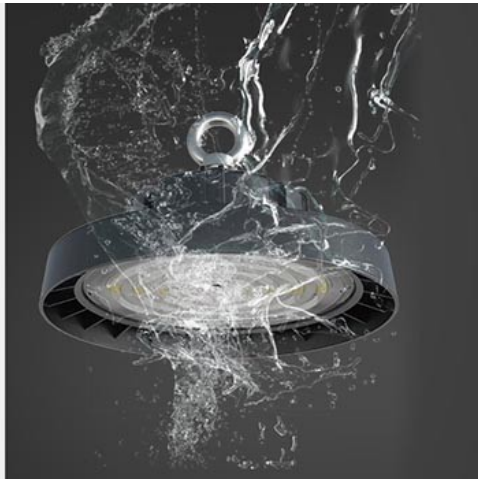
Waterproof, dust-proof and explosion-proof, it can stand up to the bad elements, durable.



IP65
Rate



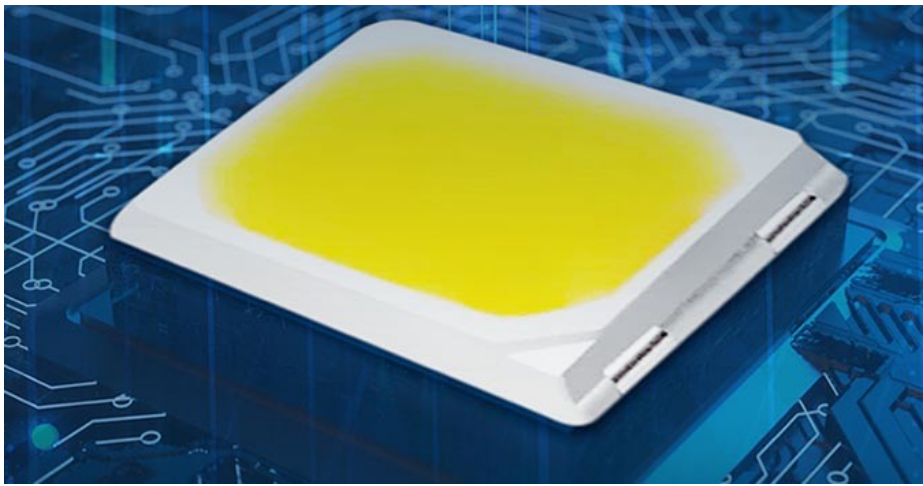
long
lasting



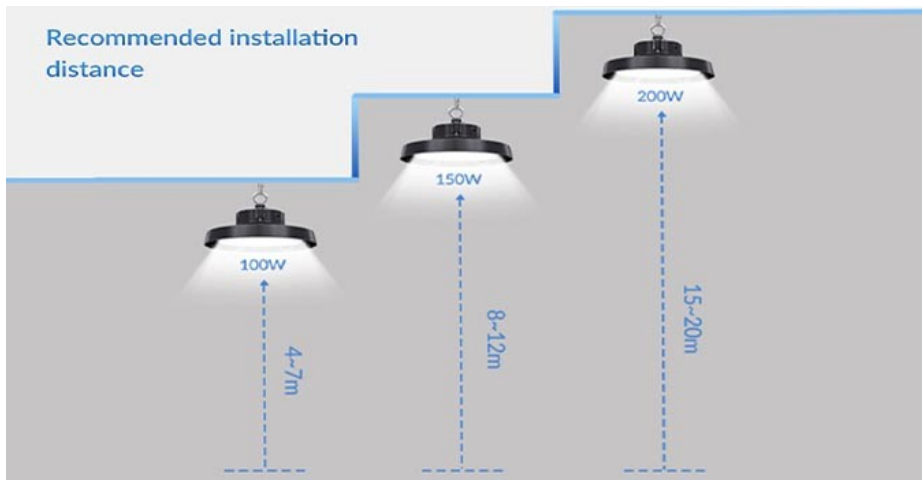
IP65 Ingress Protection
Waterproof, dust-proof and explosion-proof, it can stand up to the bad elements durable.



High-performance Moso Driver
Over-voltage, over-current, over-temperature short circuit protection, flicker-free.



High Brightness SMD 2835 LED Chip
Light efficiency up to 180lm/W 5% Anti-glare Long life.



Applications

Installation scene display



Airport terminal



Stadium

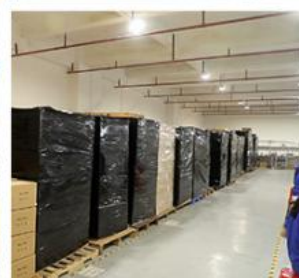


shopping mall

PRODUCTION SITE



MANUFACTURING
CAPACITY



FAQ

Q1. Are you a manufacturer?

Yes, we have our factory with over 10 years of R&D and manufacturing experience based on ISO quality management since 2011.

Q2. Do you have any MOQ limit for LED light orders?

No MOQ, 1pc for sample checking is available.

Q3. Can I get a lower price for a large quantity of orders?

Yes, please check with our sales staff for the details.

Q4. How about the lead time of ordering?

Our standard sample lead time is 3-5 days, and normal order lead time is 7-10 days. For the large order lead time, please also check with our sales team.

Q5. Can you provide OEM and ODM services?

We can provide OEM and ODM products, with customized label designs on the product and carton box. Or customized carton box, and laser print logo on the lamp fixture.

Q6. What is the payment terms of your formal order?

We accept payment via TT, Paypal, and Western Union, and we offer EXW, FOB, CIF, and CFR terms.

Q7. How to deal with the defective?

All of our products are produced in a strict quality control system, the defective rate is less than 0.2% according to our shipment records. We offer a 3- 5 years warranty for this product, if there is any defective during the warranty, please provide pictures or videos of the working situation of the defective lights, and we will ship the new lights to you within a few days or send it together with your next order.

 **Shenzhen Yongxinrui Lighting Technology Co., Ltd.**



+8613410523891



joy@ushineray.com



ushineraylight.com

4F, Building C, Junxing Optoelectronic Industrial Park, Fuyuan 2nd Road, FuHai Street, Bao'an District,
Shenzhen