

UV Resistant 400W Flood Light On Stand Led Outdoor Floodlight For Building Construction Site

Basic Information

- Place of Origin: Shenzhen,Guangdong,China
- Brand Name: UShineray
- Certification: CE, RoHS
- Model Number: YXR-FL-400W-H
- Minimum Order Quantity: 1pcs
- Packaging Details: 1 pcs in Inner box
- Payment Terms: T/T, Paypal, Western Union
- Supply Ability: 3000 Piece/Pieces per Week

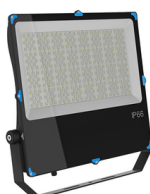


Product Specification

- | | |
|-----------------------------------|---|
| ● Power: | 400W |
| ● Lamp Luminous Efficiency(lm/w): | 56000lm |
| ● Item Type: | Flood Lights |
| ● Input Voltage(v): | AC100-240V |
| ● Warranty: | 5 Years |
| ● Waterproof: | IP66 |
| ● Application: | Building Construction Site |
| ● Cri (ra>): | 70 |
| ● Highlight: | Outdoor Floodlight, 400W Flood Light On Stand , Building Construction Site Flood Light |



More Images



Product Description

UV Resistant 400W Flood Light on Stand LED Outdoor Floodlight for Building Construction Site

Our UV-resistant 400W flood light is perfect for building construction sites. This LED outdoor floodlight delivers powerful illumination with excellent energy efficiency, ensuring optimal visibility for construction activities. The UV-resistant coating protects the floodlight from harsh sunlight, prolonging its lifespan. The portable stand design allows for easy positioning and mobility, making it an ideal lighting solution for dynamic and challenging construction environments.

Product Features

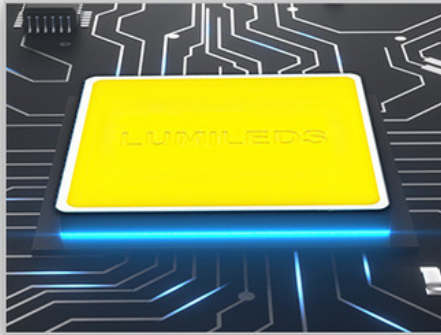
Power range spans from 50W to 400W.
Provides 140lm/W light efficacy.
Beam angles: 30°, 60°, 90°, 120°.
Lamp adjusts 180°.
IP66 ingress protection.
Equipped with a laser sight for precision.
Option to add an anti-glare cover.
Supports IES files and Dialux for lighting design.

Product Parameter

Model	YXR-FL-400W-H
Wattage	400W
Other Power Options	30W 50W 100W 150W 200W 250W 300W
Lumen	56000±5%lm
Size(mm)	524*545*65
Net Weight	10.2kg
Light Efficacy	140lm/W ±5%
Beam Angle	30°/60°/90°/120°
LED	Lumileds 2835
Color Temperature	3000K-6500K
Input Voltage	AC100-277V(MOSO)
CRI	≥70Ra
PF	>0.97
THD	15%<THD<20%
Work Temperature	-30~60°C
Humidity	15%~90% RH, no condensing
IK Grade	IK08
IP Grade	IP66
Warranty	5 Years
Life Span	≥50000H
Finish	Sprayed with outdoor special powder
Body Material	PC lens + Aluminum housing
Electronic Safety Grade	Class I
Wire	Rubber cable(3*1mm²) L=0.3m

Product Details

Product Features



DETAIL 01

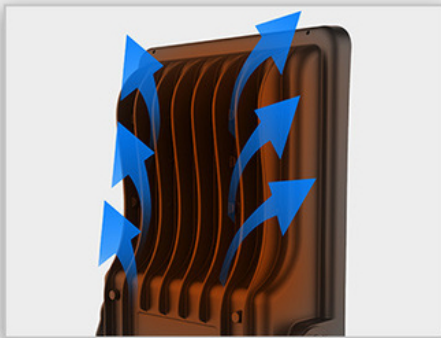


Adopt international famous brand LED chips with high luminous efficiency 140 lm/W high CRI, ultra-low luminous decay <10% in 5 years.

DETAIL 02



Various beam angle, accurate light distribution: 30°/60°/90°/120°, suitable for different places.



DETAIL 03

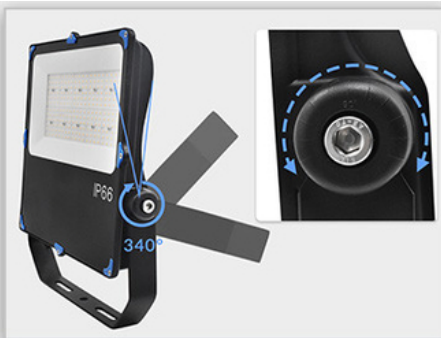


Integrated die-casting, thickened heat dissipation ribs, quickly and evenly dissipate the heat generated by the light source, prolonging the service life.

DETAIL 04



Glass front buckle design, IP66 waterproof, novel and beautiful, buckles are available in blue and black.



DETAIL 05



Thickened U-shaped bracket, the gear buckle angle can be adjusted according to the needs, and the fastening does not slip.

DETAIL 06

High tempered glass, provides double protection and good self-clean, besides, the light transmittance is 95%.



DETAIL 07

Ingress Protection: IP66 waterproof, dustproof; Impact resistance IK08; no fear of the harsh environment.

FAQ

Q1. Are you a manufacturer?

Yes, we have our factory with over 10 years of R&D and manufacturing experience based on ISO quality management since 2011.

Q2. Do you have any MOQ limit for LED light orders?

No MOQ, 1pc for sample checking is available.

Q3. Can I get a lower price for a large quantity of orders?

Yes, please check with our sales staff for the details.

Q4. How about the lead time of ordering?

Our standard sample lead time is 3-5 days, and normal order lead time is 7-10 days. For the large order lead time, please also check with our sales team.

Q5. Can you provide OEM and ODM services?

We can provide OEM and ODM products, with customized label designs on the product and carton box. Or customized carton box, and laser print logo on the lamp fixture.

Q6. What is the payment terms of your formal order?

We accept payment via TT, Paypal, and Western Union, and we offer EXW, FOB, CIF, and CFR terms.

Q7. How to deal with the defective?

All of our products are produced in a strict quality control system, the defective rate is less than 0.2% according to our shipment records. We offer a 3- 5 years warranty for this product, if there is any defective during the warranty, please provide pictures or videos of the working situation of the defective lights, and we will ship the new lights to you within a few days or send it together with your next order.

USHINERAY Shenzhen Yongxinrui Lighting Technology Co., Ltd.

+8613410523891

joy@ushineray.com

ushineraylight.com

4F, Building C, Junxing Optoelectronic Industrial Park, Fuyuan 2nd Road, FuHai Street, Bao'an District, Shenzhen