

## Telescopic LED Balloon Light Tower 1400W Mobile Light Tower Lamp For Construction Sites

Our Product Introduction

for more products please visit us on [ushineraylight.com](http://ushineraylight.com)

### Basic Information

- Place of Origin: Guangdong, China
- Brand Name: USHineray
- Certification: CE ROHS FCC ETL KC
- Model Number: YXR-BL-1400W-A
- Minimum Order Quantity: 1pcs
- Payment Terms: T/T, Paypal, Western Union



### Product Specification

- Beam Angle(°): 360° Omni Illumination
- Lumen: 224000lm
- Dimmable: 4-Level Dimming
- Product Name: 1400W Balloon Light Tower
- Application: Construction Lighting, Road Construction And Maintenance
- Power: 1400W
- Tripod Max Height: 3.8m, 4.6m Or Customized
- Material: Aluminum + S.steel + PC + Fabric
- Control: Switch On-off, Knob Switch For Dimming, Remote Control
- Balloon Diffuser: Yellow/Blue/Black Top-Reflective Diffuser Or All White
- Balloon Size: D1100\*H860 Or Customized
- Input Voltage: AC90-305V
- Highlight: telescopic led balloon light tower,



### More Images



## Product Description

### Telescopic Mobile Light Tower 1400W LED Balloon Lamp for Construction Sites

The Telescopic Mobile Light Tower, equipped with a 1400W LED Balloon Lamp, offers adjustable height and powerful illumination for construction sites. This light tower provides flexibility in lighting large areas, ensuring that all aspects of your construction project are well-lit for efficient work.

### Product Features

**Mosquito, dust, and debris filter:** Ensures optimal performance and longevity.

**360° coverage:** Provides all-around illumination for broad areas.

**Soft, diffused lighting:** Non-glare; Lightweight and portable.

**Energy-efficient:**  $\geq 160\text{lm/W}$  with minimal power consumption.

**Dimmable feature:** Adjustable brightness via knob adjuster or remote control; On-off switch included.

**Easy setup:** Foldable tripod and cover for quick assembly.

**Weather-resistant design:** Waterproof, UV resistant, and fire retardant with a lifespan exceeding 50,000 hours.

### Product Parameter

Item No.	YXR-BL-1400W-A
Power	1400W
Input Voltage	AC90-305V
Lumen(lm)	224000
Weight(kg)	26.5
Inflated Dimension	D1100*H860
Light Efficacy	160 $\pm$ 5% lm/W
CCT	5000K or 3000K
CRI	$\geq 70\text{Ra}$
LED Chips	Lumileds 2835
LED Driver	Inventronics
PF	$\geq 0.95$
Dimming Control Mode	Knob switch or Remote control
Remote Control Distance	60m
Life Span	$\geq 50000$ hrs
IP Grade	IP65
Cable Length(m)	10
Tripod Height(min-max)	1.62~3.8m
Tripod Collapsed Height	1.8m
Tripod Footprints	1.4m
Tripod Weight	11.5kg

### Product Details

# Portable Inflatable LED Balloon Light

150W-1400W

High Efficiency  
 $\geq 160\text{lm/W}$



Wide area coverage with 360° illumination



NO Stroboscopic



Easy Setup



Dimmable



Rapid Heat-Dissipation



No Glare



Vehicle



360° Illumination



Diffused Light





## INDUSTRY-LEADING QUALITY AND PATENTED DESIGN



Aluminum Construction with powder-coated panels on all components.



Modular Panels with waterproof lenses for enhanced protection.



Built-in Stainless Steel Cage protective cover.



Superior IP65 water and dust resistance, UV resistance, and flame retardant for industrial use.



Velcro Straps for easy removal of balloon diffuser for cleaning and replacement.

## 1000W Illumination



Lumen up to **160000**lm  
Illumination range up to 6400 m<sup>2</sup>



Equipped with a brightness adjustment knob



Polar Diagram  
(Light on tripod  
at **4.8m**)

## Filtration device

Prevents mosquitoes, insects, dust, and other debris from entering the lamp to ensure optimal performance and a longer lifespan.





## Self-Inflating Balloon

Made of tear-resistant ripstop fabric, offers 360-degree free lighting and inflates with one switch.



Balloon material: waterproof, sandproof, translucent, UV resistant, flame retardant.



SELF-INFLATING



Waterproof



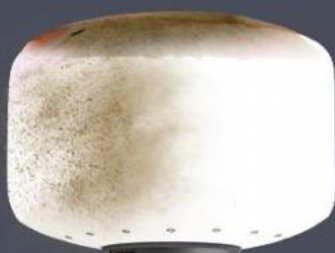
Dustproof



Anti-UV

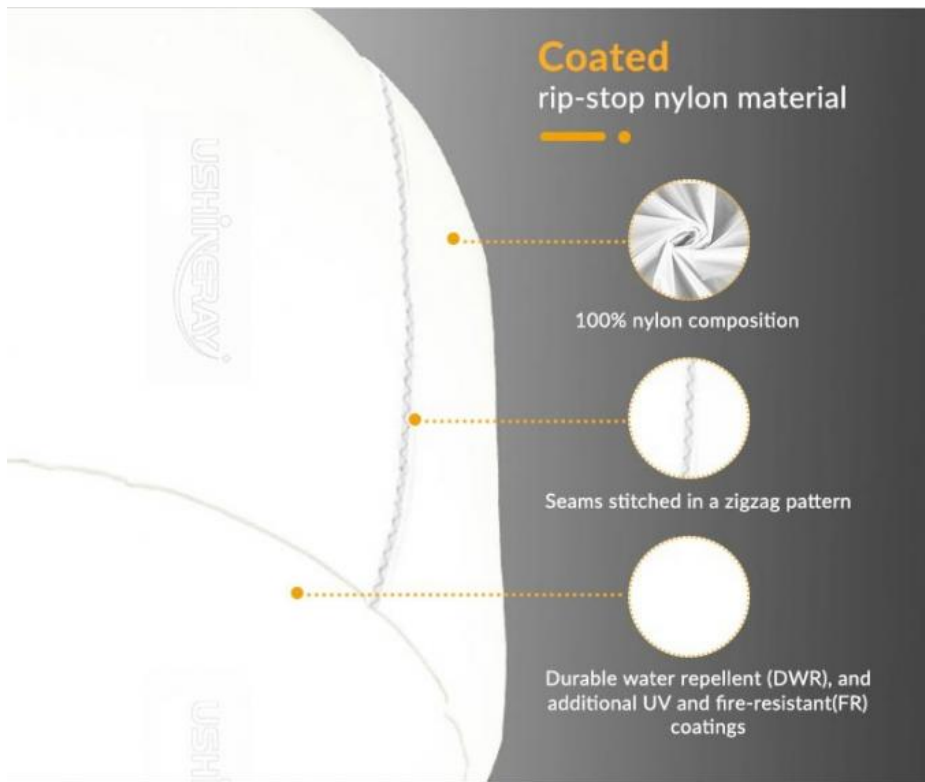


Flame retardant



IP65









**No.1**

**Brand Philips High Brightness LED Chips**

low decay, longer span life.



**No.2**

**World famous brand Inventronics or Moso LED driver**

Good stability, high efficiency, flicker free, anti-surge.



**No.3**

**Ventilation holes**

Facilitate efficient heat dissipation, preventing overheating, extend the lifespan, enhance performance, ensure safety.

### Applications

Widely used in Film Shooting, Road Construction and Maintenance, Camping, Parties and Special Events, Forensic Lighting, Construction, Search and Rescue, Landscaping, Emergency Repairs, Fire & Rescue, Temporary Lighting, Outdoor Activities, Disaster Relief, Farming and Agriculture, Flagger Stations, Law Enforcement Support, Mining.



## FAQ

### Q1. Are you a manufacturer?

Yes, we have our factory with over 10 years of R&D and manufacturing experience based on ISO quality management since 2011.

### Q2. Do you have any MOQ limit for LED light orders?

No MOQ, 1pc for sample checking is available.

### Q3. Can I get a lower price for a large quantity of orders?

Yes, please check with our sales staff for the details.

### Q4. How about the lead time of ordering?

Our standard sample lead time is 3-5 days, and normal order lead time is 7-10 days. For the large order lead time, please also check with our sales team.

**Q5. Can you provide OEM and ODM services?**

We can provide OEM and ODM products, with customized label designs on the product and carton box. Or customized carton box, and laser print logo on the lamp fixture.

**Q6. What is the payment terms of your formal order?**

We accept payment via TT, Paypal, and Western Union, and we offer EXW, FOB, CIF, and CFR terms.

**Q7. How to deal with the defective?**

All of our products are produced in a strict quality control system, the defective rate is less than 0.2% according to our shipment records. We offer a 3- 5 years warranty for this product, if there is any defective during the warranty, please provide pictures or videos of the working situation of the defective lights, and we will ship the new lights to you within a few days or send it together with your next order.

 **Shenzhen Yongxinrui Lighting Technology Co., Ltd.**



+8613410523891



joy@ushineray.com



ushineraylight.com

4F, Building C, Junxing Optoelectronic Industrial Park, Fuyuan 2nd Road, FuHai Street, Bao'an District,  
Shenzhen